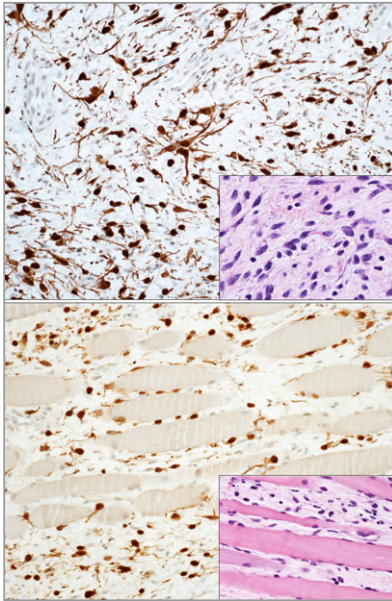


Image Gallery: Brain? no, melanoma

DOI: 10.1111/bjd.14531

DEAR EDITOR, Desmoplastic melanoma is an aggressive, deeply invasive variant of melanoma.



Although the diagnosis is usually suspected in routine sections, immunohistochemical stains are mandatory to rule out other spindle cell malignancies.

In this case of desmoplastic melanoma on the face of a 74-year-old man, the immunohistochemical stain with S100 highlights the extraordinarily well-formed dendritic morphology of the neoplastic melanocytes, closely resembling nervous tissue (upper panel). Melanocytic dendrites are long, interlacing and gently wrapped around myocytes of the deep skeletal muscle layer (lower panel). Despite the well differentiated histological features, the neoplasm is locally very aggressive.

The magnification of all the figures is $\times 200$.

¹Pathology Unit, Arcispedale Santa Maria Nuova-IRCCS, Reggio Emilia, Italy

²Dermatology and Skin Cancer Unit, Arcispedale Santa Maria Nuova-IRCCS, Reggio Emilia, Italy

E-mail: simonetta.piana@asmn.re.it

S. PIANA¹

E. MOSCARELLA²

C. LONGO²

Funding sources: none.

Conflicts of interest: none declared.