

An integrated study of the biodiversity within the *Pseudechiniscus suillus–facettalis* group (Heterotardigrada: Echiniscidae)

MICHELE CESARI¹, MARTINA MONTANARI¹, REINHARDT M. KRISTENSEN², ROBERTO BERTOLANI^{3,4}, ROBERTO GUIDETTI^{1,*} and LORENA REBECCHI¹

¹Department of Life Sciences, University of Modena and Reggio Emilia, Italy

²The Natural History Museum of Denmark, University of Copenhagen, Denmark

³Department of Education and Humanities, University of Modena and Reggio Emilia, Italy

⁴Civic Museum of Natural History, Verona, Italy

Received 31 October 2018; revised 23 April 2019; accepted for publication 9 May 2019

Pseudechiniscus is the second most species-rich genus in Heterotardigrada and in the family Echiniscidae. However, previous studies have pointed out polyphyly and heterogeneity in this taxon. The recent erection of the genus *Acanthechiniscus* was another step in making *Pseudechiniscus* monophyletic, but species identification is still problematic. The present investigation aims at clarifying biodiversity and taxonomy of *Pseudechiniscus* taxa, with a special focus on species pertaining to the so-called ‘*suillus–facettalis* group’, by using an integrated approach of morphological and molecular investigations. The analysis of sequences from specimens sampled in Europe and Asia confirms the monophyly of the genus *Pseudechiniscus*. Inside the genus, two main evolutionary lineages are recognizable: the *P. novaezeelandiae* lineage and the *P. suillus–facettalis* group lineage. Inside the *P. suillus–facettalis* group, COI molecular data points out a very high variability between sampled localities, but in some cases also among specimens sampled in the same locality (up to 33.3% p-distance). The integrated approach to the study of *Pseudechiniscus* allows confirmation of its monophyly and highlights the relationships in the taxon, pointing to its global distribution.

KEYWORDS: 18S – 28S – cytochrome *c* oxidase I – *Pseudechiniscus facettalis* – scanning electron microscope – *Pseudechiniscus suillus* – Tardigrada – water bears.

INTRODUCTION

The phylum Tardigrada consists of more than 1200 described species (Guidetti & Bertolani, 2005; Degma & Guidetti, 2007; Degma *et al.*, 2018), subdivided into three classes: Eutardigrada, Mesotardigrada and Heterotardigrada (Ramazzotti & Maucci, 1983). The latter class is mainly made up of semi-terrestrial or marine species, and it is subdivided into two orders: Arthrotardigrada and Echiniscoidea (Marcus, 1929). Inside Echiniscoidea, the second most species-rich genus is *Pseudechiniscus* Thulin, 1911, surpassed only by the genus *Echiniscus* C. A. S. Schultze, 1840 (Degma *et al.*, 2018; Gąsiorek *et al.*, 2018c). However,

Pseudechiniscus has always been controversial. For example, Maucci (1973–74) and Dastych (1984) suggested a complete revision of the genus. It was finally emended by Kristensen (1987), but two main groups inside the genus were still distinguished: the *P. suillus/conifer* group, characterized by the absence of trunk cirri; and the *P. victor* group, identifiable with the presence of trunk cirri. Moreover, the advent of molecular investigations quickly pointed to polyphyly in *Pseudechiniscus* (Jørgensen *et al.*, 2011; Guil & Giribet, 2012; Guil *et al.*, 2013). A recent integrative analysis (Vecchi *et al.*, 2016) has led to the erection of the genus *Acanthechiniscus*, more or less corresponding to the old *P. victor* group, another step in making *Pseudechiniscus* monophyletic, with the genus now comprising 40 described species (Degma *et al.*, 2018).

*Corresponding author. E-mail: roberto.guidetti@unimore.it

The high number of described species notwithstanding, species identification is still difficult in *Pseudechiniscus* (Kathman & Dastych, 1990; Fontoura & Morais, 2011). Some of the species are difficult to distinguish from one another, which is due to different issues, such as older, imprecise or incomplete diagnoses (for actual standards) with omissions of important characters, probably linked to the use of poor equipment and, in some cases, the type material being absent or lost (Fontoura & Morais, 2011). Moreover, some characters are subject to different interpretations, e.g. faceted cephalic and terminal plates, fine or coarse dorsal granulation and small cones on lateral positions. In addition, there is still some confusion between *P. suillus* (Ehrenberg, 1853), the type species, and *P. facettalis* Petersen, 1951, especially concerning the subdivision of the pseudosegmental plate and the faceting on the terminal plate, a highly variable character (Kathman & Dastych, 1990; Fontoura & Morais, 2011). Interestingly, even in the original description, Petersen (1951) described *P. facettalis* as a form of *P. suillus*, stating ‘the differences are not so great that it can be apprehended as an independent species’.

The present investigation aims at studying the diversity and taxonomy of *Pseudechiniscus* taxa, using an integrated approach of morphological (light and scanning electron microscopy) and molecular (18S, 28S and COI genes) investigations in order to elucidate relationships in the genus *Pseudechiniscus*, with a special focus on species pertaining to the *P. suillus*–*facettalis* group.

MATERIAL AND METHODS

Mosses were sampled in five different localities in Eurasia (Table 1). After soaking a fragment of the moss for half an hour, tardigrades were extracted from samples by repeatedly washing and squeezing

the fragment through consecutive 500- μ m and 38- μ m sieves. Tardigrades pertaining to the genus *Pseudechiniscus* were individually isolated using a needle and a glass pipette under a stereomicroscope. The remaining fractions of the samples are stored at -80°C in the Biobank of the Evozoo Lab at the Department of Life Sciences (University of Modena and Reggio Emilia, Italy – UNIMORE).

Tardigrades (53 specimens) were mounted in Faure–Berlese mounting medium for observations under light microscopy (LM), while the other 28 animals were prepared for scanning electron microscopy (SEM), following the protocol described in Bertolani *et al.* (2011b). Observations with LM were carried out with both phase contrast (PhC) and differential interference contrast (DIC) up to the maximum magnification (objective 100 \times with oil immersion) with a Leica DM RB microscope, equipped with a digital camera Nikon DS-Fi 1, at UNIMORE. Observations with SEM were carried out with a Nova Nano SEM 450 (FEI Company – Oxford Instruments), available at the ‘Centro Interdipartimentale Grandi Strumenti’ at UNIMORE. All slides are deposited in Bertolani’s collection at the Department of Life Sciences, UNIMORE. Unfortunately, for all studied populations, morphometric data according to Fontoura & Morais (2011) were impossible to collect, because most specimens on slides were in an unsuitable position for the measurement of the scapular plate. The latter was almost never in only one focal plane, preventing its measurement. Moreover, in the few slides in which the scapular plate was completely visible in only one focal plane, the specimens were so flattened that the edge of all the other dorsal plates were not identifiable and, therefore, impossible to measure.

A total of 27 specimens were utilized for molecular analyses (Table 1; Supporting Information, Table S1). Before total DNA isolation, single *Pseudechiniscus* specimens were temporally mounted in water on a slide, and observed and identified at LM up to 100 \times

Table 1. Geographical information of sampled localities and number of *Pseudechiniscus* specimens used for molecular analyses

Sample	Locality	Sampling Year	Latitude; Longitude	Elevation (m a.s.l.)	18S	28S	COI
C2592	Orkhon Valley - Mongolia	2004	046° 47.311' N; 101° 57.848' E	1790	6	6	6
C2595	Khangai Nuruu National Park - Mongolia	2004	046° 38.288' N; 101° 17.089' E	2792	4	4	2
C3019	Velkyvodaped - Slovakia	2009	048° 56.311' N; 020° 21.260' E	624	4	4	4
C3039, C3040	Carvalho da Moita do Conqueiro - Portugal	2007, 2006	040° 23.833' N; 007° 38.067' W	1134	5	5	3
C3842	Avise - Italy	2014	045° 42.883' N; 007° 07.350' E	1145	6	6	2
Total number of specimens					25	25	17

magnification, following the protocol described in [Cesari *et al.* \(2011\)](#). Voucher images of taxonomically relevant structures (i.e. cuticle, papillae, spines, buccal-pharyngeal apparatus and claws) were recorded for each specimen and are available upon request. Genomic DNA was extracted from single tardigrades using the MasterPure Complete DNA and RNA Purification kit (Epicentre – Illumina, Madison, WI, USA), following the manufacturer's protocol. A region of the nuclear ribosomal small subunit gene (18S) was amplified with the primers and protocols described in [Vicente *et al.* \(2013\)](#), whereas a region of the nuclear ribosomal large subunit gene (28S) was amplified with the primers and protocols as described in [Guidetti *et al.* \(2014\)](#). A portion of the mtDNA cytochrome *c* oxidase I gene (COI) was carried out using primers LCO (5'-GGT CAA CAA ATC ATA AAG ATA TTG G-3') and HCOout (5'-CCA GGT AAA ATT AAA ATA TAA ACT TC-3'), with the following protocol: initial denaturation at 94 °C for 5 min, followed by five cycles of 94 °C for 1 min, 45 °C for 1 min 30 s and 72 °C for 1 min 30 s, succeeded by 35 cycles of 94 °C for 30 s, 50 °C for 30 s and 72 °C for 1 min, with a final extension step of 72 °C for 6 min. The amplified products were gel purified using the Wizard Gel and PCR cleaning (Promega) kit, while sequencing reactions were performed using the ABIPRISM BigDye Terminator v.1.1 Sequencing Kit (Applied Biosystems, Foster City, CA, USA) on purified amplicons. Each sequencing reaction contained 0.2 µM of a single PCR primer to initiate the sequencing reaction, 2 µL of BigDye, 70 ng of purified products, 4 µL of 5x BigDye Terminator v.1.1 Sequencing Buffer (Applied Biosystems, Foster City, CA, USA) and twice distilled H₂O for a final volume of 20 µL. Cycling conditions for sequencing reactions consisted of 25 cycles of 96 °C for 10 s, 50 °C for 5 s and 60 °C for 4 min. Both strands were sequenced using an ABI Prism 3100 (Applied Biosystems, Foster City, CA, USA). Nucleotide sequences of the newly analysed specimens were submitted to GenBank (accession numbers: MK804894–MK804955; see [Supporting Information, Table S1](#)).

For 18S and 28S gene analysis, nucleotide sequences were aligned with the MAFFT algorithm ([Kato *et al.*, 2002](#)), as implemented in the MAFFT online service ([Kato *et al.*, 2017](#)) and checked by visual inspection. Sequences pertaining to a *Florarctus* sp. (Heterotardigrada, Arthrotardigrada; GenBank acc. nos.: GQ849017 for the 18S gene, GQ849034 for the 28S gene; [Jørgensen *et al.*, 2010](#)) specimen were used as outgroup. Other Echiniscoidea sequences from GenBank were also included in the analysis for appropriate comparisons ([Supporting Information, Table S2](#)). A Bayesian inference dendrogram was computed with the program MrBayes v.3.2.6 ([Huelsenbeck & Ronquist, 2001](#); [Ronquist &](#)

[Huelsenbeck, 2003](#)) as implemented in CIPRES v.2.0 ([Miller *et al.*, 2010](#)). Best-fitting model evaluations were performed taking into account the Corrected Akaike Information Criterion (jModelTest v.2.1.10; [Guindon & Gascuel, 2003](#); [Darriba *et al.*, 2012](#)), which identified the TPM1+I+G model for the 18S gene and the GTR+G model for the 28S gene as the most suitable. The TPM1+I+G model was replaced by the GTR+I+G model in the MrBayes' analysis. Two independent runs, each of four Metropolis-coupled Markov chains Monte Carlo method, were launched for 30 × 10⁶ generations and trees were sampled every 1000 generations. Convergence of runs was assessed by tracking average standard deviation of split frequencies between runs and by plotting the log likelihood of sampled trees in TRACER v.1.5 ([Rambaut & Drummond, 2007](#)) and the first 3 × 10⁶ sampled generations were discarded as burn-in. A maximum likelihood (ML) analysis was performed with the program RAxML v.7.2.4 ([Stamatakis, 2006](#)), as implemented in CIPRES, using the models described above. Bootstrap resampling with 1000 replicates was undertaken via the rapid bootstrap procedure of [Stamatakis *et al.* \(2008\)](#) to assign support to branches in the ML tree.

For COI gene analysis, chromatograms obtained were checked for the presence of ambiguous bases. Sequences were translated into amino acids by using the invertebrate mitochondrial code implemented in MEGA7 ([Kumar *et al.*, 2016](#)) in order to check for the presence of stop codons and, therefore, of pseudogenes. Nucleotide sequences were aligned with the MAFFT algorithm, as described above, and checked by visual inspection. For appropriate molecular comparisons, COI sequences from GenBank pertaining to other Echiniscoidea specimens ([Supporting Information, Table S2](#)) were considered in the analysis. Pairwise nucleotide sequence divergences between scored haplotypes were computed using p-distance with MEGA7. The relationships among COI haplotypes were estimated using a parsimony network by applying the method described by [Templeton *et al.* \(1992\)](#), as implemented in TCS v.1.21 ([Clement *et al.*, 2000](#)) and visualized using tcsBU ([Santos *et al.*, 2015](#)). A 95% connection limit was used as a useful general tool in species assignments and discovery ([Hart & Sunday, 2007](#)). Putative species were also inferred by using the Poisson Tree Process (PTP; [Zhang *et al.*, 2013](#)) and the Automatic Barcode Gap Discovery method (ABGD; [Puillandre *et al.*, 2012](#)). PTP is a coalescent-based species delimitation method that use non-ultrameric gene trees as input, and utilizes heuristic algorithms to identify speciation events relative to numbers of substitutions. The PTP method produces robust diversity estimates, in some cases more robust than those estimated under the generalized mixed Yule coalescent model ([Tang *et al.*, 2014](#)). The starting

gene tree was a ML tree computed using RAxML under the GTR+G model with the same procedure as described above for the 18S gene. In the distance-based ABGD method, the sequences are sorted into hypothetical species based on the barcode gap (i.e. whenever the divergence among organisms belonging to the same species is smaller than divergence among organisms from different species). The method first detects the barcode gap as the first significant gap beyond a model-based one-sided confidence limit for intraspecific divergence, and then uses it to partition the data. ABGD settings for the COI dataset were: prior minimum divergence of intraspecific diversity (P_{\min}) = 0.001; prior maximum divergence of intraspecific diversity (P_{\max}) = 0.1; Steps = 10 and gap width = 1.5. The analysis was performed on the ABGD website (<http://wwwabi.snv.jussieu.fr/public/abgd/abgdweb.html>).

RESULTS

The morphological analyses with LM and SEM of all investigated *Pseudechiniscus* specimens evidence the presence of pedal (leg) plates, the absence of the spine on the first leg pair and a dome-like cephalic papilla (Figs 1A, B, 2A, B, 3A, B, 4A, B). The latter character points to their belonging to the '*suillus-facettalis*' species group (Petersen, 1951). Although the cephalic and caudal plates' faceting should allow a clear attribution of the specimens to either the *P. suillus* (no plate faceting) or to the *P. facettalis* (plate faceting present; Ramazzotti & Maucci, 1983; Gąsiorek & Degma, 2018), this character is not clear and does not help in unambiguously identifying specimens (Figs 1C, D, 2C, D, 3C, D, 4C, D). All sampled localities feature male and female specimens. The female gonopore is made up of six cuticular folds that appear as a rose-like structure (Fig. 1E, F), while the male gonopore is round (Fig. 3E, F). These data point to the bisexual condition of analysed specimens.

The specimens pertaining to the Slovak sample (C3019; Fig. 1) have a peculiar ventral sculpture with respect to all other analysed specimens. The sculpture is made up of the heads of the intracuticular pillars that appear as dotted areas forming a reticulate pattern (Fig. 1E, F). This peculiar reticulation is very similar to that of *Pseudechiniscus xiai* Wang *et al.*, 2018. The only differences found between these species are the division of median plate 2 in the Slovak sample (undivided in *P. xiai*) and the not uniform terminal plate in the Slovakian specimens, which presents notches, as depicted in fig. 10, p. 45 of Petersen (1951). In *P. xiai*, the terminal plate is without notches, nor faceted.

All other analysed specimens (Figs 2–4) present no evident differences in the cuticle ventral sculpture, which is made up of the heads of the intracuticular pillars forming a fine uniform granulation that becomes coarser between the legs and in correspondence of the gonopore (Figs 2E, F, 3E, F, 4E, F).

The phylogenetic inference based on 1652 bp of the 18S + 28S genes (Fig. 5) shows *Echiniscoides* branching of the base with respect to a group with all other Echiniscoidea taxa. Inside the latter cluster, the *Parechiniscus* genus is sister to five main lineages: the *Hypechiniscus* + *Testechiniscus* + *Diploechiniscus* + *Echiniscus* cluster, three different lineages representing the genera *Mopsechiniscus*, *Oreella* and *Bryodelphax*, respectively, and a large group containing four other genera. Inside this latter cluster, two main lineages can be observed: one groups *Proechiniscus*, *Cornechiniscus* and *Acanthechiniscus*, while the other clusters all *Pseudechiniscus* specimens. The *Pseudechiniscus* lineage is subdivided into two highly supported clusters: one groups a sequence from GenBank misidentified as *Echiniscus* sp. with *Pseudechiniscus titianae* Vecchi *et al.*, 2016 (characterized by an elongated cephalic papilla, typical of the *Pseudechiniscus novaezaelandiae* group), while all sequences grouped inside the second cluster belong to specimens with a dome-like cephalic papilla, which characterizes the species pertaining to the *P. suillus-facettalis* group. This second cluster is divided into two main groups: (1) one sequence from a Mongolian specimen belonging to the first cluster, together with *P. facettalis* specimens from Greenland and (2) all other sequences obtained from newly analysed specimens belonging to a highly supported group comprising also Norwegian and Spanish sequences from GenBank, with the sequences from Slovakian specimens sister to all. No clear-cut division between *P. suillus* and *P. facettalis* is found; both species are comprised in the latter cluster.

The analyses of 675 bp of the COI gene of the *Pseudechiniscus* specimens show a high variability. Ten new haplotypes are found among 15 specimens. The genetic p-distances between scored haplotypes (Supporting Information, Table S3) are in the range of 0.2–33.3%. Inside each sampled location, p-distances are generally low (Portugal: 0.0–1.7%; Slovakia: 0.0–0.2%; Italy: 0%), with the exception of both Mongolian samples, where a very high variability (up to 33.3% p-distance) is found among specimens. The PTP analysis (Fig. 6) shows nine putative species clusters: one each for Portuguese (together with Spanish *P. facettalis* specimens from GenBank), Italian, Slovakian and Greenlandic specimens. On the other hand, the Mongolian specimens are subdivided into five different putative species. This subdivision

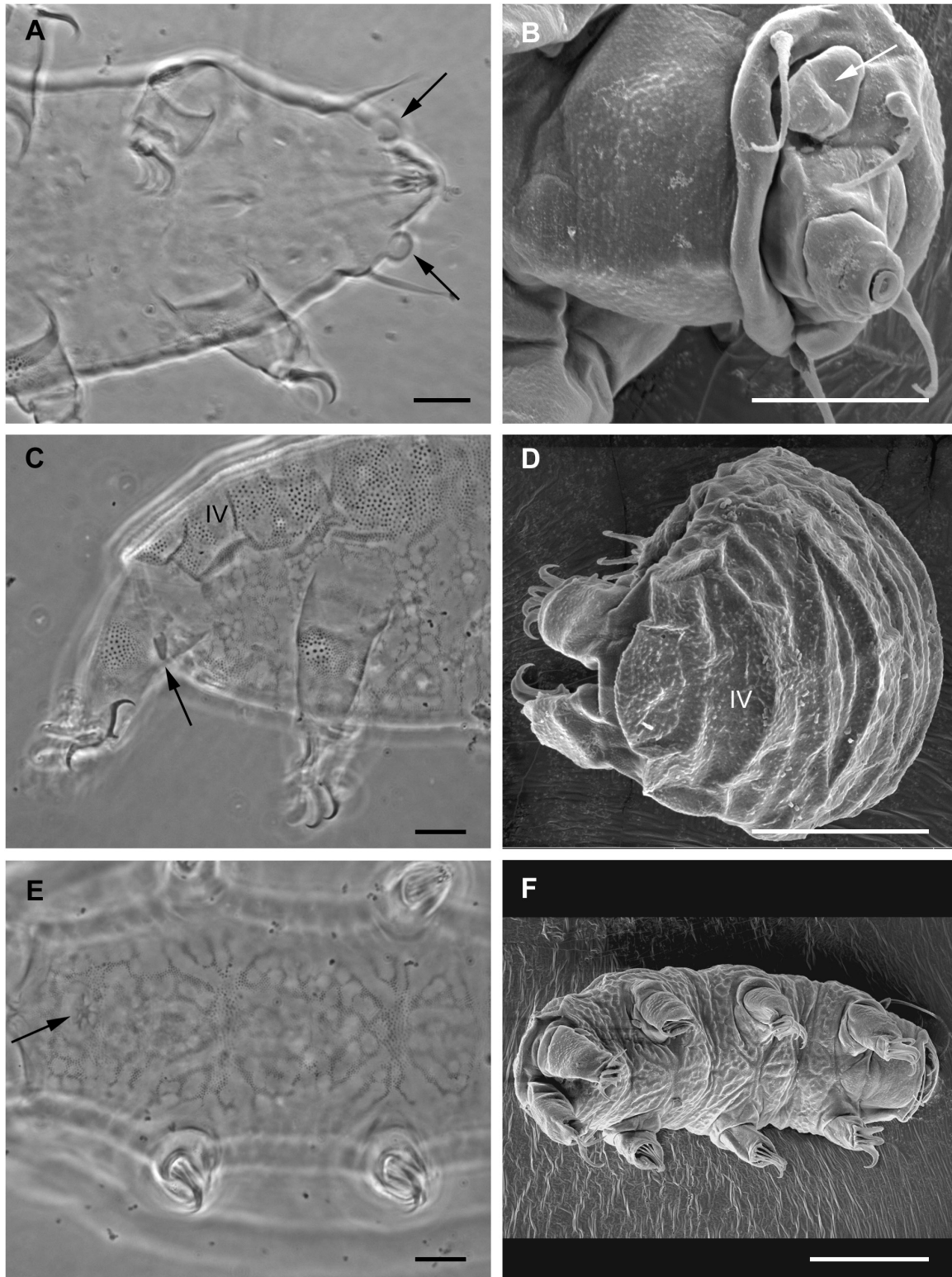
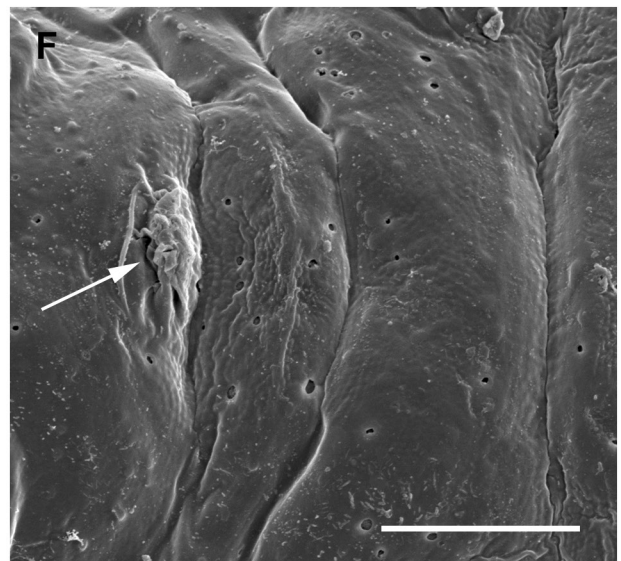
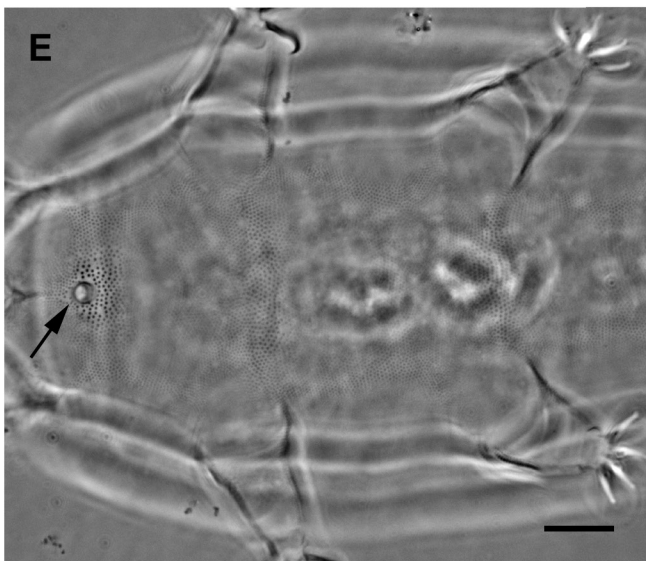
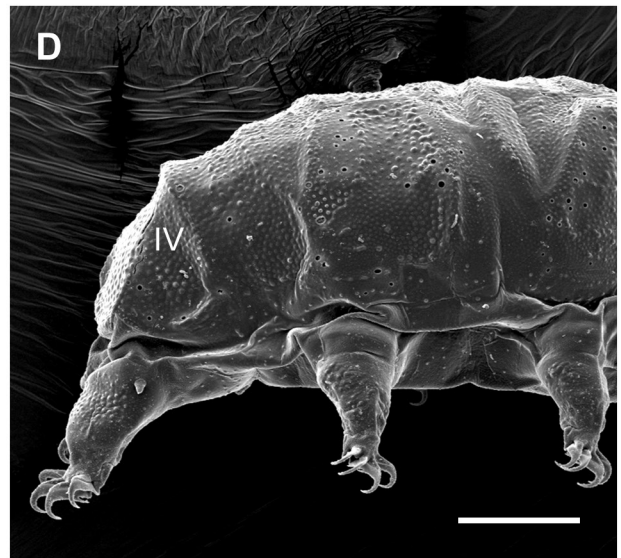
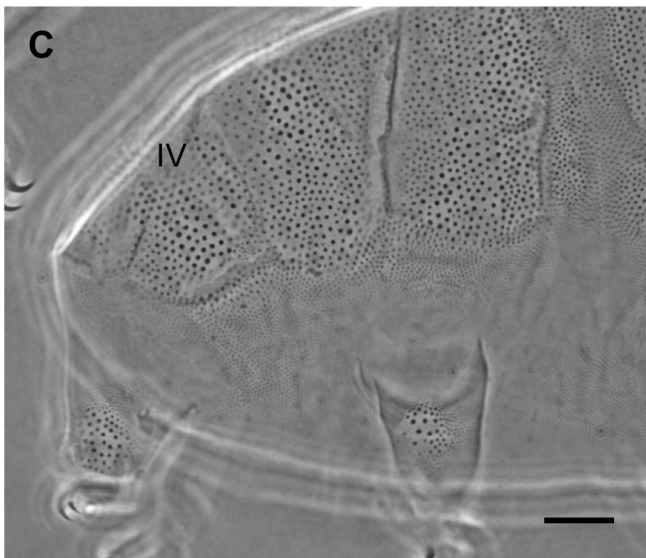
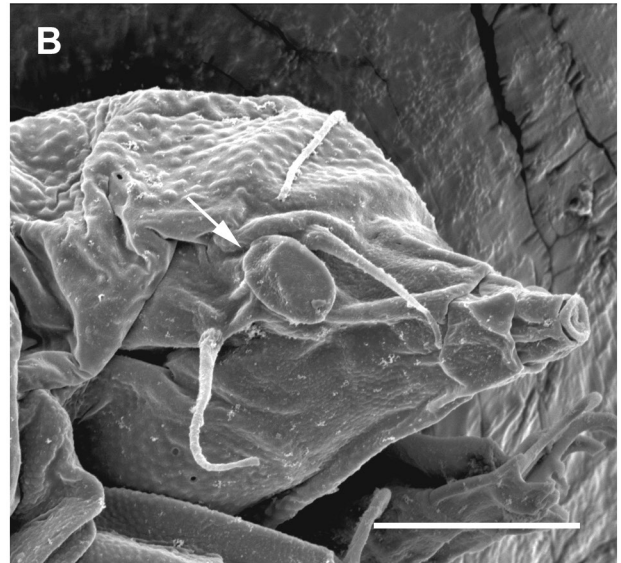
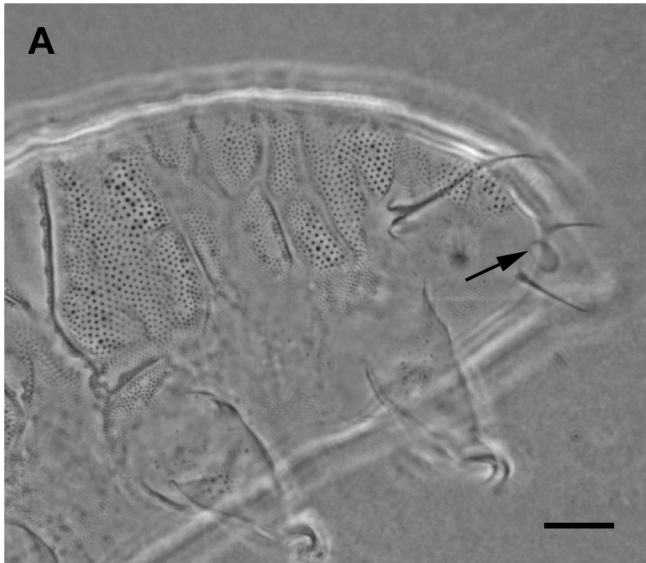


Figure 1. *Pseudechiniscus* specimens from Slovakia (C3019), light microscopy (LM, phase contrast) and scanning electron microscopy (SEM). A, cephalic papillae (arrows, LM). B, head with cephalic papilla (arrow, SEM). C, terminal (caudal) plate (IV) and papilla (arrow) on the fourth pair of legs (LM). D, terminal (caudal) plate (IV; SEM). E, ventral sculpture and female gonopore (arrow; LM). F, *in toto* animal with evident ventral sculpture (SEM). Pores in D are artefacts due to sample preparation. Scale bars: 10 µm (A, B, C, E); 20 µm (D); 30 µm (F).



is confirmed by both the ABGD and the haplotype network analysis (Fig. 6).

DISCUSSION

The integrated approach to the study of *Pseudechiniscus* allows us to confirm and clarify its taxonomic position. Our new data confirm the subdivision between *Acanthechiniscus* and *Pseudechiniscus* identified by Vecchi *et al.* (2016) and also points out that all specimens sampled in European, Asian, Arctic and Antarctic regions belong to *Pseudechiniscus*. This highlights the global distribution of *Pseudechiniscus*, differing from what was recently discovered for another echiniscid genus (i.e. *Testechiniscus*; Gąsiorek *et al.*, 2018a). While all *Pseudechiniscus* specimens clustered together in a well-supported group, their relationships with other members of the recently erected subfamily Pseudechiniscinae (Guil *et al.*, 2019) appear less evident. In fact, our analysis finds good support for the *Pseudechiniscus* + *Proechiniscus* + *Cornechiniscus* + *Acanthechiniscus* lineage, but it does exclude all *Mopsechiniscus* specimens from this evolutionary lineage, also negating the tentative including of this genus inside the Pseudechiniscini tribe (Guil *et al.*, 2019). Therefore, more in-depth analyses will be needed in order to confirm or disprove this new Echiniscidae systematics.

Two species-groups were identified inside *Pseudechiniscus*, recognizable by both morphological and molecular approaches, i.e. the *P. novaezealandiae* group (characterized by an elongated cephalic papilla) and *P. suillus*–*facettalis* group (characterized a dome-like cephalic papilla; Fig. 5). This datum is also confirmed by a morphological phylogenetic analysis by Gąsiorek *et al.* (2018c), in which *P. novaezealandiae* and *P. suillus* are two clearly separated lineages. These species groups could be described as new subgenera, but we think that more integrative data are necessary in order to erect new taxa, especially for the *P. novaezealandiae* group.

However, no clear-cut subdivision could be found between *P. suillus* and *P. facettalis* specimens. Even though some previous authors (Ramazzotti & Maucci, 1983; Gąsiorek & Degma, 2018) used the presence of faceting in the terminal plate to discriminate between these two species, this character was not detectable and, therefore, it was not possible to unambiguously

identify specimens. Considering that also Dastych (1988) synonymized *P. suillus* and *P. facettalis*, the taxonomic status of these two species is not well defined and needs revision.

The integrative analysis allows us a clear-cut identification of the specimens from Slovakia. They all have a peculiar ventral sculpture, characterized by a reticulated pattern (Fig. 1E, F), similar to that exhibited by *P. xiai*, sampled in the Liupan Mountains (Central China; Wang *et al.*, 2018). The molecular results of Slovakian specimens clearly point to a well-defined taxon (Fig. 6) but, unfortunately, no molecular data are presently available for the type population of *P. xiai*. Given the large geographical distance and the small morphological differences between Slovakian and Chinese specimens (divided median plate 2, plate IV slightly faceted in some individuals), presently there are no definitive elements to assign the Slovakian specimens to *P. xiai* or to a new species.

The present study reveals the presence of semicryptic species in the genus *Pseudechiniscus* (Fig. 6). At least seven different putative species are found: while for some of them there is at least a geographical subdivision (e.g. Italy and Iberian Peninsula), in other cases four and two different putative species are found in the same gathering (Mongolia C2592 and Mongolia C2595, respectively), with one putative species shared between the two sampling sites. The presence of cryptic species in tardigrades has been known since Faurby *et al.* (2008) found high genetic distances in a single morphotype of *Ramazzottius oberhaeuseri* (Doyère, 1840). Even though some criticisms have recently arisen about the cryptic status of these molecularly identified species (Stec *et al.*, 2018a), the fact that taxonomically important morphological characters are scarce in tardigrades must not be underrated. Actually, the application of an integrated approach has allowed the definition of many tardigrade species (Cesari *et al.*, 2009, 2011; 2016b; Bertolani *et al.*, 2011a, b; Guidetti *et al.*, 2013, 2014; Vicente *et al.*, 2013; Stec *et al.*, 2015, 2017a, b, c, 2018b, c, d, e; Gąsiorek *et al.*, 2016, 2017a, b, c, 2018b; Møbjerg *et al.*, 2016; Morek *et al.*, 2016; Zawierucha *et al.*, 2016, 2018; Roszkowska *et al.* 2017, 2018; Buda *et al.*, 2018; Kaczmarek *et al.*, 2018; Nowak & Stec, 2018; Perry *et al.*, 2018), but it also pointed out that many difficult taxonomic situations still exist in both Heterotardigrada and Eutardigrada, and it evidenced the surprisingly large presence of putative cryptic species in the phylum (Guidetti *et al.*, 2009, 2016, 2019; Guil & Giribet,

Figure 2. *Pseudechiniscus* specimens from Portugal (C3039), light microscopy (LM, phase contrast) and scanning electron microscopy (SEM). A, head with cephalic papilla (arrow, LM). B, head with cephalic papilla (arrow, SEM). C, terminal (caudal) plate (IV) (LM). D, terminal (caudal) plate (IV; SEM). E, ventral sculpture and male gonopore (arrow; LM). F, detail of the ventral sculpture and male gonopore (arrow, SEM). Pores in B, D, E are artefacts due to sample preparation. Scale bars: 10 µm (A, B, C, E, F); 20 µm (D).

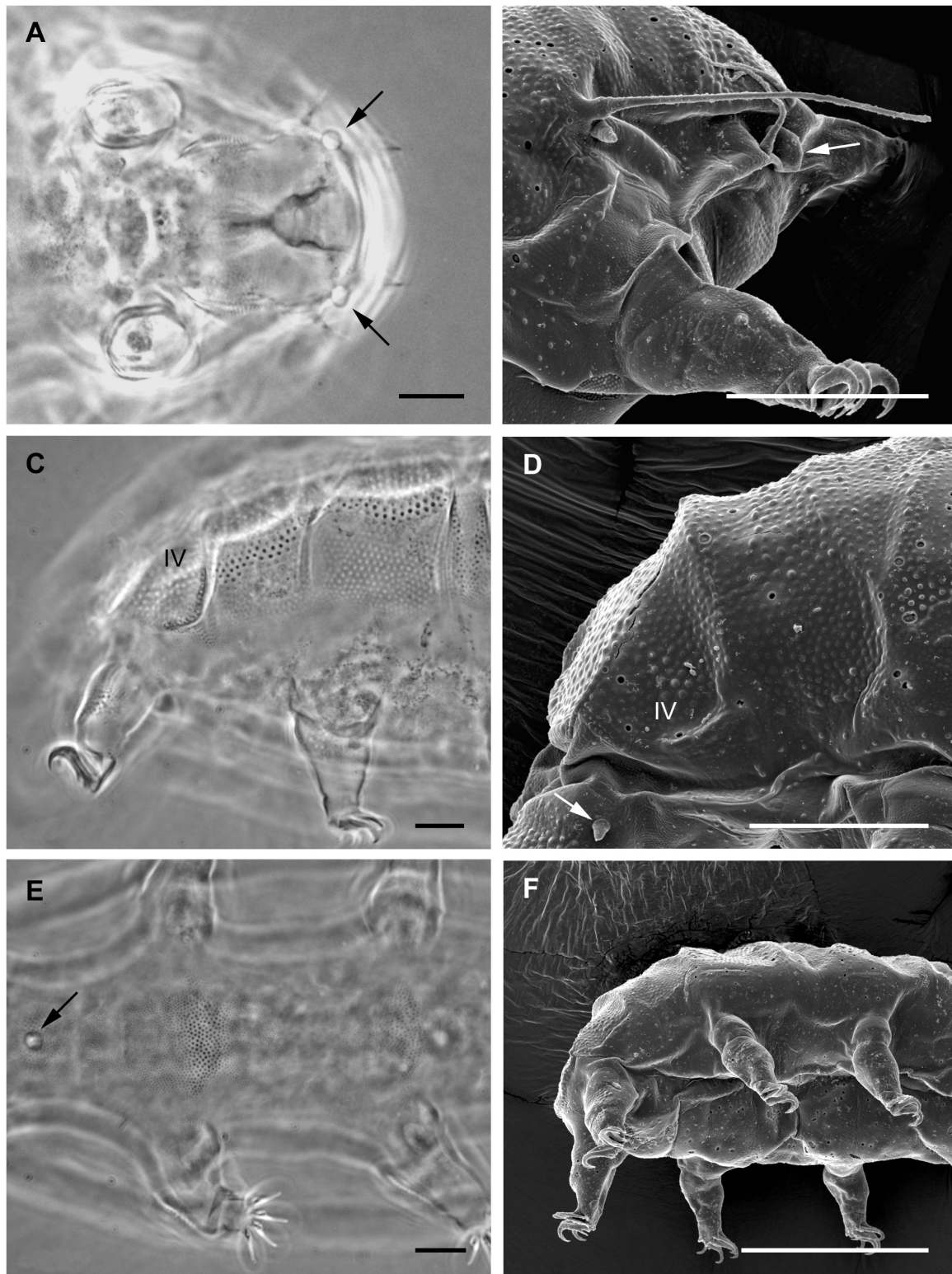


Figure 3. *Pseudechiniscus* specimens from Italy (C3842), light microscopy (LM, phase contrast) and scanning electron microscopy (SEM). A, cephalic papillae (arrows, LM). B, head with cephalic papilla (arrow, SEM). C, terminal (caudal) plate (IV, LM). D, terminal (caudal) plate (IV) and papilla (arrow) on the fourth pair of legs; SEM. E, ventral sculpture and male gonopore (arrow; LM). F, ventral sculpture (SEM). Pores in B, D, F are artefacts due to sample preparation. Scale bars: 10 μm (A, C, E); 20 μm (B, D); 40 μm (F).

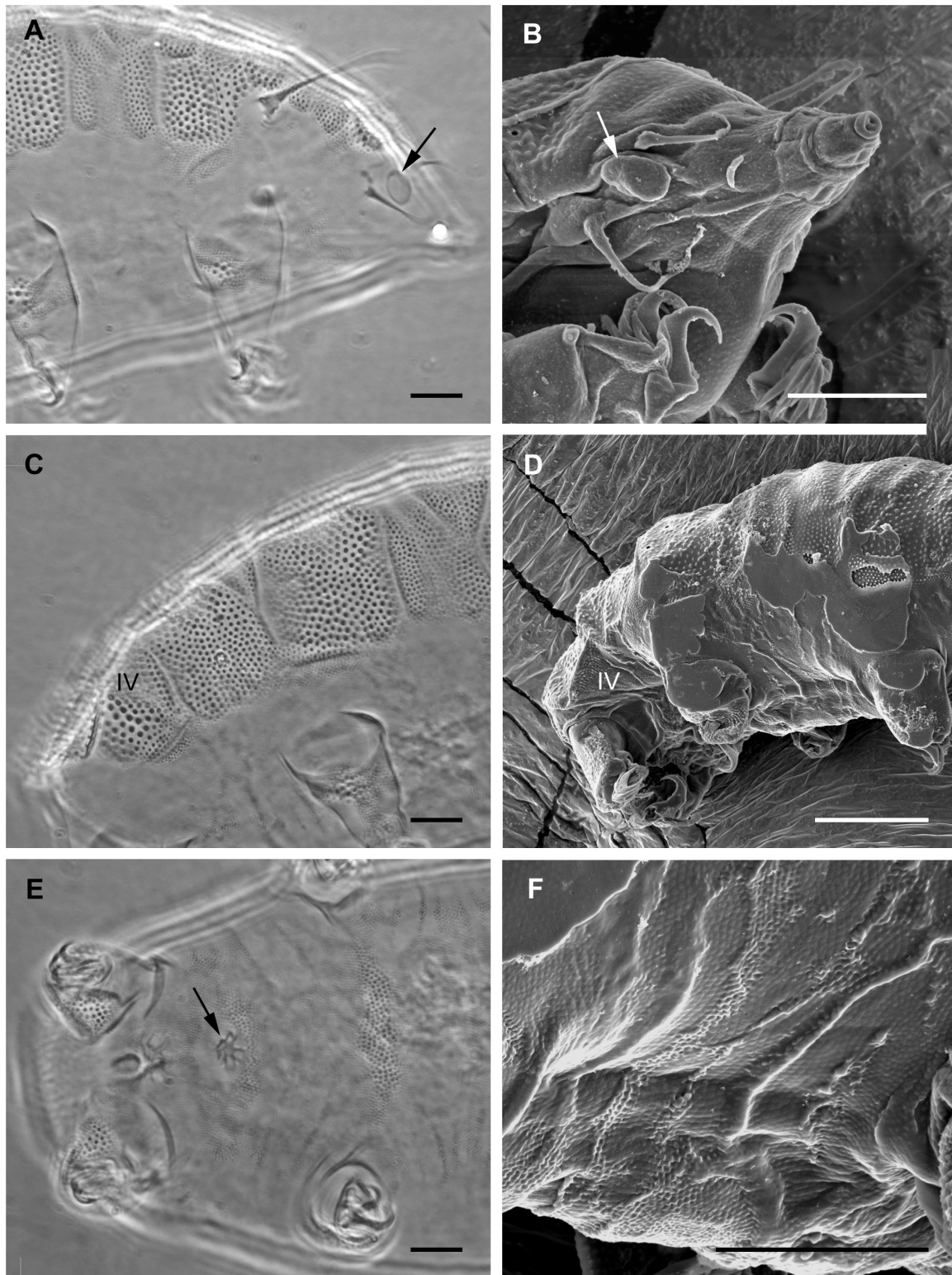


Figure 4. *Pseudechiniscus* specimens from Mongolia (C2592 and C2595), light microscopy (LM, phase contrast) and scanning electron microscopy (SEM). A, cephalic papilla (arrow, LM). B, head with cephalic papilla (arrow, SEM). C, terminal (caudal) plate (IV, LM). D, terminal (caudal) plate (IV, SEM). E, ventral sculpture and female gonopore (arrow; LM). F, detail of the cuticle ventral sculpture (SEM). Pores in A are artefacts due to sample preparation. Scale bars: 10 μm (A, B, C, E, F); 20 μm (D).

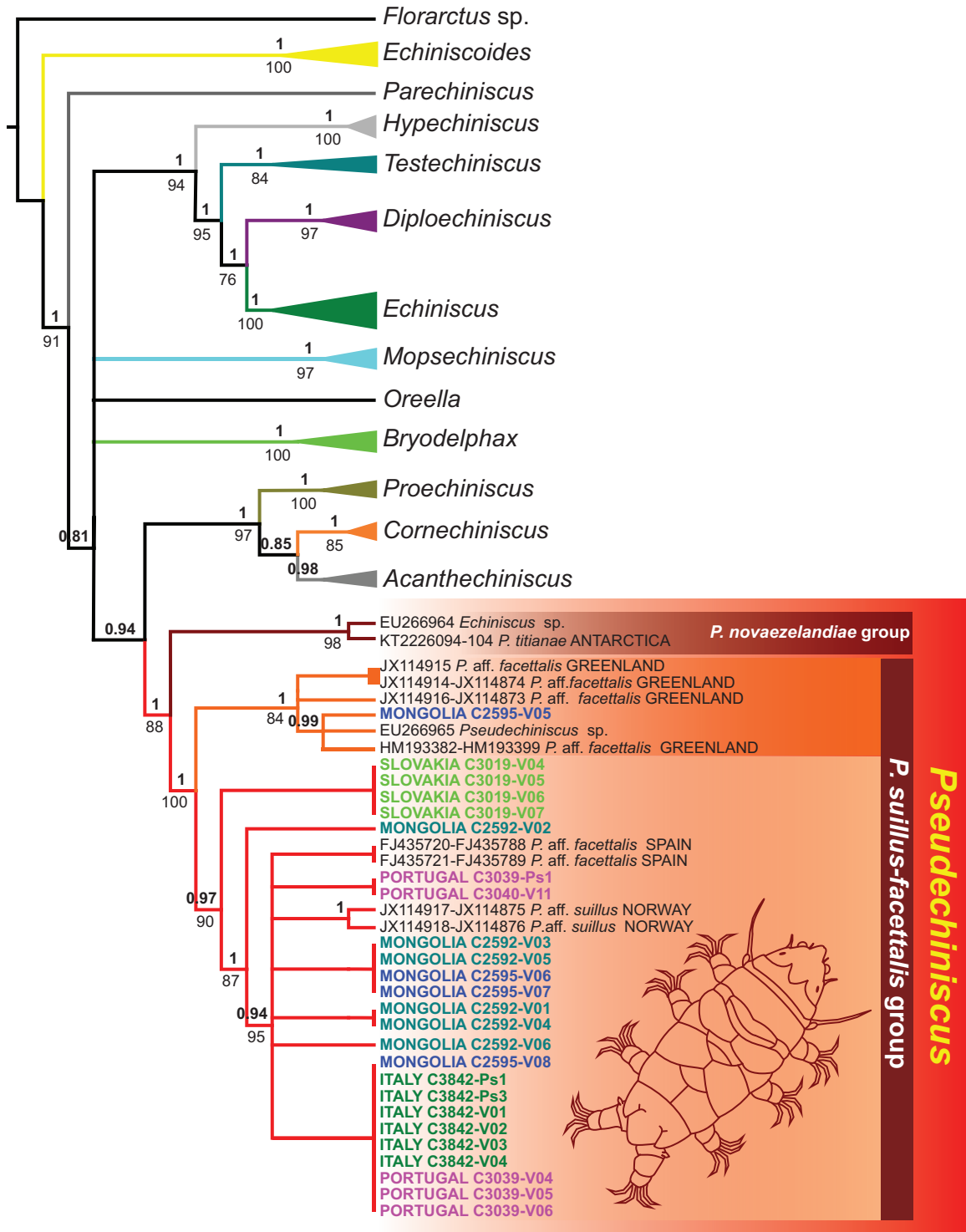


Figure 5. Phylogenetic reconstruction [Bayesian inference (BI) and maximum likelihood (ML) analyses] based on combined dataset (1652 bp of 18S+28S genes). Values in bold and above branches indicate posterior probability values (BI), while values below branches show bootstrap values (ML). Newly analysed specimens are in bold.

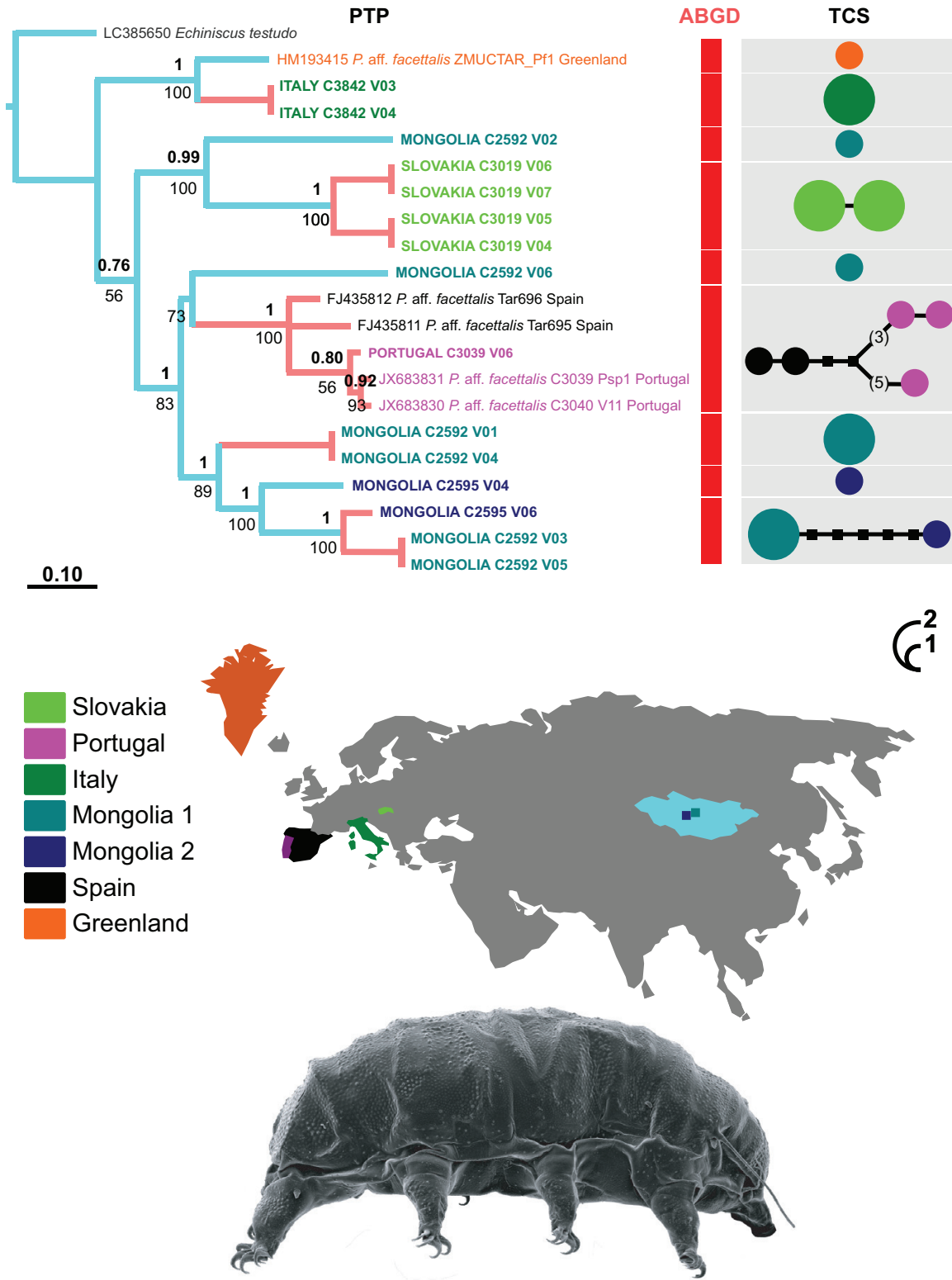


Figure 6. Left: tree resulting from the maximum likelihood (ML) and Bayesian inference (BI) analysis of 22 cytochrome *c* oxidase subunit I newly analysed *Pseudechiniscus* specimens and sequences from GenBank. Values in bold above branches point out posterior probability values (BI), while values below branches show bootstrap values (ML). Results of the Poisson tree process analysis are provided using differently coloured branches: putative species are indicated using transitions from

Table 2. List of unconfirmed candidate species (UCS) of *Pseudechiniscus* found in this study

UCS	Specimens
<i>Pseudechiniscus</i> aff. <i>facettalis</i> [Ca1; Cesari <i>et al.</i> , 2019]	PORTUGAL C3039 V06 JX683831 <i>P. aff. facettalis</i> C3039 Psp1 Portugal JX683830 <i>P. aff. facettalis</i> C3040 V11 Portugal FJ435812 <i>P. aff. facettalis</i> Tar696 Spain FJ435811 <i>P. aff. facettalis</i> Tar695 Spain
<i>Pseudechiniscus</i> aff. <i>suillus</i> [Ca1; Cesari <i>et al.</i> , 2019]	ITALY C3842 V03 ITALY C3842 V04
<i>Pseudechiniscus</i> aff. <i>suillus</i> [Ca2; Cesari <i>et al.</i> , 2019]	MONGOLIA C2592 V01 MONGOLIA C2592 V04
<i>Pseudechiniscus</i> aff. <i>suillus</i> [Ca3; Cesari <i>et al.</i> , 2019]	MONGOLIA C2595 V06 MONGOLIA C2592 V03 MONGOLIA C2592 V05
<i>Pseudechiniscus</i> aff. <i>suillus</i> [Ca4; Cesari <i>et al.</i> , 2019]	MONGOLIA C2595 V04
<i>Pseudechiniscus</i> aff. <i>suillus</i> [Ca5; Cesari <i>et al.</i> , 2019]	MONGOLIA C2592 V02
<i>Pseudechiniscus</i> aff. <i>suillus</i> [Ca6; Cesari <i>et al.</i> , 2019]	MONGOLIA C2592 V06
<i>Pseudechiniscus</i> aff. <i>xiai</i> [Ca1; Cesari <i>et al.</i> , 2019]	SLOVAKIA C3019 V04 SLOVAKIA C3019 V05 SLOVAKIA C3019 V06 SLOVAKIA C3019 V07

2009; Bertolani *et al.*, 2011b; Faurby *et al.*, 2011, 2012; Faurby & Barber, 2015; Cesari *et al.*, 2016a; Stec *et al.*, 2018a; Morek *et al.*, 2019). Presently, the most sensible solution would be to place species difficult to distinguish into the category of cryptic or semicryptic species (complexes that may display minor, but still detectable, morphological differences; Korshunova *et al.*, 2017) until new diagnosable characters are found (Bickford *et al.*, 2007). Evolutionary lineages identified only by molecular methods should not be described as new species, but temporarily be considered unidentified candidate species (UCS; Padial *et al.*, 2010). This will allow the flagging of potentially delicate situations and the call for the use of different approaches (e.g. karyological, ecological, ethological, etc.) and possible new genetic markers. The present taxonomic situation in the *P. suillus*–*facettalis* group appears intricate due to several factors: (1) the original description of *P. suillus* is dated and incomplete, (2) the discrimination between *P. suillus* and *P. facettalis* is problematic and (3) recent morphological (e.g. ventral cuticular pattern) and morphometric characters are still not applied

to a large number of taxa in order to be reliable for a clear intra- and interspecific discrimination. Therefore, considering the low morphological variability and the lack of morphometric data in our studied populations, we designate eight *Pseudechiniscus* (semi)cryptic species as UCS. Following Padial *et al.* (2010), these UCS should be defined with the combination of the binomial name of the most similar species, followed (in square brackets) by the abbreviation ‘Ca’ (for candidate) with an attached numerical code referring to the particular candidate species and terminating with the author name and year of publication of the article (i.e. this paper) in which the lineage was first discovered. In order to be more precise, we also have decided to designate these lineages as part of a species group by adding the *affinis* designation (aff.). One UCS (Portuguese specimens) is designed as *P. aff. facettalis* because the obtained sequences match with four GenBank sequences assigned to *P. facettalis* (FJ435811-2; JX683830-1). Another UCS (Slovak specimens) is attributed to *P. aff. xiai* because it is the most similar described species, even though some small morphological differences are

blue-coloured branches to red-coloured branches. Newly scored haplotypes are in bold. The scale bar shows the number of substitutions per nucleotide position. Centre: orange rectangles represent specimens grouped by ABGD analysis. Right: haplotype network of COI gene in *Pseudechiniscus*. Circles represent haplotypes, while circle surface denotes haplotype frequency. Small black squares indicate missing/ideal haplotypes. Networks falling below the value of the 95% connection limit are disconnected. Grey rectangles delimitate putative species.

present (see above). Finally, all other UCS are designed as *P. aff. suillus*, as they are not distinguishable from the original description of this taxon. Table 2 lists all the UCS found in this study.

The integrated approach to the study of *Pseudechiniscus* allows confirmation of its monophyly and highlights the relationships in the taxon. The present study also, for the first time, reports the presence of semicryptic species in the *P. suillus-facettalis* group, and underlines the taxonomic problems related to this group. New studies will be performed in the future to further highlight the taxonomic relationships and the biodiversity of this peculiar tardigrade taxon.

ACKNOWLEDGEMENTS

This work was supported by the grant from the European Commission (FPVII) Integrated Infrastructure Initiative program SYNTHESYS (ref. no. DK-TAF-4619) to MC. We thank Arctic Station, Qeqertarsuaq, Greenland for permit to collect *Pseudechiniscus* and other genera of heterotardigrades in the protected area of the Arctic Station.

REFERENCES

- Bertolani R, Biserov VI, Rebecchi L, Cesari M. 2011a.** Taxonomy and biogeography of tardigrades using an integrated approach: new results on species of the *Macrobotus hufelandi* group. *Invertebrate Zoology* **8**: 23–36.
- Bertolani R, Rebecchi L, Giovannini I, Cesari M. 2011b.** DNA barcoding and integrative taxonomy of *Macrobotus hufelandi* C. A. S. Schultze 1834, the first tardigrade species to be described, and some related species. *Zootaxa* **2997**: 19–36.
- Bickford D, Lohman DJ, Sodhi NS, Ng PK, Meier R, Winker K, Ingram KK, Das I. 2007.** Cryptic species as a window on diversity and conservation. *Trends in Ecology and Evolution* **22**: 148–155.
- Buda J, Olszanowski Z, Wierzoń M, Zawierucha K. 2018.** Tardigrades and oribatid mites in bryophytes from geothermally active lava fields (Krafla, Iceland) and the description of *Pilatobius islandicus* sp. nov. (Eutardigrada). *Polish Polar Research* **39**: 425–453.
- Cesari M, Bertolani R, Rebecchi L, Guidetti R. 2009.** DNA barcoding in Tardigrada: the first case study on *Macrobotus macrocalix* Bertolani & Rebecchi 1993 (Eutardigrada, Macrobiotidae). *Molecular Ecology Resources* **9**: 699–706.
- Cesari M, Giovannini I, Bertolani R, Rebecchi L. 2011.** An example of problems associated with DNA barcoding in tardigrades: a novel method for obtaining voucher specimens. *Zootaxa* **3104**: 42–51.
- Cesari M, McInnes SJ, Bertolani R, Rebecchi L, Guidetti R. 2016a.** Genetic diversity and biogeography of the south polar water bear *Acutuncus antarcticus* (Eutardigrada: Hypsibiidae) – evidence that it is a truly pan-Antarctic species. *Invertebrate Systematics* **30**: 635–649.
- Cesari M, Vecchi M, Palmer A, Bertolani R, Pilato G, Rebecchi L, Guidetti R. 2016b.** What if the claws are reduced? Morphological and molecular phylogenetic relationships of the genus *Haplomacrobotus* May, 1948 (Eutardigrada, Parachela). *Zoological Journal of the Linnean Society* **178**: 819–827.
- Clement M, Posada D, Crandall K. 2000.** TCS: a computer program to estimate gene genealogies. *Molecular Ecology* **9**: 1657–1660.
- Darriba D, Taboada GL, Doallo R, Posada D. 2012.** jModelTest 2: more models, new heuristics and parallel computing. *Nature Methods* **9**: 772.
- Dastych H. 1984.** The tardigrada from Antarctic with descriptions of several new species. *Acta Zoologica Cracoviensia* **27**: 377–436.
- Dastych H. 1988.** The Tardigrada of Poland. *Monografie Fauny Polski* **16**: 1–255.
- Degma P, Guidetti R. 2007.** Notes to the current checklist of Tardigrada. *Zootaxa* **1579**: 41–53.
- Degma P, Bertolani R, Guidetti R. 2018.** Actual checklist of Tardigrada species. 48. Available at: <http://www.tardigrada.modena.unimo.it/miscellanea/Actual%20checklist%20of%20Tardigrada.pdf> (accessed 6 June 2019).
- Faurby S, Barber PH. 2015.** Extreme population subdivision despite high colonization ability: contrasting regional patterns in intertidal tardigrades from the west coast of North America. *Journal of Biogeography* **42**: 1006–1017.
- Faurby S, Jönsson KI, Rebecchi L, Funch P. 2008.** Variation in anhydrobiotic survival of two eutardigrade morphospecies: a story of cryptic species and their dispersal. *Journal of Zoology* **275**: 139–145.
- Faurby S, Jørgensen A, Kristensen RM, Funch P. 2011.** Phylogeography of North Atlantic intertidal tardigrades: refugia, cryptic speciation and the history of the Mid-Atlantic Islands. *Journal of Biogeography* **38**: 1613–1624.
- Faurby S, Jørgensen A, Kristensen RM, Funch P. 2012.** Distribution and speciation in marine intertidal tardigrades: testing the roles of climatic and geographical isolation. *Journal of Biogeography* **39**: 1596–1607.
- Fontoura P, Morais P. 2011.** Assessment of traditional and geometric morphometrics for discriminating cryptic species of the *Pseudechiniscus suillus* complex (Tardigrada, Echiniscidae). *Journal of Zoological Systematics and Evolutionary Research* **49**: 26–33.
- Gąsiorek P, Degma P. 2018.** Three Echiniscidae species (Tardigrada: Heterotardigrada) new to the Polish fauna, with the description of a new gonochoristic *Bryodelphax* Thulin, 1928. *Zootaxa* **4410**: 77–96.
- Gąsiorek P, Stec D, Morek W, Zawierucha K, Kaczmarek Ł, Lachowska-Cierlik D, Michalczyk Ł. 2016.** An integrative revision of *Mesocrista* Pilato, 1987 (Tardigrada: Eutardigrada: Hypsibiidae). *Journal of Natural History* **50**: 2803–2828.
- Gąsiorek P, Stec D, Morek W, Michalczyk Ł. 2017a.** An integrative redescription of *Echiniscus testudo* (Doyère, 1840), the nominal taxon for the class Heterotardigrada

- (Ecdysozoa: Panarthropoda: Tardigrada). *Zoologischer Anzeiger* **270**: 107–122.
- Gąsiorek P, Stec D, Morek W, Marnissi J, Michalczyk Ł. 2017b.** The tardigrade fauna of Tunisia, with an integrative description of *Bryodelphax maculatus* sp. nov. (Heterotardigrada: Echiniscidae). *African Zoology* **52**: 77–89.
- Gąsiorek P, Zawierucha K, Stec D, Michalczyk Ł. 2017c.** Integrative redescription of a common Arctic water bear *Pilatobius recamieri* (Richters, 1911). *Polar Biology* **40**: 2239–2252.
- Gąsiorek P, Stec D, Zawierucha K, Kristensen RM, Michalczyk Ł. 2018a.** Revision of *Testechiniscus* Kristensen, 1987 (Heterotardigrada: Echiniscidae) refutes the polar-temperate distribution of the genus. *Zootaxa* **4472**: 261–297.
- Gąsiorek P, Stec D, Morek W, Michalczyk Ł. 2018b.** An integrative redescription of *Hypsibius dujardini* (Doyère, 1840), the nominal taxon for Hypsibioidea (Tardigrada: Eutardigrada). *Zootaxa* **4415**: 45–75.
- Gąsiorek P, Suzuki A, Kristensen RM, Lachowska-Cierlik D, Michalczyk Ł. 2018c.** Untangling the *Echiniscus* Gordian knot: *Stellariscus* gen. nov. (Heterotardigrada: Echiniscidae) from Far East Asia. *Invertebrate Systematics* **32**: 1234–1247.
- Grothman GT, Johanson C, Chilton G, Kagoshima H, Tsujimoto M, Suzuki AC. 2017.** Gilbert Rahm and the status of Mesotardigrada Rahm, 1937. *Zoological Sciences* **34**: 5–10.
- Guidetti R, Bertolani R. 2005.** Tardigrade taxonomy: an updated check list of the taxa and a list of characters for their identification. *Zootaxa* **845**: 1–46.
- Guidetti R, Schill RO, Bertolani R, Dandekar T, Wolf M. 2009.** New molecular data for tardigrade phylogeny, with the erection of *Paramacrobotus* gen. nov. *Journal of Zoological Systematics and Evolutionary Research* **47**: 315–321.
- Guidetti R, Peluffo JR, Rocha AM, Cesari M, Moly de Peluffo MC. 2013.** The morphological and molecular analyses of a new South American urban tardigrade offer new insights on the biological meaning of the *Macrobotus hufelandi* group of species (Tardigrada: Macrobiotidae). *Journal of Natural History* **47**: 2409–2426.
- Guidetti R, Rebecchi L, Cesari M, McInnes SJ. 2014.** *Mopsechiniscus franciscae*, a new species of a rare genus of Tardigrada from continental Antarctica. *Polar Biology* **37**: 1221–1233.
- Guidetti R, Rebecchi L, Bertolani R, Jönsson KI, Kristensen RM, Cesari M. 2016.** Morphological and molecular analyses on *Richtersius* (Eutardigrada) diversity reveal its new systematic position and lead to the establishment of a new genus and a new family within Macrobiotidea. *Zoological Journal of the Linnean Society* **178**: 834–845.
- Guidetti R, Cesari M, Bertolani R, Altiero T, Rebecchi L. 2019.** High diversity in species, reproductive modes and distribution within the *Paramacrobotus richtersi* complex (Eutardigrada, Macrobiotidae). *Zoological Letters* **5**: 1.
- Guil N, Giribet G. 2009.** Fine scale population structure in the *Echiniscus blumi-canadensis* series (Heterotardigrada, Tardigrada) in an Iberian mountain range. When morphology fails to explain genetic structure. *Molecular Phylogenetics and Evolution* **51**: 606–613.
- Guil N, Giribet G. 2012.** A comprehensive molecular phylogeny of tardigrades – adding genes and taxa to a poorly resolved phylum-level phylogeny. *Cladistics* **28**: 21–49.
- Guil N, Jørgensen A, Giribet G, Kristensen RM. 2013.** Congruence between molecular phylogeny and cuticular design in Echiniscoidea (Tardigrada, Heterotardigrada). *Zoological Journal of the Linnean Society* **169**: 713–736.
- Guil N, Jørgensen A, Kristensen RM. 2019.** An upgraded comprehensive multilocus phylogeny of the Tardigrada tree of life. *Zoological Scripta* **48**: 120–137.
- Guindon S, Gascuel O. 2003.** A simple, fast and accurate method to estimate large phylogenies by maximum-likelihood. *Systematic Biology* **52**: 696–704.
- Hart MW, Sunday J. 2007.** Things fall apart: biological species form unconnected parsimony networks. *Biology Letters* **3**: 509–512.
- Huelsenbeck JP, Ronquist F. 2001.** MRBAYES: Bayesian inference of phylogeny. *Bioinformatics* **17**: 754–755.
- Jørgensen A, Faurby S, Hansen JG, Møbjerg N, Kristensen RM. 2010.** Molecular phylogeny of Arthrotardigrada (Tardigrada). *Molecular Phylogenetics and Evolution* **54**: 1006–1015.
- Jørgensen A, Møbjerg N, Kristensen RM. 2011.** Phylogeny and evolution of the Echiniscidae (Echiniscoidea, Tardigrada) – an investigation of the congruence between molecules and morphology. *Journal of Zoological Systematics and Evolutionary Research* **49**: 6–16.
- Kaczmarek Ł, Zawierucha K, Buda J, Stec D, Gawlak M, Michalczyk Ł, Roszkowska M. 2018.** An integrative redescription of the nominal taxon for the *Mesobiotus harmsworthi* group (Tardigrada: Macrobiotidae) leads to descriptions of two new *Mesobiotus* species from Arctic. *PLoS One* **13**: e0204756.
- Kathman RD, Dastyeh H. 1990.** Some Echiniscidae (Tardigrada: Heterotardigrada) from Vancouver Island, British Columbia, Canada. *Canadian Journal of Zoology* **68**: 699–706.
- Katoh K, Misawa K, Kuma KI, Miyata T. 2002.** MAFFT: a novel method for rapid multiple sequence alignment based on fast Fourier transform. *Nucleic Acids Research* **30**: 3059–3066.
- Katoh K, Rozewicki J, Yamada KD. 2017.** MAFFT online service: multiple sequence alignment, interactive sequence choice and visualization. *Briefings in Bioinformatics*: 1–7. doi:10.1093/bib/bbx108
- Korshunova T, Martynov A, Bakken T, Picton B. 2017.** External diversity is restrained by internal conservatism: new nudibranch mollusc contributes to the cryptic species problem. *Zoologica Scripta* **46**: 683–692.
- Kristensen RM. 1987.** Generic revision of the Echiniscidae (Heterotardigrada), with a discussion of the origin of the family. In: Bertolani R, ed. *Biology of tardigrades. Selected symposia and monographs. U.Z.I., Vol. 1*. Modena: Mucchi, 261–335.
- Kumar S, Stecher G, Tamura K. 2016.** MEGA7: molecular evolutionary genetics analysis version 7.0 for bigger datasets. *Molecular Biology and Evolution* **33**: 1870–1874.

- Marcus E. 1929.** Tardigrada. In: Bronn HG, ed. *Klassen und Ordnungen des Tierreichs. Sec. 4, Part 3, Vol. 5.* Leipzig: Akademische Verlagsgesellschaft, 1–608.
- Maucci W. 1973–74.** Tardigradi muscicoli del Carso Triestino. *Bollettino della Società Adriatica di Scienze di Trieste* **59**: 107–150.
- Miller MA, Pfeiffer W, Schwartz T. 2010.** Creating the CIPRES science gateway for inference of large phylogenetic trees. In: *Proceedings of the Gateway Computing Environments Workshop (GCE)*, 14 November 2010, New Orleans, 1–8.
- Møbjerg N, Kristensen RM, Jørgensen A. 2016.** Data from new taxa infer *Isoechiniscoides* gen. nov. and increase the phylogenetic and evolutionary understanding of echiniscoidid tardigrades (Echiniscoidea: Tardigrada). *Zoological Journal of the Linnean Society* **178**: 804–818.
- Morek W, Gąsiorek P, Stec D, Blagden B, Michalczyk Ł. 2016.** Experimental taxonomy exposes ontogenetic variability and elucidates the taxonomic value of claw configuration in *Milnesium* Doyère, 1840 (Tardigrada: Eutardigrada: Apochela). *Contributions to Zoology* **85**: 173–200.
- Morek W, Stec D, Gąsiorek P, Surmacz B, Michalczyk Ł. 2019.** *Milnesium tardigradum* Doyère, 1840: The first integrative study of interpopulation variability in a tardigrade species. *Journal of Zoological Systematics and Evolutionary Research* **57**: 1–23.
- Nowak B, Stec D. 2018.** An integrative description of *Macrobotus hanna* sp. nov. (Tardigrada: Eutardigrada: Macrobiotidae: *hufelandi* group) from Poland. *Turkish Journal of Zoology* **42**: 269–286.
- Padial JM, Miralles A, De la Riva I, Vences M. 2010.** The integrative future of taxonomy. *Frontiers in Zoology* **7**: 16.
- Perry ES, Rawson P, Ameral NJ, Miller WR, Miller JD. 2018.** *Echiniscoides rugostellatus* a new marine tardigrade from Washington, USA (Heterotardigrada: Echiniscoidea: Echiniscoididae: Echiniscoidinae). *Proceedings of the Biological Society of Washington* **131**: 182–193.
- Petersen B. 1951.** The tardigrade fauna of Greenland. *Meddelelser om Grønland* **150**: 1–94.
- Puillandre N, Lambert A, Brouillet S, Achaz G. 2012.** ABGD, Automatic Barcode Gap Discovery for primary species delimitation. *Molecular Ecology* **21**: 1864–1877.
- Rahm G. 1937.** A new ordo of tardigrades from the hot springs of Japan (Furu-yu section, Unzen). *Annotationes Zoologicae Japonensis* **16**: 345–353.
- Ramazzotti G, Maucci W. 1983.** Il Phylum Tardigrada. Terza edizione riveduta e corretta. *Memorie dell'Istituto Italiano di Idrobiologia* **41**: 1–1012.
- Rambaut A, Drummond AJ. 2007.** Tracer v1.5. Available at: <http://beast.bio.ed.ac.uk> (accessed 6 June 2019).
- Ronquist F, Huelsenbeck JP. 2003.** MRBAYES 3: Bayesian phylogenetic inference under mixed models. *Bioinformatics* **19**: 1572–1574.
- Roszkowska M, Ostrowska M, Stec D, Janko K, Kaczmarek Ł. 2017.** *Macrobotus polypiformis* sp. nov., a new tardigrade (Macrobiotidae: *hufelandi* group) from the Ecuadorian Pacific coast, with remarks on the claw abnormalities in eutardigrades. *European Journal of Taxonomy* **327**: 1–19.
- Roszkowska M, Stec D, Gawlak M, Kaczmarek Ł. 2018.** An integrative description of a new tardigrade species *Mesobiotus romani* sp. nov. (Macrobiotidae: *harmsworthi* group) from the Ecuadorian Pacific coast. *Zootaxa* **4450**: 550–564.
- Santos AM, Cabezas MP, Tavares AI, Xavier R, Branco M. 2015.** tcsBU: a tool to extend TCS network layout and visualization. *Bioinformatics* **32**: 627–628.
- Stamatakis A, Hoover P, Rougemont J. 2008.** A rapid bootstrap algorithm for the RAxML web servers. *Systematic Biology* **57**: 758–771.
- Stamatakis A. 2006.** RAxML-VI-HPC: maximum likelihood-based phylogenetic analyses with thousands of taxa and mixed models. *Bioinformatics* **22**: 2688–2690.
- Stec D, Smolak R, Kaczmarek Ł, Michalczyk Ł. 2015.** An integrative description of *Macrobotus paulinae* sp. nov. (Tardigrada: Eutardigrada: Macrobiotidae: *hufelandi* group) from Kenya. *Zootaxa* **4052**: 501–526.
- Stec D, Zawierucha K, Michalczyk Ł. 2017a.** An integrative description of *Ramazzottius subanomalous* – (Tardigrada) from Poland. *Zootaxa* **4300**: 403–420.
- Stec D, Morek W, Gąsiorek P, Blagden B, Michalczyk Ł. 2017b.** Description of *Macrobotus scoticus* sp. nov. (Tardigrada: Macrobiotidae: *hufelandi* Group) from Scotland by means of integrative taxonomy. *Annales Zoologici* **67**: 181–197.
- Stec D, Roszkowska M, Kaczmarek Ł, Michalczyk Ł. 2017c.** *Paramacrobotus lachowskae*, a new species of Tardigrada from Colombia (Eutardigrada: Parachela: Macrobiotidae). *New Zealand Journal of Zoology* **45**: 43–60.
- Stec D, Morek W, Gąsiorek P, Michalczyk Ł. 2018a.** Unmasking hidden species diversity within the *Ramazzottius oberhaeuseri* complex, with an integrative redescription of the nominal species for the family Ramazzottiidae (Tardigrada: Eutardigrada: Parachela). *Systematics and Biodiversity* **16**: 357–376.
- Stec D, Arakawa K, Michalczyk Ł. 2018b.** An integrative description of *Macrobotus shonanicus* sp. nov. (Tardigrada: Macrobiotidae) from Japan with notes on its phylogenetic position within the *hufelandi* group. *PLoS One* **13**: e0192210.
- Stec D, Krzywański Ł, Michalczyk Ł. 2018c.** Integrative description of *Macrobotus canaricus* sp. nov. with notes on *M. recens* (Eutardigrada: Macrobiotidae). *European Journal of Taxonomy* **452**: 1–36.
- Stec D, Kristensen RM, Michalczyk Ł. 2018d.** Integrative taxonomy identifies *Macrobotus papei*, a new tardigrade species of the *Macrobotus hufelandi* complex (Eutardigrada: Macrobiotidae) from the Udzungwa Mountains National Park (Tanzania). *Zootaxa* **4446**: 273–291.
- Stec D, Roszkowska M, Kaczmarek Ł, Michalczyk Ł. 2018e.** An integrative description of a population of *Mesobiotus radiatus* (Pilato, Binda & Catanzaro, 1991) from Kenya. *Turkish Journal of Zoology* **42**: 523–540.
- Tang CQ, Humphreys AM, Fontaneto D, Barraclough TG. 2014.** Effects of phylogenetic reconstruction method of the robustness of species delimitation using single-locus data. *Methods in Ecology and Evolution* **5**: 1086–1094.

- Templeton AR, Crandall KA, Sing CF. 1992.** A cladistic analysis of phenotypic associations with haplotypes inferred from restriction endonuclease mapping and DNA sequence data. III. Cladogram estimation. *Genetics* **132**: 619–633.
- Vecchi M, Cesari M, Bertolani R, Jönsson KI, Rebecchi L, Guidetti R. 2016.** Integrative systematic studies on tardigrades from Antarctica identify new genera and new species within Macrobiotidea and Echiniscoidea. *Invertebrate Systematics* **30**: 303–322.
- Vicente F, Fontoura P, Cesari M, Rebecchi L, Guidetti R, Serrano A, Bertolani R. 2013.** Integrative taxonomy allows the identification of synonymous species and the erection of a new genus of Echiniscidae (Tardigrada, Heterotardigrada). *Zootaxa* **3613**: 557–572.
- Wang L, Xue J, Xiaochen L. 2018.** A description of *Pseudechiniscus xiai* sp. nov., with a key to genus *Pseudechiniscus* in China. *Zootaxa* **4388**: 255–264.
- Zawierucha K, Koliczka M, Kaczmarek Ł. 2016.** Re-description of the Arctic tardigrade *Tenuibiotus voronkovi* (Tumanov, 2007) (Eutardigrada; Macrobiotidea), with the first molecular data for the genus. *Zootaxa* **4196**: 498–510.
- Zawierucha K, Stec D, Lachowska-Cierlik D, Takeuchi N, Li Z, Michalczyk Ł. 2018.** High mitochondrial diversity in a new water bear species (Tardigrada: Eutardigrada) from mountain glaciers in Central Asia, with the erection of a new genus *Cryoconicus*. *Annales Zoologici* **68**: 179–201.
- Zhang J, Kapli P, Pavlidis P, Stamatakis A. 2013.** A general species delimitation method with applications to phylogenetic placements. *Bioinformatics* **29**: 2869–2876.

SUPPORTING INFORMATION

Additional Supporting Information may be found in the online version of this article at the publisher's web-site.

Table S1. GenBank accession numbers for the newly analysed *Pseudechiniscus* specimens. *na*: not available.

Table S2. List of the 18S, 28S and COI sequences from GenBank used for comparison.

Table S3. Uncorrected p-distance computed among all Echiniscidae specimens.