

This is the peer reviewed version of the following article:

Lipid profile and growth of black soldier flies (*Hermetia illucens*, Stratiomyidae) reared on by-products from different food chains / HADJ SAADOUN, Jasmine; Montevercchi, Giuseppe; Zanasi, Luca; Bortolini, Sara; Macavei, LAURA IOANA; Masino, Francesca; Maistrello, Lara; Antonelli, Andrea. - In: JOURNAL OF THE SCIENCE OF FOOD AND AGRICULTURE. - ISSN 1097-0010. - 100:9(2020), pp. 3648-3657. [10.1002/jsfa.10397]

Terms of use:

The terms and conditions for the reuse of this version of the manuscript are specified in the publishing policy. For all terms of use and more information see the publisher's website.

08/02/2025 08:16

(Article begins on next page)

Lipid profile and growth of black soldier flies (*Hermetia illucens*, Stratiomyidae) reared on by-products from different food chains

Journal:	<i>Journal of the Science of Food and Agriculture</i>
Manuscript ID	JSFA-19-3593.R1
Wiley - Manuscript type:	Research Article
Date Submitted by the Author:	n/a
Complete List of Authors:	<p>Hadj Saadoun, Jasmine; University of Modena and Reggio Emilia, Department of Life Sciences (Agro-Food Science Area), BIOGEST - SITEIA Interdepartmental Centre</p> <p>Montevecchi, Giuseppe; University of Modena and Reggio Emilia, Department of Life Sciences (Agro-Food Science Area), BIOGEST - SITEIA Interdepartmental Centre</p> <p>Zanasi, Luca; University of Modena and Reggio Emilia, Department of Life Sciences (Agro-Food Science Area), BIOGEST - SITEIA Interdepartmental Centre</p> <p>Bortolini, Sara; University of Modena and Reggio Emilia, Department of Life Sciences (Agro-Food Science Area), BIOGEST - SITEIA Interdepartmental Centre</p> <p>Macavei, Laura; University of Modena and Reggio Emilia, Department of Life Sciences (Agro-Food Science Area), BIOGEST - SITEIA Interdepartmental Centre</p> <p>Masino, Francesca; University of Modena and Reggio Emilia, Department of Life Sciences (Agro-Food Science Area), BIOGEST - SITEIA Interdepartmental Centre</p> <p>Maistrello, Lara; Università degli Studi di Modena e Reggio Emilia Dipartimento di Scienze della Vita, Dipartimento di Scienze della Vita</p> <p>Antonelli, Andrea; University of Modena and Reggio Emilia, Department of Life Sciences (Agro-Food Science Area), BIOGEST - SITEIA Interdepartmental Centre</p>
Key Words:	<i>Hermetia illucens</i> , waste valorization, food chain by-products, prepupal fatty acids profile

SCHOLARONE™
 Manuscripts

1
2
3 1 **Lipid profile and growth of black soldier flies (*Hermetia illucens*, Stratiomyidae) reared**
4
5 2
6 **on by-products from different food chains**
7
8 3
9

10 4 **Short running title:** Lipid profile and growth of *Hermetia illucens* reared on food by-
11
12 products
13
14 5
15 6
16

17 7 Jasmine Hadj Saadoun,¹ Giuseppe Montevecchi*, Luca Zanasi, Sara Bortolini,² Laura Ioana
18
19 8 Macavei, Francesca Masino, Lara Maistrello, and Andrea Antonelli
20

21 9
22
23
24 10 Department of Life Sciences (Agro-Food Science Area), BIOGEST - SITEIA
25
26 11 Interdepartmental Centre, University of Modena and Reggio Emilia, Piazzale Europa 1,
27
28 12 42124 Reggio Emilia, Italy.
29
30

31 13
32
33 14
34
35 15
36
37 16 * Correspondence to: Giuseppe Montevecchi, Department of Life Sciences (Agro-Food
38
39 17 Science Area), BIOGEST - SITEIA Interdepartmental Centre, University of Modena and
40
41 18 Reggio Emilia, Piazzale Europa 1, 42124 Reggio Emilia
42
43
44 19 E-mail: giuseppe.montevecchi@unimore.it
45
46
47
48
49
50
51
52
53
54
55
56
57

58 ¹ Department of Food and Drug, University of Parma, Viale Area delle Scienze 49/a, 43124 Parma, Italy

59 ² Faculty of Science and Technology, Free University of Bozen-Bolzano, Piazza Università 5, 39100 Bolzano,
60 Italy

21 Abstract

22 **BACKGROUND:** The total amount of bio-waste produced annually in the EU by the food
23 and beverage chains is estimated at 37 Mtons. The possibility to use insects for the
24 valorization of **by-products** from these value chains may represent a sustainable solution.
25 This study aims at investigating **the by-products obtained from different food chains for the**
26 **rearing of black soldier fly prepupae to evaluate lipid content and profile and outline its**
27 **possible applications.**

28 The substrates used in this experiment were: (i) industrial **by-products (brewery spent grains,**
29 **cow's milk whey, grape stalks, and tomato peels and seeds)** and (ii) **by-products from**
30 **retailers (bread dough, fish scraps, and spent coffee ground).** Fat extracted from prepupae
31 using an adjusted Folch method was utilized for total lipid content and fatty acids profile.

32 **RESULTS:** Best larval performances were obtained from beer (**0.22 g_{weight} per prepupa**),
33 tomato (**0.19 g_{weight} per prepupa**), and cheese (**0.14 g_{weight} per prepupa**) food-chain **by-**
34 **products.** The extremely different composition of the substrate was reflected in the
35 **differentiated lipid profile of black soldier fly prepupae and in a range of ratios between**
36 **unsaturated and saturated fatty acids comprised from 0.37 for cow's milk way to 1.34 for**
37 **tomato peels and seeds.**

38 **CONCLUSION:** The high content and type of lipids, together with the proteins, and chitin
39 extracted from prepupae are high-value bio-based products that could be used in the
40 feed/food industry or for the development of innovative biomaterials, such as biodiesel.
41 These results suggest **that food chain by-products are the best candidate for insect-**
42 **bioconversion purposes.**

43
44 **Keywords:** *Hermetia illucens*; waste valorization; food chain **by-products**; prepupal fatty
45 acids profile

47 INTRODUCTION

48 Waste management is one of the main problems the world population has been facing in
49 modern times.^{1,2} The amount of organic biodegradable waste produced by the EU is
50 estimated at 76-102 Mtons per year of food and gardening waste, included in the solid
51 undifferentiated municipal waste.³ The amount of waste brought about by food and beverage
52 companies reaches 37 Mtons per year and is often considered a net loss.³ This loss may
53 originate from different stages in the food-chain: production scraps of agro-food industry,
54 discards due to commercial or aesthetical reasons or close to an imminent expiration date,
55 and goods unsold by retailers and vending companies.⁴

56 In 2008, the European Union (EU) unequivocally established the order of priority in the
57 waste treatment, the first being waste reuse and the last its landfill disposal.⁵ It later
58 committed itself in a great effort to reduce or reuse bio-waste. In 2015, the European
59 Commission adopted the Circular Economy Action Plan,⁶ which includes measures aimed at
60 stimulating the European transition towards a circular economy and fostering sustainable
61 economic growth. In particular, all Member States are required to take specific measures to
62 cope with food waste.

63 Emilia-Romagna is one of the most important regions in Italy and Europe for agri-food
64 production, therefore the amount of bio-waste accumulated by the food-chain companies is
65 huge. The main production activities in the Emilia-Romagna region include tomato
66 processing, winemaking and, dairy productions. These food chains cause the accumulation of
67 large amounts of vegetal (tomato peels and seeds, and grape pomaces, seeds, and stalks) and
68 animal (cow's milk whey and *ricotta* whey) **by-products**. **Since** these huge amounts of
69 seasonal crops are concentrated **in most cases** in the very short harvesting time, they are one
70 of the major challenges to be faced.

1
2
3 71 In recent times, other types of **by-products** have been causing a lot of concern. In particular,
4
5 72 brewery **by-products** from the thriving of craft breweries; bread dough and pre-cooked and
6
7 73 other semi-finished bakery products which are distributed at shopping centers where the last
8
9 74 cooking phase is carried out; spent coffee grounds from vending machines; and animal
10
11 75 carcasses from fish and butcher's shops.

12
13
14 76 Currently, these **by-products** are only partially utilized as animal feed, for composting, or
15
16 77 biogas production. An investigation into alternative uses of these **by-products** is becoming
17
18 78 urgent and it ranges from the extraction of high-value compounds, such as lipids for
19
20 79 biodiesel, or polyphenols for their antioxidant activity, or other substances of high nutritional
21
22 80 value before choosing to use **by-products** as a substrate for biogas production.⁷⁻¹³ Finally,
23
24 81 spent coffee ground and brewery **by-products** are conveniently utilized for the cultivation of
25
26 82 edible mushrooms.^{14,15}

27
28
29 83 A very interesting solution to the problem is the bioconversion of **by-products** into valuable
30
31 84 organic fractions, such as proteins, fat, and chitin carried out by scavenger insects, such as the
32
33 85 'black soldier fly' (BSF) *Hermetia illucens* (Linnaeus, 1758) (Diptera, Stratiomyidae). In the
34
35 86 last few years, this species has been used in different studies for waste bioconversion.¹⁶
36
37 87 Indeed, BSF larvae are extremely voracious as well as highly suitable to being fed different
38
39 88 organic wet substrates (with a wide range of pH and moisture), including **by-products**
40
41 89 originating from the food industry, agricultural and livestock processes, municipal garden
42
43 90 waste and household food scraps.¹⁷⁻²⁵

44
45
46 91 **The content and the profile of BSF biomass, as well as the performance of larval growth, can**
47
48 92 **vary to some extent depending on the different rearing substrates. In particular, the lipid**
49
50 93 **profile is largely affected by the larval stage and the chemical composition of the rearing**
51
52 94 **substrates.**^{2,26,27} **According to the type and content of the main constituents, various**
53
54 95 **applications of whole larvae can be hypothesized. However, the limitations imposed by the**
55
56
57
58
59
60

1
2
3 96 EU legislation about origin and kind of bio-waste authorized for insect rearing is fostering
4
5 97 research into larvae processing in order to isolate and purify their main constituents. For these
6
7 98 reasons, the present study aims at assessing the lipid content and fatty acids composition of
8
9 99 BSF prepupae reared on different food by-products to outline its prospective applications.
10
11
12

100

101 **EXPERIMENTAL**

102 **Laboratory colony**

103 The BSF larvae used for all the experiments came from the mother colony which is kept in
104 the laboratory of Applied Entomology, Technopole of Reggio Emilia (Italy) that has in turn
105 been established from prepupae collected in composters located in the provinces of Modena
106 and Cuneo (Northern Italy). Both larvae and adults were kept in climatic chambers under
107 controlled conditions at 27 ± 0.5 °C, 60-70% relative humidity and 16:8 h light:dark
108 photoperiod.

109 About 400-500 larvae for each glass container ($21 \times 13 \times 8$ cm, L×W×H) were reared on
110 “Gainesville House Fly” diet (50% wheat bran, 30% alfalfa meal and 20% cornmeal) mixed
111 with 60% water.^{18,28,29} The larvae were fed with fresh substrate three times per week. After
112 reaching the prepupal stage, the individuals were manually collected and placed into
113 cylindrical containers for emergence. Subsequently, the newly emerged flies were transferred
114 into cages (BugDorm-4 Insect Rearing Cage, $32.5 \times 32.5 \times 32.5$ cm, L×W×H, NHBS Ltd,
115 Totnes, UK). The adults were provided with a small plastic cap filled with cotton soaked with
116 sucrose. As oviposition site, a patented 3D-printed device,³⁰ developed in our laboratory, was
117 used. The eggs were manually collected three times per week and placed directly on the
118 rearing substrate, inside the glass containers described above.

119

120 **Collection of substrates**

1
2
3 121 The alfalfa meal used in the control diet came from a pet store, while the wheat bran and the
4
5 122 cornmeal were sourced at a local grocery store. The substrates tested in the experiments were
6
7 123 collected from local companies and grouped into two categories: (i) industrial **by-products**,
8
9 124 and (ii) **by-products** from retailers. The former consisted in brewery spent grains obtained
10
11 125 from a local craft brewery Modena, Emilia-Romagna, Italy; cow's milk whey collected from
12
13 126 the consortium of Parmigiano-Reggiano cheese (Reggio Emilia, Emilia-Romagna, Italy);
14
15 127 grape stalks (*Vitis vinifera*) obtained from a local winery (Reggio Emilia, Emilia-Romagna,
16
17 128 Italy); tomato peels and seeds (*Solanum lycopersicum*) collected from local companies
18
19 129 (Reggio Emilia and Parma, Emilia-Romagna, Italy).
20
21
22
23
24 130 The latter consisted of bread dough, prepared by mixing and kneading 250 g of wheat flour
25
26 131 (*Triticum aestivum*), 150 g of water, 0.5 g of brewer's yeast, 5 g of olive oil, and 5 g of
27
28 132 sodium chloride; **fish scraps of European bass (*Dicentrarchus labrax*), including heads, fins,**
29
30 133 **fishbones, and offal**, which came from a local fish shop (Reggio Emilia, Emilia-Romagna,
31
32 134 Italy) and were later cut into small pieces; spent coffee ground (*Coffea* spp.) which was
33
34 135 collected from a local vending company (Reggio Emilia, Emilia-Romagna, Italy).
35
36
37 136 All substrates were stored at -20 °C to avoid external contamination (microorganisms, mites,
38
39 137 and insects) before their use.
40
41
42
43

44 139 **Chemicals**

45
46
47 140 All the reagents and solvents were of AR grade and were purchased from authorized
48
49 141 suppliers. Butylated hydroxyanisole (BHA), chloroform, hexane, hydrochloric acid,
50
51 142 methanol, potassium hydroxide (KOH), sodium chloride (NaCl), and anhydrous sodium
52
53 143 sulfate (an. Na₂SO₄) were purchased from WVR Srl (Milan, Italy). Pure standard fatty acids
54
55 144 (FAs) were purchased from Carlo Erba (Milan, Italy). Saline solution was prepared at a
56
57 145 12.5 g kg⁻¹ (w/v) of NaCl in deionized water. Undecanoic acid methyl ester, used as internal
58
59
60

1
2
3 146 standard, was purchased from Fluka (Milan, Italy) and prepared at 10 g kg⁻¹ concentration
4
5 147 (w/v) in chloroform-methanol 2:1. Deionized water was obtained through an Elix 3^{UV}
6
7
8 148 purification system (Merck-Millipore, Milan, Italy).
9

10 149

12 150 **Experimental trials**

14 151 The experimental substrates were administered at the beginning of the experiment (200 g)
15
16
17 152 and were placed into glass containers together with 100 BSF larvae (5-7 days old), for each
18
19 153 replicate. Unlike all other substrates, cow's milk whey was prepared by mixing the
20
21 154 "Gainesville House Fly" dry diet with 60% cow's milk whey.

23
24 155 For each substrate, including the standard diet considered as a control, three replicates were
25
26 156 performed inside climatic chambers under the same conditions described for laboratory
27
28 157 colony, and the entomological checks were performed 3 times per week until the larvae
29
30 158 reached the prepupal stage and were ready to be manually collected. Afterward, prepupae
31
32 159 were gently washed with tap water to remove any residue of the substrate, dried with
33
34 160 absorbent paper, counted and weighed. Finally, prepupae were killed by freezing at -20 °C
35
36 161 and stored until analysis could be carried out.³¹
37
38
39

40 162

42 163 **Fat extraction and determination of total lipid content**

44 164 Fat extraction was performed through the Folch method³² as adjusted and described in detail
45
46 165 by Montevecchi et al. (2019) on previously frozen prepupae.³³

48
49 166 The total lipid content was weighed with an analytical scale (AX224, Sartorius AG,
50
51 167 Goettingen, Germany) and expressed as $g_{fat} Kg^{-1}_{prepupae}$ fresh weight. Each sample was
52
53 168 analyzed rigorously following the same procedure.
54
55

56 169

1
2
3 170 **Free and bound fatty acids acid-catalyzed esterification and transesterification**
4
5 171 **procedure, gas chromatography-mass spectrometry peak identification, and gas**
6
7
8 172 **chromatographic profile of fatty acids.**

9
10 173 On each sample, free and bound fatty acids (FA) determination was carried out using the
11
12 174 method described by Christie.³⁴ In a glass tube, the prepupal fat was weighed (100 mg) and
13
14 175 1 mL of hydrochloric acid in methanol (50 mL L⁻¹) was added. The tube was sealed and
15
16
17 176 placed at a temperature of 100 °C for 1 h in order to derivatize FA into fatty acids methyl
18
19 177 esters (FAME). Afterward, the tube was cooled down and 500 µL of hexane and 500 µL of
20
21 178 deionized water were added. The mixture was centrifuged at 1752.4 g for 5 min to facilitate
22
23 179 the separation of the organic upper phase.

24
25
26 180 The FAME fraction (1 µL) of three samples (control) was withdrawn from the upper phase of
27
28 181 the tube and injected into a gas chromatograph (GC) HP 6890 series instrument (Hewlett-
29
30 182 Packard, Waldbronn, Germany) coupled with a mass spectrometer (MS) detector (HP 5973,
31
32 183 Hewlett-Packard Waldbronn, Germany), equipped with a capillary column (Mega-10, 100%
33
34 184 cyanopropyl polysiloxane, Mega snc, Legnano, MI, Italy) 50 m, having an internal diameter
35
36 185 of 0.25 mm and film thickness of 0.20 µm.

37
38
39 186 The injection was performed through a split/splitless injection port in split mode at 245 °C
40
41 187 (split ratio 50:1). The carrier gas was ultrapure helium (with a constant flow rate of 1.5 mL
42
43 188 min⁻¹). The temperature of the GC oven was set at 110 °C, held for 1 min and then increased
44
45 189 at 10 °C min⁻¹ up to 230 °C and finally held for 2 min (15 min in total). The molecular
46
47 190 fragmentation was obtained by electron ionization (EI). The data were obtained in full-scan
48
49 191 mode and the mass to charge ratio (m/z) was recorded between 33 and 400 at 70 eV.

50
51
52 192 GC-MS was used for identification only. Peaks were identified by comparing retention times
53
54 193 and mass spectra of pure standards and by comparing the mass spectra with those present in

1
2
3 194 the data system library dedicated to FAs (Famedb23.1 and Famedbwax.1; Agilent
4
5 195 Technologies).

6
7
8 196 The FAME fraction (1 μ L) of each sample was injected in a gas chromatograph (Focus,
9
10 197 Thermo Fisher Scientific, Rodano, MI, Italy), equipped with a split/splitless injector and FID
11
12 198 detector to determine the individual FAs. The chromatograms were acquired in the same
13
14 199 conditions described for GC-MS using the Chrom-Card software (Thermo Fischer Scientific,
15
16 200 Rodano, MI, Italy). The peaks were identified by comparing the retention times of the
17
18 201 analytes with those of the pure standards. Quantification was performed using the external
19
20 202 standard method in the presence of an internal standard. Each sample was analyzed
21
22 203 rigorously following the same procedure.
23
24
25

26 204

27 28 205 **Statistical analysis**

29
30 206 Univariate and multivariate analyses were carried out on the data set. Differences among the
31
32 207 lipid composition of the prepupae reared on the different substrates were assessed by analysis
33
34 208 of variance (one-way ANOVA) based on two or three replicates for each sample. When a
35
36 209 significant effect (at least $p < 0.05$) was detected, comparative analyses were carried out
37
38 210 using the post hoc Tukey's multiple comparison test. Principal component analysis (PCA) of
39
40 211 the autoscaled values was also carried out. All statistical tests were performed using Statistica
41
42 212 version 8.0 software (Stat Soft Inc., Tulsa, OK, USA).
43
44
45

46 213

47 48 49 214 **RESULTS**

50 51 215 **Prepupal growth performance**

52
53 216 Parameters of prepupal growth performance obtained with the different substrates are shown
54
55 217 in table 1. On the spent coffee ground, no larval growth was recorded and all larvae died
56
57 218 within 15 days. Poor growth was also observed on grape stalks, bread dough, and fish scraps,
58
59
60

219 where BSF survival was lower than 34% of the initial population. Development-time
220 parameters were used to observe the achievement of the prepupal stage for both 50% and
221 95% of the living specimens. Only the BSF larvae grown on brewery **by-products**, cow's
222 milk whey, and tomato peels and seeds, along with those grown on the control substrate,
223 reached at least 50% of living specimens throughout the experiments. BSF larvae fed with
224 cow's milk whey showed the significantly shortest time of growth ($p \leq 0.001$), followed by
225 those fed with tomato peels and seeds. The percentage of living prepupae at the end of the
226 experiment was similar for these substrates.

227 The mean weight per prepupa varied significantly according to the rearing substrate
228 ($p \leq 0.001$). When BSF larvae were fed on grape stalks, bread dough, and fish scraps, the
229 prepupal mean weight showed the lowest values, whereas the highest weights were detected
230 when fed on the control diet and cow's milk whey, followed by brewery **by-products** and
231 tomato **by-products**. Finally, the biomass yield was calculated using the following formula:

$$\text{Biomass yield} = \frac{\text{PLP} \times \text{MWP}}{\text{T}}$$

233 where PLP is the percentage of living prepupae at the end of the experiment (%); MWP is
234 mean weight per prepupa; T is the time to achieve 95% of living prepupae.

235 The biomass yield varied significantly among the BSF reared on the different substrates
236 ($p \leq 0.001$). Highest yield values were obtained with cow's milk whey, while brewery **by-**
237 **products**, tomato peels and seeds, and the control diet constituted a single statistical group
238 (around two-third of whey).

239

240 **Total lipid content**

241 The total lipid contents are reported in table 2. The one-way ANOVA showed statistically
242 significant differences among the BSF reared on the different substrates ($p \leq 0.001$).
243 Prepupae fed on brewery **by-products**, bread dough, and control diet had the highest lipid

244 content (around 130 g kg⁻¹ fresh weight), whereas those grown with grape stalks showed the
245 lowest lipid content (about three times lower than the other diets). All the other samples had
246 total lipid content around 110 g kg⁻¹ of fresh weight.

247 The mean lipid content per prepupa was calculated using the total lipid content and the mean
248 weight per prepupa. Successively, the mean lipid content per prepupa was used to calculate
249 the lipid yield, using the following formula:

$$250 \quad \text{Lipid yield} = \frac{\text{PLP} \times \text{MLC}}{\text{T}}$$

251 where PLP is the percentage of living prepupae at the end of the experiment (%); MLC is
252 mean lipid content per prepupa; T is the time to achieve 95% of living prepupae.

253 The lipid yield varied significantly among BSF larvae reared on the different substrates
254 ($p \leq 0.001$). BSF grown in presence of cow's milk whey showed the highest lipid yield
255 values, followed by those fed on brewery by-products and control diet.

257 **Lipid profile**

258 The results of the analysis of the lipid profile are shown in table 3. The whole data set was
259 subjected to one-way ANOVA. Statistical differences were found for each FA, as well as for
260 the other indexes considered, with $p \leq 0.001$, except C_{10:0} that showed a $p \leq 0.01$.

261 Prepupae reared on cow's milk whey and the control showed a 1:3 unsaturated fatty acid sum
262 to saturated fatty acids sum ratio (UFAs/SFAs), while brewery by-products provided a
263 UFAs/SFAs around 1:2. Bread dough, grape stalks, and tomato peels and seeds showed
264 UFAs/SFAs higher than 1.

265 The comparison of the results obtained showed good accordance with some recent studies.
266 C_{12:0} was often the most abundant FA with content higher than 500 mg g⁻¹ prepupal fat in
267 BSF reared on the cow's milk whey, as well as in the control. This peculiar C_{12:0}
268 concentration has been already plentifully reported in the literature.^{2,35,36} The concentrations

of C_{14:0} were positively correlated with those of C_{12:0} ($r = 0.90$; $p < 0.001$), while C_{16:0} was negatively correlated with C_{12:0} ($r = -0.57$; $p < 0.05$). Similar behavior was described by Meneguz and coll.² In addition, C_{12:0} was negatively correlated with C_{18:0} ($r = -0.66$; $p < 0.05$), C_{18:1} ($r = -0.67$; $p < 0.01$), C_{18:2} ($r = -0.80$; $p < 0.001$), and C_{18:3} ($r = -0.57$; $p < 0.05$). Good accordance was observed with the results described by Meneguz and coll. on the brewery **by-products**, with a high increase of the PUFA fraction.²

Principal component analysis

A principal component analysis (PCA) was carried out on the autoscaled values to explore the parameters with figures for all the samples and to evaluate the relationship among the variables and the overall distribution of the samples on the score plot. The first three principal components (PCs), all with eigenvalues > 1.0 , explained 94.72% of the total variance. All factors with eigenvalues < 1.0 were discarded according to Kaiser's criterion.³⁷

The main SFA (C_{12:0}), along with C_{14:0}, SFA sum, and total lipid content weighed on PC1 (60.76% of the total variance) with a negative sign (Fig. 1A) and were grouped together, thus showing a high positive correlation among them. The mean weight and the percentage of living prepupae at the end of the experiment were characterized by a high negative weight on the PC1, as well as a rather negative value also on the PC2. PUFA (C_{18:2} and C_{18:3}), as well as UFA sum, UFAs/SFAs, and two saturated FAs (C_{16:0} and C_{18:0}) weighed on the PC1 with positive sign, and finally the main MUFA (C_{16:1} and C_{18:1}), along with their sum, mainly weighed on the PC2 (20.47% of the total variance). A negative correlation was observed between each of the parameters related to SFA, notably C_{12:0}, SFA sum, and total lipid content and each of the parameters related to UFA, notably UFA sum and UFAs/SFAs. A less obvious negative correlation was highlighted between parameters related to MUFA, notably MUFA sum and C_{18:1}, and the percentage of living prepupae at the end of the

294 experiment. PC3 (13.48% of the total variance) was characterized by $C_{10:0}$ with a negative
295 sign on this PC (Fig. 1B).

296 The cow's milk whey lay close to the control in the center-left part of the score plot (Fig.
297 2A), due to their high concentrations of $C_{12:0}$, $C_{14:0}$, SFA sum, and total lipid content.
298 Brewery **by-products** diverged along the PC2 for the high values of mean weight and
299 percentage of living prepupae at the end of the experiment. The grape stalks treatment was
300 located in the opposite part of the plot due to its high UFA content. Fish scraps and bread
301 dough were set in the positive quadrant of the PC1, along the PC2 and were mainly
302 characterized by a high concentration of MUFA, while tomato peels and seeds were isolated
303 in the negative quadrant of the PC1 for their high concentrations of $C_{18:2}$ and PUFA sum.

304

305 DISCUSSION AND CONCLUSIONS

306 **Prepupal growth performance**

307 BSF larval development followed different trends according to the composition of each
308 substrate. As for substrates of the first category (industrial **by-products**), the best larval
309 performance in terms of shorter development time was recorded using cow's milk whey
310 (instead of water in the control diet) and tomato peels and seeds. Indeed, cow's milk whey
311 contains a wide range of nutrients, such as lactose, lactic acid, proteins, fats, and mineral
312 salts, which are crucial for faster larval development. Although this by-product of the dairy
313 industry is normally used to make another dairy product, *ricotta* cheese, the present study
314 showed that it might find a possible convenient use to reduce growth times of larvae in a BSF
315 industrial farming system when combined with an appropriate solid standard diet.

316 In the presence of tomato peels and seeds, the larval growth was faster than in the control diet
317 or brewery **by-products**. Moreover, faster growth (95% prepupal achievement in less than 24
318 days) was observed, although the final mean weight per prepupa was lower than in the

1
2
3 319 experiments that used other vegetables or fruits as growth substrates.^{38,39} Tomato peels are
4
5 320 mainly composed of polysaccharides, such as pectin, cellulose, and hemicellulose.
6
7 321 Furthermore, they also contain bioactive compounds, such as flavonoids, lycopene, and
8
9 322 ascorbic acid, which are associated with a high antioxidant activity.⁴⁰

10
11
12 323 Tomato peels were reduced by BSF larvae to extremely thin pale-orange sheets, thus showing
13
14 324 that larvae are able to eat up the residual pulp and to let the outer membrane rather intact.
15
16 325 Furthermore, this suggests that the larvae were able to rapidly grow using all the nutrients
17
18 326 available and were not negatively affected by the presence of polyphenols. However, specific
19
20 327 studies should focus on the effect of these compounds on BSF larval performance.

21
22
23 328 Tomato seeds contain essential amino acids, minerals (iron, magnesium, zinc, and copper),
24
25 329 and fatty acids, notably oleic acid.⁴¹ However, the seeds were not intentionally crushed before
26
27 330 use. As a consequence, it was observed that the seeds were left intact, thus suggesting that
28
29 331 larvae were not able to perforate the outer tegument and gain access to inner nutrients.

30
31
32 332 Brewer spent grains are the most abundant **by-products** generated from the brewing process.
33
34 333 They represent the insoluble part of the barley grains that are still rich in proteins (20-30%),
35
36 334 fibers (30-50%), lipids (4-10%), and ash (3.5-4.5%).⁴² The main components of the fibers are
37
38 335 arabinoxylans and cellulose.⁴³ This kind of substrate did not provide development
39
40 336 performance as fast as that obtained with milk whey and tomato. However, they are
41
42 337 particularly rich in proteins and, as a matter of fact, the percentage of living prepupae at the
43
44 338 end of the experiment was close to 100%. The mean weight per prepupa, as well as its mean
45
46 339 lipid content, presented the highest values, thus showing that this substrate provided a
47
48 340 balanced nutrient composition for BSF larval growth.

49
50
51 341 In the present study, BSF prepupae reared on brewers' spent grains after 18 days reached an
52
53 342 average weight of 0.22 g. These data are consistent with those reported by Meneguz and
54
55 343 coll.² who found a maximum larval weight of 0.12 g, after 8 days.

1
2
3 344 Grape stalks effectively proved to be one of the most inadequate substrates as they are almost
4
5 345 devoid of nutrients. They are indeed composed of fibers, such as cellulose (36%), lignin
6
7 346 (34%), and hemicellulose (24%).⁴⁴ The rest is represented by polyphenols and salts, and other
8
9
10 347 minor, worthless substances. BSF prepupae reached an average weight of 0.04 g, after 37
11
12 348 days. Meneguz and coll. recorded a maximum larval weight of 0.15 g, after 26 days.²⁵ This
13
14 349 apparent inconsistency in growth performance with said study is very likely due to the
15
16 350 different composition of the substrate. Indeed, Meneguz and coll. used whole winery by-
17
18 351 products, including grape seeds, pulp, peels, stalks, and leaves. Grape peels are similar to
19
20 352 tomato peels, which gave good results. For this reason, Meneguz and coll.'s results are not
21
22 353 comparable with the sole stalks used in the present study.²

23
24
25
26 354 Among the substrates belonging to the second category (retailer by-products), spent coffee
27
28 355 ground showed that it was not fit for purpose at all since all larvae died within 15 days. The
29
30 356 high content of indigestible fibers and toxic alkaloids, mainly caffeine, as well as the products
31
32 357 of Maillard reaction that brings about the permanent modification of sugars and proteins,
33
34 358 were probably the causes that made this substrate totally unfavorable to BSF larval growth.⁴⁵

35
36
37 359 Larvae reared on fish scraps and bread dough showed low growth performance in terms of
38
39 360 mean weight and prepupal survival. Fish scraps have a very high content of proteins and
40
41 361 polyunsaturated fatty acids but they are poor in carbohydrates and probably this is the reason
42
43 362 for the poor performance. Likewise, Nguyen and coll. (2013)⁴⁶ reported that a fish offal
44
45 363 protein-carbohydrate percentage of 90.9:1.0 was associated with a poor survival percentage
46
47 364 of 47%. On the contrary, a protein-carbohydrate balanced diet (21:21 as a percentage in
48
49 365 weight in the diet)²⁰ led to faster development rate and higher larval survival. A protein-
50
51 366 carbohydrate percentage in weight in the diet of 35:7 led to a development time of around 45
52
53
54 367 days, with a survival percentage of 46%. These authors confirmed the importance of an
55
56 368 adequate moisture rate in the substrate, being 70% of relative humidity the best condition for
57
58
59
60

1
2
3 369 growth performance. In general, an unbalanced diet and fast dehydration of fish scraps may
4
5 370 probably be an unfavorable environment for BSF larval development.

6
7
8 371 As for bread dough, the larval growth was mainly hindered by the texture of the substrate. In
9
10 372 fact, the dough outer layer quickly dried up thus forming a thick hard surface, whereas the
11
12 373 internal core had a very sticky texture that firmly trapped most of the larvae constraining their
13
14 374 movements and, as a consequence, they died.

15
16
17 375

18 19 376 **Total lipid content and lipid profile**

20
21 377 The lipid content of insects, as well as its composition and FA profile, can vary with diet. In
22
23 378 fact, the lipid content and composition are strongly affected by the insect species and by
24
25 379 several other factors, such as the diet provided, habitat, temperature and moisture conditions,
26
27 380 metamorphic stage.⁴⁷ The modulation of the factors allows to target lipid amount and quality
28
29 381 according to the planned fat application.

30
31
32
33 382 In a recent study, Caligiani and coll.³⁵ have found in BSF larvae a crude lipid content of
34
35 383 **371 g kg⁻¹** (dry matter basis) that once converted into a fresh matter basis (**340 g kg⁻¹** dry
36
37 384 matter) was **126 g kg⁻¹** fresh weight. This value is in perfect accordance with the fat content
38
39 385 found in the present study using brewery **by-products**, as well as the control treatment.
40
41 386 However, all other substrates with the exception of grape stalks yielded a fat content higher
42
43 387 than **110 g kg⁻¹** (fresh matter basis). A content of fat around **40 g kg⁻¹** was found in the
44
45 388 literature for BSF larvae reared on grape stalks.³⁸ In the present study, the fat yield shown by
46
47 389 BSF prepupae grown on grape stalks was consistent to the unsatisfactory growth performance
48
49 390 associated to this substrate and it is likely caused by the deficiency of crucial nutrients.

50
51
52
53 391 In general, the range of BSF larval lipid content reported in the literature ranges from **50 to**
54
55 392 **130 g kg⁻¹** (fresh matter basis), thus representing a good source of energy.^{48,49} **Moreover, the**
56
57 393 **low cholesterol content, similar structure and functionality as butter, and a sensory**

1
2
3 394 acceptance up to 25% replacing of butter, makes this fat suitable for the food industry.⁵⁰

4
5 395 However, due to the hindrances imposed by the current legislation, the use of insect fat as a
6
7 396 biofuel is one the most profitable alternative to reduce the consumption of fossil fuels.

8
9 397 Biodiesel is chemically obtained by reacting lipids with short-chain alcohols (methanol,
10
11 398 ethanol, propanol), thus providing individual esters of fatty acid. Biodiesel has good
12
13 399 lubricating properties and higher cetane ratings in comparison to the common low-sulfur
14
15 400 diesel fuels.⁵¹ In the literature, a cetane number (CN) as high as 64.8 has been reported for
16
17 401 BSF fat. This value has also been associated with a fatty acid profile adequate for biodiesel
18
19 402 production.⁵² In the present study, cetane numbers for the different samples were obtained
20
21 403 (table 3) in accordance with Freedman and Bagby (1990).⁵¹ Fat obtained using cow's milk
22
23 404 whey achieved the highest CN figure (60), as did the control, while tomato peels and seeds
24
25 405 provided the lowest value⁵².

26
27 406 Aside from its interesting properties as a fuel, biodiesel also shows other crucial
28
29 407 characteristics, which make it more efficient than standard diesel. In particular, it allows to
30
31 408 reduce the production and release of environmental contaminants, such as carbon monoxide,
32
33 409 heavy metals, sulfur oxides, aliphatic and aromatic hydrocarbons, as well as fine particulate
34
35 410 matter.^{53,54} Furthermore, the energy balance of the life cycle shows an extremely positive
36
37 411 result with an energy consumption of about a quarter compared to the energy produced. Since
38
39 412 it derives from renewable vegetable crops and animal products, it implies the zeroing of the
40
41 413 CO₂ cycle when biodiesel is burned. No additional CO₂ is emitted because the carbon dioxide
42
43 414 in output has already been compensated by that which the plants fixed during their growth.
44
45 415 The only source of carbon dioxide in surplus could be provided by the alcohols used in the
46
47 416 transesterification process, unless they have a bio-origin, as well. Finally, biodiesel has a
48
49 417 lower environmental impact. Its toxicity is lower than its fossil equivalents. In fact, biodiesel
50
51 418 degrades completely in 21 days, but even after 2 days in contact with the air, the esters of the
52
53
54
55
56
57
58
59
60

1
2
3 419 fatty acids are no longer detectable. Many microorganisms, can use biodiesel as a source of
4
5 420 carbon, thus limiting the problems arising from accidental or chronic fuel losses.⁵⁵⁻⁵⁹

6
7
8 421 As already described, FA profile is significantly affected by the rearing substrate (table 3)
9
10 422 and these data are confirmed by literature.⁴⁸ As a consequence, a targeted diet can give rise to
11
12 423 different types of fat characterized by an optimal composition for a specific purpose: e.g.
13
14 424 either production of biodiesel or high PUFA oil for food and feed. On the other hand, a
15
16 425 complete diet gives rise to a sort of “standard fat”, as does a rearing substrate composed of
17
18 426 HO.RE.CA. by-products, in which carbohydrates, lipids, and proteins from different food
19
20 427 sources are supplied in large quantities. At the moment, the first results not yet published
21
22 428 using HO.RE.CA. by-products are very promising in terms of fat yield and quality.
23
24 429 Moreover, it remains to be assessed what percentage of fat the larvae can tolerate in the
25
26 430 substrate.

27
28
29
30 431 Returning to the present study, the possibility of affecting and modulating the FA
31
32 432 composition was strongly confirmed. Noteworthy differences were found out in the ratio
33
34 433 between unsaturated (UFAs) and saturated (SFAs) FA sums, thus outlining peculiar profiles
35
36 434 for each rearing substrate. Brewery by-products provided a higher concentration of UFAs in
37
38 435 comparison with cow’s milk whey, likely due to higher polyunsaturated fatty acids (PUFA)
39
40 436 content. The UFAs/SFAs increased in fish scraps, mainly because of the higher concentration
41
42 437 of the monounsaturated fatty acids (MUFA) content. The bread dough was characterized by
43
44 438 the highest MUFA content (around 340 mg g⁻¹ prepupal fat). Finally, tomato peels and seeds
45
46 439 and grape stalks (despite their nutritional shortage), both showed UFAs/SFAs higher than 1,
47
48 440 as well as the highest PUFA content (around 390 mg g⁻¹ prepupal fat) along with the lowest
49
50 441 C_{12:0} concentration.

51
52
53
54 442 The cow’s milk whey showed the best performance in terms of larval growth. However, to be
55
56 443 considered suitable as a substrate, this by-product needs to be absorbed on a solid support
57
58
59
60

1
2
3 444 which in the present study was represented by the control diet. Also, in light of the results, the
4
5 445 control diet could be effectively replaced by tomato peels and seeds. These latter gave rise to
6
7 446 prepupae with a prevalence of unsaturated fatty acids, even though larvae were not able to
8
9 447 crush tomato seeds and effectively exploit the substances contained. Follow-up studies
10
11 448 should, therefore, consider a preliminary grinding step to help release tomato-seed inner
12
13 449 nutrients into the substrate. For all these reasons, the use of ground tomato peels and seeds as
14
15 450 solid support for cow's milk whey, and in the same way for *ricotta* whey, may represent an
16
17 451 advantageous combination of substrates for BSF rearing, which is worth ascertaining.
18
19
20
21
22 452

23 453 **ACKNOWLEDGEMENTS**

24
25
26 454 The authors wish to thank Dr. Sara Ronconi (English-language reviewers) for her valuable
27
28 455 contribution to the drafting of the present article. This research project entitled: "Study for the
29
30 456 valorization of organic waste through insects to obtain biomaterials for agriculture" was
31
32 457 funded with the "Fondo di Ateneo per la Ricerca 2015" – University of Modena and Reggio
33
34 458 Emilia (FAR 2015, CUP: E52F16001300005; *Studio per la valorizzazione di rifiuti organici*
35
36 459 *mediante insetti per l'ottenimento di biomateriali per l'agricoltura*).
37
38
39
40 460

41 42 461 **Conflict of Interest Statement**

43
44 462 The authors declare that there is no conflict of interest regarding the publication of this
45
46 463 article.
47
48
49
50
51
52
53
54
55
56
57
58
59
60

1
2
3 465 **Figure captions**
4

5
6 466

7
8 467 **Figure 1.** (A) PC1 vs PC2 and (B) PC1 vs PC3 loading plots of main parameters related to
9
10 468 the analyses of substrates used for black soldier fly growth with the explained variance (%).
11
12 469 MW: mean lipid content per prepupa; PLP: percentage of living prepupae at the end of the
13
14 470 experiment; MUFA, monounsaturated fatty acids; PUFA, polyunsaturated fatty acids; SS,
15
16 471 saturated fatty acids; TFC, total fat content; US, unsaturated fatty acids; U/S, unsaturated
17
18 472 fatty acid sum to saturated fatty acids sum ratio.
19
20

21 473

22
23
24 474 **Figure 2.** (A) PC1 vs PC2 and (B) PC1 vs PC3 score plots of substrates used for black
25
26 475 soldier fly growth with the explained variance (%).
27
28
29
30
31
32
33
34
35
36
37
38
39
40
41
42
43
44
45
46
47
48
49
50
51
52
53
54
55
56
57
58
59
60

477 **REFERENCES**

- 478 1 Spranghers T, Ottoboni M, Klootwijk C, Owyn A, Deboosere S, Meulenaer BD, et al.,
479 Nutritional composition of black soldier fly (*Hermetia illucens*) prepupae reared on different
480 organic waste substrates. *J Sci Food Agric* **97**:2594–2600 (2017).
- 481 2 Meneguz M, Schiavone A, Gai F, Dama A, Lussiana C, Renna M, et al., Effect of rearing
482 substrate on growth performance, waste reduction efficiency and chemical composition of
483 black soldier fly (*Hermetia illucens*) larvae: Rearing substrate effects on performance and
484 nutritional composition of black soldier fly. *J Sci Food Agric* **98**:5776–5784 (2018).
- 485 3 Commission of the European Communities, Green paper on the management of bio-waste
486 in the European Union {sec(2008) 2936}. Brussels, 3.12.2008 com(2008) 811 final.
487 [https://www.europarl.europa.eu/meetdocs/2009_2014/documents/com/com_com\(2008\)0811_](https://www.europarl.europa.eu/meetdocs/2009_2014/documents/com/com_com(2008)0811_/com_com(2008)0811_en.pdf)
488 [/com_com\(2008\)0811_en.pdf](https://www.europarl.europa.eu/meetdocs/2009_2014/documents/com/com_com(2008)0811_/com_com(2008)0811_en.pdf)
- 489 4 G.U.R.I. 30 agosto 2016, n. 202, Law n. 166, Disposizioni concernenti la donazione e la
490 distribuzione di prodotti alimentari e farmaceutici a fini di solidarietà sociale e per la
491 limitazione degli sprechi. Aug 19, 2016.
492 <https://www.gazzettaufficiale.it/eli/id/2016/08/30/16G00179/sg>
- 493 5 Directive 2008/98/EC of the European Parliament and of the Council of 19 November 2008
494 on waste and repealing certain Directives OJ L 312, 22.11.2008, p. 3–30.
495 <http://data.europa.eu/eli/dir/2008/98/oj>
- 496 6 European Commission, Closing the loop – An EU action plan for the circular economy.
497 Communication from the Commission to the European Parliament, the Council, the European
498 Economic and Social Committee and the Committee of the Regions. Brussels, 2.12.2015
499 com(2015) 614 final.
500 <https://eur-lex.europa.eu/legal-content/EN/TXT/?uri=CELEX%3A52015DC0614>
- 501 7 Mussatto SI, Ballesteros LF, Martins S and Teixeira JA, Extraction of antioxidant phenolic

- 1
2
3 502 compounds from spent coffee grounds. *Sep Purif Technol* **83**:173–179 (2011).
4
5
6 503 8 Panusa A, Zuurro A, Lavecchia R, Marrosu G and Petrucci R, Recovery of natural
7
8 504 antioxidants from spent coffee grounds. *J Agric Food Chem* **61**:4162–4168 (2013).
9
10 505 9 Kondamudi N, Mohapatra SK and Misra M, Spent coffee grounds as a versatile source of
11
12 506 green energy. *J Agric Food Chem* **56**:11757–11760 (2008).
13
14
15 507 10 Mussatto SI, Brewer's spent grain: a valuable feedstock for industrial applications:
16
17 508 Brewer's spent grain and its potential applications. *J Sci Food Agric* **94**:1264–1275 (2014).
18
19 509 11 Čater M, Fanedl L, Malovrh Š and Marinšek Logar R, Biogas production from brewery
20
21 510 spent grain enhanced by bioaugmentation with hydrolytic anaerobic bacteria. *Bioresour*
22
23 511 *Technol* **186**:261–269 (2015).
24
25
26 512 12 Knoblich M, Anderson B and Latshaw D, Analyses of tomato peel and seed byproducts
27
28 513 and their use as a source of carotenoids. *J Sci Food Agric* **85**:1166–1170 (2005).
29
30
31 514 13 Machmudah S, Zakaria, Winardi S, Sasaki M, Goto M, Kusumoto N, et al., Lycopene
32
33 515 extraction from tomato peel by-product containing tomato seed using supercritical carbon
34
35 516 dioxide. *J Food Eng* **108**:290–296 (2012).
36
37
38 517 14 Leifa F, Pandey A and Soccol CR, Production of *Flammulina velutipes* on coffee husk and
39
40 518 coffee spent-ground. *Braz Arch Biol Technol* **44**:205–212 (2001).
41
42 519 15 Wang D, Sakoda A and Suzuki M, Biological efficiency and nutritional value of *Pleurotus*
43
44 520 *ostreatus* cultivated on spent beer grain. *Bioresour Techno* **78**:293–300 (2001).
45
46
47 521 16 Gold M, Tomberlin JK, Diener S, Zurbrügg C, Mathys A, Decomposition of biowaste
48
49 522 macronutrients, microbes, and chemicals in black soldier fly larval treatment: A review.
50
51 523 *Waste Manag* **82**:302–318 (2018).
52
53
54 524 17 Žáková M and Borkovcová M, *Hermetia illucens* application in management of selected
55
56 525 types of organic waste. In: Proceedings in *EIIC-The 2nd Electronic International*
57
58 526 *Interdisciplinary Conference* (No. 1). EDIS - Publishing Institution of the University of
59
60

- 1
2
3 527 Žilina [cited 2016 Nov 22]. p. 2–6 (2013). Available:
4
5 528 <http://www.eiic.cz/archive/?vid=1&aid=3&kid=20201-33&q=f1>
6
7
8 529 18 Sheppard DC, Tomberlin JK, Joyce JA, Kiser BC and Sumner SM, Rearing methods for
9
10 530 the black soldier fly (Diptera: Stratiomyidae). *J Med Entomol* **39**:695–698 (2002).
11
12 531 19 Diener S, Zurbrügg C, Gutiérrez FR, Nguyen DH, Morel A, Koottatep T, et al., Black
13
14 532 soldier fly larvae for organic waste treatment – prospects and constraints, pp.52–59. In:
15
16 533 Alamgir M, Bari QH, Rafizul IM, Islam SMT, Sarkar G and Howlader MK (eds.),
17
18 534 Proceedings of *WasteSafe 2011, 2nd International Conference on Solid Waste Management in*
19
20 535 *the Developing Countries*. 13-15 February 2011, Khulna, Bangladesh. Available:
21
22 536 https://www.eawag.ch/fileadmin/Domain1/Abteilungen/sandec/publikationen/SWM/BSF/Black_soldier_fly_larvae_for_organic_waste_treatment.pdf
23
24 537
25
26 538 20 Cammack J and Tomberlin J, The impact of diet protein and carbohydrate on select life-
27
28 539 history traits of the black soldier fly *Hermetia illucens* (L.) (Diptera: Stratiomyidae). *Insects*
29
30 540 **8**:56 (2017).
31
32 541 21 Ma J, Lei Y, ur Rehman K, Yu Z, Zhang J, Li W, et al., Dynamic effects of initial pH of
33
34 542 substrate on biological growth and metamorphosis of black soldier fly (Diptera:
35
36 543 Stratiomyidae). *Environ Entomol* **47**:159–165 (2018).
37
38 544 22 Meneguz M, Gasco L and Tomberlin JK, Impact of pH and feeding system on black
39
40 545 soldier fly (*Hermetia illucens*, L; Diptera: Stratiomyidae) larval development. *Plos One*
41
42 546 **13**:e0202591 (2018).
43
44 547 23 Newton L, Sheppard C, Watson DW, Burtle G and Dove R, *Using the black soldier fly,*
45
46 548 *Hermetia illucens, as a value-added tool for the management of swine manure*. Report for
47
48 549 Mike Williams, Director Animal and Poultry Waste Management Centre, North Carolina
49
50 550 State University, Raleigh, NC, USA. [Online]. Pollution Prevention Services InfoHouse
51
52 551 (2005). Available: <https://p2infohouse.org/ref/37/36122.pdf>
53
54
55
56
57
58
59
60

- 1
2
3 552 24 Lalander C, Diener S, Zurbrügg C and Vinnerås B, Effects of feedstock on larval
4
5 553 development and process efficiency in waste treatment with black soldier fly (*Hermetia*
6
7 554 *illucens*). *J Clean Prod* **208**:211–219 (2019).
- 8
9
10 555 25 Barbi S, Macavei L I, Fuso A, Luparelli A V, Caligiani A, Ferrari A M, Maistrello L,
11
12 556 Montorsi M. Valorization of seasonal agri-food leftovers through insects. *Science of the Total*
13
14 557 *Environment* **709**:136209 (2020). Available: <https://doi.org/10.1016/j.scitotenv.2019.136209>
- 15
16
17 558 26 Li Q, Zheng L, Qiu N, Cai H, Tomberlin JK and Yu Z, Bioconversion of dairy manure by
18
19 559 black soldier fly (Diptera: Stratiomyidae) for biodiesel and sugar production. *Waste Manag*
20
21 560 **31**:1316–1320 (2011).
- 22
23
24 561 27 Salomone R, Saija G, Mondello G, Giannetto A, Fasulo S and Savastano D,
25
26 562 Environmental impact of food waste bioconversion by insects: Application of Life Cycle
27
28 563 Assessment to process using *Hermetia illucens*. *J Clean Prod* **140**:890–905 (2017).
- 29
30
31 564 28 Hogsette JA, New diets for production of house flies and stable flies (diptera: muscidae) in
32
33 565 the laboratory. *J Econ Entomol* **85**:2291–2294 (1992).
- 34
35
36 566 29 Tomberlin JK, Sheppard DC and Joyce JA, Selected life-history traits of black soldier flies
37
38 567 (Diptera: Stratiomyidae) reared on three artificial diets. *Ann Entomol Soc Am* **95**:379–386
39
40 568 (2002).
- 41
42
43 569 30 Benassi M, Ferrari GA, Benassi G, Maistrello L, Macavei L, Bortolini S and Hadj
44
45 570 Saadoun J (2018). Dispositivo per la deposizione di uova di ditteri stratiomiidi e un apparato
46
47 571 per l'allevamento di ditteri stratiomiidi comprendente detto dispositivo. Presentation for
48
49 572 industrial invention patent, number: 102018000003261. Ministry of Economic Development
50
51 573 (Italy). Submission date: 05/03/2018.
- 52
53
54 574 31 St-Hilaire S, Cranfill K, McGuire MA, Mosley EE, Tomberlin JK, Newton L, et al., Fish
55
56 575 offal recycling by the black soldier fly produces a foodstuff high in omega-3 fatty acids. *J*
57
58 576 *World Aquac Soc* **38**:309–313 (2007).
- 59
60

- 1
2
3 577 32 Folch J, Lees M and Sloane Stanley GH, A simple method for the isolation and
4
5 578 purification of total lipides from animal tissue. *J Biol Chem* **226**:497–509 (1957).
6
7
8 579 33 Montevecchi G, Zanasi L, Masino F, Maistrello L and Antonelli A, Black soldier fly
9
10 580 (*Hermetia illucens* L.): effect on the fat integrity using different approaches to the killing of
11
12 581 the prepupae. *J Insects Food Feed* (accepted on 04 Aug 2019).
13
14 582 <https://doi.org/10.3920/JIFF2019.0002>.
15
16
17 583 34 Christie WW, *Lipid Analysis*, 2nd edn. Pergamon Books, Oxford, UK (1982).
18
19 584 35 Caligiani A, Marseglia A, Leni G, Baldassarre S, Maistrello L, Dossena A et al.,
20
21 585 Composition of black soldier fly prepupae and systematic approaches for extraction and
22
23 586 fractionation of proteins, lipids and chitin. *Food Res Int* **105**:812–820 (2018).
24
25
26 587 36 Guil-Guerrero JL, Ramos-Bueno RP, González-Fernández MJ, Fabrikov D,
27
28 588 Sánchez-Muros MJ and Barroso FG, Insects as food: fatty acid profiles, lipid classes, and
29
30 589 *sn*-2 fatty acid distribution of Lepidoptera larvae. *Europ J Lipid Sci Tech* **120**:1700391
31
32 590 (2018).
33
34
35 591 37 Kaiser HF, The varimax criterion for analytic rotation in factor analysis. *Psychometrika*
36
37 592 **23**:187–200 (1958).
38
39
40 593 38 Jucker C, Erba D, Leonardi MG, Lupi D and Savoldelli S, Assessment of vegetable and
41
42 594 fruit substrates as potential rearing media for *Hermetia illucens* (Diptera: Stratiomyidae)
43
44 595 larvae. *Environ Entomol* **46**:1415–1423 (2017).
45
46
47 596 39 Klammsteiner T, Walter A, Heussler C, Schlick-Steiner BC, Steiner FM and Insam H,
48
49 597 *Hermetia illucens* (Diptera: Stratiomyidae) larvae in waste valorization and diet-based shifts
50
51 598 in their gut microbiome. *Metabolism* **61**:1-3 (2018).
52
53
54 599 40 Ronga D, Francia E, Rizza F, Badeck, Caradonia F, Montevecchi et al., Changes in yield
55
56 600 components, morphological, physiological and fruit quality traits in processing tomato
57
58 601 cultivated in Italy since the 1930's. *Sci Hortic-Amsterdam* **257**:108726 (2019).
59
60

- 1
2
3 602 41 Stagno C, *Caratterizzazione dei sottoprodotti della filiera del pomodoro per un potenziale*
4
5 603 *sviluppo industriale*. [Online]. Università degli Studi di Ferrara. Eprints Unife (2010).
6
7 604 Available: <http://eprints.unife.it/206/>
8
9
10 605 42 Lynch KM, Steffen EJ and Arendt EK, Brewers' spent grain: a review with an emphasis
11
12 606 on food and health: Brewers' spent grain: a review with an emphasis on food and health. *J*
13
14 607 *Inst Brew* **122**:553–568 (2016).
15
16 608 43 Mussatto SI, Dragone G and Roberto IC, Brewers' spent grain: generation, characteristics
17
18 609 and potential applications. *J Cereal Sci* **43**:1–14 (2006).
19
20 610 44 Ping L, Brosse N, Sannigrahi P and Ragauskas A, Evaluation of grape stalks as a
21
22 611 bioresource. *Ind Crops Prod* **33**:200–204 (2011).
23
24 612 45 Martinez-Saez N, García AT, Pérez ID, Rebollo-Hernanz M, Mesías M, Morales FJ, et al.,
25
26 613 Use of spent coffee grounds as food ingredient in bakery products. *Food Chem* **216**:114–122
27
28 614 (2017).
29
30 615 46 Nguyen TTX, Tomberlin JK and Vanlaerhoven S, Influence of resources on *Hermetia*
31
32 616 *illucens* (Diptera: Stratiomyidae) larval development. *J Med Entomol* **50**:898–906 (2013).
33
34 617 47 Clarkson C, Birch J and Miroso M, Locusts as a source of lipids and proteins and
35
36 618 consumer acceptance. In *Encyclopedia of Food Chemistry*, ed. by Varelis P, Melton L and
37
38 619 Shahidi F. Elsevier Science Publishers, Amsterdam, Vol. 1, pp. 167–172 (2019).
39
40 620 48 Sánchez López A, *Potential of pre-pupae meal of the Black Soldier Fly (Hermetia*
41
42 621 *illucens) as fish meal substitute: effects on growth performance and digestibility in European*
43
44 622 *sea bass* (*Dicentrarchus labrax*). [Online]. Universitat Politècnica de València. Servicio de
45
46 623 Alumnado (2015). Available: <http://hdl.handle.net/10251/75359>
47
48 624 49 Cullere M, Tasoniero G, Giaccone V, Acuti G, Marangon A and Dalle Zotte A, Black
49
50 625 soldier fly as dietary protein source for broiler quails: meat proximate composition, fatty acid
51
52 626 and amino acid profile, oxidative status and sensory traits. *Animal* **12**:640–647 (2018).
53
54
55
56
57
58
59
60

- 1
2
3 627 50 Delicato C, Schouteten JJ, Dewettinck K, Gellynck X and Tzompa-Sosa DA, Consumers'
4
5 628 perception of bakery products with insect fat as partial butter replacement. *Food Qual Prefer*
6
7 629 **79**:103755 (2020).
8
9
10 630 51 Freedman B and Bagby MO, Predicting cetane numbers of n-alcohols and methyl esters
11
12 631 from their physical properties. *J Am Oil Chem Soc* **67**:565–571 (1990).
13
14 632 52 Ramos-Bueno RP, González-Fernández MJ, Sánchez-Muros-Lozano MJ, García-Barroso
15
16 633 F and Guil-Guerrero JL, Fatty acid profiles and cholesterol content of seven insect species
17
18 634 assessed by several extraction systems. *Eur Food Res Technol* **242**:1471–1477 (2016).
19
20 635 53 Demirbas A, Progress and recent trends in biodiesel fuels. *Energ Convers Manage* **50**:14–
21
22 636 34 (2009).
23
24 637 54 Grishin DF and Zinina ND, Environmentally friendly diesel fuels with low and ultralow
25
26 638 sulfur content and additives to them. *Russ J Appl Chem* **88**:1106–1121 (2015).
27
28 639 55 Allesina G, Pedrazzi S, Tebianian S, Muscio A and Tartarini P, Energy and economical
29
30 640 comparison of possible cultures for a total-integrated on-field biodiesel production. *Journal*
31
32 641 *of Physics: Conference Series* **501**:012034 IOP Publishing (2014).
33
34 642 56 Allesina G, Pedrazzi S, Tebianian S and Tartarini P, Biodiesel and electrical power
35
36 643 production through vegetable oil extraction and byproducts gasification: Modeling of the
37
38 644 system. *Bioresource Technol* **170**:278–285 (2014).
39
40 645 57 Virgilio R, *Biocarburanti fai-da-te*. Terra Nuova Edizioni, Firenze, Italy (2007).
41
42 646 58 Lai EPC, Biodiesel: environmental friendly alternative to petrodiesel. *J Pet Environ*
43
44 647 *Biotechnol* **5**:122 (2014).
45
46 648 59 Wang H, ur Rehman K, Liu X, Yang Q, Zheng L, Li W, Cai M, Li Q, Zhang J and Yu Z,
47
48 649 Insect biorefinery: a green approach for conversion of crop residues into biodiesel and
49
50 650 protein. *Biotechnol Biofuels* **10**:304 (2017).
51
52
53
54
55
56
57
58
59
60

651

652 **Table 1.** Parameters of prepupae growth performance using different substrates (values are means of three replicates \pm the standard deviation).

653

Substrate	Achievement of 50% living prepupae (day)	Achievement of 95% living prepupae (day; T)	Percentage of living prepupae at the end of the experiment (%; PLP)	Mean weight per prepupa (g; MWP)	Biomass yield PLP \times MWP/T (g _{biomass} per day)
ANOVA (F_{value})	499.7***	1017.4***	100.5***	121.8***	89.3***
Control	28 \pm 0 c	32 \pm 1 c	99 \pm 1 b	0.22 \pm 0.01 e	0.67 \pm 0.01 a
<i>SUBSTRATES</i>					
<i>GROUP A†</i>					
Brewery by-products	31 \pm 0 d	33 \pm 0 c	97 \pm 4 b	0.22 \pm 0.00 e	0.66 \pm 0.01 a
Cow's milk whey	17 \pm 0 a	18 \pm 1 a	100 \pm 0 b	0.19 \pm 0.02 d	1.0 \pm 0.2 b
Grape stalks	=	=	15 \pm 4 a	0.04 \pm 0.00 a	=
Tomato peels and seeds	20 \pm 2 b	24 \pm 1 b	100 \pm 0 b	0.14 \pm 0.00 c	0.59 \pm 0.04 a
<i>SUBSTRATES</i>					
<i>GROUP B‡</i>					
Bread dough	=	=	34 \pm 14 a	0.08 \pm 0.00 b	=
Fish scraps	=	=	21 \pm 11 a	0.10 \pm 0.01 b	=

654

655 Results of one-way ANOVA and Tukey's test are reported as F_{value} and letters (for statistically significant F_{value}), respectively. Different letters
656 identify samples that are significantly different ($P \leq 0.05$)657 ***: $P \leq 0.001$.658 †: industrial **by-products**; ‡: retailer **by-products**.

659 T: time to achieve 95% of living prepupae; PLP: percentage of living prepupae at the end of the experiment; MWP: mean weight per prepupa.

660 PLP \times MWP/T%P: biomass yield.

662 **Table 2.** Total lipid content. Values (g kg^{-1} prepupal fresh weight) are means of three repetitions \pm the standard deviation

663

Substrate	Total lipid content \pm S.D. (g kg^{-1} F.W.)	Mean lipid content per prepupa (g; MLC)	Lipid yield PLP \times MLC/T (g lipid per day)
ANOVA (F_{value})	183.5***	183.9***	201.9***
Control	128 \pm 11 cd	0.028 \pm 0.001 e	0.086 \pm 0.002 b
<i>SUBSTRATES GROUP A</i> †			
Brewery by-products	128 \pm 3 d	0.028 \pm 0.000 e	0.083 \pm 0.003 ab
Cow's milk whey	110 \pm 10 b	0.020 \pm 0.003 d	0.11 \pm 0.02 c
Grape stalks	43 \pm 2 a	0.002 \pm 0.000 a	=
Tomato peels and seeds	115 \pm 7 bc	0.016 \pm 0.000 c	0.067 \pm 0.002 a
<i>SUBSTRATES GROUP B</i> ‡			
Bread dough	132 \pm 1 d	0.010 \pm 0.001 b	=
Fish scraps	111 \pm 10 b	0.012 \pm 0.002 b	=

664

665 Results of one-way ANOVA and Tukey's test are reported as F_{value} and letters (for statistically significant F_{value}), respectively. Different letters identify samples that are significantly different ($P \leq 0.05$).

666 ***: $P \leq 0.001$.

667 †: industrial by-products; ‡: retailer by-products.

668 F.W. = fresh weight; MLC: mean lipid content per prepupa; PLP: percentage of living prepupae at the end of the experiment; T: time to achieve 95% of living prepupae; PLP \times MLC/T: lipid yield.

669

670

672 **Table 3.** FA profile of the sample set. Values (mg g^{-1} prepupal fat) are means of three repetitions \pm the standard deviation.

673

Substrate	C _{10:0}	C _{12:0}	C _{14:0}	C _{16:0}	C _{16:1}	C _{18:0}	C _{18:1}	C _{18:2}	C _{18:3}	C _{20:0}	SFA sum	UFA sum	MUF A sum	PUFA sum	UFAs/SFAs	Cetane number
ANOVA (F_{values})	12.6 **	146.6 ***	158.2 ***	47.3 ***	288.1 ***	157.5 ***	138.3 ***	428.9 ***	75.4 ***	407.5 ***	214.6 ***	214.5 ***	237.5 ***	364.0 ***	103.1 ***	
Control	15 ^b ± 1	557 ^e ± 14	76 ^d ± 4	83 ^a ± 3	20.5 ^a ± 0.4	9 ^{ab} ± 1	111.3 ^a ± 0.2	110 ^a ± 3	13.2 ^b ± 0.7	5.5 ^c ± 0.2	745 ^e ± 6	255 ^a ± 6	131.8 ^a ± 0.8	123 ^a ± 5	0.34 ^a ± 0.01	60
SUBSTRATE S GROUP A†																
Barley beer (brewery by-product)	14.0 ^b ± 0.4	485 ^{cd} ± 12	56 ^c ± 1	107.1 ^b ± 0.4	19.3 ^a ± 0.9	10.8 ^{ab} ± 0.8	82 ^a ± 3	205 ^c ± 2	21 ^c ± 1	0.00 ^a ± 0.00	673 ^d ± 9	327 ^b ± 9	101 ^a ± 6	226 ^c ± 4	0.49 ^{ab} ± 0.02	57
Cow's milk whey	13.1 ^b ± 0.9	534 ^{de} ± 17	78.0 ^d ± 0.7	88 ^a ± 2	19.6 ^a ± 0.0	16.6 ^c ± 0.3	114 ^a ± 5	129 ^a ± 8	8 ^a ± 1	0.00 ^a ± 0.00	730 ^{de} ± 19	271 ^{ab} ± 19	133 ^a ± 7	137 ^a ± 13	0.37 ^a ± 0.04	60
Grape stalks	13.9 ^b ± 0.6	170 ^a ± 11	29.2 ^a ± 0.2	128 ^c ± 4	49 ^c ± 3	33.0 ^d ± 0.0	229 ^c ± 9	318 ^d ± 9	29.5 ^d ± 0.8	0.00 ^a ± 0.00	374 ^a ± 23	626 ^e ± 23	278 ^c ± 9	348 ^d ± 14	1.68 ^d ± 0.17	51
Tomato peels and seeds	7.4 ^a ± 0.2	280 ^b ± 8	32 ^{ab} ± 1	89.5 ^a ± 0.1	15.6 ^a ± 0.8	12.3 ^b ± 0.5	165 ^b ± 5	374 ^e ± 3	13.4 ^b ± 0.2	4.2 ^b ± 0.3	425 ^{ab} ± 12	568 ^d ± 13	181 ^b ± 9	389 ^e ± 4	1.34 ^c ± 0.07	51
SUBSTRATE S GROUP B‡																
Bread dough	11.4 ^{ab} ± 0.0	334 ^b ± 9	39.8 ^b ± 0.3	84 ^a ± 1	41 ^b ± 1	10.7 ^{ab} ± 0.4	300 ^d ± 12	169 ^b ± 3	11.0 ^{ab} ± 0.8	0.00 ^a ± 0.00	479 ^b ± 10	521 ^d ± 10	341 ^d ± 15	180 ^b ± 5	1.09 ^c ± 0.04	55
Fish scraps	14.8 ^b ± 0.8	439 ^c ± 9	38.4 ^b ± 0.0	77 ^a ± 1	71.6 ^d ± 0.2	8.3 ^a ± 0.8	205 ^c ± 5	105 ^a ± 3	13.0 ^b ± 0.7	6.5 ^d ± 0.2	584 ^c ± 14	395 ^c ± 10	276 ^c ± 8	118 ^a ± 5	0.68 ^b ± 0.04	59

674

675 Results of one-way ANOVA and Tukey's test are reported as F_{value} and letters (for statistically significant F_{value}), respectively. Different letters
676 identify samples that are significantly different ($P \leq 0.05$).

677 **: $P \leq 0.01$; ***: $P \leq 0.001$.

678 †: industrial **by-products**; ‡: retailer **by-products**.

679 SFA, saturated fatty acids; UFA, unsaturated fatty acids; MUFA, monounsaturated fatty acids; PUFA, polyunsaturated fatty acids; UFAs/SFAs,
680 unsaturated fatty acid sum to saturated fatty acids sum ratio.

Figure 1. (A) PC1 vs PC2 and (B) PC1 vs PC3 loading plots of main parameters related to the analyses of substrates used for black soldier fly growth with the explained variance (%).

MW: mean lipid content per prepupae; PLP: percentage of living prepupae at the end of the experiment; MUFA, monounsaturated fatty acids; PUFA, polyunsaturated fatty acids; SS, saturated fatty acids; TFC, total fat content; US, unsaturated fatty acids; U/S, saturated fatty acid sum to unsaturated fatty acids sum ratio.

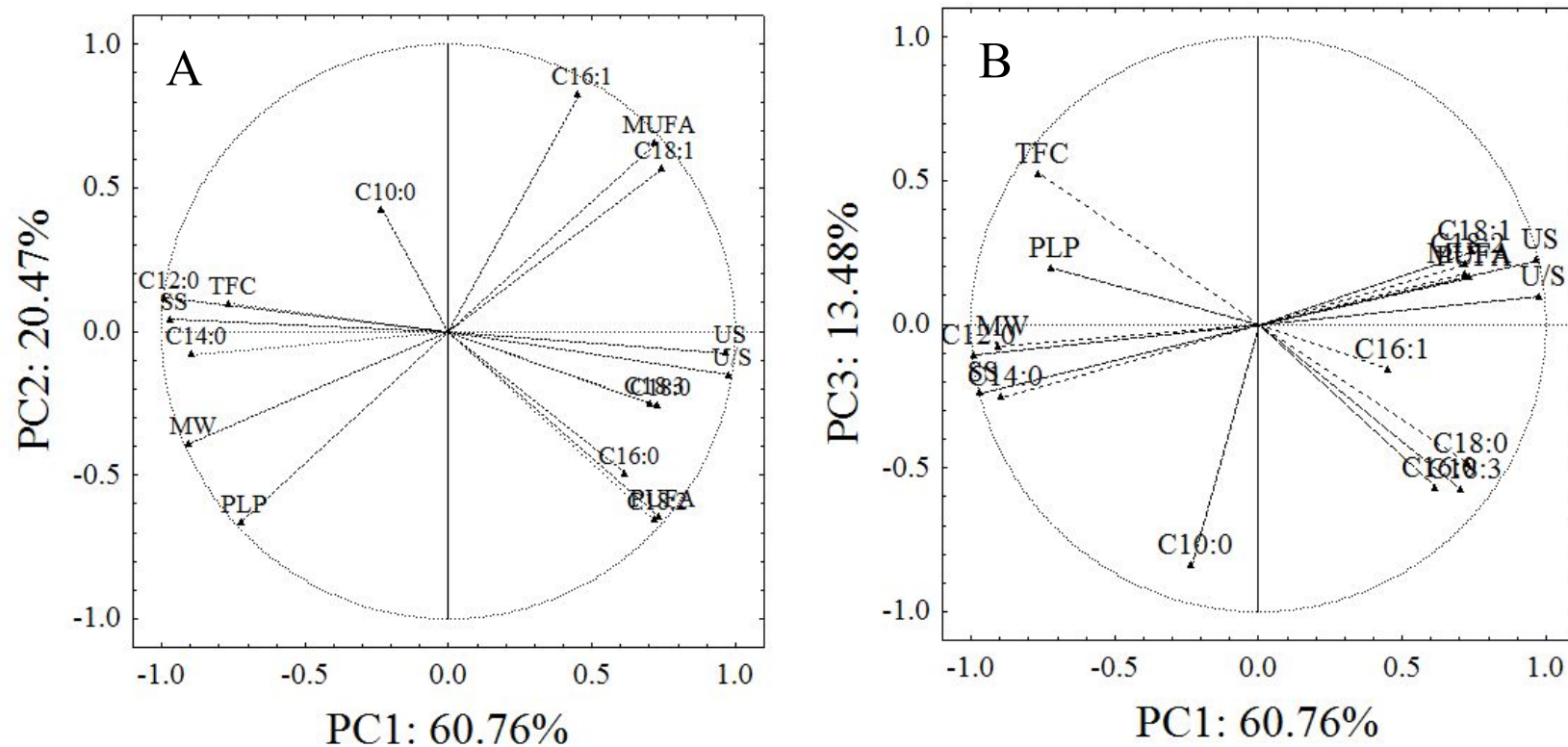


Figure 2. (A) PC1 vs PC2 and (B) PC1 vs PC3 score plots of substrates used for black soldier fly growth with the explained variance (%).

