

This is the peer reviewed version of the following article:

CASE report: Acute hepatic failure secondary to metastatic LIVER'S infiltration by upper tract urothelial carcinoma / Serra, Francesco; Guidetti, Cristiano; Spatafora, Francesco; Cabry, Francesca; Farinetti, Alberto; Mattioli, Anna Vittoria; Gelmini, Roberta. - In: ANNALS OF MEDICINE AND SURGERY. - ISSN 2049-0801. - 45:(2019), pp. 66-69. [10.1016/j.amsu.2019.07.019]

Terms of use:

The terms and conditions for the reuse of this version of the manuscript are specified in the publishing policy. For all terms of use and more information see the publisher's website.

16/04/2024 23:24

(Article begins on next page)

Accepted Manuscript

CASE report: Acute hepatic failure secondary to metastatic LIVER'S infiltration by upper tract urothelial carcinoma

Serra Francesco, MD, Guidetti Cristiano, MD, Spatafora Francesco, MD, Cabry Francesca, MD, Farinetti Alberto, MD, Mattioli Anna Vittoria, MD, Gelmini Roberta, MD PhD

PII: S2049-0801(19)30088-3

DOI: <https://doi.org/10.1016/j.amsu.2019.07.019>

Reference: AMSU 1400

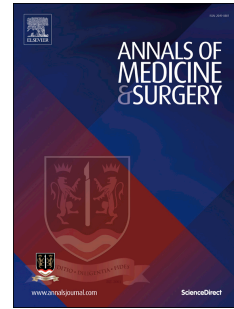
To appear in: *Annals of Medicine and Surgery*

Received Date: 2 May 2019

Accepted Date: 8 July 2019

Please cite this article as: Francesco S, Cristiano G, Francesco S, Francesca C, Alberto F, Vittoria MA, Roberta G, CASE report: Acute hepatic failure secondary to metastatic LIVER'S infiltration by upper tract urothelial carcinoma, *Annals of Medicine and Surgery*, <https://doi.org/10.1016/j.amsu.2019.07.019>.

This is a PDF file of an unedited manuscript that has been accepted for publication. As a service to our customers we are providing this early version of the manuscript. The manuscript will undergo copyediting, typesetting, and review of the resulting proof before it is published in its final form. Please note that during the production process errors may be discovered which could affect the content, and all legal disclaimers that apply to the journal pertain.



TITLE: CASE REPORT: ACUTE HEPATIC FAILURE SECONDARY TO METASTATIC LIVER'S INFILTRATION BY UPPER TRACT UROTHELIAL CARCINOMA

RUNNING TITLE: Case report of an unusual presentation of acute hepatic failure

AUTHORS:

Serra Francesco, MD

Department of Surgery, University of Modena and Reggio Emilia – Policlinico of Modena, Modena Italy
Via del Pozzo, 71 41100 Modena Tel: +390594223662 FAX: +390594224370
serrafrancescomd@gmail.com

Author and supervisor of entire manuscript

Guidetti Cristiano, MD

Department of Surgery, University of Modena and Reggio Emilia – Policlinico of Modena, Modena Italy
Via del Pozzo, 71 41100 Modena Tel: +390594223662 FAX: +390594224370
cristianogui@yahoo.it

Co-author of entire manuscript

Spatafora Francesco, MD

Department of Surgery, University of Modena and Reggio Emilia – Policlinico of Modena, Modena Italy
Via del Pozzo, 71 41100 Modena Tel: +390594223662 FAX: +390594224370
Spataf86@virgilio.it

Data collection and co-author of case report and discussion

Cabry Francesca, MD

Department of Surgery, University of Modena and Reggio Emilia – Policlinico of Modena, Modena Italy
Via del Pozzo, 71 41100 Modena Tel: +390594223662 FAX: +390594224370
francesca.cabry@unimore.it

Data and imaging collection

Farinetti Alberto, MD

Department of Surgery, University of Modena and Reggio Emilia – Policlinico of Modena, Modena Italy
Via del Pozzo, 71 41100 Modena Tel: +390594223662 FAX: +390594224370
alberto.farinetti@unimore.it

Review of literature

Mattioli Anna Vittoria, MD

Department of Surgery, University of Modena and Reggio Emilia – Policlinico of Modena, Modena Italy
Via del Pozzo, 71 41100 Modena Tel: +390594223662 FAX: +390594224370
annavittoria.mattioli@unimore.it

Review of literature and co-author of discussion

Gelmini Roberta, MD PhD

Department of Surgery, University of Modena and Reggio Emilia – Policlinico of Modena, Modena, Italy
Via del Pozzo, 71 41100 Modena Tel: +390594223662 FAX: +390594224370.
roberta.gelmini@unimore.it

Supervisor and co-author of entire manuscript

CORRESPONDING AUTHOR:

Gelmini Roberta, MD PhD

Dept. of Surgery – Policlinico of Modena, University of Modena and Reggio Emilia –
Via del Pozzo, 71 41124 Modena, Italy

Tel: +39 0594223662

FAX: +39 0594224370

e_mail: roberta.gelmini@unimore.it

Disclosure statement:

The authors have nothing to disclose.

ACCEPTED MANUSCRIPT

CASE REPORT: ACUTE HEPATIC FAILURE SECONDARY TO METASTATIC LIVER'S INFILTRATION BY UPPER TRACT UROTHELIAL CARCINOMA

Disclosure statement: The authors have nothing to disclose.

The work was written in line with the SCARE criteria [1]

Consent to the processing of data for scientific purposes and for possible publication is requested to patient and signed at the time of admission and kept in the medical record.

ABSTRACT**INTRODUCTION:**

Acute liver failure (ALF) secondary to malignant infiltration of the liver from urothelial carcinoma is a very rare clinical condition and is often diagnosed only after death. Upper tract urothelial carcinoma (UTUC) is a rare, from 5% to 10% of all urothelial tumours, but possible cause of ALF when there is extensive liver metastatic involvement. We report the case of a patient who died in the intensive care unit (ICU) of our hospital from multiple organ failure (MOF) secondary to ALF, as a result of infiltration of the liver from UTUC diagnosed after surgery.

PRESENTATION OF THE CASE:

A 69-year-old Caucasian man was referred to our hospital for hematuria, melena, right upper quadrant (RUQ) pain and jaundice developed over the previous two weeks. After multidisciplinary discussion, he underwent emergency exploratory laparotomy to perform cholecystectomy because of suspected acute cholecystitis considered as a septic focus within the left kidney. He developed MOF and died on the 6th postoperative day.

DISCUSSION:

From the diagnosis of the renal mass and the death of the patient, a few days have passed, and the diagnosis of UTUC has been put only at histological examination. The most common sites of metastases from UTUC are lymph nodes, lungs, liver, bones and peritoneum. Moreover, liver metastases have been identified to have an independent negative impact on overall survival in a patient affected by UTUC.

CONCLUSION:

The authors suggest that this condition should be taken into account when dealing with patients with evidence of a renal mass and simultaneous ALF.

KEYWORDS: Acute liver failure, Upper tract urothelial carcinoma (UTUC), emergency surgery

INTRODUCTION

Acute liver failure (ALF) secondary to malignant infiltration of the liver from urothelial carcinoma is a very rare clinical condition and is often diagnosed only after death[2]. Upper tract urothelial carcinoma (UTUC) is a rare, from 5% to 10% of all urothelial tumours [3], but possible cause of ALF when there is extensive liver metastatic involvement[4]. Rarely these disease are managed in the emergency setting, because are often diagnosed by urologists and the overall survival is about 34 months for the UTUC itself; the most recognized risk factors that cause this tumours are cigarette smoking, exposure to chemical solvents, exposure to arsenic, the use of phenacethine; there is also a clinical entity, the Balkan endemic nephropathy, which determines an interstitial inflammatory damage responsible for 50% of renal tumors in that region.[4]

We report the case of a patient who died in the intensive care unit (ICU) of our hospital from multiple organ failure (MOF) secondary to ALF, as a result of infiltration of the liver from UTUC diagnosed after surgery The

rate of systemic metastasis in UTUC with muscle invasion is about 30%[5]. Only a minority of patients with this condition present involvement of extra-regional lymph nodes and other distant metastasis at the moment of diagnosis[6].

PRESENTATION OF THE CASE

A 69-year-old Caucasian man was referred to our hospital for hematuria, melena, right upper quadrant (RUQ) pain and jaundice developed over the previous two weeks. In his past medical history, the only cholelithiasis was recorded. Physical examination highlighted melena, hemoptysis and tenderness in the RUQ. Laboratory tests run in the emergency department revealed a level of hemoglobin of 7g/dl, platelets 39.000 Migl/mmc, white blood cell 13.99 Migl/mmc (neutrophils 69.9%), PT 1.61, aPTT 3.10, albumin 2.2 g/dl, total bilirubin 9.23 mg/dl, direct bilirubin 7.53 mg/dl, aspartate aminotransferase (AST) 213 IU/l, and alkaline phosphatase 567 IU/l, Creatinine 1.32mg/dl, CRP 5.5 mg/dl.

CT scan of the chest and the abdomen was performed in the emergency department. Diffuse alveolar haemorrhage with right pleural effusion and mediastinal lymphadenopathy was demonstrated. In the abdomen, the main finding was a large solid lesion of the left kidney (6.5cm x 6.2cm), with multiple regional lymphadenopathies and a homogeneously enlarged liver without evident focal lesions. The gallbladder had focal thickening of its walls. Also, the RMI confirmed the presence of a thickened wall of the gallbladder with a surrounding thin fluid layer; no signs of hepatic infiltration from solid organ tumour was detected.

FIG. 1 FIG. 2

The patient was brought to the ICU and required ventilatory support. It was necessary to transfuse him with multiple packed red blood cells, plasma and platelets to revert the hemorrhagic shock he developed soon after hospitalisation, due to bleeding from the left kidney's mass. He also underwent left renal artery embolisation to control the urinary tract bleeding. Since LFTs were out of range, hepatitis A, B, C and E serologies were tested in the suspect of acute hepatitis. They all came back negative. The patient had no history of alcohol abuse, and there were no signs of hepatotoxic medications intake.

After multidisciplinary discussion, he underwent emergency exploratory laparotomy to perform cholecystectomy because of suspected acute cholecystitis considered as a septic focus within the left kidney. At the time of the laparotomy, the liver appeared yellowish with thin fibrous streaks, no signs of acute cholecystitis were observed. However, the cholecystectomy was performed, such as a left nephrectomy and a wide liver biopsy. After the surgical procedure, the clinical condition of the patient rapidly worsened: he developed atrial fibrillation, acute renal failure and respiratory insufficiency. He developed MOF and died on the 6th postoperative day.

The result of histological exams confirmed multiple spots of high-grade carcinoma in hepatic tissue with an immunophenotype compatible with urothelial carcinoma (CK 5/6-; CK20+; CDX2-; PAX8-; TTF1-). A high-grade urothelial carcinoma (pT3) was detected in the left kidney. Gallbladder showed modest acute on chronic inflammation.

The autopsy revealed a grossly enlarged liver, that was granular in appearance with "salt and pepper" distribution of the metastases without any focal lesion. Microscopically there was the near-complete parenchymal replacement by metastatic tissue.

DISCUSSION

We reported the clinical case of a patient who died in an intensive care unit where he was admitted directly from the emergency room in good general conditions but with an initial septic state. From the diagnosis of the renal mass and the death of the patient, a few days have passed, and the diagnosis of UTUC has been put only at histological examination. The absence of a diagnosis and the septic condition of the patient with a radiological doubt of cholecystitis as well as the need to remove the embolized kidney led the multidisciplinary team to decide for surgery. In literature we don't have found one case report similar to

this; we have found that UTUC is uncommon and accounts for approximately 5% of all urothelial malignancies[3,7]. The treatment of choice for patients detected in advanced stage of the disease is the combination of cisplatin-based systemic chemotherapy and radical nephroureterectomy [8]. UTUC also had a high potential for local and distant recurrence[9]. The most common sites of metastases from UTUC are lymph nodes, lungs, liver, bones and peritoneum. Moreover, liver metastases have been identified to have an independent negative impact on overall survival in a patient affected by UTUC[10]. Some author had described that in elderly patients with poor possibilities of survival, the watchful-waiting approach, without surgery, may extend the survival. [11]

Furthermore liver metastases from UTUC are usually multifocal hypodense lesions. In our case the immunophenotype found on liver biopsy specimen evidenced cytokeratin 20 expression associated with low expression of cytokeratin 5/6, that is typical for poorly differentiated tumours characterised by high invasiveness[12]. In literature, the most frequent cause of ALF caused by metastatic infiltration of cancer is another kind of cancer such as small cell lung cancer or neuroendocrine carcinomas and the differential diagnosis has to be done mainly with sepsis and paraneoplastic syndromes such as Stauffer syndrome[13]. Laboratory findings highlighted several negative prognostic serum markers for high-grade UTUC, such as severe anaemia, low levels of albumin and high level of alkaline phosphatase that are described in the literature to be related with advanced pathologic T stage, not an organ-confined disease, lymph-vascular invasion, and tumour necrosis[14].

CONCLUSION

We have described a very rare case that has involved many specialists in emergency department characterised by a challenging clinical condition that had been treated with surgery in an extreme attempt to save the patient. With this case report, the authors suggest that this condition should be taken into account when dealing with patients with evidence of a renal mass and simultaneous ALF.

Patient consent

Consent to the processing of data for scientific purposes and for possible publication is requested to patient and signed at the time of admission and kept in the medical record.

Provenance and peer review

Not commissioned, externally peer reviewed.

REFERENCES

1. Riaz A.Agha, Mimi R.Borrelli, Reem Farwana, Kiron Koshy, Alexander J.Fowler, Dennis P.Orgill, for the SCARE Group. The SCARE 2018 statement: Updating consensus Surgical CAse REport (SCARE) guidelines. *International Journal of Surgery* 2018;60:132-136
2. D. Rowbotham, J. Wendon, e R. Williams, «Acute liver failure secondary to hepatic infiltration: a single centre experience of 18 cases», *Gut*, vol. 42, n. 4, pagg. 576–580, apr. 1998.
3. Jemal A, Siegel R, Ward E, Hao Y, Xu J, Thun MJ. Cancer statistics, 2009. *CA Cancer J Clin* 2009; 59 (4): 225–49
4. M. Rouprêt *et al.*, «European Association of Urology Guidelines on Upper Urinary Tract Urothelial Cell Carcinoma: 2015 Update», *Eur. Urol.*, vol. 68, n. 5, pagg. 868–879, nov. 2015.
5. A. Heidenreich, S. Wilop, M. Pinkawa, D. Porres, e D. Pfister, «Surgical resection of urological tumor metastases following medical treatment», *Dtsch. Arzteblatt Int.*, vol. 109, n. 39, pagg. 631–637, set.

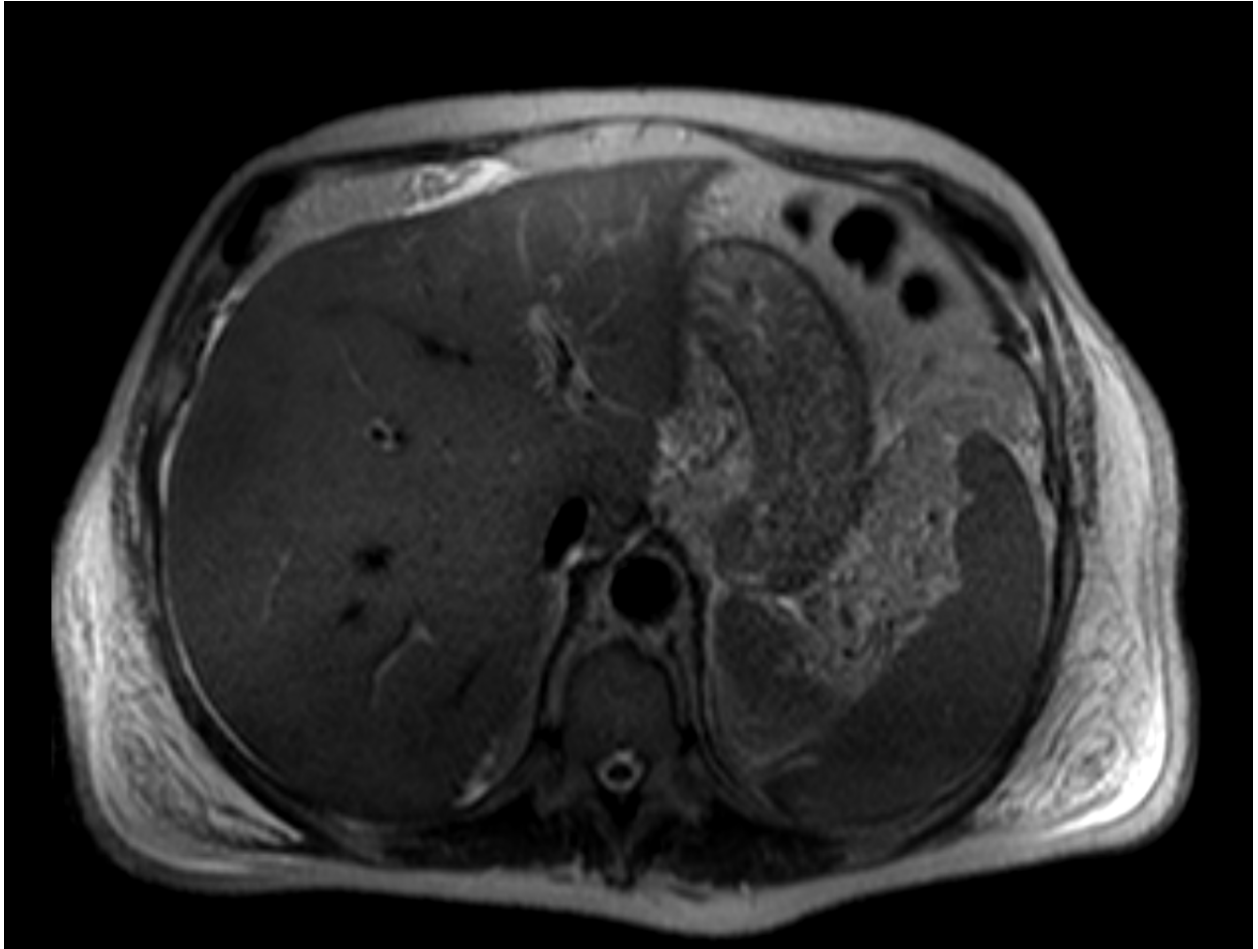
- 2012.
6. J. D. Raman, J. Messer, J. A. Sielatycki, e C. S. Hollenbeak, «Incidence and survival of patients with carcinoma of the ureter and renal pelvis in the USA, 1973-2005», *BJU Int.*, vol. 107, n. 7, pagg. 1059–1064, apr. 2011.
 7. F. Soria *et al.*, «Epidemiology, diagnosis, preoperative evaluation and prognostic assessment of upper-tract urothelial carcinoma (UTUC)», *World J. Urol.*, vol. 35, n. 3, pagg. 379–387, mar. 2017.
 8. T. Seisen *et al.*, «Efficacy of Systemic Chemotherapy Plus Radical Nephroureterectomy for Metastatic Upper Tract Urothelial Carcinoma», *Eur. Urol.*, vol. 71, n. 5, pagg. 714–718, 2017.
 9. A. B. Shinagare, F. M. Fennessy, N. H. Ramaiya, J. P. Jagannathan, M. E. Taplin, e A. D. Van den Abbeele, «Urothelial cancers of the upper urinary tract: metastatic pattern and its correlation with tumor histopathology and location», *J. Comput. Assist. Tomogr.*, vol. 35, n. 2, pagg. 217–222, apr. 2011.
 10. F. Dong *et al.*, «How do organ-specific metastases affect prognosis and surgical treatment for patients with metastatic upper tract urothelial carcinoma: first evidence from population based data», *Clin. Exp. Metastasis*, vol. 34, n. 8, pagg. 467–477, 2017.
 11. Jamil S. Syed *et al.* Survival Outcomes for patients with localised upper tract urothelial carcinoma managed with non-definitive treatment. *BJU Int.* 2018 Jan;121(1):124-129. doi: 10.1111/bju.14042. Epub 2017 Oct 29.
 12. M. Jung, J. H. Lee, B. Kim, J. H. Park, e K. C. Moon, «Transcriptional Analysis of Immunohistochemically Defined Subgroups of Non-Muscle-Invasive Papillary High-Grade Upper Tract Urothelial Carcinoma», *Int. J. Mol. Sci.*, vol. 20, n. 3, gen. 2019.
 13. K. R. Sheth *et al.*, «Prognostic serum markers in patients with high-grade upper tract urothelial carcinoma», *Urol. Oncol.*, vol. 34, n. 9, pagg. 418.e9-418.e16, 2016.
 14. M. Fontes-Sousa, H. Magalhães, F. C. da Silva, e M. J. Maurício, «Stauffer's syndrome: A comprehensive review and proposed updated diagnostic criteria», *Urol. Oncol.*, vol. 36, n. 7, pagg. 321–326, lug. 2018.

FIGURES LEGEND

1. Pre-operative TC that highlight the presence of a thickened wall of the gallbladder
2. RM: no signs of hepatic infiltration or metastasis



ACCEPTED



ACCEPTED

HIGHLIGHTS

- Unusual clinical presentation of acute liver failure from upper urothelial carcinoma (UTUC)
- Rarely these disease are managed in the emergency setting
- the authors suggest that this condition should be taken into account when dealing with patients with evidence of a renal mass and simultaneous ALF.

ACCEPTED MANUSCRIPT

Annals Of Medicine And Surgery Author Disclosure Form

The following additional information is required for submission. Please note that failure to respond to these questions/statements will mean your submission will be returned. If you have nothing to declare in any of these categories then this should be stated.

Please state any conflicts of interest

No conflicts of interest

Please state any sources of funding for your research

Non funding were used

Please state whether Ethical Approval was given, by whom and the relevant Judgement's reference number

No ethical approval was required and consent to the processing of data for scientific purposes and for possible publication is requested to patient and signed at the time of admission and kept in the medical record.

Research Registration Unique Identifying Number (UIN)

Please enter the name of the registry and the unique identifying number of the study. You can register your research at <http://www.researchregistry.com> to obtain your UIN if you have not already registered your study. This is mandatory for human studies only.

The submitted case report is not a research study.

If you are submitting an RCT, please state the trial registry number – ISRCTN

Author contribution

Please specify the contribution of each author to the paper, e.g. study design, data collections, data analysis, writing. Others, who have contributed in other ways should be listed as contributors.

AUTHORS:

Serra Francesco, MD

Department of Surgery, University of Modena and Reggio Emilia – Policlinico of Modena, Modena Italy

Via del Pozzo, 71 41100 Modena Tel: +390594223662 FAX: +390594224370

serrafrancescomd@gmail.com

Author and supervisor of entire manuscript

Guidetti Cristiano, MD

Department of Surgery, University of Modena and Reggio Emilia – Policlinico of Modena, Modena Italy

Via del Pozzo, 71 41100 Modena Tel: +390594223662 FAX: +390594224370

cristianogui@yahoo.it

Co-author of entire manuscript

Spatafora Francesco, MD

Department of Surgery, University of Modena and Reggio Emilia – Policlinico of Modena, Modena Italy

Via del Pozzo, 71 41100 Modena Tel: +390594223662 FAX: +390594224370

Spataf86@virgilio.it

Data collection and co-author of case report and discussion

Cabry Francesca, MD

Department of Surgery, University of Modena and Reggio Emilia – Policlinico of Modena, Modena Italy

Via del Pozzo, 71 41100 Modena Tel: +390594223662 FAX: +390594224370

francesca.cabry@unimore.it

Data and imaging collection

Farinetti Alberto, MD

Department of Surgery, University of Modena and Reggio Emilia – Policlinico of Modena, Modena Italy

Via del Pozzo, 71 41100 Modena Tel: +390594223662 FAX: +390594224370

alberto.farinetti@unimore.it

Review of literature

Mattioli Anna Vittoria, MD

Department of Surgery, University of Modena and Reggio Emilia – Policlinico of Modena, Modena Italy

Via del Pozzo, 71 41100 Modena Tel: +390594223662 FAX: +390594224370

annavittoria.mattioli@unimore.it

Review of literature and co-author of discussion

Gelmini Roberta, MD PhD

Department of Surgery, University of Modena and Reggio Emilia – Policlinico of Modena, Modena, Italy

Via del Pozzo, 71 41100 Modena Tel: +390594223662 FAX: +390594224370.

roberta.gelmini@unimore.it

Supervisor and co-author of entire manuscript

Guarantor

The Guarantor is the one or more people who accept full responsibility for the work and/or the conduct of the study, had access to the data, and controlled the decision to publish.

Gelmini Roberta, MD PhD

Dept. of Surgery – Policlinico of Modena, University of Modena and Reggio Emilia –

Via del Pozzo, 71 41124 Modena, Italy

Tel: +39 0594223662

FAX: +39 0594224370

e_mail: roberta.gelmini@unimore.it