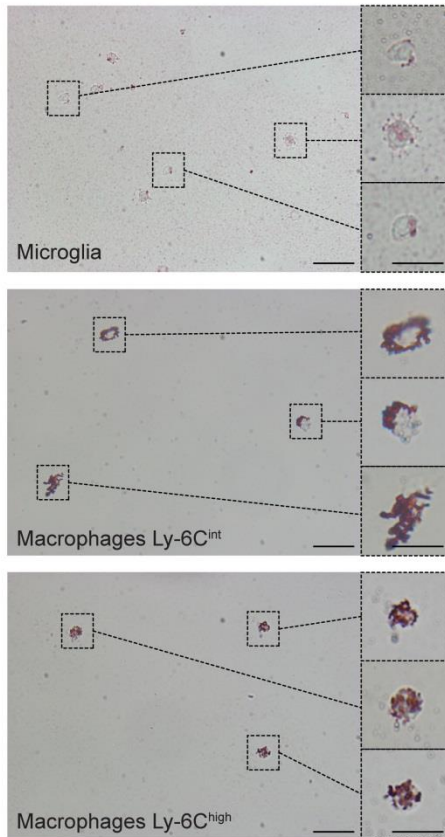
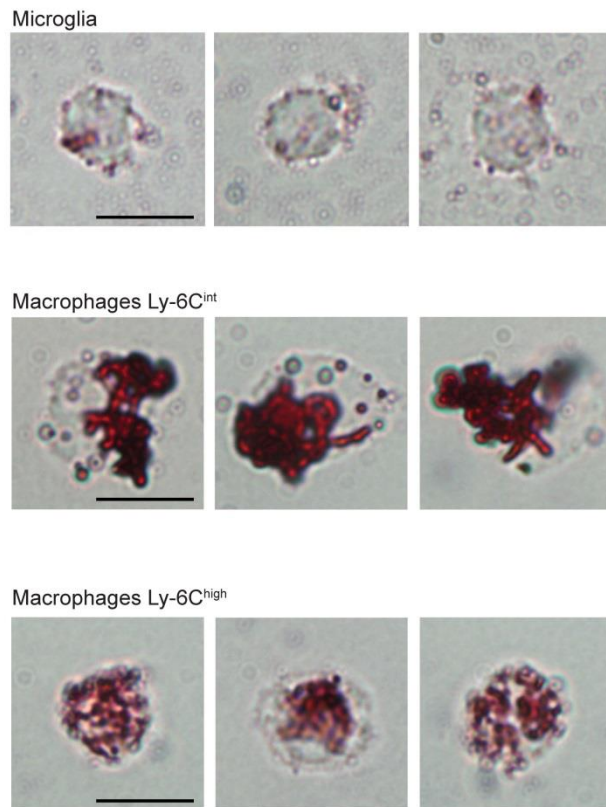


A



B



Supplementary figure 1. Myelin phagocytosis is most pronounced in Ly-6C^{int} macrophages. (A) Oil-Red-O staining of sorted EAE score 4 microglia and Ly-6C^{int} and Ly-6C^{high} macrophages, 40x magnifications are depicted on the left, scale bar is 25 μm ; insets: 100x magnification, scale bar is 12.5 μm . (B) Additional representative images are shown of sorted EAE score 4 microglia, Ly-6C^{int} and Ly-6C^{high} macrophages at 100x magnification, scale bar is 8 μm .