

This is the peer reviewed version of the following article:

Monitoring large cloud-based systems / Andreolini, Mauro; Pietri, Marcello; Tosi, Stefania; Balboni, Andrea. - (2014), pp. 341-351. (Intervento presentato al convegno 4th International Conference on Cloud Computing and Services Science, CLOSER 2014 tenutosi a Barcelona, esp nel 2014) [10.5220/0004794003410351].

SciTePress

Terms of use:

The terms and conditions for the reuse of this version of the manuscript are specified in the publishing policy. For all terms of use and more information see the publisher's website.

07/05/2024 09:07

(Article begins on next page)

Monitoring Large Cloud-Based Systems

Mauro Andreolini¹, Marcello Pietri², Stefania Tosi², Andrea Balboni²

¹*Department of Physics, Computer Science and Mathematics, University of Modena and Reggio Emilia, Via Campi 213/a, 41125, Modena, Italy*

²*Department of Engineering "Enzo Ferrari", University of Modena and Reggio Emilia, Via Vignolese 905/b, 41125, Modena, Italy*

mauro.andreolini@unimore.it, {marcello.pietri,stefania.tosi, andrea.balboni}@unimore.it

Keywords: Monitoring Architecture, Cloud Computing, Large-Scale, Scalability, Multi-Tenancy.

Abstract: Large scale cloud-based services are built upon a multitude of hardware and software resources, disseminated in one or multiple data centers. Controlling and managing these resources requires the integration of several pieces of software that may yield a representative view of the data center status. Today's both closed and open-source monitoring solutions fail in different ways, including the lack of scalability, scarce representativity of global state conditions, inability in guaranteeing persistence in service delivery, and the impossibility of monitoring multi-tenant applications. In this paper, we present a novel monitoring architecture that addresses the aforementioned issues. It integrates a hierarchical scheme to monitor the resources in a cluster with a distributed hash table (DHT) to broadcast system state information among different monitors. This architecture strives to obtain high scalability, effectiveness and resilience, as well as the possibility of monitoring services spanning across different clusters or even different data centers of the cloud provider. We evaluate the scalability of the proposed architecture through a bottleneck analysis achieved by experimental results.

1 INTRODUCTION

Cloud Computing is the most adopted model to support the processing of large data volumes using clusters of commodity computers. According to Gartner, Cloud Computing is expected to grow 19% in 2012, becoming a \$109 billion industry compared to a \$91 billion market last year. By 2016, it is expected to be a \$207 billion industry. This esteem compares to the 3% growth expected in the overall global IT market. Several companies such as Google (?), Microsoft (?), and Yahoo (?) process tens of petabytes of data per day coming from large data centers hosting several thousands nodes. According to (?), from 2005 to 2020, the digital universe will grow by a factor of 300, from 130 EB to 40000 EB, or 40 trillion GB (more than 5200 GB per person in 2020). From now until 2020, the digital universe will about double every two years.

In order to satisfy service level agreements (SLAs) and to keep a consistent state of the workflows in this tangled layout, such growing large infrastructures are usually monitored through a multitude of services that extract and store measurements regarding the performance and the utilization of specific hardware and software resources. These monitoring tools are op-

erated by cloud providers and offered to the services' owners, but also ad-hoc monitoring solutions are designed in order to satisfy the requirements of big companies which own their private cloud infrastructures. For example, Sony uses the closed-source Zyrion Traverse database (?) to claim the monitoring of over 6000 devices and applications over twelve data centers across Asia, Europe and North America. The virtual data layer within the solution collects half a million resource data streams every five minutes.

This scenario requires the design of an advanced monitoring infrastructure that satisfies several properties:

1. **Scalability.** It must cope with a large amount of data that must be collected, analyzed, stored and transmitted at real-time, so as to take timely corrective actions to meet SLAs.
2. **Effectiveness.** It must provide an effective view of the system state conditions that can be used for management purposes and to identify the causes of observed phenomena. It must also adapt its monitoring functions to varying conditions in order to accommodate variable resources, system errors, and changing requirements.
3. **Resilience.** It must withstand a number of com-

ponent failures while continuing to operate normally, thus ensuring service continuity. Single points of failure must be avoided for providing persistence of service delivery.

4. **Multi-tenancy.** It must be able to monitor applications distributed over different data centers in order to better perform troubleshooting activities in dynamic environments such as cloud scenarios.

We state that none of the existing solutions fulfills all these requirements. In this paper we overcome state-of-the-art limits with a novel open-source monitoring infrastructure. We propose a hybrid architecture for a quasi real-time monitoring of large-scale, geographically distributed network infrastructures spread across multiple data centers, designed to provide high scalability, effectiveness and resilience. Here, the term *hybrid* refers to the use of two different communication schemes: a *hierarchical* one and a *P2P-based* one. Each data center is equipped with its own decoupled monitoring infrastructure; each monitor adopts a hierarchical scheme that ensure scalability with respect to the number of monitored resources, in a subset of the whole architecture. Communications between data centers are performed through the root managers, software modules responsible for orchestrating the whole process. The root managers of every decentralized monitor are connected through a custom communication module that implements the P2P Pastry DHT routing overlay (?). In this way, a service distributed across several data centers can be jointly monitored through the appropriate root managers. The internal operations of the monitor are geared towards effectiveness objectives. We provide real-time access to single performance samples or graphs, as well as more sophisticated analysis that aim at identifying system or application states for anomaly detection, capacity planning, or other management studies. Every single component in the infrastructure is designed to be resilient to failures. Whenever possible, we enrich the existing software modules with redundancy and failover mechanisms. Otherwise, we automatically restart the modules in case of failure.

The rest of this paper is organized as follows. Section 2 evaluates the current state-of-the-art in the area of large-scale system monitoring. Section 3 describes the design decisions supporting the described requirements, provides a high level architecture of the entire monitoring infrastructure, motivates the choice of the software components and discusses various implementation details. Section 4 investigates the theoretical scalability limits of the proposed architecture figured out from experimental scenarios. Finally, Section 5 concludes the paper with some remarks and future work.

2 RELATED WORK

Current state-of-the-art monitoring tools do not guarantee scalability, effectiveness, resilience and multi-tenancy objectives.

Fully centralized monitors cannot scale to the desired number of resource data streams. For example, the prototype system introduced in (?), which uses Ganglia (?) and Syslog-NG to accumulate data into a central MySQL database, shows severe scalability limits at only 64 monitored nodes, each one collecting 20 resource data streams every 30 seconds. Here, the main bottleneck is related to the increasing computational overhead occurring at high sampling frequencies. On the other hand, lowering the sampling frequency (commonly, once every five minutes) can make it difficult to spot rapidly changing workloads which in turn may entail the violation of SLAs (?).

Concerning resilience, the vast majority of both open-source and commercial monitoring infrastructures like OpenNMS (?), Zabbix (?), Zenoss (?) and Cacti (?) are not adequate or designed to address failures, especially if combined with the ability to gather and support millions of resource data streams per second.

In terms of effectiveness, most open-source monitoring tools only partially address this aspect. For example, Graphite (?) and Cacti provide only trending analyses, Nagios (?) provides alerting, while Chukwa (?) and Flume (?) are designed exclusively to collect resource data streams or logs. Also current decentralized, per-data-center, hierarchical monitors such as Ganglia (?) are limited to efficiently compute averages of measures spanning over several nodes. However, the complexity of current workloads in modern data centers calls for more sophisticated processing, such as the identification of correlations among different resource data streams, or the detection of anomalies in the global system state.

Astrolabe (?) is a hybrid solution that combines a hierarchical scheme with an unstructured P2P routing protocol for distributed communications as our proposal does. While it is resilient and highly scalable in terms of data collection and storage, it lacks in effectiveness and its manageability is a complex task since it incurs a lot of network traffic. Unstructured systems do not put any constraints on placement of data items on peers and how peers maintain their network connections and this solution suffers from non-deterministic results, high network communication overload and non-scalability of bandwidth consumption (?).

While collection and network monitoring were addressed in many works with significant results (?;

?, ?), the state-of-the-art technology in multi-tenant monitoring is a very niche field. In fact, none of the previous works deals with a multi-tenant environment. At the best of our knowledge, the only open contribution in this sense is given by (?): it extends monitoring based on data stream management systems (DSMS) with the ability to handle multiple tenants and arbitrary data; however it does not address resilience in terms of single points of failure, it has no implemented prototype, and it does not present any type of analysis to support the proposed architectural choices.

3 ARCHITECTURE DESIGN

The early decisions that inspired the design of the proposed architecture share four important goals: (1) to dominate the complexity of the monitoring problem (*Scalability*), (2) to tune the monitoring activities according to different objectives (*Effectiveness*), (3) to avoid single points of failure (*Resilience*), and (4) to monitor services spanning across different clusters or data centers (*Multi-tenancy*). This section details the architecture design of our proposal, with particular emphasis to the design decisions that allow the achievement of the mentioned goals.

3.1 High level architecture

Figure 1 and Figure 2 present the high level architecture of the monitoring infrastructure.

We propose a hybrid architecture using a hierarchical communication scheme to ensure scalability and a P2P-based communication scheme to allow multi-tenancy. In our opinion, a hybrid solution is the only viable alternative for scaling to an arbitrary number of data centers and the huge problem size makes it literally impossible to deploy any kind of centralized infrastructure. Even worse, service centralization would not be fault-tolerant. For these reasons, each cluster in our architecture is equipped with an independent monitoring infrastructure.

In order to scale to millions of data streams per sample interval, it is mandatory to shift preliminary computations (such as the sampling of a resource and the performing of sanity checks on sampled data) as close as possible to the edge of the monitored infrastructure. Failure to do so would result in a system that unnecessarily processes potentially useless data. For this reason, collected resource data streams are initially filtered (or marked as invalid, anomalous) on the monitored nodes where a *collection agent* receives

the samples from several probe processes. Probe processes are responsible for collecting periodically performance and/or utilization samples regarding a set of hardware and software resources. The collection agent performs preliminary validity checks on them, that are executed through dynamic, pluggable modules that receive in input the data stream and respond with TRUE or FALSE. If at least one check fails, the stream is tagged as invalid, but it is never discarded; this facilitates later debugging operations. The following checks are implemented now: missing value, value out of range, sequence of null values. Then, the collection agent updates the resource data streams and sends them to a set of associated collector nodes. We consider both the sending of uncoded (without compression) and coded (lossless compression) data. A detailed description of the collection agent has been presented by the authors in (?).

The collector node is the main component of the *distributed cluster data filter*. It receives the checked and coded resource data streams, performs the necessary decoding, applies low cost analyses on decoded data, and stores their results for a real-time plot or further analysis. In the former case, processing stops and the user is able to see immediately the behavior of the resource data streams. In the latter case, data is made available to the *distributed analyzer system*. Its purpose is to compute more sophisticated analyses on the resource data streams, such as aggregation of information coming from different clusters, identification of correlated components in the system, anomaly detection and capacity planning. The data streams resulting from these analyses are persistently stored in the *distributed data storage*. Here, data is available as (key, value) pairs, where “key” is a unique identifier of a measure and “value” is usually a tuple of values describing it (e.g., timestamp, host name, service/process, name of the monitored performance index, actual value).

The information regarding the data center asset is stored in a *distributed configuration database*. In this way, we strive to avoid possible inconsistencies mainly due to a service being migrated or receiving more resources. The monitoring infrastructure associates data streams to the identifiers of the corresponding monitored resource.

Each monitoring infrastructure is orchestrated by a *root management system*, a software component that organizes the workflow of monitoring operations and provides a programmable monitoring interface to the user. All the root managers dislocated on different data centers are interconnected by an efficient DHT overlay routing network. In this first version of our prototype, the other main task carried out by a root

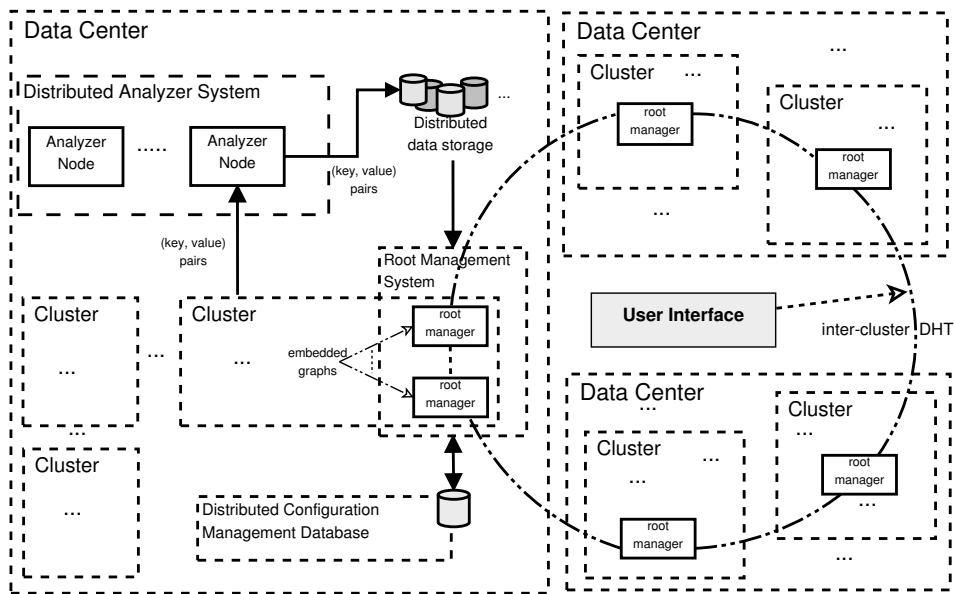


Figure 1: Monitoring system architecture overview

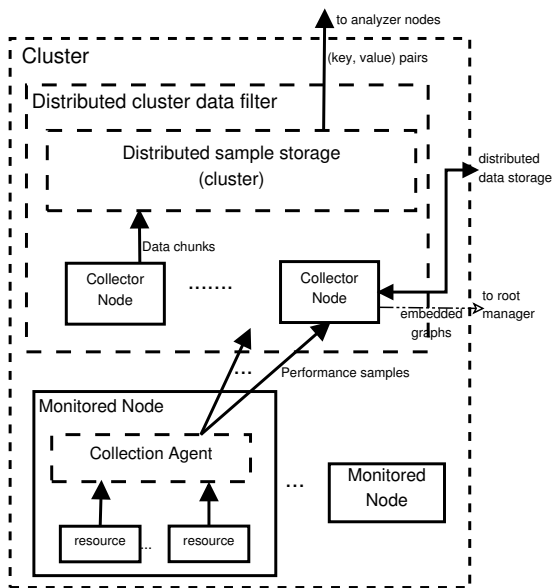


Figure 2: Cluster architecture

manager is to forward early notifications of anomalies in the internal state of some resources to other interested, subscribed root managers. In this way, it is possible to anticipate the performance degradation of services depending on these failing resources.

We used exclusively open-source tools that can be modified and adapted for our goals. We used GNU/Linux Debian, Ubuntu and Fedora OSs in different experimental testbeds, enhanced with the software packages from the Cloudera repository (CDH4). The languages used for the deployment of our mod-

ules are Bash (v4.2.36), Python (v2.7), Java (v1.6), JavaScript and C (where efficiency is needed, such as in our modified monitor probes). The batch processing framework is Hadoop, version 2.0. Our choice is motivated by the dramatic scalability improvement with respect to traditional RDBMS-based data storage architectures under random, write-intensive data access patterns (?). To avoid single points of failure and to ensure service continuity, we enforce redundancy of every component of the monitoring architecture. Whenever possible, we deploy our solution

using software that can be easily replicated. In other cases, we wrap the component through custom scripts that detect failures and restart it, in case.

3.2 The distributed cluster data filter

The resource data streams gathered by the collection agent are sent to the distributed cluster data filter, shown in Figure 3. Here, a collector process receives the checked and coded resource data streams.

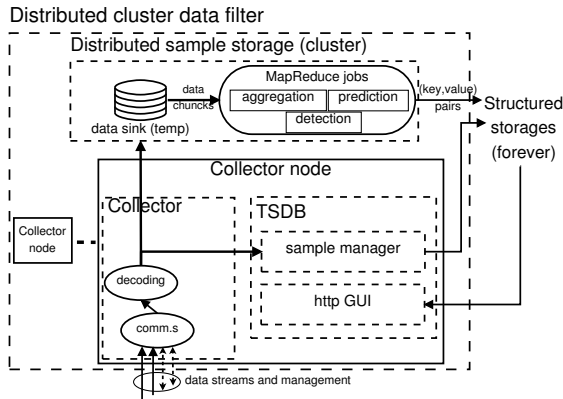


Figure 3: Distributed cluster data filter

The received data streams are decoded and later analyzed to extract a representation of the cluster state, thus guaranteeing the effectiveness of our monitoring infrastructure. Resource data streams coming from different nodes are processed through sophisticated analyses that aim to guarantee high accuracy and significantly reduced human intervention. In order to support real-time analytics at large scale, at this level we adopt analytic approaches having linear computational complexity and adaptive implementation. Linear solutions permit to understand system behavior in real-time, so as to diagnose eventual problems and take timely corrective actions to meet service level objectives. Adaptivity allows analytic approaches to accommodate variable, heterogeneous data collected across the multiple levels of abstraction present in complex data center systems. Example analyses we implemented at this stage include:

1. computing moving averages of resource data streams, in order to provide a more stable representation of a node status;
2. aggregating (both temporally and spatially) node state representations to obtain global views of the cluster state conditions;
3. extracting trends for short-term prediction of resource consumption and of cluster state conditions;

4. detecting state changes and/or anomalies occurring in data streams for the erase of alarms and the adoption of recovering strategies;
5. correlating node state representations in order to identify dependencies among different nodes in the cluster and to exclude secondary flows.

Nodes and cluster state representations are then sent to two different storages: one for real-time plotting of the decoded and analyzed resource data streams, and one for non-real-time later processing at highest levels.

The former storage for real-time plotting is handled by OpenTSDB (?), a software for the storage and configurable plotting of time series. We have chosen OpenTSDB because it is open-source, scalable, and it interacts with another open-source distributed database, HBase (?). It retains time series for a configurable amount of time (defaults to forever), and it allows to create custom graphs on the fly. We have modified few parts of OpenTSDB (shown in Figure 4) in order to plot a simple but real-time prediction of resources trend. This analysis is performed using a linear regression and a Gaussian kernel.

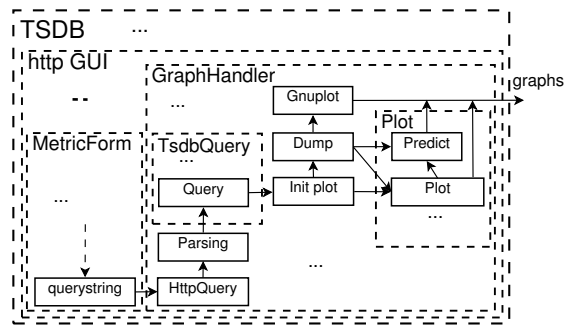


Figure 4: OpenTSDB schema improvements for prediction

The latter storage for non-real-time processing, called *data sink*, receives data destined to further processing performed by the distributed analyzer described in the following subsection. This solution reduces the number of files generated from one per node per unit time to a handful per cluster (?). To enhance the performance of the storage engine, we chose to pack the resource data streams (few bytes per each) in larger chunks (64KB by default) and to write them asynchronously to a distributed file system that can be scaled to the appropriate size by easily adding back-end nodes. In order to provide a homogeneous software layer (eg., Hbase coupling) and an open-source platform, and in order to support a map-reduce paradigm, the best possible choice is the Hadoop Distributed File System (HDFS). It allows extremely scalable computations, it is designed to run

on commodity hardware, it is highly fault-tolerant, it provides high throughput access to application data, and it is suitable for applications that have large data sets.

Every time new samples are added to the resource data streams and representations, an extra overhead is paid due to data storage. As previous literature shows, in this scenario characterized by frequent, small, random database requests (?), write operations to secondary storage do suffer from scalability issues. To reduce this overhead, write operations should be grouped and batched to secondary storage. We believe that the map-reduce paradigm (?) is well suited to this purpose. If needs be, several collectors can be added to scale the acquisition process to the desired number of resource data streams. The collector is designed to scale up to thousands of data streams, providing that limitations on the maximum number of TCP connections and open files can be raised. In GNU/Linux, this can be easily achieved by changing some system parameter and/or by recompiling the Linux kernel and the GNU C library.

3.3 The distributed analyzer system

The distributed analyzer system is composed by a set of analyzer nodes (Figure 5). Each analyzer node runs arbitrary batch jobs that analyze the state representation data streams of nodes and clusters. At this stage, we admit the implementation of more computational expensive analyses with respect to those applied at the cluster level. Now, analyses are applied only to small sets of representative information (i.e., nodes and cluster state representations) from which we require to obtain relevant information for management with high levels of accuracy.

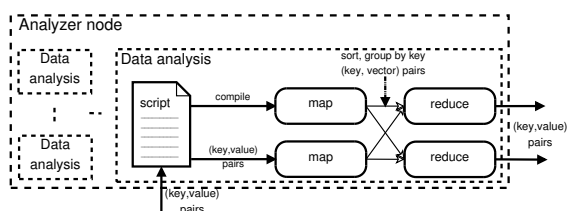


Figure 5: Analyzer node

For example, analyses implemented at data center level are:

1. aggregation of cluster state representations to obtain global views of the data center state conditions;
2. long-term prediction of clusters and data center state conditions computed at different temporal scales and with different prediction horizons;

3. detection of changes and anomalous events in data center state conditions with the identification of which node(s) in the different clusters is the culprit.

The batch jobs first read the necessary data streams (*map*) from the distributed cluster data filter storages, and then run the appropriate scripts (*reduce*) for analysis. The adoption of map-reduce allows to perform sophisticated analysis over the collected resource data streams in a scalable fashion with commodity hardware (or even in a leased platform such as Amazon EC2). On the contrary, the most advanced state-of-the-art monitors compute at most moving averages of regular windows of past samples. To the best of our knowledge, this paper represents one first step beyond this limit in a quasi real-time scenario.

The result of the map-reduce paradigm is a reduced set of (key, value) pairs that is written to the distributed data storage. The goal shared by these operations is to compute a reduced state information of each cluster, and to produce few figures of merit that show the health status of the entire data center. Through these results, it is possible to tell whether the service is about to misbehave or not and, in the former case, also to tell which resource(s) and which node(s) are the culprits.

We choose the Pig framework for the implementation of the analysis scripts (?). Pig offers richer data structures over pure map-reduce, for example multivalued and nested dictionaries. Each Pig script is compiled into a series of equivalent map-reduce scripts that process the input data and write the results in a parallel way. Our scripts implement the analyses mentioned above. Further analyses can be easily supported by our architecture and implemented to satisfy more sophisticated requests.

3.4 The distributed data storage

Both the reduced streams representing the system state and the resource data streams processed by OpenTSDB must be written into a data storage. For the sake of performance, it is possible to avoid the reuse of the same structured storage. As matter of facts, the data storage:

- must scale with an increasing number of data streams;
- must be fault tolerant;
- should be designed towards the data management.

In this context, we choose Apache HBase (?) also because of the fact that it includes the homogeneity and the reuse of components. In our architecture, the

HBase storage is responsible to preserve all the analyzed information about nodes, clusters and data center. Apache HBase is a distributed column-oriented database built on top of HDFS, designed from the ground-up to scale linearly just by adding nodes. It is not relational and it does not support SQL, but thanks to the proper space management properties, it is able to surpass a traditional RDBMS-based system by hosting very large and sparsely populated tables on clusters implemented on commodity hardware.

3.5 The distributed configuration database

In the proposed architecture, a configuration database is needed to store all information related to the asset of a cluster. Asset-related information includes a description of the resource metadata (name, id), placement (IP of the hosting node or virtual machine), sampling period, and a description of the time interval during which the resource is supposed to be assigned to a service. We think that it is a good idea to use off-the-shelf Configuration Management DataBase Systems (CMDBs). A CMDB is a repository of information related to all the components of an information system, and contains the details of the configuration items in the IT infrastructure. However, the majority of CMDBs is not natively fault tolerant. We address this shortcoming by replicating both its Web front-end and DB back-end.

The configuration management database of our choice is OneCMDB. It is an open-source CMDB for data centers that can store configurations such as hardware, software, services, customers, incidents, problems, RFCs and documents. OneCMDB conforms to IT Management best practice declared by the Information Technology Infrastructure Library. It adopts a client-server paradigm and it is used in large production environments with thousands of configuration items. An enhanced graphical user interface enables more effective system operations. Scaling and fault tolerance are not included in the majority of CMDBs, including OneCMDB. To address these shortcomings, we replicate both its front-end and back-end. The front-end is replicated through highly scalable Linux Virtual Server (LVS). The architecture of the server cluster is fully transparent to root managers, and the root managers interact as if it was a single high-performance virtual server. The back-end is replicated through an off-the-shelf, load balanced, master-slave MySQL setup (v. 5.1).

3.6 The root management system

As shown in Figure 6, the root management system is composed of three distinct areas: orchestration, communication and failover.

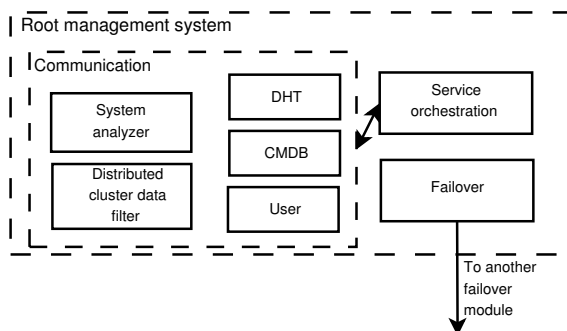


Figure 6: The root management system

The orchestration module is the heart of the monitoring system since it orchestrates the operations of the other aforementioned components (collector, data filter, analyzer). One of its main tasks is to trigger and to abort the execution of batch jobs in the distributed cluster data filter and in the analyzer nodes.

The communication module is a simple messaging system used to interact with the other components of the monitoring architecture in order to communicate relevant information (such as anomalies in some resource state) to other monitoring systems dislocated in different data centers. The root manager node also receives commands from the user interface; these commands are forwarded to and processed by the orchestration module. The user interface is basically a Web-based application running on any selected node. It manages the resources owned by an application and provides a programmable dashboard with figures of merit, diagrams and configuration parameters (monitored nodes, resources, performance indexes, sampling intervals). Each cluster and each monitored process is represented using embedded OpenTSDB graphs, while the system view is represented using a similar but customized interface that supports also long-term predictions, aggregation analysis, detection and capacity planning.

The failover module ensures fault tolerance by identifying which root managers are compromised and by restoring a safe state. To this purpose, each root manager runs part of the replica of the other root managers in the same data center. If a root manager fails, the replica becomes the master until the former one is restored.

When a service is installed on the nodes, the collection and analysis processes supply this information

to the root management system, which stores it into the distributed configuration database. At each application deployment, a list of the involved nodes is defined. A unique key is associated to this list; both the key and the list are shared through the DHT with each root management system. The root management system responsible for the largest number of involved nodes selects its best root manager on the basis of multiple configurable metrics. Finally, the selected root manager becomes the service leader.

The root managers are connected as previously shown in Figure 1. Each data center is composed by a set of root manager nodes connected through a Pastry-based Distributed Hash Table (DHT). We chose Pastry (?) because it is a generic, scalable and efficient substrate for P2P applications that forms a decentralized, self-organizing and fault-tolerant overlay network. Pastry provides efficient request routing, deterministic object location, and load balancing in an application-independent manner. Furthermore, it provides mechanisms that support and facilitate application-specific object replication, caching, and fault recovery. The DHT communication module implements all the needed overlay routing functions.

The root management system is built upon a set of custom Python and Java modules. The DHT is implemented through the freepastry libraries. The publish-subscribe mechanism used to broadcast alerts to the interested root managers is implemented through Scribe (?). We previously discussed these aspects from a security point-of-view in (?).

We implemented the user interface using the Django MVC framework and the JQuery library to enhance the presentation of data. The responsiveness of the application is improved through the adoption of AJAX-based techniques and the Web server Apache v.2.2.

4 ANALYSIS

We perform experimental analyses for evaluating the ability of the proposed monitoring architecture in satisfying all requirements of scalability, effectiveness, resiliency and multi-tenancy. Due to the limited space, in this section we only report analysis results about the scalability of our solution. We evaluate the scalability of the proposed architecture in terms of number of monitored resource data streams. In particular, we aim to find out:

- how many resource data streams can be monitored per node (intra-node scalability);
- how many nodes can be monitored in a cluster (intra-cluster scalability).

Highest level scalability (intra-data center scalability) is left for future extensions and strongly depends on both resource behaviors and aggregation results obtained through analytics computed in the distributed analyzer system. In this paper, we used the Amazon EC2 IaaS platform. In the considered infrastructure, the backing storage is shared across the instances (EBS), and the theoretical network connectivity is up to 1Gbps. The virtual machines are running instances of the TPC-W and RUBiS benchmark suites. MapReduce jobs queries are used for data distribution and analysis. We perform Map-Reduce versions of several performance analyses having different computational costs, including the moving average and the Principal Component Analysis (PCA) over more than 1 hour of data collected from 2048 monitored nodes. We emphasize that the results are strongly influenced by the resource consumption of the TSDB component, and the tuning of this trade-off is out of the scope of this paper. However, we measure that the PCA (i.e., the most computational expensive analysis) requires an average of 5 minutes when computed over 8 collector nodes using around the 85% of CPU (the 12.5% was used for collector process). This result shows that the behavior of a single cluster during the collection of over more than 6M of resource data streams per second can be analyzed (in batches) within quasi real-time constraints.

In each monitored node, one probe is dedicated to system-related performance monitoring through the output of the vmstat and sar monitors. The remaining probes are process-related through pidstat and nethogs2 monitors. This system probe collects 25 different performance indexes, while each process probe collects 23 different resource data streams. The sampling interval is configured at 1 second for each probe in order to emulate the most challenging scenario.

4.1 Intra-node scalability

In the first experimental testbed, we evaluate how many resource data streams can be handled for each monitored node. We use one collector node and one analyzer node running a single script that computes the moving average for every resource data stream. The detail of the resources of the monitored node is the following: micro instance, 613 MB memory, up to 2 EC2 Compute Units (Dual-Core AMD Opteron(tm) Processor 2218 HE, cpu 2.6 GHz, cache size 1,024 KB), EBS storage, dedicated network bandwidth of theoretically 100 Mbps per node.

Table 1 reports the average resource consumption (percentage of CPU, memory (RAM) and network (NET) utilization) of the collection agent as a function

Table 1: Average resource utilization of the collection agent

#probes	#resource data streams	Without compression			Lossless compression			Adaptive algorithm		
		CPU (%)	RAM (%)	NET (%)	CPU (%)	RAM (%)	NET (%)	CPU (%)	RAM (%)	NET (%)
1	25	0.0	0.4	0.005	0.3	0.4	0.002	0.1	0.5	0.001
2	48	0.1	0.5	0.009	0.5	0.5	0.004	0.1	0.5	0.002
4	94	0.1	0.6	0.019	1.1	0.6	0.009	0.2	0.7	0.004
8	186	0.1	1.0	0.041	1.8	0.9	0.019	0.3	1.0	0.008
16	370	0.3	1.4	0.085	2.9	1.4	0.041	0.4	1.4	0.016
32	738	0.5	2.5	0.173	4.1	2.6	0.083	0.6	2.7	0.032
64	1474	0.6	4.7	0.352	6.0	4.8	0.162	0.8	4.6	0.069
128	2946	0.9	9.4	0.681	9.8	9.3	0.337	1.2	9.5	0.127
256	5890	2.5	18.7	1.392	23.1	18.3	0.641	3.1	18.8	0.266

Table 2: Average resource utilization of the collector in the distributed cluster data filter

#monitored nodes	#resource data streams	Without compression		Lossless compression		Adaptive algorithm	
		CPU (%)	NET (%)	CPU (%)	NET (%)	CPU (%)	NET (%)
1	2946	0.1	0.971	0.6	0.450	0.1	0.189
2	5892	0.1	1.943	0.9	0.899	0.1	0.355
4	11784	0.2	3.838	2.0	1.797	0.2	0.748
8	23568	0.4	7.763	3.6	3.594	0.4	1.463
16	47136	0.9	15.421	8.1	7.186	0.9	3.001
32	94272	1.9	31.055	17.1	14.374	1.9	5.872
64	188544	3.2	61.980	33.6	28.751	3.2	11.711
128	377088	-	-	69.9	57.539	6.1	23.404
256	754176	-	-	-	-	12.5	47.096
512	1508352	-	-	-	-	23.7	93.691

of the number of monitored resource data streams. We performed tests on both uncoded (*without compression*) and coded (*lossless compression*) data in order to evaluate the impact of compression on the scalability of the different resources. Then, we evaluate how the use of the *Adaptive algorithm* that we proposed in (?) improves the scalability of our architecture. The Adaptive algorithm is able to adapt the frequency of sampling and data updating to minimize computational and communication costs, while guaranteeing high accuracy of monitored information. From these tests, we see that at intra-node level, sending data streams has a negligible impact on the network bandwidth, despite the fact that it is reduced of about 50% by using lossless compression and more than 80% by using the Adaptive algorithm. We see also that the most used resource without data compression or with Adaptive algorithm is the memory, while with lossless compression the most used resource is the CPU. At 128 probes, both the CPU and memory utilizations are less than 10%. This threshold is commonly used as the largest fraction of resource utilization that administrators are comfortable devoting to monitoring. We have adopted this threshold as our target maximum resource utilization for the monitoring system. Hence, on each monitored node, we can collect up to 128 probes for a total of 2,946 resource data streams

per second. We recall that a period of one second is much shorter than commonly adopted sampling periods that typically do not go below one minute.

4.2 Intra-cluster scalability

In the following set of experiments, we consider nodes within a cluster, monitored with the same probe setup. We measure the resource consumption of the collector at cluster level with or without compression efforts and with the Adaptive algorithm.

Table 2 reports the average resource consumption of the collector node as a function of the number of monitored nodes. From this table, we see that without compression the most used resource is the network that allows the monitoring of at most 64 nodes (or 188,544 resource data streams) in a cluster. On the contrary, compressing data strongly impacts the CPU utilization. Despite that, the compression of data allows to monitor more than 128 nodes or $2,946 \cdot 128 = 377,088$ resource data streams per second. By using the Adaptive algorithm we are able to monitor up to 512 nodes per collector, meaning 1.5M resource data streams per second.

As further result, we add collector nodes and increment the number of monitored hosts to evaluate the scalability of the distributed cluster data filter. Table 3

reports the average resource utilization across the collector nodes.

We keep adding collectors up to 2,048 monitored nodes. We also add more HDFS and HBASE nodes to support the write throughput when the number of nodes becomes higher than 256. We keep 256 as limit in the number of nodes since overcoming the 50% of incoming network bandwidth of the collector node means overcoming the 100% of outgoing bandwidth as can be inferred by Figure 3. In this scenario, by using the Adaptive algorithm we are able to monitor about 6M resource data streams by using an average 12.5% of CPU and 47.3% of network bandwidth.

Table 3: Average resource utilization of a collector process over the distributed cluster data filter

#monitored nodes	#resource data streams	collector		
		#nodes	CPU (%)	NET (%)
256	754176	1	12.5	47.096
512	1508352	2	12.8	48.327
1024	3016704	4	12.2	46.851
2048	6033408	8	12.4	46.908

This analysis on scalability reveals that the proposed architecture is able to collect and process:

- more than 2900 resource data streams per second, from 128 probes, on a single monitored node, with a resource utilization <10%;
- more than 754000 resource data streams per second, from 256 different monitored nodes using a single collector node;
- more than 6000000 resource data streams per second per cluster.

By using the TSDB component (see Figure 3), every collector node provides the real-time plotting. In Table 4, we report the resource consumption of this process. In this testbed we request an increasing number of graphs (from 10 to 100) and we set a refresh rate of 15 seconds for each graph.

As for the collector process, the memory consumption of the TSDB component is negligible with respect to the CPU consumption. The TSDB process uses about the 66% of CPU while plotting 100 graphs (i.e. 30000 resource data streams) for each collector node every 15 seconds. Moreover, Table 4 shows that both the incoming and outgoing network bandwidth consumptions are negligible if compared to the network consumptions of the collector process. By using the 12.5% and the 66.4% of CPU for the collector and TSDB respectively, more than the 20% of spare CPU can be used for other purposes like the execution of the Distributed sample storage jobs.

Table 4: Average resource utilization of a TSDB process over the distributed cluster data filter

#graphs	#resource data streams	CPU (%)	NET In (%)	NET Out (%)
10	4500	10,3	0,077	0,131
25	11250	25,1	0,163	0,265
50	22500	49,8	0,329	0,538
100	30000	66,4	0,432	0,714
100	45000	98,2	0,671	1,099

5 CONCLUSIONS

In this paper, we proposed a novel hybrid architecture for monitoring large-scale, geographically distributed network infrastructures spread across multiple data centers. Architectural choices are made in order to satisfy scalability, effectiveness, resiliency and multi-tenancy requirements. These choices are mandatory when you have to support gathering and analysis operations of huge numbers of data streams coming from cloud system monitors. The proposed architecture is already integrated with on-line analyzers working at different temporal scales. Our preliminary experiments show the potential scalability limits of the monitoring system: more than 6M of resource data streams per cluster, per second. All these operations of data streams are carried out within real-time constraints in the order of seconds thus demonstrating that huge margins of improvement are feasible.

Future work includes the evaluation of traffic scalability between data centers for common analytics for monitoring and the comparison with respect to state-of-the-art system architectures (?; ?; ?; ?).