

OPEN

# Digital Twins of Acute Hypoxemic Respiratory Failure Patients Suggest a Mechanistic Basis for Success and Failure of Noninvasive Ventilation

**OBJECTIVES:** To clarify the mechanistic basis for the success or failure of noninvasive ventilation (NIV) in acute hypoxemic respiratory failure (AHRF).

**DESIGN:** We created digital twins based on mechanistic computational models of individual patients with AHRF.

**SETTING:** Interdisciplinary Collaboration in Systems Medicine Research Network.

**SUBJECTS:** We used individual patient data from 30 moderate-to-severe AHRF patients who had failed high-flow nasal cannula (HFNC) therapy and subsequently underwent a trial of NIV.

**INTERVENTIONS:** Using the digital twins, we evaluated lung mechanics, quantified the separate contributions of external support and patient respiratory effort to lung injury indices, and investigated their relative impact on NIV success or failure.

**MEASUREMENTS AND MAIN RESULTS:** In digital twins of patients who successfully completed/failed NIV, after 2 hours of the trial the mean (sd) of the change in total lung stress was  $-10.9$  (6.2)/ $-0.35$  (3.38) cm H<sub>2</sub>O, mechanical power  $-13.4$  (12.2)/ $-1.0$  (5.4) J/min, and total lung strain 0.02 (0.24)/0.16 (0.30). In the digital twins, positive end-expiratory pressure (PEEP) produced by HFNC was similar to that set during NIV. In digital twins of patients who failed NIV vs. those who succeeded, intrinsic PEEP was 3.5 (0.6) vs. 2.3 (0.8) cm H<sub>2</sub>O, inspiratory pressure support was 8.3 (5.9) vs. 22.3 (7.2) cm H<sub>2</sub>O, and tidal volume was 10.9 (1.2) vs. 9.4 (1.8) mL/kg. In digital twins, successful NIV increased respiratory system compliance  $+25.0$  (16.4) mL/cm H<sub>2</sub>O, lowered inspiratory muscle pressure  $-9.7$  (9.6) cm H<sub>2</sub>O, and reduced the contribution of patient spontaneous breathing to total driving pressure by 57.0%.

**CONCLUSIONS:** In digital twins of AHRF patients, successful NIV improved lung mechanics, lowering respiratory effort and indices associated with lung injury. NIV failed in patients for whom only low levels of positive inspiratory pressure support could be applied without risking patient self-inflicted lung injury due to excessive tidal volumes.

**KEYWORDS:** acute hypoxemic respiratory failure; digital twins; noninvasive ventilation

Noninvasive ventilation (NIV) is increasingly used to support spontaneous breathing in patients with de novo acute hypoxemic respiratory failure (AHRF) (1). When successful, NIV may reduce risk of intubation, death, and length of ICU stay (1). However, NIV failure is associated with increased mortality in patients who are subsequently intubated (1–3). In particular, significant uncertainty exists regarding the potential for additional lung injury if high respiratory effort is not controlled by NIV (3). A recent

Liam Weaver, BEng<sup>1</sup>

Hossein Shamohammadi, MSc<sup>1</sup>

Sina Saffaran, PhD<sup>1</sup>

Roberto Tonelli, MD<sup>2</sup>

Marianna Laviola, PhD<sup>3</sup>

John G. Laffey, MD<sup>4</sup>

Luigi Camporota, MD<sup>5</sup>

Timothy E. Scott, MD<sup>6</sup>

Jonathan G. Hardman, MD<sup>3,7</sup>

Enrico Clini, MD<sup>2</sup>

Declan G. Bates, PhD<sup>1</sup>

Copyright © 2024 The Author(s). Published by Wolters Kluwer Health, Inc. on behalf of the Society of Critical Care Medicine and Wolters Kluwer Health, Inc. This is an open access article distributed under the Creative Commons Attribution License 4.0 (CCBY), which permits unrestricted use, distribution, and reproduction in any medium, provided the original work is properly cited.

DOI: 10.1097/CCM.0000000000006337



## KEY POINTS

**Question:** We aimed to clarify the mechanistic basis for success and failure of noninvasive ventilation.

**Findings:** In digital twins of patients who succeeded on noninvasive ventilation (NIV), the positive inspiratory pressure provided by NIV improved lung mechanics, leading to reduced respiratory effort and reductions in lung stress, strain, driving pressure, and mechanical power. NIV failed in patients for whom only low levels of positive inspiratory pressure support could be applied without increasing the risk of patient self-inflicted lung injury due to excessive tidal volumes.

**Meaning:** Reduction of patients' respiratory efforts by NIV predicts success because it reduces the risk of lung injury.

expert panel of the European Society of Intensive Care Medicine reported insufficient evidence to make a recommendation for, or against, the use of NIV compared with conventional oxygen therapy and suggested that future research should focus on the potential role of high vs. low respiratory drive in determining patient suitability and likelihood of success (4).

Much of this uncertainty may be attributed to the significantly greater difficulties associated with measuring many key patient parameters and, in particular, indices associated with lung injury in spontaneously breathing patients. While respiratory rate (RR) is measurable and commonly available, measuring tidal volume ( $V_T$ ) requires specialized equipment and signal processing, for example, by numerical integration of respiratory flow measured by a pneumotachograph. This also introduces the potential for error, due to some portion of the flow directed to the patient being included in the measurement. To assess inspiratory effort directly, measurement of tidal changes in esophageal pressure ( $\Delta P_{es}$ ) and dynamic transpulmonary pressure require the placement of a dedicated esophageal pressure transducer, while many other key indices of potential lung injury such as mechanical power, lung stress, lung strain, and compliance are difficult or impossible to measure accurately in patients receiving noninvasive respiratory support.

A potential solution to these challenges is to create digital twins (5), based on mechanistic, computational models calibrated using the complete set of data measured in each individual patient. Such digital twins can then be used to estimate nonmeasurable parameters of interest and perform additional experiments that would not be possible in vivo, enriching the data generated by clinical trials and assisting in interpreting and explaining their findings.

Here, we demonstrate the first application of this approach in the context of AHRF, by creating a cohort of digital twins based on detailed individual patient data from 30 moderate-to-severe AHRF patients reported in (6). In that study, the magnitude of the change in inspiratory effort within the first 2 hours of NIV, as measured by reduction in  $\Delta P_{es}$ , was found to be an accurate predictor of NIV outcome at 24 hours. However, the mechanistic basis for the statistical association between  $\Delta P_{es}$  reduction and outcome remains unclear, since many important indices associated with lung injury could not be measured in vivo during the trial.

## METHODS

In the following, we summarize the patient data that were extracted from measurements made in a cohort of AHRF patients and describe how these data were used to develop the digital twins employed in this study. We also detail how various ventilator-induced lung injury indices were calculated and how risk thresholds for these indices were defined. For full methodological details, the interested reader is referred to the **Supplementary Material** (<http://links.lww.com/CCM/H553>).

### Ethical Approval

Ethical approval was not required as no patients were involved in the study, and patient data on which the digital twins were based were previously published in (6).

### Study Population

Anonymized individual patient data were taken from a prospective observational cohort study of 30 patients, performed in a single eight-bed respiratory ICU at the University Hospital of Modena, Italy, between February

and October of 2019 (6). Inclusion criteria were age older than 18 years; the presence of de novo AHRF with a  $P_{aO_2}/F_{iO_2}$  ratio less than 200 mm Hg on high-flow nasal cannula (HFNC) therapy with the flow set at 60 L/min; and the candidate's approval for receiving a NIV trial by the attending ICU staff, whose decisions were made based on clinical conditions, being blinded to the purpose of the study. In the NIV trial, positive end-expiratory pressure (PEEP) was initially set at 6 cm  $H_2O$  and subsequently titrated (4–8 cm  $H_2O$ ) to target a transcutaneous oxyhemoglobin saturation ( $SpO_2$ ) greater than 92% with a delivered  $F_{iO_2}$  less than 70%. Inspiratory pressure support (PS) was initially set at 10 cm  $H_2O$  and then progressively modified to target an expiratory  $V_T$  of predicted body weight less than 9.5 mL/kg and a RR less than 30 breaths/min.  $F_{iO_2}$  was increased to target a  $SpO_2$  of 88–94%. NIV failure ( $n = 12/30$ ) was defined by the need for endotracheal intubation or by death.

### Creation of a Cohort of Digital Twins

A complete set of the available physiologic measurements were extracted from the study data for each patient while on HFNC therapy (i.e., before the NIV trial) and at 2 hours after initiation of NIV. These data were used to further develop a previously validated cardiopulmonary simulator (7–11) (Figs. S1 and S2, <http://links.lww.com/CCM/H553>) to represent spontaneously breathing AHRF patients receiving noninvasive respiratory support. Data from five of the 30 patients were excluded due to concerns about unrealistically large  $V_T$  measurements, presumed to be due to some portion of the flow directed to the patient being erroneously included in the integrated flow signal. Advanced global optimization algorithms running on high performance computing facilities were used to calibrate the parameters of the simulator for each individual patient so that its outputs matched as closely as possible the corresponding data (Tables S2 and S3, <http://links.lww.com/CCM/H553>); for full details and a complete description of the simulator, see the Supplementary Material (<http://links.lww.com/CCM/H553>).

### Risk Thresholds for Indices of Lung Injury

Although the existence of any safe limits is still debated for some lung injury indices (12), as an aid to visualization when comparing the data before and

after initiation of NIV, we defined some potential risk thresholds for the various indices based on the latest results available in the literature (12–15). These are summarized in Table S1 (<http://links.lww.com/CCM/H553>).

### Calculation of Driving Pressure in Spontaneous Breathing With Pressure Support

Recent studies have shown that a brief inspiratory hold technique can provide satisfactory estimation of driving pressure during PS ventilation with spontaneous effort (16). We are able to analyze the distending inspiratory pressure within each digital twin, giving a direct measure of driving pressure in these patients (Fig. S3, <http://links.lww.com/CCM/H553>).

### Separating the Contributions of Patient Effort and External Respiratory Support to Lung Injury Indices

To separate the two, the digital twins had their external respiratory support removed, while their spontaneous respiratory efforts were kept unchanged, and the values of all lung injury indices were recalculated. The differences between the original lung injury indices and those produced when only spontaneous respiratory efforts were present were then attributed to the external respiratory support.

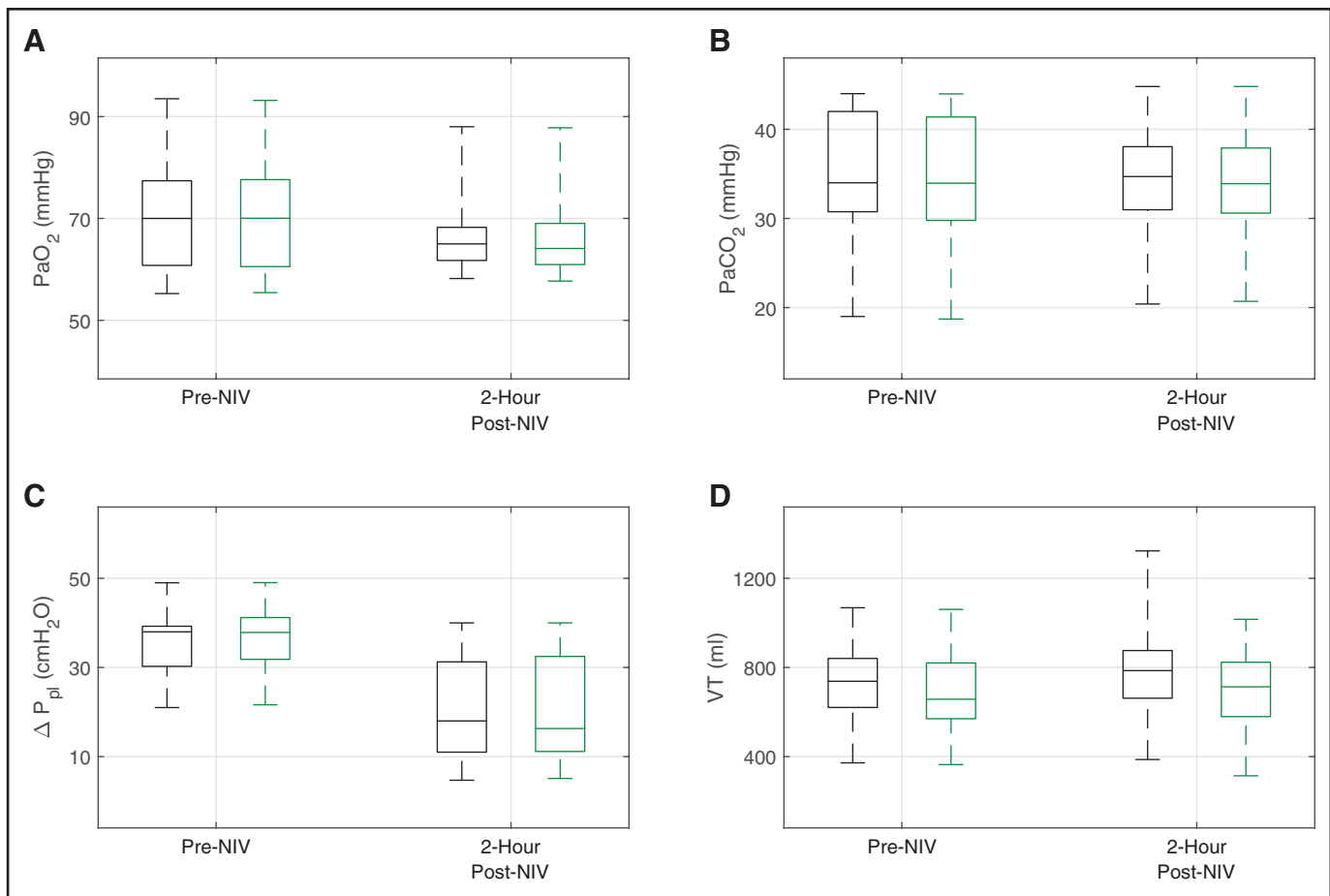
### Statistical Analysis

Data are presented as mean (SD) or shown graphically with box-whisker plots using median, interquartile, and total ranges. To avoid violation of underlying distribution assumptions, variables were compared using the Wilcoxon rank-sum test. A two-sided  $p$  value of less than 0.05 was considered significant. Results that did not achieve statistical significance are denoted in the text with an \*.

## RESULTS

### Digital Twins Accurately Reproduce All Measurements Made in Original Patients

A comparison of the digital twins' outputs for  $P_{aO_2}$ ,  $P_{aCO_2}$ , tidal change in pleural pressure ( $\Delta P_{pl}$ ), and  $V_T$  vs. the individual patient measurements made before



**Figure 1.** Patient data distributions (black) compared with digital twin outputs (green) while on high-flow nasal cannula therapy (before initiation of noninvasive ventilation [NIV]) and 2 hr after initiation of NIV, median, interquartile ranges, and actual ranges for PaO<sub>2</sub> (A), PaCO<sub>2</sub> (B), tidal change in pleural pressure ( $\Delta P_{pl}$ ) (C), and tidal volume (V<sub>T</sub>) (D).

the NIV trial (i.e., while on HFNC therapy) and after 2 hours of NIV is shown in **Figure 1** (for data for each individual patient, see **Tables S4–S6**, <http://links.lww.com/CCM/H553>). In the case of  $\Delta P_{pl}$ , we are comparing the actual  $\Delta P_{pl}$  (available in the digital twins) with its surrogate,  $\Delta P_{es}$  (as measured in patients by esophageal manometry). Mean absolute percentage error/mean absolute bias between the data and the digital twins' outputs under HFNC across the cohort were 0.44%/0.07 mm Hg for PaO<sub>2</sub>, 1.07%/0.33 mm Hg for PaCO<sub>2</sub>, 3.2%/–0.9 cm H<sub>2</sub>O for  $\Delta P_{pl}$ , and 6.35%/40.77 mL for V<sub>T</sub>. After 2 hours of the NIV trial, the errors were 1.21%/0.36 mm Hg for PaO<sub>2</sub>, 1.14%/0.26 mm Hg for PaCO<sub>2</sub>, 1.97%/–0.36 cm H<sub>2</sub>O for  $\Delta P_{pl}$ , and 10.02%/87.29 mL for V<sub>T</sub>.

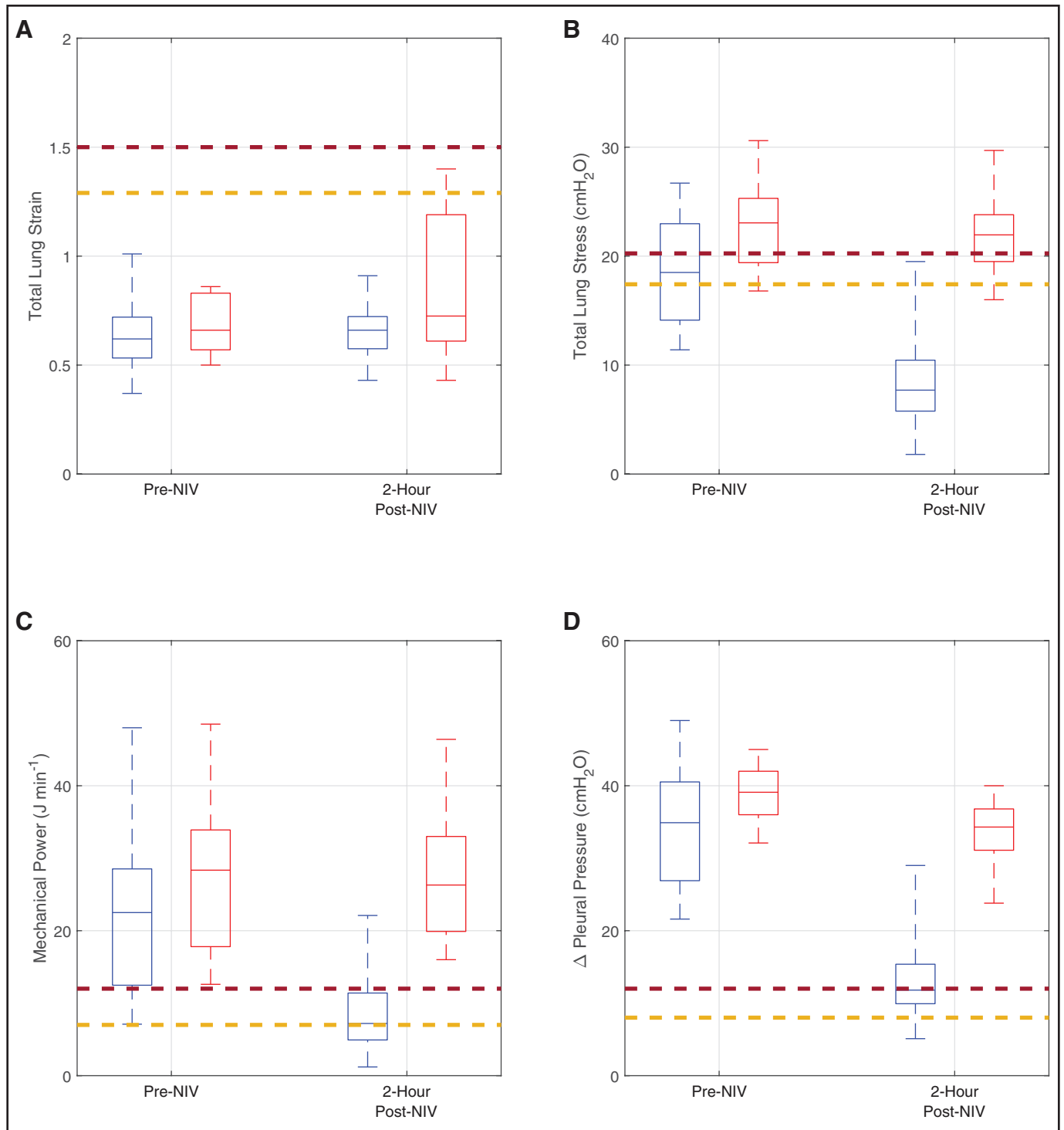
### Digital Twins Reveal Effects of NIV on Lung Injury Indices

**Figure 2** shows the values of total lung strain, total lung stress, mechanical power, and  $\Delta P_{pl}$  calculated in the

digital twins of the NIV success and failure groups after two hours of the NIV trial, compared with the values calculated in the digital twins of the same patients before the trial, that is, while receiving HFNC therapy (for values for individual patients, **Tables S7–S14**, <http://links.lww.com/CCM/H553>). **Figure 3** shows the corresponding changes in the values of the lung injury indices. In the digital twins of patients in whom NIV was successful vs. those who failed NIV, the change in mean total lung strain was +0.02 vs. +0.16\*, the change in mean total lung stress was –10.9 vs. –0.35 cm H<sub>2</sub>O, the change in mean mechanical power was –13.4 vs. –1.0 J/min, and the change in mean  $\Delta P_{pl}$  was –20.6 vs. –5.1 cm H<sub>2</sub>O.

### Mechanistic Basis for Reduced Inspiratory Effort in Successful NIV Patients

Analysis of the data provided by the digital twins suggests that, in patients for whom it was successful, NIV delivered

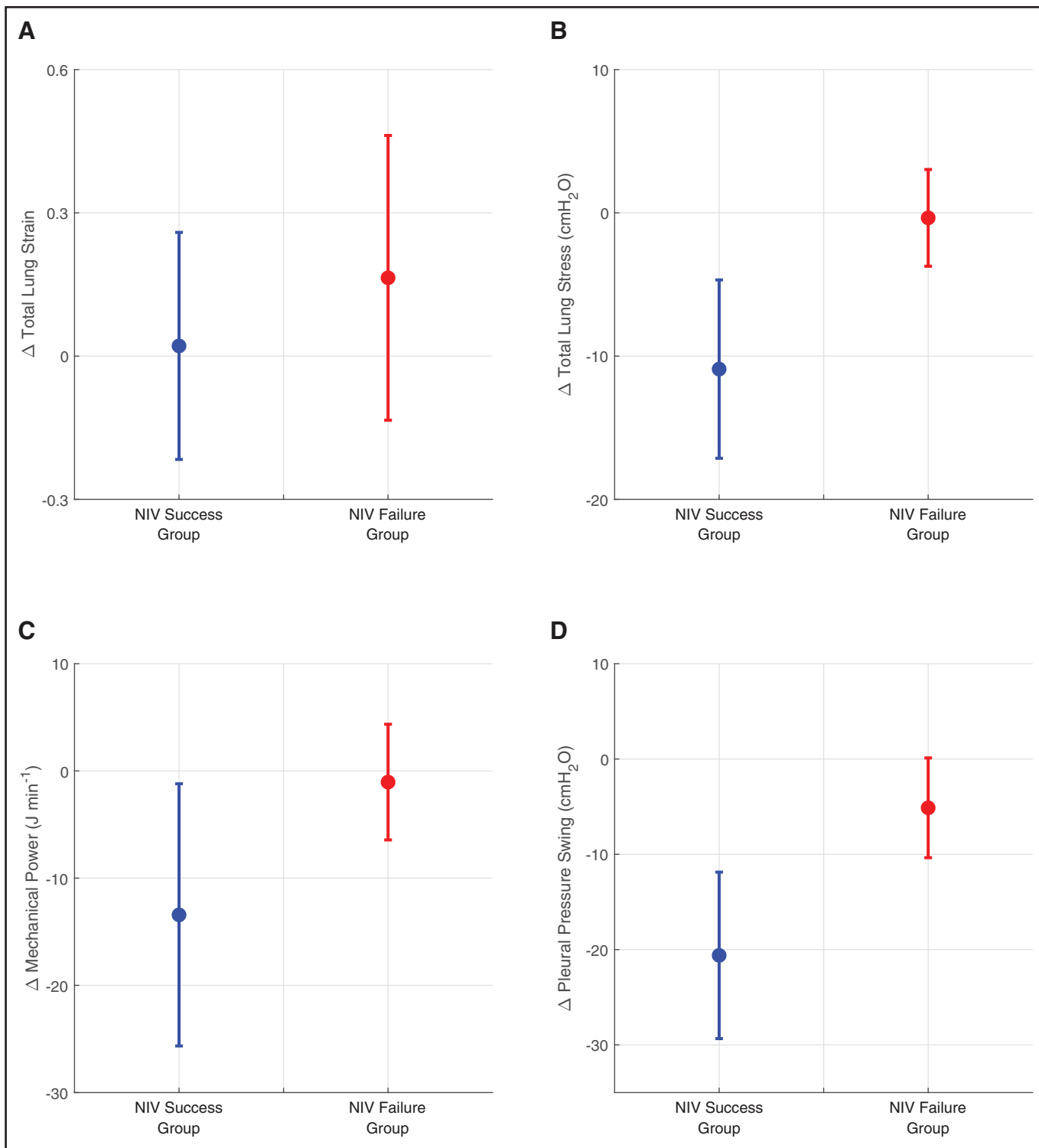


**Figure 2.** Lung injury indices on HFNC (pre-noninvasive ventilation [NIV]) and after 2 hr of the NIV trial, median, interquartile ranges, and actual ranges; total lung strain (**A**), total lung stress (**B**), mechanical power (**C**), and tidal change in pleural pressure (**D**). *Blue (red)*—digital twins of patients in which NIV succeeded (failed), *red dash*—higher risk threshold, and *yellow dash*—lower risk threshold.

positive inspiratory pressures that were sufficient to produce alveolar recruitment, with mean respiratory system compliance increasing by an average of 25.0 mL/cm H<sub>2</sub>O within 2 hours (**Fig. 4A**). In contrast, mean respiratory system compliance was effectively unchanged (+1.83 mL/

cm H<sub>2</sub>O) in the digital twins of patients that failed NIV. Improvements in lung compliance allowed for a mean reduction in inspiratory muscle pressure of 9.7 cm H<sub>2</sub>O in the NIV success group, whereas respiratory effort was unchanged or increased in the NIV failure group (**Fig. 4**).

Downloaded from <http://journals.lww.com/ccmjournal> by BMDMfsePHKav1ZcumTtQIN4akJLhEzgsIHod4XM0hCy  
wC X1AM/nY Qp/ltqH-D38D00dRy7TtVSF4C3V/C1y0abggQZxdtwHfKZBYtws= on 05/29/2024

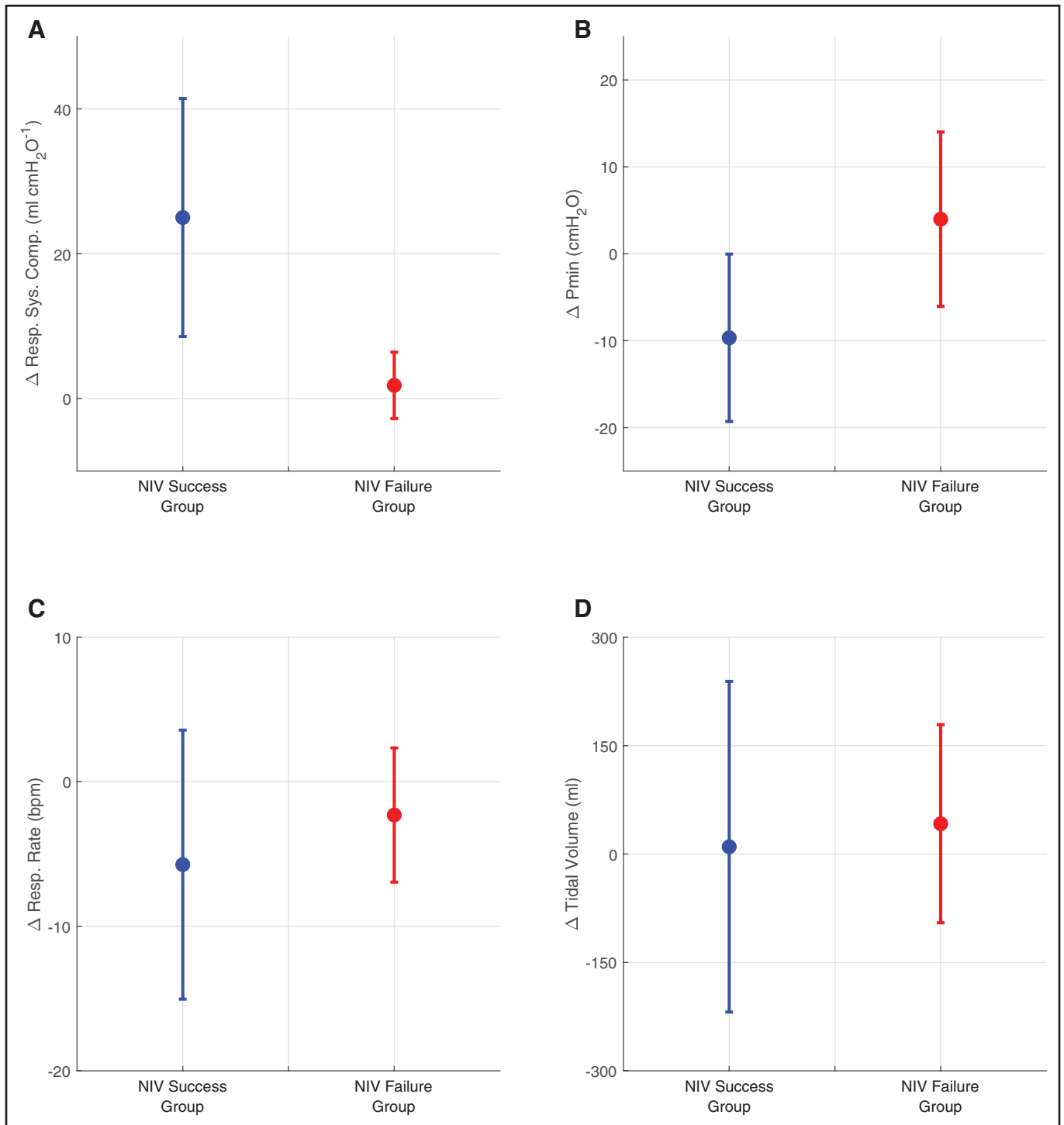


**Figure 3.** Changes in lung injury indices after 2 hr of the noninvasive ventilation (NIV) trial in digital twins of the success and failure patient subgroups; change in total lung strain (**A**), change in total lung stress (**B**), change in mechanical power (**C**), and change in tidal pleural pressure swing (**D**). Circle—mean value; whisker—sd. Change in total lung strain was not statistically significant.

### Contributions of Patient Effort and External Respiratory Support to Lung Injury Indices

The relative contributions of the patients’ spontaneous respiratory efforts and the external respiratory

support to total lung strain, total lung stress, driving pressure, and mechanical power are shown in **Figure 5**; and **Tables S15** and **S16** (<http://links.lww.com/CCM/H553>). In the digital twins of patients who were

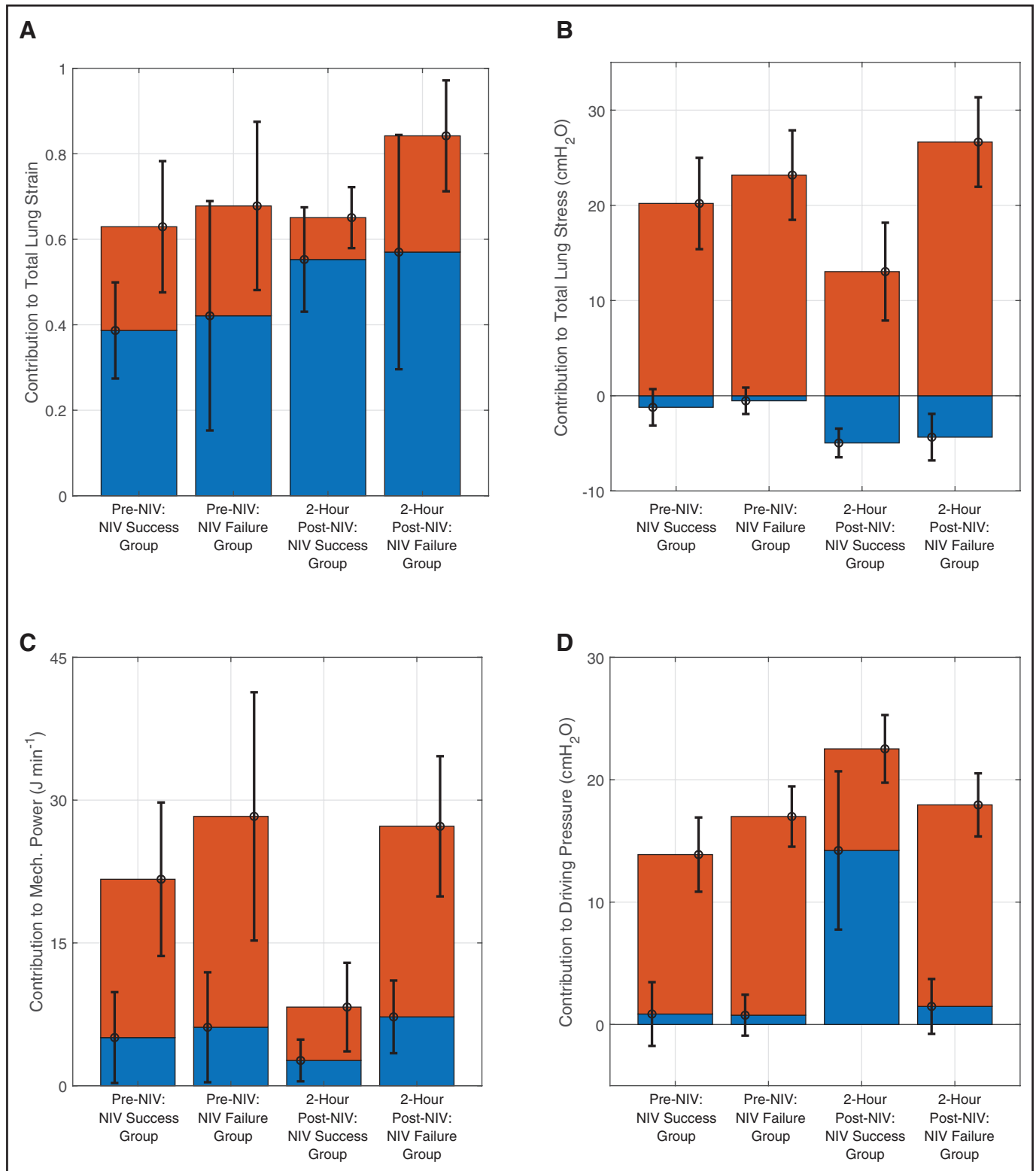


**Figure 4.** Changes in lung mechanics after 2 hr of the noninvasive ventilation (NIV) trial in digital twins of the success and failure patient subgroups; change in respiratory system compliance (**A**), change in muscular pressure (Pmin) (**B**), change in respiratory rate (**C**), and change in tidal volume (**D**). Circle—mean value; whisker—sd.

successful on NIV, large reductions were observed in the proportional contribution of spontaneous respiratory effort to total lung stress, total lung strain, mechanical power, and driving pressure. In contrast, no such reductions were observed in the digital twins of patients who failed NIV.

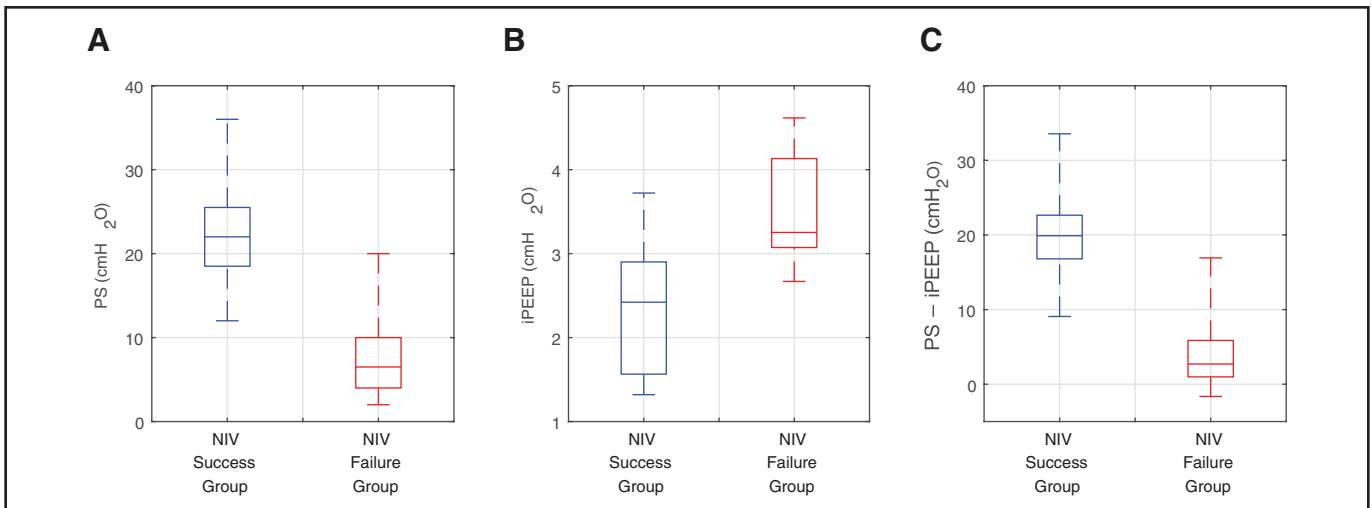
### Support Delivered by NIV in Success and Failure Groups

Mean PEEP levels were similar during NIV (8.2  $\text{cmH}_2\text{O}$ , measured in patients) and HFNC (10.8  $\text{cmH}_2\text{O}$  on 60L/min, calculated in the digital twins),



**Figure 5.** Mean contributions to lung injury indices from spontaneous respiratory effort (*red*) and external respiratory support (*blue*), with sds for each shown (*whisker*); contributions to the total lung strain (**A**), contributions to the total lung stress (**B**), contributions to the mechanical power (**C**), and contributions to the driving pressure (**D**). The sum of the *bars* is equal to the total in each case. NIV = noninvasive ventilation.





**Figure 6.** Comparison of the success and failure groups 2-hours after noninvasive ventilation (NIV) initiation; NIV inspiratory positive pressure support (PS) (A), the calculated intrinsic positive end-expiratory pressure (iPEEP) (B), and the difference between the inspiratory PS provided and the iPEEP (C).

suggesting that the primary additional support provided by NIV was the inspiratory positive PS above PEEP (mean 10 cm H<sub>2</sub>O, measured in patients). Mean PEEP settings were also similar between the NIV success and failure groups during the trial (Fig. S4, <http://links.lww.com/CCM/H553>). In contrast, mean PS was 63% lower in the failure group compared with the success group (Fig. 6A), whereas intrinsic PEEP (iPEEP), which could be measured in the digital twins, was 52% higher in the failure group, compared with the success group (Fig. 6B). As shown in Figure 6C, this led to low levels of external PS (PS–iPEEP) being delivered to many patients in the failure group. The level of PS that could be applied in the failure group was constrained by the targets set for maximum values of VT and RR—as shown in Figure S4, B and C (<http://links.lww.com/CCM/H553>), these targets are already being exceeded at the level of support provided, due to the patients' continued high respiratory efforts.

## DISCUSSION

In this study, the creation of digital twins of a cohort of AHRF patients suggests that: 1) the additional respiratory support provided to these patients by NIV as compared with HFNC was primarily due to additional positive inspiratory pressure, 2) in patients who succeeded on NIV, this positive inspiratory pressure combined with PEEP produced alveolar recruitment and improved respiratory system compliance, leading to

reduced respiratory effort, 3) the primary contribution to reductions in lung stress, strain, driving pressure, and mechanical power was due to lower patient respiratory effort, and 4) NIV failed in patients for whom only low levels of positive inspiratory PS could be applied without increasing the risk of patient self-inflicted lung injury (P-SILI) due to excessive V<sub>T</sub>s.

The significant correlation between  $\Delta P_{es}$  changes within the first 2 hours of NIV and radiographic progression at 24 hours reported in (6) suggested that P-SILI might be a potential mechanism of lung damage, which may contribute to outcome in these patients. However, the inability to measure standard indices of lung injury in these spontaneously breathing patients meant that this hypothesis could not be confirmed based on the original study data. We applied a novel methodology, based on the use of digital twins of the individual patients recruited to the study, in an attempt to “fill in the gaps” in the in vivo data.

Analysis of the data from the digital twins suggests that, before initiation of the NIV trial and when patients were receiving HFNC therapy, values of multiple indices of lung injury were at levels that would cause concern to clinicians if they could have been measured at the bedside (Fig. 2), indicating that this patient population might be at risk for failing noninvasive respiratory support due to P-SILI. This suggests that the generalized use of HFNC as a first line therapy in patients with moderate-to-severe AHRF requires continuous bedside assessment of respiratory mechanics

and/or respiratory effort (17). PEEP levels provided by HFNC have not, to date, been measured at the bedside in AHRF patients, but could easily be calculated in the digital twins, where they were found to be similar (mean 10.8 cm H<sub>2</sub>O on 60 L/min) to levels measured in patients during the NIV trial (mean 8.2 cm H<sub>2</sub>O). The values of PEEP delivered by HFNC in the digital twins are higher than previous experimental studies that measured airway pressures produced in healthy volunteers (18). One possible explanation for this is that HFNC may produce higher PEEP in the “baby lungs” of AHRF/acute respiratory distress syndrome (ARDS) patients than in healthy volunteers, although further studies are required to confirm this hypothesis. High levels of PEEP, if accompanied by continued high spontaneous respiratory effort, could have the potential to cause lung injury, highlighting the need for close monitoring of patients receiving this support.

The additional inspiratory positive airway pressure provided by NIV as compared with HFNC therapy led to improved respiratory system compliance with minimal tidal recruitment (**Fig. S5**, <http://links.lww.com/CCM/H553>) in the digital twins of the patient subgroup for which NIV was successful. This could plausibly have allowed those patients to reduce their respiratory efforts, leading to large drops in the values of multiple indices of lung injury. In contrast, in the NIV failure group, our model suggests that only low levels of positive inspiratory PS could be applied without violating the limits on V<sub>T</sub> and RR specified in the protocols for titrating the NIV settings. This level of support produced no change in compliance in the digital twins, which might have resulted in continued high respiratory efforts that, over time, could potentially lead to P-SILI.

It has been suggested previously that, in the presence of preexisting lung injury, transpulmonary pressure swings generated by elevated spontaneous respiratory efforts could be more harmful than the same swings generated via controlled mechanical ventilation (19). In the digital twins of patients receiving NIV who successfully avoided invasive mechanical ventilation, the relative contribution of spontaneous respiratory efforts to the total values of all lung injury indices was reduced.

It is of interest to note that results of this study align well with some of the proposed (but still debated) risk thresholds for the various indices of lung injury

considered (12–15), with patients who went on to succeed on NIV generally having lung injury indices below the proposed threshold and those who failed having indices above. In the case of mechanical power and  $\Delta P_{pl}$ , the effect of NIV in the digital twins of the group for which it was successful was to reduce these indices from values well above their thresholds to values at the thresholds, while total lung stress was reduced from being at its threshold to being well below it (Fig. 2). In contrast, these indices of lung injury in the digital twins of the NIV failure group remained well above the proposed safety thresholds. Total lung strain was generally below the proposed risk thresholds, but increased more in the failure group. All the proposed risk thresholds have been developed using data from intubated and mechanically ventilated animal models or patients; to our knowledge, this is the first time they have been evaluated in the context of spontaneously breathing patients receiving noninvasive respiratory support.

Our results point to a potential role for iPEEP in contributing to the success or failure of NIV in some patients with AHRF. Although more usually associated with obstructive lung diseases, values of iPEEP of over 5 cm H<sub>2</sub>O have been measured in mechanically ventilated patients with ARDS (20), and high respiratory effort (as observed in many of the patients in [6]) is well known to have the potential to cause iPEEP (21). In our study, digital twins of the patients who failed NIV had higher levels of iPEEP. This, combined with the fact that these patients received generally lower levels of PS during the trial, suggests that many of these patients could have been receiving levels of external support that were inadequate to allow them to reduce their respiratory efforts, ultimately contributing to NIV failure.

This study has limitations. The digital twins were developed based on a relatively small number of patients from a single-center study (6). Due to the difficulty in measuring many key parameters in spontaneously breathing patients, there is likely to be some “noise” in the data on which the digital twins are based. Although the digital twins show excellent fidelity/matching to the actual patient data, they remain surrogates whose outputs are estimates of the values that would be produced in real patients. However, the mechanistic computational models on which the digital twins are based have been validated in numerous previous studies ([7–11] and references therein).

## CONCLUSIONS

Analysis of additional data provided by digital twins suggests that, in a cohort of patients with moderate-to-severe AHRF who had failed HFNC therapy, early inspiratory effort relief after initiation of NIV predicts success because it reflects improved lung mechanics caused primarily by additional positive inspiratory pressure. In the digital twins, the resulting reductions in respiratory effort lowered multiple indices associated with lung injury. In digital twins of patients who failed NIV, the levels of positive inspiratory PS that could be applied without producing excessive VTs were insufficient to enable reduction in patient respiratory effort. Although challenging to achieve in clinical practice, continuous detailed monitoring of patients' respiratory efforts (perhaps with the aid of new technologies) may be the key to achieving success, and avoiding failure, in NIV.

- 1 School of Engineering, University of Warwick, Coventry, United Kingdom.
- 2 Respiratory Diseases Unit, Department of Medical and Surgical Sciences, University Hospital of Modena, University of Modena and Reggio Emilia, Modena, Italy.
- 3 Anaesthesia and Critical Care, Injury Inflammation and Recovery Sciences, School of Medicine, University of Nottingham, Nottingham, United Kingdom.
- 4 Anaesthesia and Intensive Care Medicine, Galway University Hospitals and School of Medicine, University of Galway, Galway, Ireland.
- 5 Intensive Care Medicine, Guy's and St Thomas' NHS Foundation Trust and Division of Asthma Allergy and Lung Biology, King's College London, London, United Kingdom.
- 6 Academic Department of Military Anaesthesia and Critical Care, Royal Centre for Defence Medicine, ICT Centre, Birmingham, United Kingdom.
- 7 Nottingham University Hospitals NHS Trust, Nottingham, United Kingdom.

Supplemental digital content is available for this article. Direct URL citations appear in the printed text and are provided in the HTML and PDF versions of this article on the journal's website (<http://journals.lww.com/ccmjjournal>).

Prof. Bates, Dr. Saffaran, and Mr. Weaver designed the study. Mr. Weaver was the principal modeler and created the digital twins, with significant contributions from Dr. Saffaran and Mr. Shamohammadi. Drs. Tonelli and Clini provided patient data and assisted in matching the digital twins to patient data. Drs. Tonelli, Clini, Laffey, Camporota, Laviola, Laffey, and Scott made substantial contributions to development of the digital twins, analyzed new data from simulations, and interpreted results in the context of exciting literature. Prof. Bates wrote the article. All authors reviewed and revised the article.

This research was supported by the United Kingdom Research and Innovation Engineering and Physical Sciences Research Council (Grant Ref. EP/W000490/1).

Prof. Bates received support for article research from Research Councils UK. Dr. Tonelli declared patent N. 102021000007478; he disclosed that he and his wife are co-founders of IREC (VAT 02959080355). Dr. Laviola received funding from the Lorentz Center and the Institute of Electrical and Electronics Engineers Engineering in Medicine and Biology Conference. Prof. Bates' institution received funding from Fisher & Paykel. The remaining authors have disclosed that they do not have any potential conflicts of interest.

For information regarding this article, E-mail: [enrico.clini@uni-more.it](mailto:enrico.clini@uni-more.it)

All data is available upon reasonable request to the corresponding author.

## REFERENCES

1. Grieco DL, Maggiore SM, Roca O, et al: Non-invasive ventilatory support and high-flow nasal oxygen as first-line treatment of acute hypoxemic respiratory failure and ARDS. *Intensive Care Med* 2021; 47:851–866
2. Bellani G, Laffey JG, Pham T, et al; LUNG SAFE Investigators, ESICM Trials Group. Noninvasive ventilation of patients with acute respiratory distress syndrome. Insights from the LUNG SAFE study. *Am J Respir Crit Care Med* 2017; 195:67–77
3. Battaglini D, Robba C, Ball L, et al: Non-invasive respiratory support and patient self-inflicted lung injury in COVID-19: A narrative review. *Br J Anaesth* 2021; 127:353–364
4. Grasselli G, Calfee CS, Camporota L, et al; European Society of Intensive Care Medicine Taskforce on ARDS: ESICM guidelines on acute respiratory distress syndrome: Definition, phenotyping and respiratory support strategies. *Intensive Care Med* 2023; 49:727–759
5. Venkatesh KP, Raza MM, Kvedar JC: Health digital twins as tools for precision medicine: Considerations for computation, implementation, and regulation. *NPJ Digit Med* 2022; 5:150
6. Tonelli R, Fantini R, Tabbì L, et al: Early inspiratory effort assessment by esophageal manometry predicts non-invasive ventilation outcome in de novo respiratory failure. A pilot study. *Am J Respir Crit Care Med* 2020; 202:558–567
7. Weaver L, Das A, Saffaran S, et al: High risk of patient self-inflicted lung injury in COVID-19 with frequently encountered spontaneous breathing patterns: A computational modelling study. *Ann Intensive Care* 2021; 11:109
8. Weaver L, Das A, Saffaran S, et al: Optimising respiratory support for early COVID-19 pneumonia: A computational modelling study. *Br J Anaesth* 2022; 128:1052–1058
9. Hannon DM, Mistry S, Das A, et al: Modeling mechanical ventilation in silico-potential and pitfalls. *Semin Respir Crit Care Med* 2022; 43:335–345
10. Daudre-Vignier C, Bates DG, Scott TE, et al: Evaluating current guidelines for cardiopulmonary resuscitation using an integrated computational model of the cardiopulmonary system. *Resuscitation* 2023; 186:109758

11. Saffaran S, Das A, Laffey JG, et al: Utility of driving pressure and mechanical power to guide protective ventilator settings in two cohorts of adult and pediatric patients with acute respiratory distress syndrome: A computational investigation. *Crit Care Med* 2020; 48:1001–1008
12. Romitti F, Busana M, Palumbo MM, et al: Mechanical power thresholds during mechanical ventilation: An experimental study. *Physiol Rep* 2022; 10:e15225
13. Protti A, Cressoni M, Santini A, et al: Lung stress and strain during mechanical ventilation: Any safe threshold? *Am J Respir Crit Care Med* 2011; 183:1354–1362
14. Chiumello D, Carlesso E, Cadringer P, et al: Lung stress and strain during mechanical ventilation for acute respiratory distress syndrome. *Am J Respir Crit Care Med* 2008; 178:346–355
15. Baldomero AK, Skarda PK, Marini JJ: Driving pressure: Defining the range. *Respir Care* 2019; 64:883–889
16. Bellani G, Grassi A, Sosio S, et al: Plateau and driving pressure in the presence of spontaneous breathing. *Intensive Care Med* 2019; 45:97–98
17. Menga LS, Delle Cese L, Rosà T, et al: Respective effects of helmet pressure support, continuous positive airway pressure, and nasal high-flow in hypoxemic respiratory failure: A randomized crossover clinical trial. *Am J Respir Crit Care Med* 2023; 207:1310–1323
18. Parke RL, Bloch A, McGuinness SP: Effect of very-high-flow nasal therapy on airway pressure and end-expiratory lung impedance in healthy volunteers. *Respir Care* 2015; 60:1397–1403
19. Brochard L, Slutsky A, Pesenti A: Mechanical ventilation to minimize progression of lung injury in acute respiratory failure. *Am J Respir Crit Care Med* 2017; 195:438–442
20. de Durante G, del Turco M, Rustichini L, et al: ARDSNet lower tidal volume ventilatory strategy may generate intrinsic positive end-expiratory pressure in patients with acute respiratory distress syndrome. *Am J Respir Crit Care Med* 2002; 165:1271–1274
21. Brochard L: Intrinsic (or auto-) positive end-expiratory pressure during spontaneous or assisted ventilation. *Intensive Care Med* 2002; 28:1552–1554