

Influence of Hepatitis C Coinfection and Treatment on Risk of Diabetes Mellitus in HIV-Positive Persons

Amanda Mocroft,^{1,⊕} Jens D. Lundgren,² Juergen K. Rockstroh,³ Inka Aho,⁴ Gilles Wandeler,⁵ Lars Nielsen,⁶ Simon Edwards,⁷ Jean-Paul Viard,⁸ Karine Lacombe,⁹ Gerd Fätkenheuer,¹⁰ Giovanni Guaraldi,^{11,⊕} Montserrat Laguno,¹² Josep Llibre,¹³ Hila Elinav,¹⁴ Leo Flamholz,¹⁵ Martin Gisinger,¹⁶ Dzmitry Paduta,¹⁷ Irina Khromova,¹⁸ David Jilich,¹⁹ Blazej Rozplochowski,²⁰ Cristiana Oprea,²¹ and Lars Peters¹; on behalf of the EuroSIDA study*

¹Centre for Clinical Research, Epidemiology, Modelling and Evaluation (CREME), Institute for Global Health, University College London, London, UK, ²CHIP, Rigshospitalet, Copenhagen, Denmark, ³University Hospital Bonn, Bonn, Germany, ⁴Helsinki University Hospital, Helsinki, Finland, ⁵Department of Infectious Diseases, Bern University Hospital, University of Bern, Bern, Switzerland, ⁶Nordsjællands Hospital, Hillerød, Denmark, ⁷Mortimer Market Centre, London, UK, ⁸Hôtel-Dieu, AP-HP, Paris, France, ⁹Sorbonne Université, IPLESP Inserm UMR-S1136, AP-HP, Paris, France, ¹⁰University Hospital of Cologne, Cologne, Germany, ¹¹University of Modena and Reggio Emilia, Modena, Italy, ¹²Hospital Clinic, Barcelona, Spain, ¹³University Hospital Germans Trias i Pujol, Badalona, Barcelona, Spain, ¹⁴Hadassah Hospital, Jerusalem, Israel, ¹⁵Skane University Hospital, Malmö, Sweden, ¹⁶Medical University of Innsbruck, Innsbruck, Austria, ¹⁷Gomel Regional Centre for Hygiene, Gomel, Belarus, ¹⁸Centre for HIV/AIDS & Infectious Diseases, Kaliningrad, Russia, ¹⁹Charles University in Prague and Na Bulovce Hospital, Prague, Czech Republic, ²⁰Poznan University of Medical Sciences, Poznan, Poland, and ²¹Carol Davila University of Medicine and Pharmacy, Bucharest, Romania

Background. The role of hepatitis C virus (HCV) coinfection and HCV-RNA in the development of diabetes mellitus (DM) in HIV-positive persons remains unclear.

Methods. Poisson regression was used to compare incidence rates of DM (blood glucose >11.1 mmol/L, HbA1C >6.5% or >48 mmol/mol, starting antidiabetic medicine or physician reported date of DM onset) between current HIV/HCV groups (anti-HCV-negative, spontaneously cleared HCV, chronic untreated HCV, successfully treated HCV, HCV-RNA-positive after HCV treatment).

Results. A total of 16 099 persons were included; at baseline 10 091 (62.7%) were HCV-Ab-negative, 722 (4.5%) were spontaneous clearers, 3614 (22.4%) were chronically infected, 912 (5.7%) had been successfully treated, and 760 (4.7%) were HCV-RNA-positive after treatment. During 136 084 person-years of follow-up (PYFU; median [interquartile range], 6.9 [3.6–13.2]), 1108 (6.9%) developed DM (crude incidence rate, 8.1/1000 PYFU; 95% CI, 7.7–8.6). After adjustment, there was no difference between the 5 HCV strata in incidence of DM (global $P = .33$). Hypertension (22.2%; 95% CI, 17.5%–26.2%) and body mass index >25 (22.0%; 95% CI, 10.4%–29.7%) had the largest population-attributable fractions for DM.

Conclusions. HCV coinfection and HCV cure were not associated with DM in this large study. The biggest modifiable risk factors were hypertension and obesity, and continued efforts to manage such comorbidities should be prioritized.

Keywords: diabetes mellitus; direct-acting antivirals; hepatitis C; HIV; sustained virologic response.

Hepatitis C (HCV) mono-infection has been associated with an increased risk of a wide range of extrahepatic comorbidities [1], including cardiovascular disease and chronic kidney disease [2, 3], and has also been associated with higher mortality from cardiovascular disease, cancer, and renal disease [4, 5]. Most studies have reported an increased risk of diabetes mellitus (DM) in HCV-positive vs HCV-negative individuals, with a recent meta-analysis reporting a 1.6-fold increased odds [6]. However, a large French cohort study among HIV/HCV-coinfected individuals found that DM was associated

with cirrhosis but not HCV infection per se [7], while a large US study of HCV-monoinfected persons found that DM was associated with elevated Alanine Amino Transferase (ALT) and gamma glutamyl transpeptidase (GT), but not HCV itself [8]. The introduction of direct-acting antivirals (DAAs) for the treatment of HCV has had a major impact on HCV treatment [9], with cure rates in excess of 90% in persons coinfecting with both HIV and HCV [10]. Data from the pre-DAA era of interferon-based HCV therapy have indicated that sustained virologic response (SVR) could also have indirect beneficial effects in terms of improvements in lifestyle factors, a so-called epiphany effect [11], which could also potentially impact the risk for diabetes. In studies of persons coinfecting with HCV and HIV, persons with SVR had a significantly lower incidence of DM compared with those treated for HCV without SVR [12]. A lower incidence of DM among HCV treatment responders vs nonresponders was also found in a Spanish cohort of HIV/HCV-coinfected persons [13]. Both previous studies were based on relatively few cases of DM and were conducted before the introduction of direct-acting antivirals, and therefore larger

Received 18 June 2020; editorial decision 24 September 2020; accepted 30 September 2020.

*Study members are listed in the Appendix

Correspondence: Amanda Mocroft PhD, Centre for Clinical Research, Epidemiology, Modelling and Evaluation (CREME), Institute for Global Health, UCL, Rowland Hill St, London, NW3 2PF, UK (a.mocroft@ucl.ac.uk).

Open Forum Infectious Diseases®

©The Author(s) 2020. Published by Oxford University Press on behalf of Infectious Diseases Society of America. This is an Open Access article distributed under the terms of the Creative Commons Attribution License (<http://creativecommons.org/licenses/by/4.0/>), which permits unrestricted reuse, distribution, and reproduction in any medium, provided the original work is properly cited. DOI: 10.1093/ofid/ofaa470

studies with substantial follow-up and well-defined end points are required to further understand the role of HCV on the development of DM in HIV-positive persons.

The aim of this study was therefore to investigate the incidence of DM in a large pan-European cohort study according to HCV status in HIV-coinfected persons across 5 strata: anti-HCV-negative individuals, spontaneous HCV-RNA clearers, those with chronic untreated HCV infection, those with cured HCV, or those who have been treated but remain HCV-RNA-positive.

METHODS

The EuroSIDA Study

Persons were included from the EuroSIDA study, a large prospective observational cohort of almost 23 000 HIV-1-positive patients followed in 100 hospitals in 35 European countries plus Israel and Argentina. Individuals were enrolled into 10 cohorts from 1994 onward. In cohort 10, all HIV-positive patients were also required to be positive for anti-HCV antibodies (HCV-RNA-positive, -negative, or unknown status). At recruitment, in addition to demographic and clinical data, a complete anti-retroviral therapy history was obtained, together with the most recent CD4 cell counts and HIV-RNA measurements, as well as all HCV tests, HCV-RNA, HCV genotype, hepatitis B surface antigen (HBsAg), and hepatitis B virus (HBV) DNA. Data are collected prospectively at clinical sites and sent to the coordinating center at yearly intervals. At each follow-up visit, all CD4 cell counts, HIV-RNA, HCV tests, HCV-RNA, genotype, and HBsAg results measured since last follow-up are collected, together with start and stop dates for antiretroviral drugs and HCV and HBV drugs. Detailed information about data collected in EuroSIDA can be found at <http://www.chip.dk/Ongoing-Studies/EuroSIDA/About>.

Patient Consent Statement

Informed patient consent was obtained according to local and/or national ethics committee requirements; consent was obtained from each participant before any study-related procedure was performed and in accordance with the International Conference on Harmonisation of Technical Requirements for Registration of Pharmaceuticals for Human Use (ICH) – Good Clinical Practice Guidelines. Further information is available at https://www.chip.dk/Portals/0/files/EuroSIDA/EuroSIDA/EuroSIDA_Protocol_v4_2019JULI05.pdf?ver=2019-10-02-145631-730 (ClinicalTrials.gov Identifier: NCT02699736).

Definitions

DM was defined according to laboratory values (blood glucose levels >11.1 mmol/L or HbA1C >6.5%/48 mmol/L) and/or use of antidiabetic medication. We used a blood glucose >11.1 mmol/L to be conservative, reflecting missing information on whether glucose was measured in a fasting state

or not. According to the EuroSIDA Manual of Operations, DM can be defined by sending the laboratory data, by the use of antidiabetic medication, or the site can report the clinical diagnosis based on these criteria without sending laboratory data (https://www.chip.dk/Portals/0/files/RESPOND/RESPOND%20Manual%20of%20Operations%20MOOP_Version%201.6.pdf?ver=2019-11-05-124535-643). Baseline was defined as the earliest date after cohort enrollment or January 1, 2001 (when collection of prospective information on DM began), with known HCV serostatus and, for those who were anti-HCV-positive, known HCV-RNA status. Persons aged <18 years at baseline or without a CD4 count and HIV viral load in the 12 months before or 1 month after baseline were excluded, as were persons with DM before baseline.

Based on time-updated HCV antibody tests, HCV-RNA, and HCV treatment, we defined 5 HCV groups, as previously published [14]:

1. anti-HCV-negative;
2. HCV antibody-positive, HCV-RNA-negative, untreated (spontaneous clearers);
3. HCV antibody-positive, HCV-RNA-positive, untreated (chronic infections);
4. HCV antibody-positive, HCV-RNA-negative, treated (successfully treated with any HCV therapy; cured);
5. HCV antibody-positive, HCV-RNA-positive, treated (treated, HCV-RNA positive).

These 5 strata were defined on the basis of latest anti-HCV test and HCV-RNA measurement. Those treated and HCV-RNA-positive included persons who did not achieve SVR, persons who were HCV-RNA-positive who had started treatment more recently, those reinfected with HCV, and persons without an HCV-RNA measurement after treatment completion and lacking an end-of-treatment response. Persons were followed until their last visit (median June 2018), date of death, or DM, whichever occurred first. Person-years of follow-up (PYFU) and DM events accrued according to current HCV stratum using the last observation carried forward, and persons could contribute PYFU to >1 stratum.

Statistical Analysis

Characteristics of patients were compared across strata using chi-square tests for categorical variables and the Kruskal-Wallis test for continuous data. Incidence rates of DM per 1000 PYFU were calculated within HCV groups, and Poisson regression was used to compare these rates with persons cured as the reference group. In addition to univariate analyses, we adjusted for all factors fixed at baseline (except HCV status) and all factors updated. Factors included were gender, HIV exposure group, region of Europe (North, Central West, South, Central East, East, and Argentina) [15], development of chronic kidney

disease [14], HIV viral load, prior AIDS, cumulative exposure to zidovudine, stavudine, and didanosine [16], cardiovascular disease, non-AIDS-defining malignancies (NADMs), end-stage liver disease (ESLD; ascites, hepatorenal syndrome, grade III/IV hepatic encephalopathy, unspecified liver decompensation, esophageal variceal bleeding, spontaneous bacterial peritonitis, liver transplantation, and hepatocellular carcinoma; further information about these events is available at <https://www.chip.dk/Studies/EuroSIDA/Study-documents>), smoking status (never smoked, current smoker, past smoker, unknown smoking status), hypertension [17], body mass index, CD4, nadir CD4, age, and baseline date. Liver fibrosis was defined according to our previous study [18]. In brief, data were available on all liver biopsy and Fibroscan test results performed at participating centers. Information on aspartate transaminase (AST) and platelet counts was used to calculate the AST-to-platelet ratio (APRI). Hyaluronic acid was available for a small subset. The most recent fibrosis marker measured (before baseline or time-updated) was used to define fibrosis stage, and where >1 marker was measured, priority was given to biopsy, Fibroscan, APRI, and hyaluronic acid. A priori, we investigated the interaction between age and HCV strata.

We performed a wide range of sensitivity analyses to investigate the robustness of our results to different assumptions. These included carrying the last HCV-RNA measurement forward for a maximum of 12 months, excluding persons with stage F3/F4 liver fibrosis at baseline, excluding men who have sex with men (MSM) with a more recent HCV infection, and an analysis limited to post-2014, when DAAs became more widely available for persons included in the EuroSIDA study [19]. In addition, we investigated excluding centers in EuroSIDA where the 95% CI for the center did not include the population point estimate, as incidence of DM could depend on frequency of laboratory testing within centers.

To address which risk factors have the strongest impact on the development of DM, we calculated the population-attributable risk fraction (PAF) for the key identified risk factors. PAF expresses the proportion of events that could have been avoided had that risk factor not been present and considers both the strengths of the associations and the incidence rate of the risk factor.

All analyses were performed in SAS, version 9.4 (SAS Institute, Cary, NC, USA).

RESULTS

Of 22 828 persons enrolled in the EuroSIDA study, 3948 were excluded as their HCV status and/or HCV-RNA status was unknown, 754 were excluded with DM before the study baseline, 1439 were excluded with no prospective follow-up, and 588 were excluded with missing CD4 and/or HIV viral load at baseline. Compared with the 16 099 included in these analyses,

the 2029 excluded due to no follow-up or missing CD4/viral loads were more likely to be females, be younger, have a prior AIDS diagnosis, have fibrosis stage F3/F4 at baseline, be from Central Eastern Europe, have an earlier baseline date, and be HBsAg-positive.

Characteristics of the 16 099 included individuals are shown in Table 1, stratified by HCV strata at baseline. The majority of those included were in group 1 at baseline (HCV-Ab negative; 10 091; 62.7%), followed by those in group 3 (chronically infected; $n = 3614$; 22.4%), with smaller numbers in group 2 (spontaneous clearers; $n = 722$; 4.5%), group 4 (successfully treated; $n = 912$; 5.7%), and group 5 (treated, HCV-RNA positive; $n = 760$; 4.7%). The HCV strata were heterogeneous at baseline, with a lower burden of fibrosis and of comorbidities in group 1 (HCV-Ab negative) compared with other groups. The median baseline age (interquartile range [IQR]) was 41 (35–49) years, the CD4 count (IQR) was $443/\text{mm}^3$ (288–633/ mm^3), and the baseline date (IQR) was January 2006 (January 2001–May 2012).

The median follow-up (IQR) was 6.9 (3.6–13.2) years per person. During 136 084 PYFU, 1108 developed DM, for an incidence rate of 8.14/1000 PYFU (95% CI, 7.66–8.62). Of 1108 persons with DM, 354 cases were defined using HbA1c, 628 using glucose levels, 524 with a clinical diagnosis, and 521 based on use of antidiabetic medication. These figures include 225, 176, and 114 persons who were diagnosed with DM using 2, 3, or 4 methods, respectively. The crude incidence of DM stratified by HCV strata is shown in Table 2. The crude incidence of DM was highest in persons who are HCV-Ab negative (8.66/1000 PYFU; 95% CI, 8.08–9.25) and lowest in spontaneous clearers (5.62/1000 PYFU; 95% CI, 3.61–7.63). The incidence of DM in individuals who were chronically infected, successfully treated, and treated and HCV-RNA-positive was quite similar, at around 7/1000 PYFU. In univariate analyses, there was no evidence of a difference in incidence of DM across the HCV strata compared with those who were successfully treated.

Association Between HCV Strata and Development of DM

After adjustment, there was no difference between the HCV strata and incidence of DM, as shown in Figure 1. In a model that allowed cofactors to be updated over time (Figure 1), those who were HCV-Ab-negative (adjusted incidence rate ratio [aIRR], 1.21; 95% CI, 0.88–1.66) and chronically infected (aIRR, 1.29; 95% CI, 0.94–1.77) had the highest incidence rates of DM compared with persons who had been cured, although the increased incidence was not statistically significant, and there was no evidence of an overall difference between strata (global $P = .33$). Highly consistent results were seen in a model where all cofactors except HCV strata were fixed at baseline, with no differences between HCV strata (global $P = .68$). Other factors associated with developing DM are summarized in Figure 1 and were consistent in both multivariate models.

Table 1. Characteristics at Baseline

	All		Anti-HCV-Negative				HCV Antibody-Positive					
	No.	%	Group 1		Group 2		Group 3		Group 4		Group 5	
			No.	%	No.	%	No.	%	No.	%	No.	%
All	16099	100.0	10091	62.7	722	4.5	3614	22.4	912	5.7	760	4.7
Gender												
Male	11910	74.0	7649	75.8	472	65.4	2548	70.5	679	74.5	562	73.9
Female	4189	26.0	2442	24.2	250	34.6	1066	29.5	233	25.5	198	26.1
HIV risk												
MSM	6248	38.8	5306	52.6	99	13.7	427	11.8	250	27.4	166	21.8
IDU	4026	25.0	293	2.9	411	56.9	2422	67.0	467	51.2	433	57.0
Heterosexual	4628	28.7	3770	37.4	134	18.6	498	13.8	124	13.6	102	13.4
Other	1197	7.4	722	7.2	78	10.8	267	7.4	71	7.8	59	7.8
Ethnic												
White	13743	85.4	8483	84.1	589	81.6	3291	91.1	728	79.8	652	85.8
Other	2356	14.6	1608	15.9	133	18.4	323	8.9	184	20.2	108	14.2
Region												
South	3936	24.4	2220	22.0	147	20.4	1015	28.1	259	28.4	295	38.8
Central	4336	26.9	2858	28.3	238	33.0	692	19.1	331	36.3	217	28.6
North	3451	21.4	2493	24.7	131	18.1	591	16.4	134	14.7	102	13.4
Central East	2132	13.2	1328	13.2	89	12.3	602	16.7	53	5.8	60	7.9
East	1728	10.7	763	7.6	107	14.8	652	18.0	128	14.0	78	10.3
Argentina	516	3.2	429	4.3	10	1.4	62	1.7	7	0.8	8	1.1
Negative	13555	84.2	8830	87.5	526	72.9	2834	78.4	757	83.0	608	80.0
Positive	1214	7.5	744	7.4	114	15.8	254	7.0	61	6.7	41	5.4
Unknown	1330	8.3	517	5.1	82	11.4	526	14.6	94	10.3	111	14.6
Ever cART												
No	2395	14.9	1627	16.1	80	11.1	524	14.5	88	9.6	76	10.0
Yes	13704	85.1	8464	83.9	642	88.9	3090	85.5	824	90.4	684	90.0
HIV VL												
<500	11036	68.6	6623	65.6	542	75.1	2431	67.3	795	87.2	645	84.9
>500	5063	31.4	3468	34.4	180	24.9	1183	32.7	117	12.8	115	15.1
Comorbidities												
AIDS	4089	25.4	2735	27.1	199	27.6	867	24.0	139	15.2	149	19.6
CVD	307	1.9	198	2.0	11	1.5	53	1.5	30	3.3	15	2.0
NADM	311	1.9	181	1.8	20	2.8	73	2.0	21	2.3	16	2.1
ESLD	175	1.1	45	0.4	10	1.4	66	1.8	23	2.5	31	4.1
Hypertension	3443	21.4	2233	22.1	161	22.3	635	17.6	229	25.1	185	24.3
CKD	108	0.7	34	0.3	9	1.2	32	0.9	23	2.5	10	1.3
All			Anti-HCV Negative				HCV Antibody Positive					
			Group 1		Group 2		Group 3		Group 4		Group 5	
			No.	%	No.	%	No.	%	No.	%	No.	%
			Spontaneous Clearers				Chronic Untreated Infection		Cured		Treated; HCV-RNA-Positive	
All	16099	100.0	10091	62.7	722	4.5	3614	22.4	912	5.7	760	4.7
Smoking status												
Never	4366	27.1	3462	34.3	112	15.5	635	17.6	205	22.5	137	18.0
Current	8520	52.9	4675	46.3	471	65.2	32	0.9	440	48.2	423	55.7

Table 1. Continued

	HCV Antibody-Positive												
	Anti-HCV-Negative						HCV Antibody-Positive						
	All		Group 1		Group 2		Group 3		Group 4		Group 5		
No.	%	No.	%	No.	%	No.	%	No.	%	No.	%	No.	%
Previous	1470	9.1	913	9.0	72	10.0	450	12.5	125	13.7	85	11.2	
Unknown	1743	10.8	1041	10.3	67	9.3	2511	69.5	142	15.6	115	15.1	
Fibrosis	6468	40.2	3441	34.1	434	60.1	275	7.6	584	64.0	384	50.5	
2	464	2.9	33	0.3	19	2.6	378	10.5	93	10.2	100	13.2	
3	214	1.3	12	0.1	5	0.7	1625	45.0	65	7.1	53	7.0	
4	438	2.7	35	0.3	23	3.2	219	6.1	85	9.3	113	14.9	
Unknown	8515	52.9	6570	65.1	241	33.4	79	2.2	85	9.3	110	14.5	
BMI													
≤18.5 kg/m ²	620	3.9	335	3.3	32	4.4	182	5.0	34	3.7	36	4.7	
18.5–25 kg/m ²	8108	50.4	5108	50.6	352	48.8	1509	41.8	418	45.8	333	43.8	
>25 kg/m ²	3350	20.8	2198	21.8	157	21.9	2080	57.6	201	22.0	148	19.5	
Unknown	4021	25.0	2450	24.3	180	24.9	539	14.9	259	28.4	243	32.0	
Prior HCV Treatment													
IFN + RBV	1352	80.9							713	78.2	639	84.1	
DAA + IFN	177	10.6							106	11.6	71	9.3	
DAA only	280	16.7							179	19.6	101	13.3	
Age, y													
Median	41		41		42		40		48		47		
IQR	35–49		34–49		36–50		34–45		39–53		40–53		
CD4, /mm ³	443	288–633	437	287–618	460	291–672	410	258–610	543	369–773	550	372–754	
Nadir CD4, /mm ³	180	73–291	180	71–293	164	57–288	172	76–285	190	78–292	199	102–300	
Baseline, mm/yy	01/06	01/01–05/12	01/04	01/01–07/08	03/14	03/02–02/15	02/08	01/01–11/14	01/15	10/14–07/15	12/14	09/14–05/15	

Baseline was defined as the latest of January 1, 2001, enrollment to EuroSIDA, known HCV antibody status, and, for those who were HCV antibody-positive, known HCV-RNA status. Spontaneous clearers (HCV antibody-positive, HCV-RNA-negative, untreated); chronic untreated infection (HCV antibody-positive, HCV-RNA-positive, untreated); cured (HCV antibody-positive, HCV-RNA-negative, treated); treated, HCV-RNA-positive (HCV antibody-positive, HCV-RNA-positive, treated). Six hundred twenty-nine persons (45/27/197/177/183 groups 1–5, respectively) had fibrosis defined by biopsy. 1327 (102/71/537/339/278) using Fibroscan, 4807 (3089/285/961/304/168) using APRI, and 821 (285/98/410/7/21) using hyaluronic acid. All comparisons across strata had a P value < .0001 except prior NADM (P = .33), prior CVD (P = .0079), and HCV treatment with IFN + RBV (P = .0023), with DAA + IFN (P = .13) and DAA only (P = .0005).

Abbreviations: BMI, body mass index; cART, combination antiretroviral therapy; CKD, chronic kidney disease; CVD, cardiovascular disease; DAA, direct-acting antivirals; ESLD, end-stage liver disease; HCV, hepatitis C virus; IDU, intravenous drug user; IFN, interferon; IQR, interquartile range; MSM, men who have sex with men; NADM, non-AIDS-defining malignancy; RBV, ribavirin; VL, viral load.

Table 2. Crude Incidence Rates of DM Stratified by Current HCV Strata

	HCV-Ab Status	HCV-RNA	HCV Treatment	Events	PYFU	Rate/1000 PYFU	95% CI	Crude IRR	95% CI	P
Total				1108	136084	8.14	7.66–8.62			
Group 1	Negative	n/a	n/a	843	97330	8.66	8.08–9.25	1.19	0.95–1.53	.19
Group 2	Positive	Negative	Untreated	30	5342	5.62	3.61–7.63	0.77	0.50–1.19	.24
Group 3	Positive	Positive	Untreated	134	19501	6.87	5.71–8.03	0.94	0.70–1.27	.69
Group 4	Positive	Negative	Treated	64	8765	7.30	5.51–9.09	1.00	-	
Group 5	Positive	Positive	Treated	37	5147	7.19	4.87–9.51	0.98	0.66–1.48	.94

Abbreviations: DM, diabetes mellitus; HCV, hepatitis C virus; IRR, incidence rate ratio; PYFU, person-years of follow-up.

HCV strata^a

- Group 1 (HCV-Ab negative)
- Group 2 (spontaneous clearers)
- Group 3 (chronically infected)
- Group 4 (successfully treated)
- Group 5 (treated, HCV-RNA+)

Age (per 10 years older)

Non-White (vs White)

AIDS¹ (yes vs no)

Cardiovascular disease^a (yes vs no)

Non-AIDS malignancies^a (yes vs no)

End-stage liver disease^a (yes vs no)

Hypertension^a (yes vs no)

Liver fibrosis^a (F4 vs F0/F1)

Body mass index^a (>25 vs ≤18)

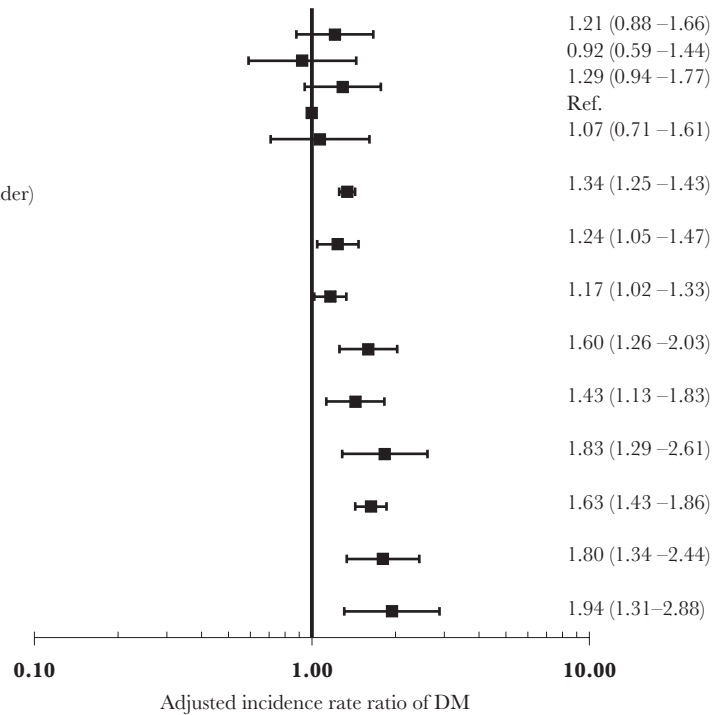


Figure 1. Factors associated with incidence of diabetes mellitus. Adjusted for factors shown and gender, HIV transmission risk group, nadir CD4, baseline date, glucose and HbA1C levels (as fixed values at baseline), HBsAg, cumulative exposure to zidovudine, stavudine, and didanosine, HIV viral load, CD4, smoking, chronic kidney disease as time-updated. ^aIncluded as time-updated variables. DM was defined as either blood glucose >11.1 mmol/L, HbA1C >6.5%, or >48 mmol/mol, starting antidiabetic medicine, or physician-reported date of DM onset. Abbreviations: DM, diabetes mellitus; HCV, hepatitis C virus.

The strongest factors associated with the development of DM were increasing age, development of cardiovascular disease (CVD), NADM, ESLD, hypertension, a high body mass index (BMI), and stage 4 liver fibrosis. There was a nonsignificantly increased incidence of DM associated with stage 2 (aIRR, 1.24; 95% CI, 0.86–1.78) or stage 3 liver fibrosis (aIRR, 1.32; 95% CI, 0.85–2.06) compared with stage 0/1 after adjustment. Our results were consistent across all our sensitivity analyses, including carrying the last HCV-RNA measurement forward for a maximum of 12 months, adjusting for starting integrase inhibitors, excluding MSM from analyses with more recent HCV infection, excluding persons with stage F3/F4 liver fibrosis at baseline, an analysis limited to post-2014, and excluding centers in EuroSIDA where the 95% CI for the center did not include the population point estimate (data not shown).

The association between HCV strata and DM differed for those aged ≤40 and those aged >40 ($P_{\text{interaction}} = .0060$). This is summarized in Figure 2. In persons aged ≤40 years, those who were chronically infected had a similar incidence of DM compared with those who had been cured (aIRR, 0.97; 95% CI, 0.59–1.60), while in persons aged >40, there was a significantly increased incidence of DM in those who were chronically infected compared with individuals who had been cured (aIRR, 1.51; 95% CI, 1.01–2.26).

Population-Attributable Fractions for Modifiable and Nonmodifiable Risk Factors Associated With DM

The PAFs for key factors associated with DM are shown in Figure 3. The largest PAF was associated with development of hypertension, where an estimated 22.2% (95% CI, 17.5%–26.2%) of DM diagnoses could have been avoided if persons were not hypertensive. A BMI of >25 contributed 22.0% of DM cases (95% CI, 10.4%–29.7%). Comorbidities, including AIDS, ESLD, NADM, CVD, and stage F4 liver fibrosis, all contributed small but significant PAFs of ~2%–5%. Aging, a nonmodifiable risk factor, also contributed large PAFs, particularly among those aged 40–60 years. PAFs for HCV strata were not calculated, as there was no evidence of an association between HCV strata and development of DM.

Restricting the PAF analysis to those with chronic HCV infection and those treated for HCV (groups 3–5), the PAF for cirrhosis was 10.1% (95% CI, 6.2%–12.8%). The PAFs for the other factors were similar to the overall analysis except for a decreased contribution due to age >50 years (Supplementary Figure 1).

DISCUSSION

This large cohort study is one of the largest to date of HIV/HCV-coinfected persons including >16 000 persons and 136 000 PYFU. We found no difference in the rates of DM

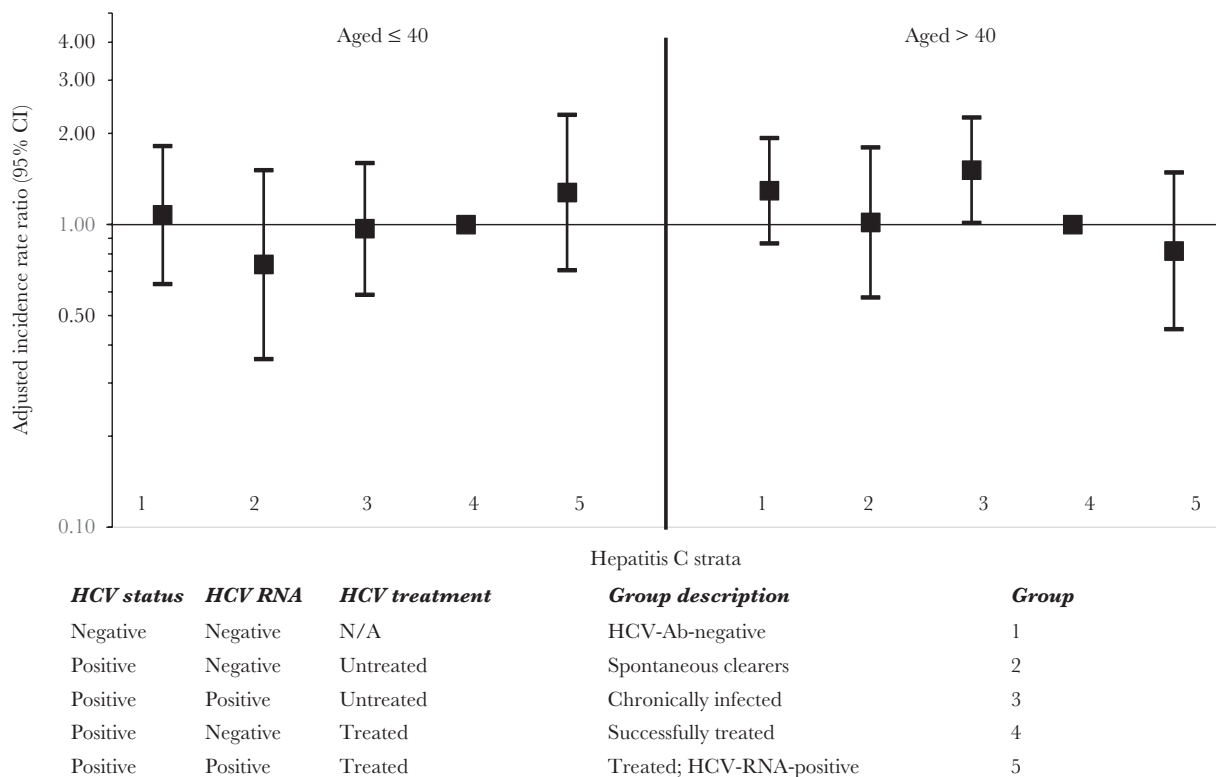


Figure 2. Multivariate incidence rate ratios of diabetes mellitus: Stratification by age. Adjusted for factors shown and gender, ethnic origin, HIV transmission risk group, region, nadir CD4, baseline date, glucose and HbA1C levels (as fixed values at baseline), HBsAg, cumulative exposure to zidovudine, stavudine, and didanosine, HIV viral load, CD4, smoking, AIDS, cardiovascular disease, non-AIDS-defining malignancies, end-stage liver disease, hypertension, liver fibrosis, chronic kidney disease, and body mass index as time-updated. DM was defined as either blood glucose >11.1 mmol/L, HbA1C >6.5%, or >48 mmol/mol, starting antidiabetic medicine, or physician-reported date of DM onset. Abbreviations: DM, diabetes mellitus; HCV, hepatitis C virus.

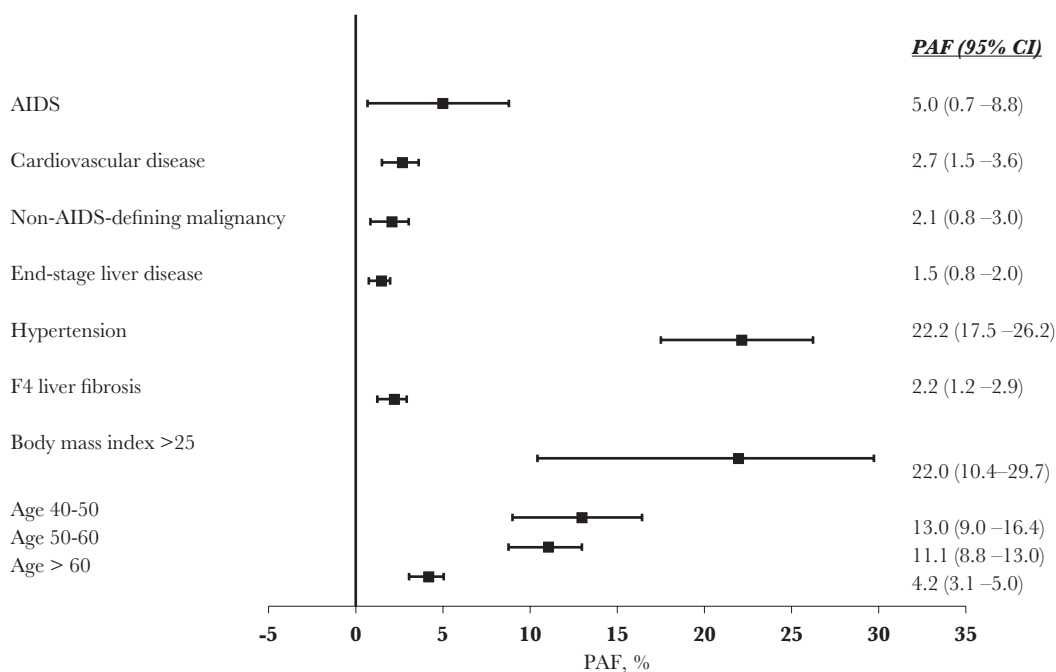


Figure 3. Population-attributable fractions for diabetes mellitus. Adjusted for gender, ethnic origin, HIV transmission risk group, region, nadir CD4, baseline date, glucose and HbA1C levels (as fixed values at baseline), HCV strata, HBsAg, cumulative exposure to zidovudine, stavudine, and didanosine, HIV viral load, CD4, smoking, AIDS, cardiovascular disease, non-AIDS-defining malignancies, end-stage liver disease, hypertension, liver fibrosis, chronic kidney disease, and body mass index as time-updated. DM was defined as either blood glucose >11.1 mmol/L, HbA1C >6.5%, or >48 mmol/mol, starting antidiabetic medicine, or physician-reported date of DM onset. Abbreviations: DM, diabetes mellitus; HCV, hepatitis C virus; PAF, population-attributable fraction.

between well-defined HCV strata including chronic and cured HCV. Traditional DM risk factors, such as age, hypertension, and obesity were much stronger predictive factors of DM than HCV status and whether someone with chronic HCV infection had been successfully treated.

We found no overall differences in the incidence of DM regarding the presence of replicating HCV infection across the HCV strata we included, and this was consistent across the different sensitivity analyses. Data from a smaller cohort study including 95 DM cases in persons with and without SVR from Berenguer et al. found a ~50% reduction in DM in those with SVR compared with those without SVR after interferon (IFN) therapy [13]. Data from the Swiss HIV Cohort Study including ~200 patients with DM found no increased incidence of DM comparing HCV-Ab-positive with HCV-Ab-negative individuals, while a comparison of HCV-Ab-positive individuals with and without SVR after IFN therapy suggested a lower incidence of DM in those with SVR, albeit with very wide confidence intervals [12]. Possible reasons for the discrepancies include differences in the populations included, that DM may develop over months or years with active HCV replication, and that a much longer follow-up period is required to observe differences, as well as differences in a study's ability to adjust for important risk factors for DM, such as body mass index and hypertension, as we were able to in this analysis.

In a preplanned analysis, we found that the association between HCV strata and DM differed in those aged ≤ 40 compared with those aged >40 years. In persons aged >40 years, where the greatest burden from DM typically occurs, those with chronic untreated HCV had a significantly higher incidence of DM after adjustment compared with those who had been treated, regardless of whether the individual had cleared HCV-RNA or remained HCV-RNA-positive. Modifiable risk factors for DM, such as increasing weight and hypertension, should be closely monitored as persons age, and interventions should be targeted at those at greatest risk, such as those aged >40 years. The higher rate of DM in chronically infected persons aged >40 years may reflect a longer duration of HCV infection in older persons, which we were unable to adjust for. Our findings of lower rates of DM in individuals treated for HCV aged ≥ 40 years, regardless of response to treatment, could partly be explained by confounding by indication or more speculatively by improvement in lifestyle factors among those treated, described as either the "epiphany" effect [11] or the "Hawthorne" effect [20]. Further, DAA treatment in EuroSIDA began to increase most notably around 2015 [19]; before this, it is likely that the healthiest persons with lower rates of advanced fibrosis/cirrhosis and those most likely to respond to treatment were selected for interferon and ribavirin treatment with its known toxicities and limited treatment responses [21]. This channeling bias might partly explain lower rates in those treated with pegylated interferon/ribavirin than those with chronic untreated infection. Further

studies focused on persons exposed to DAAs are needed to explore this association further.

Aging, hypertension, and obesity were all associated with the development of DM in our study, as previously reported and summarized by others [16, 22–24]. Smoking was not associated with development of DM, as previously reported by the D:A:D study [16]. We also found that HIV-associated comorbidities, including AIDS, non-AIDS-defining malignancies, and cardiovascular disease, were all associated with an increased incidence of DM. The association between incidence of DM and both malignancies and cardiovascular disease is likely to be explained by sharing risk factors. We have adjusted for some, such as BMI, hypertension, and aging, but there are likely to be other risk factors in common, such as physical inactivity and poor diet, that we were not able to adjust for [25]. While each of these HIV-associated comorbidities was significantly associated with DM, the PAFs were small, indicating that although they were risk factors, their underlying prevalence was low.

Whereas we did not find an association between incidence of DM and HCV infection per se, both liver cirrhosis and ESLD were associated with increased incidence of DM. These findings indicate an indirect role of HCV in increasing the risk of DM and are in agreement with findings from another recent large French cohort study of HIV/HCV-coinfected persons [7]. The liver plays a central role in the homeostasis of blood glucose levels through glycogenolysis and gluconeogenesis, although an impairment severe enough to translate into diabetes could probably only be seen in advanced or late-stage HCV-induced liver disease. The exact mechanisms through which liver cirrhosis can lead to DM are not well defined, but there is growing evidence that both insulin resistance and β -cell dysfunction contribute [26]. Even with a positive association with liver fibrosis and ESLD, the PAF was small due to the comparatively low prevalence of F4 fibrosis and ESLD among our population. In an analysis restricted to those with either chronic HCV infection or treated HCV infection, the PAF due to cirrhosis was 10%, with lifestyle factors such as increased BMI and hypertension being more important. Despite the comparatively low PAF due to cirrhosis, it remains important to diagnose and treat HCV early to reduce the risk of DM and other complications, as well as to achieve the global elimination of HCV [27]. Among the modifiable risk factors, hypertension and obesity were associated with the largest PAFs in our population. Traditional interventions used to reduce such risk factors in the general population may need modification to improve outcomes in adults with HIV in order to have a substantial impact [28]. Our results do, however, highlight the role of traditional risk factors for DM and the importance of screening and managing such risk factors.

The limitations of this study should be noted. We are not able to distinguish between type 1 and type 2 DM and used a variety of measures to define DM, reflecting heterogeneity in

data collected across Europe. We focused our analyses on DM and have no data on insulin resistance, which may be associated with HCV and precede DM [29], possibly due to impaired pancreatic beta cells in HCV-positive individuals [30]. We have no information on duration of HCV infection and used the last HCV-RNA carried forward in our analysis. Where this was negative after HCV treatment we assumed SVR, consistent with our previous work [14]. As with many observational studies, our inclusion and exclusion criteria for these analyses excluded a significant proportion of persons, and there was variability in completeness of data. Using time-updated analyses and last observation carried forward includes data measured after baseline; for example, the proportion with missing data on fibrosis stage declined to 12.7% over time, of which the majority of missing data (88.8%) was among those who were anti-HCV-negative. Despite these limitations, our results were consistent across all our sensitivity analyses. We were not able to specifically address the role of DAAs in our HCV-treated groups due to limited follow-up after DAA initiation. The strength of our study is that it is one of the largest of coinfecting persons reported to date, with an extensive quality assurance and data monitoring program.

In conclusion, HCV coinfection and cure of chronic HCV, mainly with DAAs, were not associated with the development of DM in this large cohort study, and there were few differences in DM across the 5 well-defined HCV strata included in this large study. The biggest modifiable risk factors of DM were hypertension and obesity, and continued efforts to manage such comorbidities should be prioritized.

Appendix

The EuroSIDA study group. The multicenter study group EuroSIDA (national coordinators in parentheses).

Albania: (A Harxhi), University Hospital Center of Tirana, Tirana. **Argentina:** (M Losso), M Kundro, Hospital JM Ramos Mejia, Buenos Aires. **Austria:** (B Schmied), Otto Wagner Hospital, Vienna; R Zangerle, Medical University Innsbruck, Innsbruck. **Belarus:** (I Karpov), A Vassilenko, Belarus State Medical University, Minsk; VM Mitsura, Gomel State Medical University, Gomel; D Paduto, Regional AIDS Centre, Svetlogorsk. **Belgium:** (N Clumeck), S De Wit, M Delforge, Saint-Pierre Hospital, Brussels; E Florence, Institute of Tropical Medicine, Antwerp; L Vandekerckhove, University Ziekenhuis Gent, Gent. **Bosnia-Herzegovina:** (V Hadziosmanovic), Klinicki Centar Univerziteta Sarajevo, Sarajevo. **Croatia:** (J Begovac), University Hospital of Infectious Diseases, Zagreb. **Czech Republic:** (L Machala), D Jilich, Faculty Hospital Bulovka, Prague; D Sedlacek, Charles University Hospital, Plzen. **Denmark:** G Kronborg, T Benfield, Hvidovre Hospital, Copenhagen; J Gerstoft, T Katzenstein, Rigshospitalet, Copenhagen; C Pedersen, IS Johansen, Odense University Hospital, Odense; L Ostergaard, Skejby Hospital, Aarhus, L Wiese, NF Moller, Sjællands Universitetshospital, Roskilde; L N Nielsen, Hillerød Hospital, Hillerød. **Estonia:** (K Zilmer), West-Tallinn Central Hospital, Tallinn; Jelena Smidt, Nakkusosakond Sisekliinik, Kohtla-Järve. **Finland:** (I Aho), Helsinki University Hospital, Helsinki. **France:** (J-P Viard), Hôtel-Dieu, Paris; P-M Girard, Hospital Saint-Antoine, Paris; C Pradier, E Fontas, Hôpital de l'Archet, Nice; C Duvivier, Hôpital Necker-Enfants Malades, Paris. **Germany:** (J Rockstroh), Universitäts Klinik Bonn; G Behrens, Medizinische Hochschule Hannover; O Degen, University Medical Center Hamburg-Eppendorf, Infectious Diseases Unit, Hamburg; HJ Stellbrink, IPM Study Center, Hamburg; C Stefan, JW Goethe University Hospital, Frankfurt; J Bogner, Medizinische Poliklinik, Munich;

G. Fätkenheuer, Universität Köln, Cologne. **Georgia:** (N Chkhartishvili) Infectious Diseases, AIDS & Clinical Immunology Research Center, Tbilisi. **Greece:** (H Sambatakou), Ippokraton General Hospital, Athens; G Adamis, N Paissios, Athens General Hospital "G Gennimatas," Athens. **Hungary:** (J Szilávik), South-Pest Hospital Centre-National Institute for Infectology and Haematology, Budapest. **Iceland:** (M Gottfredsson), Landspítali University Hospital, Reykjavík. **Ireland:** (C Kelly), St. James's Hospital, Dublin. **Israel:** (L Tau), D Turner, M Burke, Ichilov Hospital, Tel Aviv; E Shahar, G Hassoun, Rambam Medical Center, Haifa; H Elinav, M Haouzi, Hadassah University Hospital, Jerusalem; D Elbirt, AIDS Center (Neve Or), Jerusalem. **Italy:** (A D'Arminio Monforte), Istituto Di Clinica Malattie Infettive e Tropicale, Milan; R Esposito, I Mazeu, C Mussini, Università Modena, Modena; F Mazzotta, A Gabbuti, Ospedale S Maria Annunziata, Firenze; A Lazzarin, A Castagna, N Gianotti, Ospedale San Raffaele, Milan; M Galli, A Ridolfo, Osp. L. Sacco, Milan. **Lithuania:** (V Uzdaviniene) Vilnius University Hospital Santaros Klinikos, Vilnius; R Matulionyte, Centro poliklinika, Vilnius, Vilnius University Hospital Santaros Klinikos, Vilnius. **Luxembourg:** (T Staub), R Hemmer, Centre Hospitalier, Luxembourg. **Montenegro:** (S Dragas), M Stevanovic, Clinical Center of Montenegro, Podgorica. **Netherlands:** (P Reiss), Academisch Medisch Centrum bij de Universiteit van Amsterdam, Amsterdam. **North Macedonia:** (J Trajanovska), University Clinic for Infectious Diseases & Febrile Conditions, Mother Teresa 17, Skopje. **Norway:** (DH Reikvam), A Maeland, J Bruun, Oslo University Hospital, Ullevaal. **Poland:** (B Knysz), J Gasiorowski, M Ingot, Medical University, Wrocław; E Bakowska, Centrum Diagnostyki i Terapii AIDS, Warsaw; R Flisiak, A Grzeszczuk, Medical University, Białystok; M Parczewski, K Maciejewska, B Aksak-Was, Medical University, Szczecin; M Beniowski, E Mularska, Osrodek Diagnostyki i Terapii AIDS, Chorzów; E Jablonowska, J Kamerys, K Wojcik, Wojewodzki Szpital Specjalistyczny, Łódź; I Mozer-Lisewska, B Rozplochowski, Poznan University of Medical Sciences, Poznan. **Portugal:** (A Zagalo), Hospital Santa Maria, Lisbon; K Mansinho, Hospital de Egas Moniz, Lisbon; F Maltez, Hospital Curry Cabral, Lisbon. **Romania:** (R Radoi), C Oprea, Carol Davila University of Medicine and Pharmacy Bucharest, Victor Babes Clinical Hospital for Infectious and Tropical Diseases, Bucharest. **Russia:** A Yakovlev, Medical Academy Botkin Hospital, St Petersburg; T Trofimova, Novgorod Centre for AIDS, Novgorod, I Khromova, Centre for HIV/AIDS & Infectious Diseases, Kaliningrad; E Kuzovatova, Nizhny Novgorod Scientific and Research Institute of Epidemiology and Microbiology named after Academician I.N. Blokhina, Nizhny Novgorod; E Borodulina, E Vdoushkina, Samara State Medical University, Samara. **Serbia:** (J Ranin), The Institute for Infectious and Tropical Diseases, Belgrade. **Slovenia:** (J Tomazic), University Clinical Centre Ljubljana, Ljubljana. **Spain:** (JM Miro), JM Miró, M. Laguno, E. Martinez, F. Garcia, JL Blanco, M. Martinez-Rebollar, J. Mallolas, P Callau, J Rojas, A Inciarta, Hospital Clinic-IDIBAPS University of Barcelona, Barcelona; S Moreno, S. del Campo, Hospital Ramon y Cajal, Madrid; B Clotet, A Jou, R Paredes, J Puig, JM Llibre, JR Santos, Infectious Diseases Unit & IrsiCaixa AIDS Research Institute, Hospital Germans Trias i Pujol, Badalona; P Domingo, M Gutierrez, G Mateo, MA Sambeat, Hospital Sant Pau, Barcelona; JM Laporte, Hospital Universitario de Alava, Vitoria-Gasteiz. **Sweden:** (K Falconer), A Thalme, A Sonnerborg, Karolinska University Hospital, Stockholm; CJ Treutiger, Venhälsan-Sodersjukhuset, Stockholm; L Flamholc, Malmö University Hospital, Malmö. **Switzerland:** (A Scherrer), R Weber, University Hospital Zurich; M Cavassini, University Hospital Lausanne; A Calmy, University Hospital Geneva; H Furrer, University Hospital Bern; M Battegay, University Hospital Basel; P Schmid, Cantonal Hospital St. Gallen. **Ukraine:** A Kuznetsova, Kharkov State Medical University, Kharkov; J Mikhaliuk, Crimean Republican AIDS centre, Simferopol; M Sluzhynska, Lviv Regional HIV/AIDS Prevention and Control CTR, Lviv. **United Kingdom:** A Milinkovic, St. Stephen's Clinic, Chelsea and Westminster Hospital, London; AM Johnson, E Simons, S Edwards, Mortimer Market Centre, London; A Phillips, MA Johnson, A Mocroft, Royal Free and University College Medical School, London (Royal Free Campus); C Orkin, Royal London Hospital, London; A Winston, Imperial College School of Medicine at St. Mary's, London; A Clarke, Royal Sussex County Hospital, Brighton; C Leen, Western General Hospital, Edinburgh.

The following centers have previously contributed data to EuroSIDA. Medical University, Gdansk, Poland; Infectious Diseases Hospital, Sofia, Bulgaria; Hôpital de la Croix Rousse, Lyon, France; Hôpital de la Pitié-Salpêtrière, Paris, France; Unité INSERM, Bordeaux, France; Hôpital Edouard Herriot, Lyon, France; Bernhard Nocht Institut für Tropenmedizin, Hamburg, Germany; 1st I.K.A Hospital of Athens, Athens, Greece; Ospedale Riuniti, Divisione Malattie Infettive, Bergamo, Italy; Ospedale di Bolzano, Divisione Malattie Infettive, Bolzano, Italy; Ospedale Cotugno, III Divisione Malattie Infettive, Napoli, Italy; Dérier Hospital, Bratislava, Slovakia Hospital Carlos III, Departamento de Enfermedades Infecciosas, Madrid, Spain; Kiev Centre for AIDS, Kiev, Ukraine Luhansk State Medical University, Luhansk, Ukraine; Odessa Region AIDS Center, Odessa, Ukraine; St Petersburg AIDS Centre, St Peterburg, Russia; Infectology Centre of Latvia, Riga, Latvia University di Roma la Sapienza, Rome, Italy; Istituto Nazionale Malattie Infettive Lazzaro Spallanzani, Rome, Italy.

EuroSIDA Steering Committee. Steering Committee: I Karpov, M Losso, J Lundgren, J Rockstroh, I Aho, LD Rasmussen, V Svedhem, G Wandeler, C Pradier, N Chkhartishvili, R Matulionyte, C Oprea, JD Kowalska, J Begovac, JM Miró, G Guaraldi, R Paredes; **Chair:** G Wandeler **Co-Chair:** R Paredes; **Study lead:** A Mocroft.

EuroSIDA staff. Coordinating Centre Staff: O Kirk, L Peters, A Bojesen, D Raben, EV Hansen, D Kristensen, JF Larsen, AH Fischer; **Statistical Staff:** A Mocroft, A Phillips, A Cozzi-Lepri, S Amele, A Pelchen-Matthews, A Roen.

Supplementary Data

Supplementary materials are available at *Open Forum Infectious Diseases online*. Consisting of data provided by the authors to benefit the reader, the posted materials are not copyedited and are the sole responsibility of the authors, so questions or comments should be addressed to the corresponding author.

Acknowledgments

Financial support. EuroSIDA was supported by the European Union's Seventh Framework Programme for research, technological development, and demonstration under EuroCoord grant agreement No. 260694. Current support includes unrestricted grants by ViiV Healthcare LLC, GlaxoSmithKline R&D Limited, Janssen Scientific Affairs, Janssen R&D, Bristol-Myers Squibb Company, Merck Sharp & Dohme Corp, and Gilead Sciences. The participation of centers from Switzerland was supported by the Swiss National Science Foundation (grant No. 148522). The study is also supported by a grant (grant No. DNR126) from the Danish National Research Foundation and by the International Cohort Consortium of Infectious Disease (RESPOND).

Potential conflicts of interest. A.M. has received travel support, honoraria, and consultancy fees from ViiV, Gilead, and Eiland and Bonnin PC. J.K.R. has received personal fees from Gilead, Janssen, Merck, Theratechnologies, and ViiV. I.A. has received personal fees from GSK, Gilead, and Merck. J.D.L., G.W., L.N., S.E., J.V., K.L., G.F., G.G., M.L., J.L., H.E., L.F., M.G., D.P., I.K., D.J., B.R., C.O., and L.P. report no conflicts of interest. All authors have submitted the ICMJE Form for Disclosure of Potential Conflicts of Interest. Conflicts that the editors consider relevant to the content of the manuscript have been disclosed.

Prior presentation. This work has been presented in part at the 2019 European Association for the Study of the Liver (abstract 911); 10–14 April 2019; Vienna, Italy.

References

- Cacoub P, Gragnani L, Comarmond C, Zignego AL. Extrahepatic manifestations of chronic hepatitis C virus infection. *Dig Liver Dis* **2014**; 46(Suppl 5):S165–73.
- Butt AA, Xiaoqiang W, Budoff M, et al. Hepatitis C virus infection and the risk of coronary disease. *Clin Infect Dis* **2009**; 49:225–32.
- Dalrymple LS, Koepsell T, Sampson J, et al. Hepatitis C virus infection and the prevalence of renal insufficiency. *Clin J Am Soc Nephrol* **2007**; 2:715–21.
- Uto H, Stuver SO, Hayashi K, et al. Increased rate of death related to presence of viremia among hepatitis C virus antibody-positive subjects in a community-based cohort study. *Hepatology* **2009**; 50:393–9.
- Lee MH, Yang HI, Lu SN, et al; R.E.V.E.A.L.-HCV Study Group. Chronic hepatitis C virus infection increases mortality from hepatic and extrahepatic diseases: a community-based long-term prospective study. *J Infect Dis* **2012**; 206:469–77.
- Younossi Z, Park H, Henry L, et al. Extrahepatic manifestations of hepatitis C: a meta-analysis of prevalence, quality of life, and economic burden. *Gastroenterology* **2016**; 150:1599–608.
- Provoost A, Dramé M, Cotte L, et al; DatAIDS study group. Risk of diabetes in HIV-infected patients is associated with cirrhosis but not with chronic HCV coinfection in a French nationwide HIV cohort. *Aliment Pharmacol Ther* **2018**; 48:281–9.
- Ruhl CE, Menke A, Cowie CC, Everhart JE. Relationship of hepatitis C virus infection with diabetes in the U.S. population. *Hepatology* **2014**; 60:1139–49.
- Bertino G, Ardiri A, Proiti M, et al. Chronic hepatitis C: this and the new era of treatment. *World J Hepatol* **2016**; 8:92–106.
- Schlabe S, Rockstroh JK. Advances in the treatment of HIV/HCV coinfection in adults. *Expert Opin Pharmacother* **2018**; 19:49–64.
- Innes HA, McDonald SA, Dillon JF, et al. Toward a more complete understanding of the association between a hepatitis C sustained viral response and cause-specific outcomes. *Hepatology* **2015**; 62:355–64.
- Kovari H, Rauch A, Kouyos R, et al; Swiss HIV Cohort Study. Hepatitis C infection and the risk of non-liver-related morbidity and mortality in HIV-infected persons in the Swiss HIV Cohort Study. *Clin Infect Dis* **2017**; 64:490–7.
- Berenguer J, Rodríguez-Castellano E, Carrero A, et al; GESIDA HIV/HCV Cohort Study Group. Eradication of hepatitis C virus and non-liver-related non-acquired immune deficiency syndrome-related events in human immunodeficiency virus/hepatitis C virus coinfection. *Hepatology* **2017**; 66:344–56.
- Mocroft A, Lundgren J, Gerstoft J, et al; EuroSIDA Study. Clinical outcomes in persons coinfecting with human immunodeficiency virus and hepatitis C virus: impact of hepatitis C virus treatment. *Clin Infect Dis* **2020**; 70:2131–40.
- Laut K, Shepherd L, Radoi R, et al. Persistent disparities in antiretroviral treatment (ART) coverage and virological suppression across Europe, 2004 to 2015. *Euro Surveill* **2018**; 23:1700382.
- De Wit S, Sabin CA, Weber R, et al; Data Collection on Adverse Events of Anti-HIV Drugs (D:A:D) study. Incidence and risk factors for new-onset diabetes in HIV-infected patients: the Data Collection on Adverse Events of Anti-HIV Drugs (D:A:D) study. *Diabetes Care* **2008**; 31:1224–9.
- Mocroft A, Reiss P, Gasiorowski J, et al; EuroSIDA Study Group. Serious fatal and nonfatal non-AIDS-defining illnesses in Europe. *J Acquir Immune Defic Syndr* **2010**; 55:262–70.
- Grint D, Peters L, Rockstroh JK, et al; EuroSIDA in EuroCoord. Liver-related death among HIV/hepatitis C virus-co-infected individuals: implications for the era of directly acting antivirals. *AIDS* **2015**; 29:1205–15.
- Peters L, Laut K, Resnati C, et al; EuroSIDA Study Group. Uptake of hepatitis C virus treatment in HIV/hepatitis C virus-coinfected patients across Europe in the era of direct-acting antivirals. *AIDS* **2018**; 32:1995–2004.
- Sedgwick P, Greenwood N. Understanding the Hawthorne effect. *BMJ* **2015**; 351:h4672.
- Moradpour D, Penin F, Rice CM. Replication of hepatitis C virus. *Nat Rev Microbiol* **2007**; 5:453–63.
- Monroe AK, Glesby MJ, Brown TT. Diagnosing and managing diabetes in HIV-infected patients: current concepts. *Clin Infect Dis* **2015**; 60:453–62.
- Nansseu JR, Bigna JJ, Kaze AD, Noubiap JJ. Incidence and risk factors for prediabetes and diabetes mellitus among HIV-infected adults on antiretroviral therapy: a systematic review and meta-analysis. *Epidemiology* **2018**; 29:431–41.
- Petoumenos K, Worm SW, Fontas E, et al; D:A:D Study Group. Predicting the short-term risk of diabetes in HIV-positive patients: the Data Collection on Adverse Events of Anti-HIV Drugs (D:A:D) study. *J Int AIDS Soc* **2012**; 15:17426.
- Chatterjee S, Khunti K, Davies MJ. Type 2 diabetes. *Lancet* **2017**; 389:2239–51.
- Orsi E, Grancini V, Menini S, et al. Hepatogenous diabetes: is it time to separate it from type 2 diabetes? *Liver Int* **2017**; 37:950–62.
- WHO. Global Hepatitis Report, 2017. Geneva: World Health Organization; **2017**.
- Althoff KN, Gebo KA, Moore RD, et al; North American AIDS Cohort Collaboration on Research and Design. Contributions of traditional and HIV-related risk factors on non-AIDS-defining cancer, myocardial infarction, and end-stage liver and renal diseases in adults with HIV in the USA and Canada: a collaboration of cohort studies. *Lancet HIV* **2019**; 6:e93–104.
- Shawky MA, Mohammed AQ, Hassan AM, et al. Insulin resistance in nondiabetic Egyptian patients with chronic hepatitis C virus. *Rev Gastroenterol Mex* **2020**; 85:173–9.
- Chen J, Wang F, Zhou Y, et al. Chronic hepatitis C virus infection impairs insulin secretion by regulation of p38delta MAPK-dependent exocytosis in pancreatic beta-cells. *Clin Sci* **2020**; 134:529–42.