

# Chronic Liver Enzyme Elevation and Use of Contemporary ARVs Among People With HIV

Ashley O. Roen,<sup>1,9</sup> Lars Peters,<sup>2</sup> Gilles Wandeler,<sup>3,9</sup> Marc van der Valk,<sup>4,5</sup> Robert Zangerle,<sup>6</sup> Huldrych F. Günthard,<sup>7,8</sup> Ferdinand Wit,<sup>9</sup> Cristina Mussini,<sup>10</sup> Stéphane De Wit,<sup>11</sup> Antonella d'Arminio Monforte,<sup>12</sup> Jörg Janne Vehreschild,<sup>13</sup> Antonella Castagna,<sup>14</sup> Nadine Jaschinski,<sup>2</sup> Vani Vannappagari,<sup>15</sup> Linda Chen,<sup>16</sup> Joan Tallada,<sup>17</sup> John C'mar,<sup>18</sup> Amanda Mocroft,<sup>1,2</sup> and Lene Ryom<sup>2,19,20</sup>

<sup>1</sup>Institute for Global Health, University College London, London, UK, <sup>2</sup>CHIP, Rigshospitalet, University of Copenhagen, Copenhagen, Denmark, <sup>3</sup>Department of Infectious Diseases, Bern University Hospital, University of Bern, Bern, Switzerland, <sup>4</sup>Stichting HIV Monitoring Amsterdam, Amsterdam, The Netherlands, <sup>5</sup>Amsterdam University Medical Centers, University of Amsterdam, Division of Infectious Diseases, and Amsterdam Institute for Infection and Immunity, Amsterdam, The Netherlands, <sup>6</sup>Austrian HIV Cohort Study (AHIVCOS), Medizinische Universität Innsbruck, Innsbruck, Austria, <sup>7</sup>Department of Infectious Diseases and Hospital Epidemiology, University Hospital Zurich, Zurich, Switzerland, <sup>8</sup>Institute of Medical Virology, University of Zurich, Zurich, Switzerland, <sup>9</sup>AIDS Therapy Evaluation in the Netherlands (ATHENA) Cohort, HIV Monitoring Foundation, Amsterdam, The Netherlands, <sup>10</sup>Modena HIV Cohort, Università degli Studi di Modena, Modena, Italy, <sup>11</sup>CHU Saint-Pierre, Centre de Recherche en Maladies Infectieuses a.s.b.l., Brussels, Belgium, <sup>12</sup>Italian Cohort Naive Antiretrovirals (ICONA), ASST Santi Paolo e Carlo, Milano, Italy, <sup>13</sup>University Hospital Cologne, Cologne, Germany, <sup>14</sup>San Raffaele Scientific Institute, Università Vita-Salute San Raffaele, Milano, Italy, <sup>15</sup>ViiV Healthcare, Research Triangle Park, North Carolina, USA, <sup>16</sup>Gilead Science, Foster City, California, USA, <sup>17</sup>European AIDS Treatment Group, Brussels, Belgium, <sup>18</sup>MSD, North Wales, Pennsylvania, USA, <sup>19</sup>Department of Infectious Diseases 144, Hvidovre University Hospital, Copenhagen, Denmark, and <sup>20</sup>Department of Clinical Medicine, University of Copenhagen, Copenhagen, Denmark

**Background.** While use of some older antiretroviral drugs (ARVs) is associated with chronic liver enzyme elevation (cLEE), the impact of newer ARVs remains unknown.

**Methods.** People with HIV enrolled in the RESPOND cohort who started an ARV after January 1, 2012 were included (baseline). The primary outcome was first cLEE individuals were censored at first of cLEE, last visit, death, or December 31, 2021. Incidence rates (IRs; events/1000 person-years) were calculated for each ARV overall and by ARV exposure (6–12 months, 1–2 years, and 2+ years). Poisson regression was used to estimate the incidence rate ratio (IRR) of cLEE and its association with individual ARVs and ARV class.

**Results.** Of 17 106 individuals included contributing 87 924 person-years of follow-up, 1932 (11.3%) experienced cLEE (incidence rate [IR], 22.0; 95% CI, 21.0–23.0). There was no evidence of a cumulative ARV effect on cLEE incidence, (6–12 months: IR, 45.8; 95% CI, 41.4–50.19; 1–2 years: IR, 34.3; 95% CI, 31.5–37.4; and 2+ years: IR, 18.5; 95% CI, 17.4–19.7). Any use (vs no prior use) of non-nucleoside reverse transcriptase inhibitors (NNRTIs) as a class and tenofovir disoproxil fumarate (TDF) was independently associated with an increased IRR of cLEE, and any use of darunavir (DRV) was associated with a decreased risk of cLEE.

**Conclusions.** cLEE is common and more frequent during the first year after initiating new ARVs. With a >5-year median follow-up, we found no short-term liver safety concerns with the use of INSTIs. Use of NNRTIs and TDF was associated with an increased cLEE risk, while DRV was associated with lower risk.

**Keywords.** HIV; Chronic liver enzyme elevation (cLEE); HCV; ART.

Although life expectancy has greatly increased for people with HIV, there remains a large difference in comorbidity-free years, where people with HIV mono-infection in the Western setting have an estimated 16.3 fewer healthy years [1] with a greater comorbidity burden [2] than HIV-negative individuals. Liver disease is common among people with HIV in Western settings, and although it has been declining in recent years, it accounts for 13%–18% of all-cause mortality and remains a leading cause of

non-AIDS-related deaths [3–6]. This could be attributed to coinfection with viral hepatitis C (HCV) or hepatitis B (HBV), substance abuse, nodular regenerative hyperplasia, and nonalcoholic fatty liver disease [7, 8]. Poorly controlled HIV infection has also been shown to be an independent risk factor of liver fibrosis [9].

Chronic liver enzyme elevation (elevations in transaminases as a marker for hepatocyte turnover) is common in people with HIV with and without HCV/HBV coinfection [10–13], yet the clinical significance remains unclear due to lack of longer-term follow-up in many studies, particularly for newer antiretroviral drugs (ARVs) including integrase strand inhibitors (INSTIs). Most research on liver enzyme elevation in people with HIV has focused on acute liver injury, where liver enzyme elevation is elevated 3–5 times the upper limit of normal (ULN) [14–17]. Limited data are available on the risk of developing chronic moderate alanine aminotransferase (ALT) elevations among those prescribed newer ARVs with or without coinfections. Previous analyses from the large Data Collection on Adverse

Received 08 May 2024; editorial decision 28 May 2024; accepted 05 June 2024; published online 8 June 2024

Correspondence: Ashley O. Roen, PhD, Centre for Clinical Research, Epidemiology, Modelling and Evaluation (CREME), Institute for Global Health, University College London, Rowland Hill St, London NW3 2PF (a.roen@ucl.ac.uk).

Open Forum Infectious Diseases®

© The Author(s) 2024. Published by Oxford University Press on behalf of Infectious Diseases Society of America. This is an Open Access article distributed under the terms of the Creative Commons Attribution License (<https://creativecommons.org/licenses/by/4.0/>), which permits unrestricted reuse, distribution, and reproduction in any medium, provided the original work is properly cited.

<https://doi.org/10.1093/ofid/ofae308>

Events of Anti-HIV Drugs (D:A:D) Study reported that cumulative exposure to the older ARVs stavudine, didanosine, and amprenavir, and also to TDF, regardless of viral hepatitis status, were associated with chronic liver enzyme (transaminase) elevation (cLEE), end-stage liver disease (ESLD), and hepatocellular carcinoma [18], while other studies have found no such association [19, 20]. These studies were published during the beginning of the INSTIs era and did not investigate association with INSTIs. Data from the US military HIV Natural History Study (NHS) among 2779 military beneficiaries not coinfecting with HCV/HBV suggest that INSTI-based regimens could be protective against cLEE [21].

Here we aim to identify risk factors associated with cLEE, focusing on commonly prescribed ARVs in RESPOND, namely INSTIs (dolutegravir [DTG], raltegravir [RAL], cobicistat boosted elvitegravir [EVG/c], and bictegravir [BIC]), protease inhibitors (PIs; boosted darunavir [DRV/b] and atazanavir [ATV/b]), non-nucleoside reverse transcriptase inhibitors (NNRTIs; rilpivirine [RPV] and efavirenz [EFV]), and backbone nucleoside reverse transcriptase inhibitors (NRTIs) that have been associated with liver impairment (tenofovir disoproxil fumarate [TDF]) and ALT normalization (tenofovir alafenamide [TAF]) [22].

## METHODS

### Data

The International Cohort Consortium of Infectious Diseases (RESPOND) is a cohort collaboration of ~39 000 people with HIV among 19 cohorts from Europe and Australia, as described elsewhere [23]. Briefly, participating cohorts collect standardized HIV data from clinical visits, which are annually sent to the central coordinating center using the HIV Cohorts Data Exchange Protocol (HICDEP) where data are centrally validated. More information can be found at <https://www.chip.dk/Studies/RESPOND>. For this analysis and consistent with RESPOND guidelines for study inclusion, we included cohorts where  $\geq 70\%$  of the individuals under follow-up had  $\geq 1$  ALT measurement per year for the duration of the study period as these are cohorts with adequate data quality for our outcome of interest.

### Definitions

Baseline was defined as the date of initiation of a new ARV after January 1, 2012, to which individuals had not been previously exposed. As described above, the ARVs considered were INSTIs (DTG, RAL, EVG/c, BIC); PIs (DRV/b and ATV/b), NNRTIs (RPV and EFV), and backbone NRTIs (TDF and TAF). In an intention-to-treat approach, individuals were followed up until the first of cLEE (defined below), date of last visit, death, or December 31, 2022 (administrative censoring date).

Individuals were classified as having cLEE using the definition outlined by D:A:D in previous studies [24], namely by chronic ALT elevations greater than the ULN (males and females  $>50$ ,  $>35$  U/L, respectively) at  $\geq 2$  visits spanning at least 6 months and within 2 years, allowing for 1 normal value in between 2 elevated values. The first elevated ALT date after 6 months was used as the event date, as done previously [24].

Individuals were included if they had an HIV-RNA, CD4, and ALT measurement in the year preceding baseline and all ALT measurements in the year preceding baseline were normal (ALT  $<$  ULN), with at least 2 ALT measurements within 2 years of baseline.

### Statistical Analysis

Baseline characteristics of age, sex, ethnic origin, HIV transmission risk group, geographical region of care, calendar year, alcohol use, smoking status, ARV status (starting ART from a treatment-naïve or -experienced state), use of individual ARVs (as prespecified above), CD4 nadir, baseline HIV-RNA (taken in the year preceding baseline), HBV and HCV status, diabetes, body mass index (BMI), prior cLEE, and ESLD were described as numbers and percentages for categorical variables or medians and interquartile range (IQR) for continuous variables and stratified by whether the individual developed cLEE. Positive HCV status was defined by use of anti-HCV medication, a positive HCV antibody test, a positive HCV-RNA qualitative test, HCV-RNA  $>615$  IU/mL, and/or a positive genotype test. Positive HBV status was defined by a positive HBV surface antigen test and/or HBV-DNA  $>357$  IU/mL, and dyslipidemia was defined as random total cholesterol  $\geq 240$  mg/dL, high-density lipoprotein (HDL)  $<35$  mg/dL, triglyceride  $\geq 200$  mg/dL, or initiation of lipid-lowering therapy. Diabetes was defined as blood glucose levels  $>7$  mmol/L (126 mg/dL) or HbA1C  $>6.5\%$  (48 mmol/L) and use of antidiabetic treatment. ESLD was defined as clinical symptoms of end-stage liver failure in participants with chronic liver disease, based on the diagnosis documented in a clinical note of (a) endoscopically verified bleeding from gastric or esophageal varices; (b) hepatic encephalopathy stage III or IV; (c) hepatorenal syndrome; or (d) ascites; and a pathology report or fibro-scan report documenting advanced liver fibrosis or cirrhosis or liver transplantation. Sex/gender, ethnic origin/race, alcohol use and smoking status were self-reported.

Incidence rates (IRs; events/1000 person-years) and 95% CIs of cLEE were estimated for individual drugs and by main drug classes among the drugs in the prespecified list. Incidence rates were also estimated by time from initiating each drug of interest to ascertain if there was a cumulative association with longer drug exposure. We investigated the exposure categories 6–12 months, 1–2 years, and 2+ years (note: 0–6 months does not apply as per the definition of cLEE).

Poisson regression was used to estimate the incident rate ratio (IRR) of cLEE and its association with individual ARVs (compared with those not initiating the drug of interest), adjusting for prespecified key factors of baseline viral hepatitis status (positive, negative, or unknown), nadir CD4 at baseline ( $<350$ ,  $350\text{--}500$ ,  $\geq 500$  cells/mm<sup>3</sup>), and HIV-RNA at baseline ( $<200$ ,  $\geq 200$  copies/mL). Additional baseline risk factors for cLEE were univariably assessed, and those with  $P < .1$  were included in multivariable models (final variable selection in results). Factors in multivariable models with  $P > .1$  were omitted from the final multivariable model using backwards elimination. Variables removed were then one at a time included, and those with  $P < .1$  were kept in the final model. Confounders investigated were age (continuous), sex/gender, ethnic origin/race (White, Black, other, unknown), HIV transmission risk group (men who have sex with men [MSM], injection drug users [IDUs], heterosexual contact, other, and unknown), geographical region (Western Europe + Australia, Southern Europe, Northern Europe, or Eastern Europe), calendar year (categorical), dyslipidemia (random total cholesterol  $>240$  mg/dL, HDL  $<35$  mg/dL, triglycerides  $>200$  mg/dL, or initiation of lipid-lowering therapy), diabetes mellitus status, BMI ( $<25$ ,  $\geq 25$ , missing), and smoking status (current, prior, none, unknown). Robust standard errors were used to account for over- and underdispersion. In order to have adequate power (type I and II error rates of 0.05 and 0.2, respectively) to detect an IRR of  $\geq 1.4$  with 1932 events, we needed a follow-up ratio of 4.96 between the drug of interest and all other drugs as defined by Schoenfeld [25, 26].

We conducted multiple sensitivity analyses. First, we investigated an on-treatment approach, censoring at 90 days after any drug switch (to allow for a washout period). We also stratified the analysis by baseline viral hepatitis status, and we limited the analysis to those who were ART-naïve before baseline. To try and account for possible confounders for starting INSTIs, we adjusted for prior AIDS, tuberculosis (TB) diagnoses, and cardiovascular disease (CVD). And finally, any drugs we found to be associated with cLEE (NNRTIs [EFV, RPV] and TDF) were investigated individually among those not concomitantly prescribed the other drugs associated with cLEE (eg, EFV without concomitant prescriptions for RPV or TDF). This allowed us to see if the associations were truly independent or driven by 1 drug. DRV/b was examined without a concomitant prescription for TDF to examine if its protective effect was independent from TDF. All sensitivity analyses had fewer events than the main analysis, so only drugs with the power to detect an IRR of  $\geq 1.4$  were investigated, as in the main analysis described above.

Among those who developed cLEE, we defined severity per the AIDS Clinical Trial Group [27]: Below Grade 1:  $>ULN\text{--}1.25\times ULN$ ; Grade 1:  $1.25\text{--}2.5\times ULN$ ; Grade 2:  $2.5\text{--}5\times ULN$ ; Grade 3:  $5\text{--}10\times ULN$  or Grade 4  $>10\times ULN$ .

All analyses were performed using Stata/SE 18.0 from StataCorp LLC (College Station, TX, USA).

## Patient Consent

Participants consented to share data with RESPOND according to local requirements. Participants were pseudonymized at enrollment by assignment of a unique identifier by the participating cohort before data transfer to the main RESPOND database. All cohorts have approval to share data with RESPOND according to national and local requirements. Ethical approval was obtained, if required, from the relevant bodies for collection and sharing of data. Data are stored on secure servers at the RESPOND coordinating center in Copenhagen, Denmark, in accordance with current legislation and under approval by The Danish Data Protection Agency (approval number 2012-58-0004, RH-2018-15, January 26, 2018), under the EU General Data Protection Regulation (2016/679).

## RESULTS

Of 26 998 individuals in RESPOND among the 16 eligible cohorts who began a new ARV after 2012, we made the following exclusions. A total of 1521 were missing CD4 or HIV-RNA measurements in the year preceding baseline, 6140 had an abnormal ALT in the year preceding baseline, 1891 were missing an ALT measurement in the year preceding baseline, and 340 of the remaining individuals did not have ALT measurements taken after baseline (Supplementary Figure 1). Baseline characteristics of those included compared with those excluded were similar, apart from geographical region of care, where those included tended to be more likely to receive care in Western and Southern Europe and less likely to receive care in Northern and Eastern Europe (Supplementary Table 1).

A total of 17 106 individuals were included in the analysis, of whom 1932 (11.3%) went on to develop cLEE during 87 924 person-years of follow-up (PYFU), with a median follow-up (IQR) of 5.17 (2.97–7.22) per person, giving an IR of 22.0/1000 PYFU (95% CI, 21.0–23.0). Individuals included were mostly male (76%), White (71%), and MSM (49%) (Table 1). A little over 30% of individuals were ARV-naïve before baseline. The median follow-up for those who developed cLEE (IQR) was 2.2 (1.1–4.1) vs 5.5 (3.5–7.4) years in those without cLEE. Compared with those who did not develop cLEE during follow-up, those who developed cLEE were slightly more likely to be HCV- and/or HBV-positive at baseline (20.7% vs 18.5%), to have previously had cLEE at least 1 year before baseline (24% vs 14%), and had a slightly higher median ALT (IQR) at baseline (28 [22–35] vs 23 [17–30]).

## Cumulative Use of Antiretroviral Drugs and IRs of cLEE

There was no evidence of a cumulative association between longer ARV use and cLEE incidence for any of the considered ARVs. Overall, the cLEE IR was highest in the first 6–12 months post-new ARV initiation (IR, 45.9/1000 PYFU; 95% CI, 41.4–50.7) and declined thereafter (IR, 34.3/1000 PYFU; 95% CI,

**Table 1. Baseline Characteristics of Individuals Who Did and Did Not Develop Chronic Liver Enzyme Elevation After Initiating a New ARV to Which They Have Not Been Exposed Previously**

|  |                           | Total  |             | No cLEE |           | cLEE   |             |
|--|---------------------------|--------|-------------|---------|-----------|--------|-------------|
|  |                           | No.    | %           | No.     | %         | No.    | %           |
| Gender                                       | Male                      | 13 018 | 76.1        | 11 576  | 76.3      | 1442   | 74.6        |
| ...  | Female                    | 4046   | 23.7        | 3560    | 25.2      | 486    | 25.2        |
| ...  | Nonmale/female or unknown | 42     | 0.2         | 38      | 0.2       | 4      | 0.2         |
| HIV risk                                     | MSM                       | 8346   | 48.8        | 10 673  | 73.3      | 1417   | 73.3        |
| ...  | IDU                       | 1686   | 9.9         | 2192    | 10.2      | 198    | 10.2        |
| ...  | Heterosexual              | 6019   | 35.2        | 662     | 6.1       | 118    | 6.1         |
| ...  | Other                     | 395    | 2.3         | 1647    | 10.3      | 199    | 10.3        |
| ...  | Unknown                   | 660    | 3.9         | 7416    | 48.1      | 930    | 48.1        |
| Ethnic origin                                | White                     | 12 090 | 70.7        | 1476    | 10.9      | 210    | 10.9        |
| ...  | Black                     | 2390   | 14          | 5334    | 35.5      | 685    | 35.5        |
| ...  | Other                     | 780    | 4.6         | 359     | 1.9       | 36     | 1.9         |
| ...  | Unknown                   | 1846   | 10.8        | 589     | 3.7       | 71     | 3.7         |
| Geographical region                          | Western Europe            | 9534   | 55.7        | 8459    | 55.6      | 1075   | 55.6        |
| ...  | Southern Europe           | 3664   | 21.4        | 3303    | 18.7      | 361    | 18.7        |
| ...  | Northern Europe           | 1969   | 11.5        | 1724    | 12.7      | 245    | 12.7        |
| ...  | Eastern Europe            | 1939   | 11.3        | 1688    | 13        | 251    | 13          |
| ART starting year                            | 2012/2013                 | 3743   | 21.9        | 3104    | 33.1      | 639    | 33.1        |
| ...  | 2014/2015                 | 4935   | 28.9        | 3497    | 32.5      | 627    | 32.5        |
| ...  | 2016/2017                 | 4794   | 28.1        | 7680    | 33        | 636    | 33          |
| ...  | 2018/2019                 | 2483   | 14.5        | 7909    | 29        | 559    | 29          |
| ...  | 2020/2021                 | 995    | 5.8         | 4361    | 22.4      | 433    | 22.4        |
| ART class                                    | <i>INSTI</i>              | 9116   | 53.3        | 8185    | 53.9      | 931    | 48.2        |
| ...  | DTG                       | 5041   | 29.5        | 4552    | 30        | 489    | 25.3        |
| ...  | EVG/c                     | 1747   | 10.2        | 1557    | 10.3      | 190    | 9.8         |
| ...  | RAL                       | 1437   | 8.4         | 1223    | 8.1       | 214    | 11.1        |
| ...  | <i>NNRTI</i>              | 3504   | 20.5        | 3021    | 19.9      | 483    | 25          |
| ...  | EFV                       | 882    | 5.2         | 735     | 4.8       | 147    | 7.6         |
| ...  | RPV                       | 2623   | 15.3        | 2287    | 15.1      | 336    | 17.4        |
| ...  | <i>NRTI</i>               | 8369   | 48.9        | 7470    | 49.2      | 899    | 46.5        |
| ...  | TAF                       | 4287   | 25.1        | 3977    | 26.2      | 310    | 16          |
| ...  | TDF                       | 4184   | 24.5        | 3585    | 23.6      | 599    | 31          |
| ...  | <i>PI</i>                 | 3191   | 18.7        | 2783    | 18.3      | 408    | 21.1        |
| ...  | DRV/b                     | 2623   | 15.3        | 2307    | 15.2      | 316    | 16.4        |
| ...  | ATV                       | 569    | 3.3         | 477     | 3.1       | 92     | 4.8         |
| ART-naive <sup>a</sup>                       | ...                       | 5271   | 30.8        | 4672    | 30.8      | 599    | 31          |
| HCV/HBV-positive <sup>a</sup>                | ...                       | 3201   | 18.7        | 2802    | 18.5      | 399    | 20.7        |
| HCV-positive <sup>a</sup>                    | ...                       | 2665   | 15.6        | 2330    | 15.4      | 335    | 17.3        |
| HBV-positive <sup>a</sup>                    | ...                       | 678    | 4           | 593     | 3.9       | 85     | 4.4         |
| Prior cLEE <sup>a</sup>                      | ...                       | 2544   | 14.9        | 2081    | 13.7      | 463    | 24          |
| Diabetes diagnosis before start <sup>a</sup> | ...                       | 641    | 3.7         | 555     | 3.7       | 86     | 4.5         |
| ESLD diagnosis before start <sup>a</sup>     | ...                       | 73     | 0.4         | 64      | 0.4       | 9      | 0.5         |
| ...  | ...                       | Median | IQR         | Median  | IQR       | Median | IQR         |
| Age <sup>a</sup>                             | ...                       | 47     | (38–55)     | 47      | (38–55)   | 45     | (37–53)     |
| CD4 nadir <sup>a</sup>                       | ...                       | 235    | (113–362)   | 236     | (114–363) | 227    | (109–356)   |
| Baseline RNA <sup>a</sup>                    | ...                       | 1.6    | (1.3–4.1)   | 1.6     | (1.3–3.9) | 1.6    | (1.3–4.2)   |
| Follow-up years                              | ...                       | 5.17   | (2.97–7.22) | 5.5     | (3.5–7.4) | 2.20   | (1.14–4.07) |
| ALT <sup>a</sup>                             | ...                       | 23     | (18–30)     | 23      | (17–30)   | 28     | (22–35)     |

Western Europe: Austria, Belgium, France, Germany, Luxembourg, Switzerland. Southern Europe: Argentina, Greece, Israel, Italy, Portugal, Spain. Northern Europe: Denmark, Finland, Iceland, Ireland, Australia, Netherlands, Norway, Sweden, United Kingdom. Eastern Europe: Albania, Belarus, Estonia, Georgia, Latvia, Lithuania, Russia, Ukraine, North Macedonia, Bosnia-Herzegovina, Croatia, Czech Republic, Hungary, Poland, Romania, Serbia, Slovenia, Slovakia.

Abbreviations: ALT, alanine transaminase; ATV, atazanavir; cLEE, chronic liver enzyme elevation; DRV/b, darunavir; DTG, dolutegravir; EFV, efavirenz; EVG/c, elvitegravir; ESLD, end-stage liver disease; HBV, hepatitis B; HCV, hepatitis C; IDU, injection drug use; INSTI, integrase strand transfer inhibitor; IQR, interquartile range; MSM, men who have sex with men; NNRTI, non-nucleoside reverse transcriptase inhibitor; NRTI, nucleoside reverse transcriptase inhibitor; PI, protease inhibitor; RAL, raltegravir; RPV, rilpivirine; TAF, tenofovir; TDF, tenofovir disoproxil fumarate.

<sup>a</sup>Baseline status.

31.4–37.4; during 1–2 years of follow-up; and IR, 18.5/1000 PYFU; 95% CI, 17.4–19.7; beyond 2 years). This was consistent across all ARV drug classes and for individual ARVs (Figure 1A and B).

#### cLEE Grading Severity

Over half the individuals who developed cLEE were classified as below Grade 1 severity ( $>ULN-1.25\times ULN-51\%$ ), followed by Grade 1 ( $1.25-2.5\times ULN-40\%$ ), Grade 2 ( $2.5-5\times ULN-7\%$ ), Grade 3 ( $5-10\times ULN-2\%$ ) and Grade 4 ( $>10\times ULN-1\%$ ).

#### Individual ARVs Associated With cLEE

ARVs associated with cLEE are shown in Figure 2. In addition to the prespecified factors of CD4 nadir, baseline HIV-RNA, and viral hepatitis status included in the model, region of care, dyslipidemia, and baseline BMI were the factors that remained statistically significantly associated with cLEE with  $P < .10$ , as outlined in the methods. We found no evidence of an association between use of any INSTIs and cLEE (IR, Figure 2). Use of TDF (IR, 1.24; 95% CI, 1.10–1.40) was statistically significantly associated with an increased risk cLEE, whereas use of DRV/b (IR, 0.83; 95% CI, 0.73–0.94) was associated with a decreased risk of cLEE. Overall, a higher risk of cLEE was observed for NNRTIs (IR, 1.13; 95% CI, 1.01–1.26); this was also observed for use of EFV and RPV when analyzed separately (IR, 1.27; 95% CI, 1.06–1.52; and IR, 1.18; 95% CI, 1.02–1.36; respectively), but was no longer statistically significant after adjusting for region of care (IR, 1.16; 95% CI, 0.96–1.40; and IR, 1.09; 95% CI, 0.94–1.27). Of note, the point estimates for EFV and RPV consistently remain in the same direction for the whole NNRTI class, but have fewer individuals when analyzed alone vs the combined group. A lower risk of cLEE was also observed with use of TAF (IR, 0.85; 95% CI, 0.75–0.96) but was no longer statistically significant after adjustment for region of care and TAF starting year (IR, 0.92; 95% CI, 0.79–1.08).

#### Sensitivity Analyses

All individual ARV associations with cLEE were similar to the primary analyses in the sensitivity analysis using an on-treatment analysis (IR, data not shown).

There was not enough power to investigate all individual ARVs among those with viral hepatitis coinfection, but we did have enough data to investigate some drug classes. Use of INSTIs was associated with a reduced risk of cLEE (IR, 0.79; 95% CI, 0.64–0.99), and there was no observed association with the other ARV drug classes (Figure 3). We also had enough power to investigate associations for individual INSTIs in those without baseline viral hepatitis and here observed an unexpected association between use of RAL and cLEE (IR, 1.25; 95% CI, 1.05–1.48). This association remained in the on-treatment analysis and when adjusting for prior AIDS and TB diagnoses. To

investigate this association further, we adjusted for markers of fibrosis (IR, baseline AST to platelet ratio index [APRI], and Fibrosis-4 [FIB-4] scores), any use of other ARVs previously shown to be associated with cLEE (IR, TDF, and EFV), and stratified the analysis by starting RAL before or after 2016 (IR, as RAL utilization began to decline in 2016), but these adjustments did not remove the association among those starting RAL after 2016.

Among those who were ART-naïve before baseline, trends were similar to the main analysis, but with significantly lower statistical power (Figure 4).

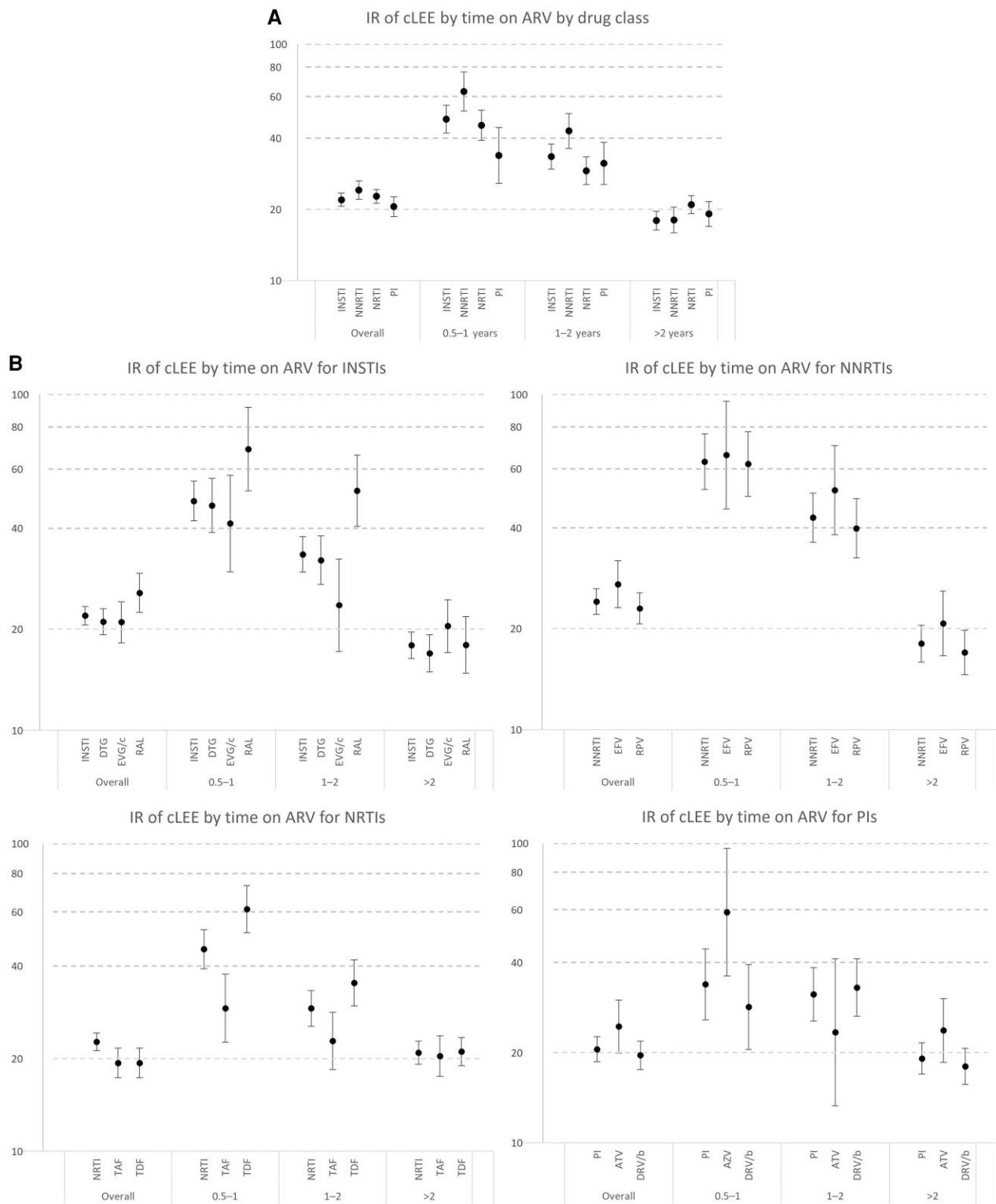
We investigated those who initiated only 1 of EFV, RPV or TDF. The association with TDF/RPV and cLEE remained (IRR, 1.22; 95% CI, 1.04–1.41; and IRR, 1.06; 95% CI, 0.82–1.38), and there was no longer an association with EFV and cLEE, although the numbers were greatly reduced (IRR, 0.98; 95% CI, 0.63–1.52). Among those who initiated DRV/b without TDF, we too saw results similar to those of the main analysis (IRR, 0.93; 95% CI, 0.76–1.14), although the sample size was significantly smaller.

#### Other Factors Associated With cLEE

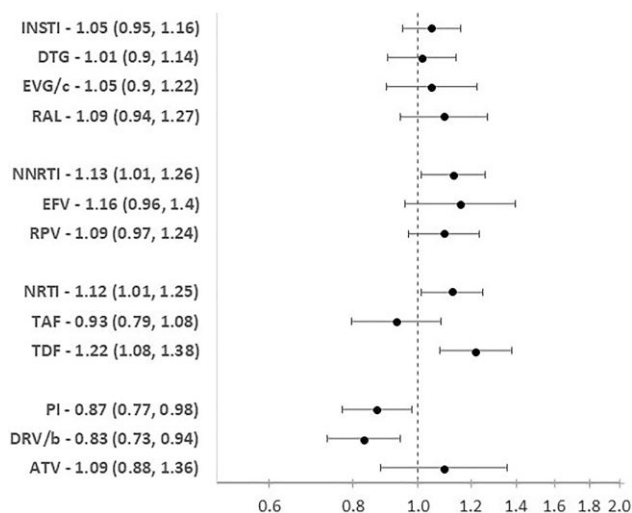
Besides ARV exposure, as expected we found other factors to be associated with cLEE. Table 2 shows these factors modeled without individual ARV exposure, but these results were consistent across all our models. We found ethnic origin (IRR, 0.67; 95% CI, 0.58–0.78; Black vs White), geographical region of care (IRR, 0.86; 95% CI, 0.76–0.98; IRR, 1.09; 95% CI, 0.93–1.27; IRR, 1.45; 95% CI, 1.26–1.68; for Southern, Northern, Eastern, vs Western Europe), ARV starting year (IRR, 0.88; 95% CI, 0.89–0.97;  $\geq 2016$  vs  $< 2016$ ), viral hepatitis status (IRR, 1.30; 95% CI, 1.16–1.45; positive vs negative), dyslipidemia (IRR, 1.33; 95% CI, 1.21–1.45), and BMI (IRR, 1.46; 95% CI, 1.32–1.62; for  $\geq 25$  compared with  $< 25$ ) to be associated with cLEE (Table 2).

## DISCUSSION

This is the largest international study to systematically examine the relationship between use of commonly used ARVs, including individual INSTIs and cLEE, over the last decade. We found that cLEE is common among contemporarily treated individuals, although most instances were low grade and more frequent in the first year after initiating a new ARV. With a median follow-up in excess of 5 years, we found no short-term risk of ALT elevation with the use of INSTIs, even after adjusting for confounders including viral hepatitis, BMI, CD4 cell counts, HIV-RNA, dyslipidemia, and diabetes mellitus. We confirmed previous studies' findings that use of EFV, RPV, and TDF was associated with an increased risk of cLEE [22, 24, 28, 29, 30]; although EFV and RPV did not reach statistical significance after adjusting for region of care, the point estimate remained in the



**Figure 1.** Incidence rate (95% CI) of developing cLEE after beginning a new ARV regimen to which they had not been previously exposed by time since ARV exposure and (A) drug class and (B) individual drugs. Abbreviations: ARV, antiretroviral; ATV, atazanavir (PYFU: 3763); IR, incidence rate; DRV/b, darunavir (PYFU: 16 131); DTG, dolutegravir (PYFU: 23 237); EFV, efavirenz (PYFU: 5416); EGV/c, elvitegravir (PYFU: 9053); INSTI, integrase strand transfer inhibitor (PYFU: 42 415); NNRTI, non-nucleoside reverse transcriptase inhibitor (PYFU: 20 012); NRTI, nucleoside reverse transcriptase inhibitor (PYFU: 39 625); PI, protease inhibitor (PYFU: 19 885); PYFU, person-years of follow-up; RAL, raltegravir (PYFU: 8336); RPV, rilpivirine (PYFU: 14 605); TAF, tenofovir alafenamide (PYFU: 16 011); TDF, tenofovir disoproxil fumarate (PYFU: 24 200).



**Figure 2.** Adjusted\* incidence rate ratio (95% CI) for developing chronic liver enzyme elevation after initiating a new ARV to which they had not been previously exposed by drug class and individual drug. The reference group for each model is no previous exposure to that drug. BIC did not have enough events/follow-up to analyze individually. \*All models were adjusted for viral hepatitis status, nadir CD4 at baseline (<350, 350–500,  $\geq$ 500 cells/mm<sup>3</sup>), HIV-RNA at baseline (<200,  $\geq$ 200 copies/mL), region of care (Western, Southern, Northern, Eastern Europe), ARV starting year, ethnicity (White, Black, other, unknown), dyslipidemia (random total cholesterol >240 mg/dL, HDL <35 mg/dL, triglyceride >200 mg/dL, or initiation of lipid-lowering therapy), and BMI (<25,  $\geq$ 25, missing). Abbreviations: ARV, antiretroviral; ATV, atazanavir; BIC, bictegravir; BMI, body mass index; DRV/b, darunavir; DTG, dolutegravir; EFV, efavirenz; EVG/c, elvitegravir; HDL, high-density lipoprotein; INSTI, integrase strand transfer inhibitor; NRTI, nucleoside reverse transcriptase inhibitor; NNRTI, non-nucleoside reverse transcriptase inhibitor; PI, protease inhibitor; RAL, raltegravir; RPV, rilpivirine; TAF, tenofovir alafenamide; TDF, tenofovir disoproxil fumarate.

same direction, just losing statistical significance. Additionally, use of TAF and DRV/b was associated with lower risk of cLEE, although TAF did not reach statistical significance after adjusting for region of care and calendar year.

From the outset, clinical trials for INSTIs suggest no concern for hepatotoxicity compared with other drugs [31–33, 34], although liver enzyme elevations can affect 1%–10% of individuals [29, 35–40]. It is important to monitor the liver safety of drugs over a longer term and under real-life conditions in a heterogeneous population beyond what clinical trials allow. Two previous national studies found use of INSTIs to be associated with a lower risk of liver enzyme elevations in the United States and Italy, respectively [21, 41]. Of note, the comparison groups were different in these prior studies of INSTI use with liver outcomes, and liver enzyme elevation was defined differently than in our analysis. Wood et al. showed a lower risk of cLEE (defined as ALT  $\geq$ 1.25 times the ULN on at least 2 visits, for a duration of  $\geq$ 6 months within 2 years) in individuals receiving INSTIs compared with those who received boosted PIs, and Taramasso et al. showed lower liver enzyme elevation (ALT >2.5 times the ULN in individuals with normal baseline

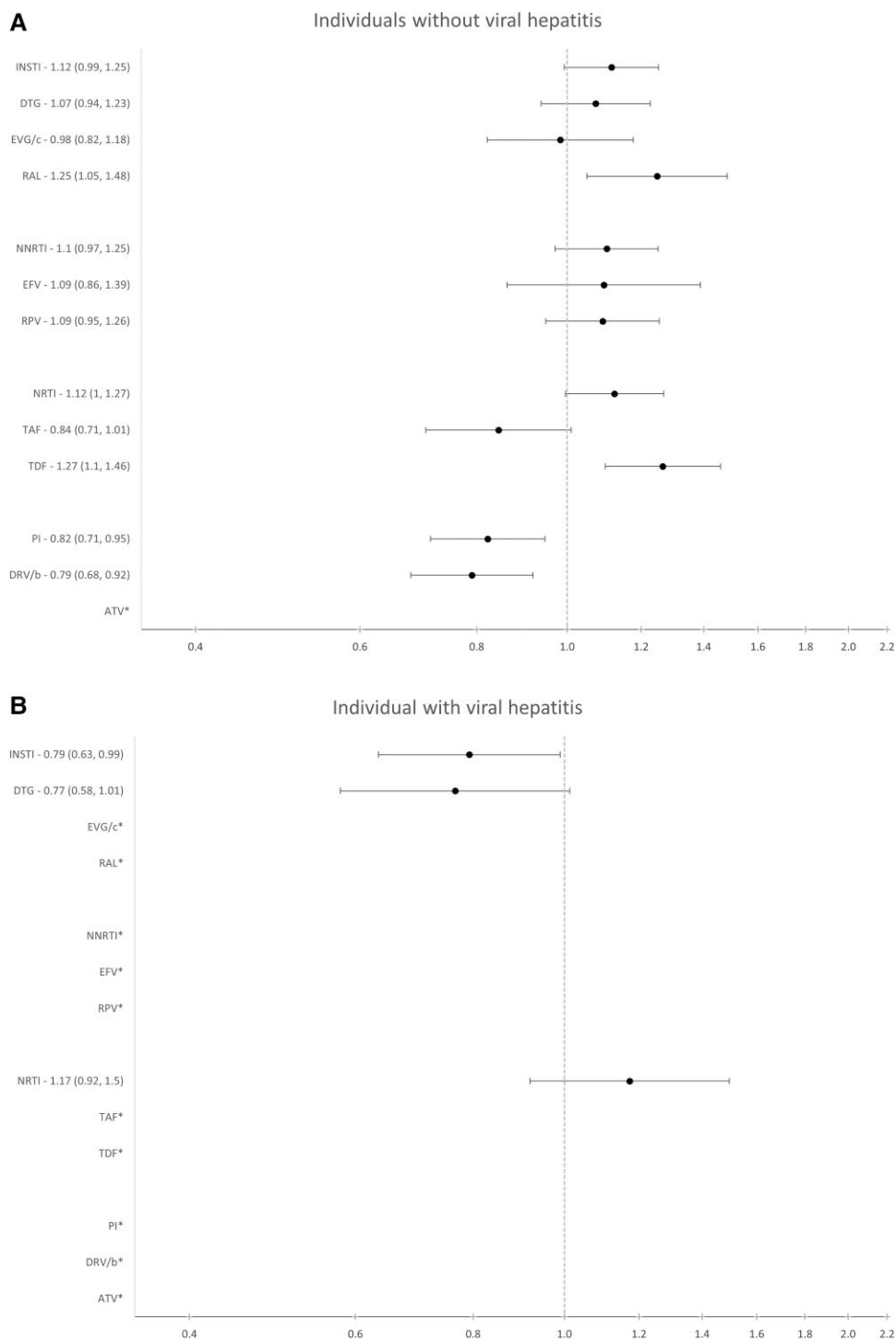
levels, or 2.5 times baseline value for those with elevated baseline ALT) in INSTIs compared with NNRTIs. This contrasts with our analysis, where we compared INSTIs with all other drugs. With a median follow-up of >4 years, this supports previous work from smaller cohorts suggesting that INSTI-based regimens do not lead to elevated liver enzymes.

Although we observed no association of INSTIs with cLEE compared with any other drug in the main analysis, we surprisingly observed a seemingly protective effect of INSTIs in the group with viral hepatitis at baseline. It should be noted that individuals with baseline viral hepatitis still had to meet our inclusion criteria of a normal ALT at baseline, so these individuals were highly selected and not representative of the general hepatitis-positive population. We did attempt to investigate those with chronic hepatitis C, including only those with a positive HCV-RNA measurement at baseline, but there were too few individuals to analyze ( $n = 434$ ).

We did observe an increased risk of cLEE with use of RAL among those without viral hepatitis B or C. Of note, as previously reported in RESPOND, RAL utilization declined substantially over time [42]; before 2016, 13% of the cohort initiated RAL compared with only 3% after 2016. To investigate this positive association further, we stratified the analysis by year of starting RAL (<2016 and  $\geq$ 2016) and additionally by TB diagnosis, AIDS diagnosis, and CVD. The association between cLEE and RAL was not present before 2016 when RAL was most used, and the association with cLEE was strongest among those starting in later years, when very few individuals initiated RAL. We therefore believe this finding is due to unmeasured confounding as RESPOND does not capture other clinical reasons that might be linked to liver injury (eg, other drugs with hepatotoxic potential) for individuals starting RAL in later years, when other ARVs were preferred.

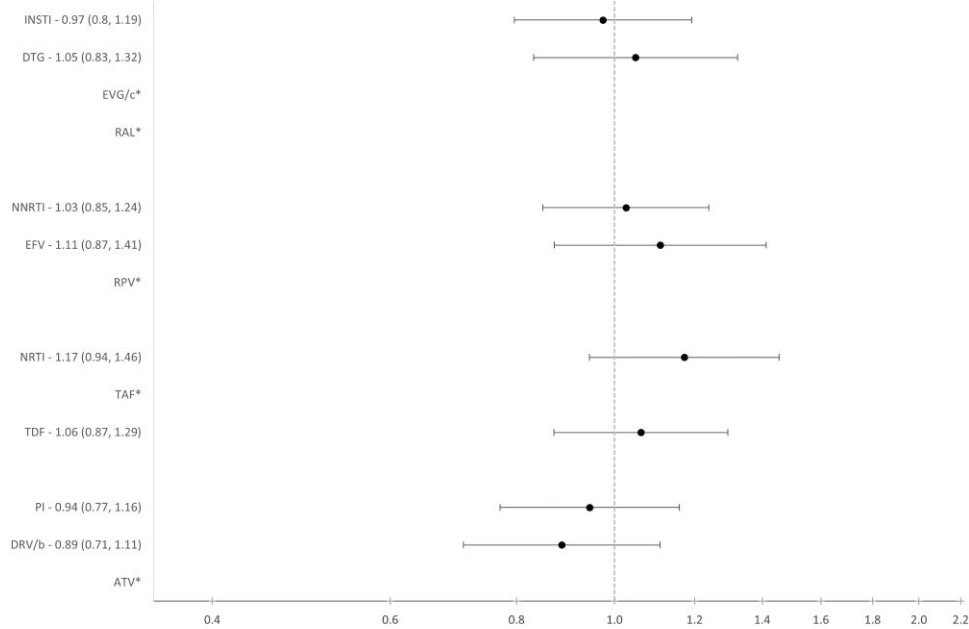
The increased risk of cLEE associated with NNRTIs as a class and TDF utilization builds on evidence from previous studies. Some individuals are treated with these drugs concomitantly; to show that the effects we observed from each drug were independent, we performed a sensitivity analysis investigating only individuals prescribed 1 of these drugs. The magnitude of our effects remained similar to the main results for TDF and RPV, although the sample size was greatly reduced. The association between EFV and cLEE was removed when we analyzed individuals not concomitantly taking TDF or RPV (IRR, 0.96; 95% CI, 0.61–1.52). This could be due to the association being driven by TDF or the decreased sample size of this analysis ( $n = 17\,106$  and 1932 cLEE events vs  $n = 8533$  and 754 events).

NNRTIs were associated with an increase in cLEE, driven by EFV and RPV utilization (Figure 2). Given that the point estimates for EFV and RPV are consistently in the same direction as NNRTIs as a class, we believe that EFV and RPV are the main drivers of the NNRTI class association as they are the most commonly used NNRTIs. The numbers of



**Figure 3.** Adjusted incidence rate ratio (95% CI) for developing chronic liver enzyme elevation among those (A) without and (B) with viral hepatitis by drug class and individual drug. \*There were not enough data to analyse these drugs individually. In order to have adequate power (type I and II error rates of 0.05 and 0.2, respectively) to detect an IRR of 1.4 or higher For those without hepatitis (events = 1441), we needed a follow-up ratio of 5:95, for those with hepatitis (events = 399), we needed a follow-up ratio of 23:77. The reference group for each model is no previous exposure to that drug. All models were adjusted for nadir CD4 at baseline (<350, 350–500, ≥500 cells/mm<sup>3</sup>), HIV-RNA at baseline (<200, ≥200 copies/mL), ARV starting year, ethnicity (White, Black, other, unknown), region of care (Western, Southern, Northern, Eastern Europe), dyslipidemia (random total cholesterol >240 mg/dL, HDL less than 35 mg/dL, triglyceride >200 mg/dL, or initiation of lipid-lowering therapy), and BMI (<25, ≥25, missing). Abbreviations: ATV, aqtazanavir; BIC, bictegavir; BMI, body mass index; DRV/b, darunavir; DTG, dolutegravir; EFV, efavirenz; EVG/c, elvitegravir; HDL, high-density lipoprotein; INSTI, integrase strand transfer inhibitor; NNRTI, non-nucleoside reverse transcriptase inhibitor; NRTI, nucleoside reverse transcriptase inhibitor; PI, protease inhibitor; RAL, raltegravir; RPV, rilpivirine; TAF, tenofovir; TDF, tenofovir disoproxil fumarate.

Adjusted\* IRR (95% CI) of chronic liver enzyme elevation among ARV-naive individuals



**Figure 4.** Adjusted incidence rate ratio (95% CI) for developing chronic liver enzyme elevation after initiating a new ARV to which they had not been previously exposed among those who were ART-naïve before baseline by drug class and individual drug using the RESPOND data set. \*There were not enough data to analyze these drugs individually. In order to have adequate power (type I and II error rates of 0.05 and 0.2, respectively) to detect an IRR of  $\geq 1.4$  for those who were ART-naïve before baseline (events = 599), we needed a follow-up ratio of 14:86. The reference group for each model is no previous exposure to that drug. All models were adjusted for viral hepatitis status, nadir CD4 at baseline (<350, 350–500,  $\geq 500$  cells/mm<sup>3</sup>), HIV-RNA at baseline (<200,  $\geq 200$  copies/mL), ARV starting year, region of care (Western, Southern, Northern, Eastern Europe), ethnicity (Black, White, other, unknown), dyslipidemia (random total cholesterol >240 mg/dL, HDL <35 mg/dL, triglyceride >200 mg/dL, or initiation of lipid-lowering therapy), and BMI (<25,  $\geq 25$ , missing). Abbreviations: ATV, aqazanavir; BIC, bictegravir; BMI, body mass index; DRV/b, darunavir; DTG, dolutegravir; EFV, efavirenz; EGV/c, elvitegravir; HDL, high-density lipoprotein; INSTI, integrase strand transfer inhibitor; NNRTI, non-nucleoside reverse transcriptase inhibitor; NRTI, nucleoside reverse transcriptase inhibitor; PI, protease inhibitor; RAL, raltegravir; RPV, rilpivirine; TAF, tenofovir; TDF, tenofovir disoproxil fumarate.

individuals starting EFV (n = 882) and RPV (n = 2623) are substantially smaller than NNRTIs as a class (n = 3504), so the lack of statistical significance is likely due to lack of power. Previous data have shown that acute ALT elevations >5 times the ULN occur in 1%–8% of individuals on EFV [28, 29, 30], and this rate is higher among those who are coinfecting with HCV [29, 43]. We have shown that in addition to acute liver injury, EFV also contributes to longer-term liver enzyme elevations, and there is a similar risk for cLEE among those mono-infected with HIV and those also coinfecting with HCV and/or HBV, although this was not statistically significant due to the limited number of individuals included in this analysis.

Previous observational data from the D:A:D and Swiss HIV Cohort Studies have also shown an association between TDF and elevated ALT levels in those with and without viral hepatitis coinfection [22, 24], consistent with our findings. We found a trend for slightly reduced risk of cLEE with TAF, although this did not reach statistical significance. This is supported by data from the Swiss HIV Cohort Study and the Canadian Hepatitis B Network showing that among those with elevated

ALT, switching from TDF to TAF significantly reduces ALT elevations [22, 44]. It is worth noting that in RESPOND there is likely confounding by indication with TAF utilization given that it has a more favorable safety profile compared with TDF.

Importantly, our data add to the evidence showing that there are long-term chronic ALT elevations that should be monitored with NNRTIs and TDF.

We found no association between cLEE and PIs, which is supported by other recent findings [45–48]. However, we did observe a decreased risk of cLEE associated with DRV/b use, which has not been shown previously. DRV/b is often used in individuals challenged by adherence and/or drug resistance due to its high genetic barrier to HIV resistance [49]. It is therefore encouraging that hepatotoxicity does not appear to be a concern with DRV/b use, regardless of viral hepatitis status, although confounding by indication might play a role in our findings. DRV/b is also often concomitantly prescribed with TDF, which is associated with cLEE. Among those prescribed DRV/b without TDF, we found results similar to those of the main analysis, although the numbers were greatly reduced.

**Table 2. Other Factors Associated With Developing Chronic Liver Enzyme Elevation in a Multivariable Model After Initiating a New ARV to Which They Had Not Been Previously Exposed Using the RESPOND Data Set**

|   |                 | IRR* | 95% CI |      | P Value |
|---|-----------------|------|--------|------|---------|
| Ethnicity                                 | White           | 1.00 | ...    | ...  |         |
|   | Black           | 0.67 | 0.58   | 0.78 | <.001   |
|   | Other           | 1.50 | 1.24   | 1.81 | <.001   |
|   | Unknown         | 0.94 | 0.79   | 1.11 | .45     |
| Geographical region of care               | Western Europe  | 1.00 | ...    | ...  |         |
|   | Southern Europe | 0.86 | 0.76   | 0.98 | .026    |
|   | Northern Europe | 1.09 | 0.93   | 1.27 | .313    |
|   | Eastern Europe  | 1.45 | 1.26   | 1.68 | <.001   |
| ARV starting year*                        | <2016           | 1.00 | ...    | ...  |         |
|   | ≥2016           | 0.88 | 0.80   | 0.97 | .012    |
| Baseline CD4 nadir, cells/mm <sup>3</sup> | <350            | 1.00 | ...    | ...  |         |
|   | 350–500         | 1.02 | 0.89   | 1.16 | .79     |
|   | >500            | 1.02 | 0.88   | 1.19 | .779    |
| Baseline HIV-RNA, copies/mL               | <200            | 1.00 | ...    | ...  |         |
|   | ≥200            | 1.05 | 0.95   | 1.17 | .312    |
| Hepatitis status                          | Negative        | 1.00 | ...    | ...  |         |
|   | Positive        | 1.30 | 1.16   | 1.45 | <.001   |
|   | Unknown         | 1.35 | 1.09   | 1.67 | .006    |
| Dyslipidemia                              | ...             | 1.33 | 1.21   | 1.45 | <.001   |
| Baseline BMI*                             | <25             | ...  | ...    | ...  |         |
|   | ≥25             | 1.46 | 1.32   | 1.62 | <.001   |
|   | Missing         | 1.14 | 1.01   | 1.29 | .035    |

\*Abbreviations: ARV, antiretroviral; BMI, body mass index; IRR, incidence rate ratio; RESPOND, International Cohort Consortium of Infectious Diseases.

These results are from a multivariable model that does not adjust for individual ARV exposures. CD4 nadir, HIV-RNA, and hepatitis status were confounders that we determined a priori would be included in all models. The other remaining factors were consistently associated with cLEE in all models (data not shown). Age, sex, HIV transmission risk group, and smoking status were nonsignificant in the multivariable models and were not included as covariates.

Most (92%) of the individuals in our cohort defined as having cLEE were not classified as having the ALT elevation component of the drug-induced liver injury definition (DILI—ALT > 2 ULN) [50], so for most individuals the clinical relevance of cLEE is not yet clear. Previous research has shown mixed effects of elevated liver enzymes on all-cause mortality [45, 51, 52], but the definitions used for ALT elevations were not consistent among these studies. Our data do not yet allow for further investigation of cLEE and mortality, as the median time from cLEE onset to the end of follow-up (IQR) was 2.8 (1.3–4.5) years.

#### Limitations and Strengths

This study has some limitations. As with all observational studies, the validity of our estimates relies on the untestable assumption that we have appropriately adjusted for unmeasured confounding. There are likely unmeasured factors and/or unknown confounders that predict cLEE in this population (eg, drug–drug interactions or drugs with unfavorable hepatic safety profiles). Although it is not possible to know the magnitude of these unmeasured factors, we have adjusted for the most commonly measured factors known to be associated with cLEE including viral hepatitis status, BMI, CD4 cell counts, HIV-RNA, dyslipidemia (including use of lipid-lowering drugs), and diabetes mellitus. We do not believe that there are other major factors that

would confound the relationship between ARV and cLEE. Alcohol use data were not systematically collected in our cohort at the time, and we were unable to adjust for this. It is unlikely that alcohol confounds the relationship between cLEE and ARV that we observed, as alcohol is unlikely to have a large impact on a physician's ARV selection for an individual with normal liver function. While we acknowledge that people with HIV are prescribed ARVs in combinations, due to the large number of different combinations available it is not feasible to analyze all unique regimens. Further, focusing on regimens rather than individual ARVs would have made it challenging to disentangle which of the ARVs in the combination drives the association seen. We have also included individuals previously exposed to ARVs, which could impact liver function, but an inclusion criterion of this analysis was having normal ALT at baseline, and in sensitivity analyses models were further adjusted for ARVs previously associated with liver toxicity and for APRI and FIB-4. We have also tried to account for this by limiting the analysis to ART-naïve individuals before baseline, and among the drugs with enough power to analyze, we found similar results as in the main analysis. Additionally, we did not have adequate data on all other potentially hepatotoxic drugs prescribed in conjunction with ARVs, so we cannot rule out drug–drug interactions playing a role in our findings. We did, however, adjust for those with prior AIDS or TB diagnoses as these individuals might be

prescribed RAL preferentially over other ARVs because RAL does not have the same potential for interactions with TB drugs. The median age of our cohort (IQR) was 47 (38–55) years, 26% of our cohort was age 50–60 years, and 14% was older than 60. It is possible that there would be a higher incidence of comorbidities, drug–drug interactions, and liver injuries among older individuals, but we did not see an association between older age and increased risk of cLEE. We were also unable to investigate all newer ARVs including doravirine and cabotegravir due to the limited number of individuals initiating these drugs. We could not fully distinguish those with active chronic HCV and HBV infections from those with inactive or cleared infections due to data quality, and those with viral hepatitis in our study would have had normal ALT at baseline as per our inclusion criteria. Finally, our data are from clinical cohorts based in Europe and Australia, and the results might not be generalizable beyond this setting.

There are many strengths of this study, notably its large size and long-term and recent follow-up with established cohorts throughout Europe and Australia. We therefore were able to adequately investigate newer ARVs including individual INSTIs that have not been investigated for chronic liver injury previously on a large scale in this setting. RESPOND is in a unique position to investigate this due to the sample size and heterogeneous clinical settings where there is enough variability in ARV prescription combinations to investigate drugs individually.

In conclusion, we have analyzed a large observational study and systematically examined the relationship between commonly used ARVs and chronic liver injury, assessed using liver enzymes, and found no short-term safety concerns with the use of INSTIs. We did find an elevated risk of cLEE with use of NNRTIs (driven by EFV, RPV) and TDF, a decreased risk of cLEE with DRV/b use, and a nonsignificant trend toward decreased risk of cLEE with TAF. Further research is needed to monitor longer-term associations with cLEE, particularly for INSTIs, associations with other liver end points including markers of fibrosis, and the impact of cLEE on mortality for newer ARVs in different settings.

## Supplementary Data

**Supplementary materials** are available at *Open Forum Infectious Diseases* online. Consisting of data provided by the authors to benefit the reader, the posted materials are not copyedited and are the sole responsibility of the authors, so questions or comments should be addressed to the corresponding author.

## Acknowledgments

### RESPOND STUDY GROUP

The membership of the International Multicohort Consortium of Infectious Disease (RESPOND) study group includes:

1. **AIDS Therapy Evaluation in the Netherlands Cohort (ATHENA):** F Wit, Marc vd Valk, M Hillebrecht, Stichting HIV Monitoring (SHM), Amsterdam, Netherlands
2. **The Australian HIV Observational Database (AHOD):** K Petoumenos, M Law, J Hutchinson, UNSW Sydney, Sydney, Australia

3. **Austrian HIV Cohort Study (AHIVCOS):** R Zangerle, H Appoyer, Medizinische Universität Innsbruck, Innsbruck, Austria

4. **Brighton HIV Cohort:** Prof Jaime Vera, Dr Amanda Clarke, Bryony Broster, Lisa Barbour

5. **CHU Saint-Pierre:** S De Wit, M Delforge, Centre de Recherche en Maladies Infectieuses a.s.b.l., Brussels, Belgium

6. **Croatian HIV Cohort:** J Begovac, University Hospital of Infectious Diseases, Zagreb, Croatia

7. **EuroSIDA Cohort:** G Wandeler, CHIP, Rigshospitalet, RegionH, Copenhagen, Denmark

8. **Frankfurt HIV Cohort Study:** C Stephan, M Bucht, Johann Wolfgang Goethe-University Hospital, Frankfurt, Germany

9. **Georgian National AIDS Health Information System (AIDS HIS):** N Chkhartshvili, O Chokoshvili, Infectious Diseases, AIDS and Clinical Immunology Research Center, Tbilisi, Georgia

10. **Italian Cohort Naive Antiretrovirals (ICONA):** A d'Arminio Monforte, A Rodano, A Tavelli, I Fanti, Icona Foundation, Milan, Italy

11. **Modena HIV Cohort:** C Mussini, V Borghi, Università degli Studi di Modena, Modena, Italy

12. **Nice HIV Cohort:** C Pradier, E Fontas, K Dollet, C Caissotti, Université Côte d'Azur, Centre Hospitalier Universitaire de Nice, Department of Public Health, UR2CA, Nice, France

13. **PISCIS Cohort Study:** J Casabona, JM Miro, Centre Estudis Epidemiològics de ITS i VIH de Catalunya (CEEISCAT), Badalona, Spain

14. **Royal Free Hospital Cohort:** C Smith, F Lampe, M Johnson, F Burns, C Chaloner, Royal Free Hospital, University College London, London, United Kingdom

15. **San Raffaele Scientific Institute:** A Castagna, A Lazzarin, A Poli, Università Vita-Salute San Raffaele, Milano, Italy

16. **Swedish InfCare HIV Cohort:** C Carlander, A Sönnberg, M Gisslén, F Månsson, J Brännström, H Norrgren, O Elvstam, L Fohlín, L Mattson, Å Mellgren, S Blom, P Albinsson, Sweden

17. **Swiss HIV Cohort Study (SHCS):** H Günthard, B Ledergerber, H Bucher, A Scherrer, University of Zurich, Zurich, Switzerland

18. **University Hospital Bonn:** JC Wasmuth, J Rockstroh, Bonn, Germany

19. **University Hospital Cologne:** JJ Vehreschild, G. Fätkenheuer, M Scherer, N Schulze, B Franke, Cologne, Germany

**RESPOND Executive Committee:** L Ryom\*, M Law\*, J Rooney, I McNicholl, V Vannappagari, H Garges, K Petoumenos, G Wandeler, R Zangerle, C Smith, S De Wit, J Lundgren, H Günthard, L Young, R Campo

\*Chairs

**RESPOND Scientific Steering Committee:** J Lundgren\*, H Günthard\*, J Kowalska, D Raben, L Ryom, M Law, J Rockstroh, L Peters, O Kirk, D Podlekareva, A Volny-Anne, N Dedes, ED Williams, N Chkhartshvili, R Zangerle, K Petoumenos, F Wit, C Necsoi, G Wandeler, C Pradier, A D'Arminio Monforte, C Mussini, H Bucher, A Sönnberg, JJ Vehreschild, JC Wasmuth, C Smith, A Castagna, J Vera, J Begovac, J Rooney, I McNicholl, V Vannappagari, H Garges, L Young, R Campo

\*Chairs

**RESPOND Outcomes Scientific Interest Group:** L Ryom, A Mocroft, B Neesgaard, L Greenberg, N Jaschinski, A Timiryasova, L Bansi-Matharu, D Raben, L Peters, E Tusch, W Bannister, A Roen, DM Byonanebye, O Fursa, A Pelchen-Matthews, J Reekie, V Svedhem-Johansson, M Van der Valk, F Wit, K Grabmeier-Pfistershammer, R Zangerle, J Hoy, M Bloch, D Braun, A Calmy, G Schüttfort, M Youle, S De Wit, C Mussini, S Zona, A Castagna, A Antinori, N Chkhartshvili, N Bolokadze, E Fontas, K Dollet, C Pradier, JM Miro, JM Llibre, JJ Vehreschild, C Schwarze-Zander, JC Wasmuth, J Rockstroh, K Petoumenos, J Hutchinson, M Law, J Begovac, C Duvivier, G Dragovic, R Radoi, C Oprea, M Vasylyev, J Kowalska, R Matulionyte, V Mulabdic, G Marchetti, E Kuzovatova, N Coppola, I Aho, S Martini, H Bucher, A Harxhi, T Wæhre, A Pharris, A Vassilenko, G Fätkenheuer, J Bogner, A Maagaard, E Jablonowska, D Elbirt, G Marrone, C Leen, C Wyen, L Dahlerup Rasmussen, C Hatleberg, M Kundro, N Dedes, E Dixon Williams, J Gallant, C Cohen, M Dunbar, A Marongiu, V Vannappagari, H Garges, R Campo, L Young

**Community Representatives:** Alain Volny-Anne, Nikos Dedes, Luis Mendão (European AIDS Treatment Group), Esther Dixon Williams (UK RESPOND Staff).

**Coordinating Canter Staff:** JF Larsen, L Peters, N Jaschinski, A Timiryasova, B Neesgaard, O Fursa, L Ryom, ML Jakobsen, C Kraef, M Gardizi

**Data Management Staff:** K Andersen, L Ramesh Kumar, TW Elsing, S Shahi

**Statistical Staff:** J Reekie, L Greenberg, L Bansil-Matharu, A Pelchen-Matthews, K Petoumenos, D Byonanebye, E Tusch, W Bannister, A Roen

**Financial support.** The International Cohort Consortium of Infectious Disease (RESPOND) has received funding from ViiV Healthcare LLC, Gilead Sciences, and Merck Sharp & Dohme. Additional support has been provided by participating cohorts contributing data in-kind and/or statistical support: Austrian HIV Cohort Study (AHIVCOS), The Australian HIV Observational Database (AHOD), CHU Saint-Pierre, University Hospital Cologne, EuroSIDA, Frankfurt HIV Cohort Study, Georgian National AIDS Health Information System (AIDS HIS), Modena HIV Cohort, San Raffaele Scientific Institute, Swiss HIV Cohort Study (SHCS), AIDS Therapy Evaluation in the Netherlands Cohort (ATHENA), Royal Free HIV Cohort Study. A.H.O.D. is further supported by grant No. U01-AI069907 from the US National Institutes of Health and GNT1050874 from the National Health and Medical Research Council, Australia.

**Potential conflict of interest.** M.v.d.V. has received fees for participation in advisory boards and research grants from Gilead, MSD, and ViiV all paid to his institution. H.F.G. has received honoraria for DSMB or advisory board membership from ViiV, GSK, Merck, Gilead, Janssen, Johnson and Johnson, and Novartis. Furthermore, he has received a travel grant from Gilead. Outside of this work, he has received research grants paid to his institution from the Swiss National Science Foundation, Swiss HIV Cohort Study, NIH, Yvonne Jacob Foundation, Gilead, and ViiV. A.M. has received travel support, honoraria, and speaker fees from Gilead, ViiV, and Eiland and Bonnin, all outside the submitted work.

## References

- Marcus JL, Leyden WA, Alexeeff SE, et al. Comparison of overall and comorbidity-free life expectancy between insured adults with and without HIV infection, 2000-2016. *JAMA Netw Open* **2020**; 3:e207954.
- Verheij E, Boyd A, Wit FW, et al. Long-term evolution of comorbidities and their disease burden in individuals with and without HIV as they age: analysis of the prospective AGE(h)IV cohort study. *Lancet HIV* **2023**; 10:e164-74.
- Kaspar MB, Sterling RK. Mechanisms of liver disease in patients infected with HIV. *BMJ Open Gastroenterol* **2017**; 4:e000166.
- Smith CJ, Ryom L, Weber R, et al. Trends in underlying causes of death in people with HIV from 1999 to 2011 (D:A:D): a multicohort collaboration. *Lancet* **2014**; 384:241-48.
- Smith CJ, Sabin CA, Lundgren JD, et al. Factors associated with specific causes of death amongst HIV-positive individuals in the D:A:D study (vol 24, pg 1537, 2010). *AIDS* **2011**; 25:883-3.
- Trickey A, McGinnis K, Gill J, et al. Paper presented at: Conference on Retroviruses and Opportunistic Infections (CROI); 2023; Seattle, WA, USA.
- Lemoine M, Serfaty L, Capeau J. From nonalcoholic fatty liver to nonalcoholic steatohepatitis and cirrhosis in HIV-infected patients: diagnosis and management. *Curr Opin Infect Dis* **2012**; 25:10-6.
- Hartleb M, Gutkowski K, Milkiewicz P. Nodular regenerative hyperplasia: evolving concepts on underdiagnosed cause of portal hypertension. *World J Gastroenterol* **2011**; 17:1400-9.
- Kim HN, Nance R, Van Rompaye S, et al. Poorly controlled HIV infection: an independent risk factor for liver fibrosis. *J Acquir Immune Defic Syndr* **2016**; 72: 437-43.
- Crum-Cianflone N, Collins G, Medina S, et al. Prevalence and factors associated with liver test abnormalities among human immunodeficiency virus-infected persons. *Clin Gastroenterol Hepatol* **2010**; 8:183-91.
- Kovari H, Ledergerber B, Bategay M, et al. Incidence and risk factors for chronic elevation of alanine aminotransferase levels in HIV-infected persons without hepatitis B or C virus co-infection. *Clin Infect Dis* **2010**; 50:502-11.
- Sterling RK, Chiu S, Snider K, et al. The prevalence and risk factors for abnormal liver enzymes in HIV-positive patients without hepatitis B or C coinfections. *Dig Dis Sci* **2008**; 53:1375-82.
- Dharan NJ, Neuhaus J, Rockstroh JK, et al. Benefit of early versus deferred anti-retroviral therapy on progression of liver fibrosis among people with HIV in the START randomized trial. *Hepatology* **2019**; 69:1135-50.
- Soriano V, Puoti M, Garcia-Gasco P, et al. Antiretroviral drugs and liver injury. *AIDS* **2008**; 22:1-13.
- Sulkowski MS, Mehta SH, Chaisson RE, et al. Hepatotoxicity associated with protease inhibitor-based antiretroviral regimens with or without concurrent ritonavir. *AIDS* **2004**; 18:2277-84.
- Sulkowski MS, Thomas DL, Chaisson RE, et al. Hepatotoxicity associated with antiretroviral therapy in adults infected with human immunodeficiency virus and the role of hepatitis C or B virus infection. *JAMA* **2000**; 283:74-80.
- Bell LN, Chalasani N. Epidemiology of idiosyncratic drug-induced liver injury. *Semin Liver Dis* **2009**; 29:337-47.
- Ryom L, Lundgren JD, De Wit S, et al. Use of antiretroviral therapy and risk of end-stage liver disease and hepatocellular carcinoma in HIV-positive persons. *AIDS* **2016**; 30:1731-43.
- Kovari H, Sabin CA, Ledergerber B, et al. Antiretroviral drug-related liver mortality among HIV-positive persons in the absence of hepatitis B or C virus coinfection: the Data Collection on Adverse Events of Anti-HIV Drugs study. *Clin Infect Dis* **2013**; 56:870-9.
- Kovari H, Ledergerber B, Peter U, et al. Association of noncirrhotic portal hypertension in HIV-infected persons and antiretroviral therapy with didanosine: a nested case-control study. *Clin Infect Dis* **2009**; 49:626-35.
- Wood S, Won SH, Hsieh HC, et al. Risk factors associated with chronic liver enzyme elevation in persons with HIV without hepatitis B or C coinfection in the combination antiretroviral therapy era. *Open Forum Infect Dis* **2021**; 8:XXX-XX.
- Suriel B, Beguelin C, Chave JP, et al. Brief report: switching from TDF to TAF in HIV/HBV-coinfected individuals with renal dysfunction—a prospective cohort study. *J Acquir Immune Defic Syndr* **2020**; 85:227-32.
- The Respond Study Group. How to RESPOND to modern challenges for people living with HIV: a profile for a new cohort consortium. *Microorganisms* **2020**; 8:1164.
- Kovari H, Sabin CA, Ledergerber B, et al. Antiretroviral drugs and risk of chronic alanine aminotransferase elevation in human immunodeficiency virus (HIV)-mono-infected persons: the Data Collection on Adverse Events of Anti-HIV Drugs study. *Open Forum Infect Dis* **2016**; 3:ofw009.
- Schoenfeld DA. Sample-size formula for the proportional-hazards regression model. *Biometrics* **1983**; 39:499-503.
- UCSF CTSI. *Sample Size Calculators*. UCSF CTSI; 2021. Available at: <https://sample-size.net/sample-size-survival-analysis/>. Accessed June 19, 2023.
- National Institute of Allergy and Infectious Diseases. Division of AIDS (DAIDS) table for grading the severity of adult and pediatric adverse events. 2017. Available at: <https://rsc.niaid.nih.gov/sites/default/files/daidsgradingcorrectedv21.pdf>. Accessed May 1, 2024.
- Afdhal N. Can serum markers be used to reliably detect liver fibrosis? *Nat Clin Pract Gastroenterol Hepatol* **2005**; 2:132-3.
- National Institute of Diabetes and Digestive and Kidney Diseases. Livertox: Clinical and Research Information on Drug-Induced Liver Injury. National Institute of Diabetes and Digestive and Kidney Diseases; 2012.
- Rivero A, Mira JA, Pineda JA. Liver toxicity induced by non-nucleoside reverse transcriptase inhibitors. *J Antimicrob Chemother* **2007**; 59:342-6.
- Molina JM, Clotet B, van Lunzen J, et al. Once-daily dolutegravir versus darunavir plus ritonavir for treatment-naïve adults with HIV-1 infection (FLAMINGO): 96 week results from a randomised, open-label, phase 3b study. *Lancet HIV* **2015**; 2: e127-36.
- Markowitz M, Nguyen BY, Gotuzzo E, et al. Rapid and durable antiretroviral effect of the HIV-1 integrase inhibitor raltegravir as part of combination therapy in treatment-naïve patients with HIV-1 infection: results of a 48-week controlled study. *J Acquir Immune Defic Syndr* **2007**; 46:125-33.
- Molina JM, Lamarca A, Andrade-Villanueva J, et al. Efficacy and safety of once daily elvitegravir versus twice daily raltegravir in treatment-experienced patients with HIV-1 receiving a ritonavir-boosted protease inhibitor: randomised, double-blind, phase 3, non-inferiority study. *Lancet Infect Dis* **2012**; 12:27-35.
- Cocohoba J, Dong BJ. Raltegravir: the first HIV integrase inhibitor. *Clin Ther* **2008**; 30:1747-65.
- Hurt CB, Napravnik S, Moore RD, et al. Hepatic safety and tolerability of raltegravir among HIV patients coinfecting with hepatitis B and/or C. *Antivir Ther* **2014**; 19:415-22.
- Macias J, Mancebo M, Merino D, et al. Changes in liver steatosis after switching from efavirenz to raltegravir among human immunodeficiency virus-infected patients with nonalcoholic fatty liver disease. *Clin Infect Dis* **2017**; 65:1012-19.
- Kirkegaard-Klitbo DM, Thomsen MT, Gelpi M, et al. Hepatic steatosis associated with exposure to elvitegravir and raltegravir. *Clin Infect Dis* **2021**; 73:e811-14.
- Rockstroh J, Tepller H, Zhao J, et al. Safety and efficacy of raltegravir in patients with HIV-1 and hepatitis B and/or C virus coinfection. *HIV Med* **2012**; 13:127-31.

39. Wang B, Abbott L, Childs K, et al. Dolutegravir-induced liver injury leading to sub-acute liver failure requiring transplantation: a case report and review of literature. *Int J STD AIDS* **2018**; 29:414–17.
40. Nhean S, Yoong D, Wong DK, et al. Probable hepatotoxicity with dolutegravir: report of two cases and review of the literature. *AIDS* **2019**; 33:1261–63.
41. Taramasso L, Lorenzini P, Di Biagio A, et al. Incidence and risk factors for liver enzyme elevation among naive HIV-1-infected patients receiving ART in the ICONA cohort. *J Antimicrob Chemother* **2019**; 74:3295–304.
42. Greenberg L, Ryom L, Wandeler G, et al. Uptake and discontinuation of integrase inhibitors (INSTIs) in a large cohort setting. *J Acquir Immune Defic Syndr* **2020**; 83:240–50.
43. Sulkowski MS, Thomas DL, Mehta SH, et al. Hepatotoxicity associated with nevirapine or efavirenz-containing antiretroviral therapy: role of hepatitis C and B infections. *Hepatology* **2002**; 35:182–9.
44. Sarowar A, Coffin CS, Fung S, et al. Brief report: effect of antiretroviral switch from tenofovir disoproxil fumarate to tenofovir alafenamide on alanine aminotransferase, lipid profiles, and renal function in HIV/HBV-coinfected individuals in a nationwide Canadian study. *J Acquir Immune Defic Syndr* **2022**; 91:368–72.
45. Lapadula G, Costarelli S, Chatenoud L, et al. Risk of liver enzyme elevation during treatment with ritonavir-boosted protease inhibitors among HIV-monoinfected and HIV/HCV-coinfected patients. *J Acquir Immune Defic Syndr* **2015**; 69:312–8.
46. Torti C, Lapadula G, Antinori A, et al. Hyperbilirubinemia during atazanavir treatment in 2,404 patients in the Italian Atazanavir Expanded Access Program and MASTER cohorts. *Infection* **2009**; 37:244–9.
47. Rodriguez JM, Hermida JM, Casado JL, et al. The use of atazanavir in HIV-infected patients with liver cirrhosis: lack of hepatotoxicity and no significant changes in bilirubin values or model for end-stage liver disease score. *AIDS* **2011**; 25:1006–9.
48. Di Biagio A, Nicolini LA, Lorenzini P, et al. Liver enzyme elevation during darunavir-based antiretroviral treatment in HIV-1-infected patients with or without hepatitis C coinfection: data from the ICONA Foundation Cohort. *HIV Clin Trials* **2014**; 15:151–60.
49. Aoki M, Das D, Hayashi H, et al. Mechanism of darunavir (DRV)'s high genetic barrier to HIV-1 resistance: a key V32I substitution in protease rarely occurs, but once it occurs, it predisposes HIV-1 to develop DRV resistance. *mBio* **2018**; 9:e02425-17.
50. Tajiri K, Shimizu Y. Practical guidelines for diagnosis and early management of drug-induced liver injury. *World J Gastroenterol* **2008**; 14:6774–85.
51. Bansi L, Gazzard B, Post F, et al. Biomarkers to monitor safety in people on art and risk of mortality. *J Acquir Immune Defic Syndr* **2012**; 60:51–8.
52. Ruhl CE, Everhart JE. Elevated serum alanine aminotransferase and gamma-glutamyltransferase and mortality in the United States population. *Gastroenterology* **2009**; 136:477–85.e11.

## CONFIDENCE IN DOVATO ACROSS TREATMENT SETTINGS<sup>4-9</sup>

Treatment-naïve resistance rates, with up to **3 years of evidence**<sup>5-7</sup>

**0%**  
(n=0/1,885)<sup>\*4</sup>  
REAL-WORLD EVIDENCE

**0.1%**  
(n=1/953)<sup>\*\*1,1,5,5-7</sup>  
RANDOMISED CONTROLLED TRIALS

Treatment-experienced resistance rates, with up to **5 years of evidence**<sup>1-3</sup>

**0.03%**  
(n=10/35,888)<sup>\*4</sup>  
REAL-WORLD EVIDENCE

**0%**  
(n=0/615)<sup>||5,8,9</sup>  
RANDOMISED CONTROLLED TRIALS

## >300,000 PEOPLE LIVING WITH HIV HAVE BEEN TREATED WITH DOVATO GLOBALLY<sup>10</sup>

DOVATO is supported by a wealth of evidence, with the outcomes of **>40,000** people living with HIV captured within clinical trials and real-world evidence, including those with:<sup>4-9,11,12</sup>



**NO PRIOR TREATMENT EXPERIENCE<sup>13</sup>**



**NO BASELINE RESISTANCE TESTING<sup>13</sup>**



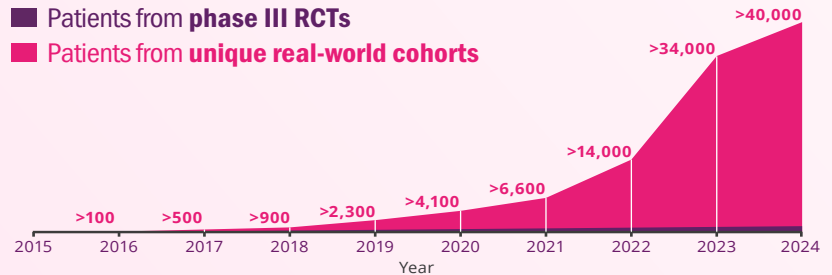
**HIGH BASELINE VIRAL LOAD**  
(>100,000 copies/mL and even >1M copies/mL)<sup>6,13</sup>



**LOW CD4+ COUNT**  
(≤200 cells/mm<sup>3</sup>)<sup>13</sup>

■ Patients from phase III RCTs

■ Patients from unique real-world cohorts



## IS IT TIME TO RECONSIDER THE VALUE OF THE 2<sup>ND</sup> NRTI?

LEARN MORE

DOVATO is indicated for the treatment of Human Immunodeficiency Virus type 1 (HIV-1) infection in adults and adolescents above 12 years of age weighing at least 40 kg, with no known or suspected resistance to the integrase inhibitor class, or lamivudine.<sup>13</sup>

Adverse events should be reported. Reporting forms and information can be found at <https://yellowcard.mhra.gov.uk/> or search for MHRA Yellowcard in the Google Play or Apple App store. Adverse events should also be reported to GSK on 0800 221441

### REFERENCES

- Maggiolo F et al. BMC Infect Dis 2022; 22(1): 782.
- Taramasso L et al. AIDS Patient Care STDS 2021; 35(9): 342-353.
- Ciccullo A et al. JAIDS 2021; 88(3): 234-237.
- ViiV Healthcare. Data on File. REF-223795. 2024.
- Cahn P et al. AIDS 2022; 36(1): 39-48.
- Rolle C et al. Open Forum Infect Dis 2023; 10(3): ofad101.
- Cordova E et al. Poster presented at 12th IAS Conference on HIV Science. 23-26 July 2023. Brisbane, Australia. TUPEB02.
- De Wit S et al. Slides presented at HIV Glasgow. 23-26 October 2022. Virtual and Glasgow, UK. M041.
- Llibre J et al. Clin Infect Dis 2023; 76(4): 720-729.
- ViiV Healthcare. Data on File. REF-220949. 2024.
- Rolle C et al. Poster presented IDWeek. 11-15 October 2023. Virtual and Boston, USA. 1603.
- Slim J et al. Abstract presented IDWeek. 11-15 October 2023. Virtual and Boston, USA. 1593.
- DOVATO. Summary of Product Characteristics. June 2023.

### PRESCRIBING INFORMATION

[Dovato Prescribing Information](#)

[Legal Notices](#)

[Privacy Policy](#)

[Contact Us](#)

ViiV Healthcare, 980 Great West Road, Brentford, Middlesex, London, UK.

ViiV trademarks are owned by or licensed to the ViiV Healthcare group of companies.

Non-ViiV trademarks are owned by or licensed to their respective owners or licensors.

©2024 ViiV Healthcare group of companies or its licensor. All rights reserved.

Intended for healthcare professionals only.

### ABBREVIATIONS

**3TC**, lamivudine; **CD4**, cluster of differentiation 4; **DTG**, dolutegravir; **FDA**, United States Food and Drug Administration; **FTC**, emtricitabine; **HIV**, human immunodeficiency virus; **ITT-E**, intention-to-treat exposed; **NRTI**, nucleoside/nucleotide reverse transcriptase inhibitor; **RCT**, randomised controlled trial; **RNA**, ribonucleic acid; **TAF**, tenofovir alafenamide fumarate; **TDF**, tenofovir disoproxil fumarate; **XTC**, emtricitabine.

### FOOTNOTES

\*Data extracted from a systematic literature review of DTG+3TC real-world evidence. Overlap between cohorts cannot be fully excluded.

\*\*The reported rate reflects the sum-total of resistance cases calculated from GEMINI I and II (n=1/716, through 144 weeks), STAT (n=0/131, through 52 weeks), and D2ARLING (n=0/106, through 24 weeks).<sup>5-7</sup>

†GEMINI I and II are two identical 148-week, phase III, randomised, double-blind, multicentre, parallel-group, non-inferiority, controlled clinical trials testing the efficacy of DTG/3TC in treatment-naïve patients. Participants with screening HIV-1 RNA ≤500,000 copies/mL were randomised 1:1 to once-daily DTG/3TC (n=716, pooled) or DTG + TDF/FTC (n=717, pooled). The primary endpoint of each GEMINI study was the proportion of participants with plasma HIV-1 RNA <50 copies/mL at Week 48 (ITT-E population, snapshot algorithm).<sup>13</sup>

‡STAT is a phase IIIb, open-label, 48-week, single-arm pilot study evaluating the feasibility, efficacy, and safety of DTG/3TC in 131 newly diagnosed HIV-1 infected adults as a first line regimen. The primary endpoint was the proportion of participants with plasma HIV-1 RNA <50 copies/mL at Week 24.<sup>6</sup>

§D2ARLING is a randomised, open-label, phase IV study designed to assess the efficacy and safety of DTG/3TC in treatment-naïve people with HIV with no available baseline HIV-1 resistance testing. Participants were randomised in a 1:1 ratio to receive DTG/3TC (n=106) or DTG + TDF/XTC (n=108). The primary endpoint was the proportion of participants with plasma HIV-1 RNA <50 copies/mL at Week 48.<sup>7</sup> Results at week 24 of the study.

|| The reported rate reflects the sum-total of resistance cases calculated from TANGO (n=0/369, through 196 weeks) and SALSA (n=0/246, through 48 weeks).<sup>8,9</sup>

¶TANGO is a randomised, open-label, trial testing the efficacy of DOVATO in virologically suppressed patients. Participants were randomised in a 1:1 ratio to receive DOVATO (n=369) or continue with TAF-containing regimens (n=372) for up to 200 weeks. At Week 148, 298 of those on TAF-based regimens switched to DOVATO. The primary efficacy endpoint was the proportion of subjects with plasma HIV-1 RNA ≥50 copies/mL (virologic non-response) as per the FDA Snapshot category at Week 48 (adjusted for randomisation stratification factor).<sup>8,13</sup>

#SALSA is a phase III, randomised, open-label, non-inferiority clinical trial evaluating the efficacy and safety of switching to DTG/3TC compared with continuing current antiretroviral regimens in virologically suppressed adults with HIV. Eligible participants were randomised 1:1 to switch to once-daily DTG/3TC (n=246) or continue current antiretroviral regimens (n=247). The primary endpoint was the proportion of subjects with plasma HIV-1 RNA ≥50 copies/mL at Week 48 (ITT-E population, snapshot algorithm).<sup>9</sup>