

This is the peer reviewed version of the following article:

Clonal selection of wine yeasts with differential adsorption activities towards phenolics and ochratoxin A / Caridi, Andrea; Sidari, Rossana; Pulvirenti, Andrea; Blaiotta, Giuseppe; Ritieni, Alberto. - In: FOOD BIOTECHNOLOGY. - ISSN 0890-5436. - 36:1(2022), pp. 22-37. [10.1080/08905436.2021.2006064]

*Terms of use:*

The terms and conditions for the reuse of this version of the manuscript are specified in the publishing policy. For all terms of use and more information see the publisher's website.

03/05/2026 18:45

(Article begins on next page)

1 Andrea Caridi<sup>a\*</sup>, Rossana Sidari<sup>a</sup>, Andrea Pulvirenti<sup>b</sup>, Giuseppe Blaiotta<sup>c</sup> and  
2 Alberto Ritieni<sup>d</sup>

3 <sup>a</sup>Department of Agriculture, “Mediterranea” University, Reggio Calabria, Italy

4 <sup>b</sup> Department of Life Sciences, University of Modena and Reggio Emilia, I-  
5 42122 Reggio Emilia, Italy

6 <sup>c</sup> Department of Agricultural Sciences, Division of Vine and Wine Sciences,  
7 Federico II University of Napoli, I-83100 Avellino, Italy

8 <sup>d</sup> Staff of UNESCO Chair for Health Education and Sustainable Development,  
9 Department of Pharmacy, Federico II University of Napoli, I-83131 Napoli,  
10 Italy

11 \*corresponding author, e-mail [acaridi@unirc.it](mailto:acaridi@unirc.it), ORCID ID: [http://orcid.org/0000-0001-6980-](http://orcid.org/0000-0001-6980-3563)  
12 3563; Department of Agriculture, “*Mediterranea*” University of Reggio Calabria, Via Feo di  
13 Vito s/n, I-89122 Reggio Calabria, Italy

#### 14 **Conflict of interest**

15 Authors declare no conflict of interest.

16

#### 17 **Funding**

18 This research was supported by Italian Ministry of Education, University and Research, PRIN  
19 (Projects of Relevant National Interest), title of the project: “Wine strain improvement  
20 strategies to enhance red wine safety based on parietal adsorption activity”.

## 21 **Clonal selection of wine yeasts with differential adsorption activities** 22 **towards phenolics and ochratoxin A**

### 23 **ABSTRACT**

24 To design a fast, easy, and cheap procedure for yeast selection with differential adsorption  
25 activities towards phenolics and ochratoxin A, 284 yeast strains were screened evaluating  
26 the type of growth during grape must fermentation, the acetic acid production on Chalk  
27 agar, the H<sub>2</sub>S production on BiGGY agar, and the spore-formation on acetate agar. After  
28 that initial step, 84 strains were pre-selected and further studied by Petri plate tests and to  
29 determine their wine-making trials for their differential adsorption activities towards  
30 phenolics and ochratoxin A. Three yeast strains were selected based on the above tests.  
31 After confirming their belonging to the *Saccharomyces cerevisiae* species and their  
32 diploidy, a spore clone selection was performed. The strain Sc1741A\_1D was selected  
33 and used in wine-making at six Calabrian wineries and found to be suitable as wine starter  
34 to improve quality and safety of red wines.

35 **KEYWORDS:** adsorption; clonal selection; ochratoxin A; phenolics; wine making;  
36 yeasts

37

### 38 **1. Introduction**

39 Though many types of yeast species are associated with wine fermentation, *Saccharomyces*  
40 *cerevisiae* is the main species involved (Mercado et al. 2010). *Saccharomyces* yeasts were used  
41 for millennia to produce wine and other fermented products (Eldarov et al. 2016). Wine results  
42 from a complex interaction between yeasts and grape musts, whose effects endure during wine  
43 aging (Ivanova et al. 2012). The impact of yeasts on wine quality is one of the most important  
44 factors (Bezerra-Bussoli et al. 2013). The microbial action allows controlling the alcoholic  
45 fermentation process, valorizing the produced wines in different ways such as increasing the  
46 flavor compounds (Belda et al. 2017). Over the last decade, oenological practices were renewed  
47 and improved both in vineyard and in winery, with a comparable evolution of yeast features  
48 required for producing valuable wines (Bonciani et al. 2016).

49 Mycotoxin-producing molds may be present at the end of grape ripening and produce  
50 ochratoxin A (OTA) in grape must and, consequently, in wine (Dachery et al. 2015). The  
51 European legal limit for OTA concentration in wine is of 2 µg/kg (Benito 2019). In Europe, the  
52 highest reported incidences and/or measured levels of OTA were found among wines from  
53 several climatically warmer Southern areas (De Jesus et al. 2018).

54 Different approaches have been conceived to remove OTA from grape and wine (Fiori  
55 et al. 2014; Piotrowska et al. 2013). Microbiological methods may represent a good strategy for  
56 wines detoxification, since it is well known that OTA can be adsorbed by some yeast and  
57 bacteria strains (Quintela et al. 2013). OTA adsorption by yeast during wine-making of both  
58 red and white wines has been proved to be strain dependent and can range from 37 to 80%  
59 (Meca et al. 2010). As already described (Petruzzi et al. 2014; Aponte and Blaiotta 2016), OTA  
60 was mainly adsorbed during yeast exponential grow phase and, in some cases, depending on  
61 strain, again released in wine. This phenomenon could be due to the premature autolysis of  
62 some yeast strains.

63 Recently interesting results were obtained selecting wine yeasts based on their different  
64 parietal adsorption activity, in order to obtain starter yeasts able to respect grape phenolic  
65 compounds, remove OTA eventually present in grape must and protect color of red wines  
66 (Caridi et al. 2020; Petruzzi et al. 2017; Pulvirenti et al. 2020). The correct approach to solve  
67 these problems is the application of breeding programs, primarily focused on oenological and  
68 technological properties, to select wine yeast strains as candidates for inbreeding program  
69 (Fernández-González et al. 2015).

70 The aim of this work was to perform the oenological characterization and the clonal  
71 selection of autochthonous strains of the genus *Saccharomyces* to improve and valorize red  
72 wines as regards their microbiological quality and safety. The strains were tested for

73 conventional oenological characteristics; the best strains were improved by spore clone  
74 selection for the following innovative characteristics: (a) wine color protection, (b) preservation  
75 of phenolics, and (c) removal of the OTA from grape must. Lastly, the best strain was used to  
76 control red wine-making at six Calabrian wineries.

77

## 78 **2. Materials and methods**

### 79 *2.1. Pre-selection trials*

80 The starting point was the check of yeast strains from the microbial collection of the Department  
81 Agraria of Reggio Calabria. Two hundred and eighty-four strains were chosen, based on these  
82 characteristics: (a) autochthonous (South Italy) wild types, (b) oenological origin (grape musts  
83 or wines), (c) elliptic cells, (d) if deriving from the same origin matrix, exhibiting different  
84 morphology to avoid the presence of duplicates. The 284 yeast strains were pre-selected by  
85 evaluating: (a) type of growth: to exclude flocculent strains during grape must fermentation in  
86 test tubes containing 10 mL of pasteurized (110°C for 10 min) and filtered (through sterile  
87 gauze) must from white grapes of the Calabrian cultivar *Greco Bianco*; (b) acetic acid  
88 production: to exclude high acetic acid producer strains on Chalk agar at 30°C for 3 days  
89 according to Lemaesquier et al. (1995); (c) H<sub>2</sub>S production: to exclude high H<sub>2</sub>S producer  
90 strains on BiGGY agar at 25°C for 48 h according to Nickerson (1953); (d) production of spores  
91 of the genus *Saccharomyces*: to exclude the non-spore producer strains and the strains  
92 producing spores different from the genus *Saccharomyces* on acetate agar (anhydrous sodium  
93 acetate 10 g/L, agar 20 g/L) at 25°C for 10 days according to Fowell (1952). For each parameter  
94 the mean value was used as a reference criterion for selecting or excluding strains. This  
95 procedure allowed to select, among a high number of strains, a few strains surely able to act as  
96 wine starter.

97 **2.2. Selection trials**

98 Based on the results obtained with the pre-selection trials, the yeast strains that had passed all  
99 the pre-selection tests were selected for their low adsorption activity of phenolics and high  
100 adsorption activity of OTA. The yeast strains were grown in the chromogenic grape-skin agar  
101 medium (Caridi 2013) and, after 10 days of anaerobic incubation at 28°C, yeast biomass was  
102 subjected to the computer-assisted evaluation of the red, green, and blue components using  
103 Photoshop CS for Windows XP from Adobe. Moreover, the strains were tested in micro-  
104 winemaking trials to confirm their low aptitude to adsorb grape pigments and phenolics during  
105 fermentation. Black grapes of *Gaglioppo* cultivar were given pre-fermentative maceration to  
106 extract pigments from skins and seeds. They were destemmed, crushed and cold soaked at 0°C  
107 for 3 days, performing a punch down twice per day. The grape must (pH 3.50, °Brix 23) was  
108 divided in aliquots of 20 mL using test tubes closed with cotton caps, immediately inoculated  
109 at 5% in triplicate with 24-h precultures of each wine yeast in the same grape must, and  
110 incubated at 20°C. The fermentation vigor after 3 days was referred to 100 mL of grape must  
111 multiplying by 5 the weight loss caused by CO<sub>2</sub> production. At the end of fermentation, wines  
112 were diluted 1:5 (v/v) with a pH 3.5 buffer (citric acid monohydrate 0.1 M, Na<sub>2</sub>HPO<sub>4</sub> 0.2 M)  
113 after centrifugation. The absorbance at 420 nm (yellow component), 520 nm (red component),  
114 and 620 nm (blue component) was read using an Anadeo1 spectrophotometer (Bibby Sterilin  
115 Ltd); the color intensity was calculated with the following formula:  $I = A_{420} + A_{520} + A_{620}$   
116 (Glories 1984). The total phenolic content was determined using the FC index (Folin-  
117 Ciocalteu's index) according to Singleton and Rossi (1965). Based on the results on strain  
118 aptitude to adsorb grape pigments and phenolics, several strains were excluded. The remaining  
119 strains were further studied for their aptitude to remove OTA from synthetic must (Yeast  
120 Nitrogen Base 6.7 g/L, tartaric acid 5.0 g/L, malic acid 5.0 g/L, citric acid 0.2 g/L, dextrose 110

121 g/L, fructose 100 g/L, and saccharose 7 g/L, pH 3.3) contaminated with the addition of 5 ppb  
122 of OTA. Yeast precultures were prepared in YPD broth (yeast extract 10 g/L, peptone 10 g/L,  
123 dextrose 20 g/L) at 28°C for 48 h. Tests were performed inoculating in triplicate 10 mL of the  
124 synthetic must with 0.2 mL of the precultures. The fermentations were carried out at 25°C and  
125 after 28 days the OTA content of the wines was determined by HPLC (Meca et al. 2010). In  
126 brief OTA present in the musts/wines was analyzed by direct injection of 20 µL of sample in  
127 the high-performance liquid chromatography with fluorescence detection (HPLC-FLD)  
128 apparatus, previously it was filtered using a 0.45 µm filter. The method used acetonitrile, water,  
129 and acetic acid (49:49:2, vol./vol./vol., respectively) as the isocratic mobile phase (1 mL/min),  
130 a monolithic C18 column (Onyx Monolithic C18 100 x 3.0 mm, Phenomenex) and a guard  
131 cartridge kit (Onyx Monolithic C18 5 x 4.6 mm, Phenomenex).

132

### 133 *2.3. Cytofluorimetric analysis and molecular identification of the selected yeasts*

134 The finally chosen strains of the genus *Saccharomyces* were studied by cytofluorimetric  
135 analysis in order to confirm their ploidy. The basic procedure followed was that of Paulovich  
136 and Hartwell (1993) modified according to Naumova et al. (2005). After that, the yeast DNA  
137 was extracted by UltraClean™ Microbial DNA Isolation Kit (MO BIO Laboratories, Inc.,  
138 USA) according to company instructions. The yeast strains were identified by RFLP of the  
139 internal transcribed spacers (ITS1 and ITS2) and the 5.8S (Sidari et al. 2014). In details, the  
140 extracted DNA (50 ng/µL) was amplified using two specific primers of the ITS region, ITS1  
141 (5' TCCGTAGGTGAACCTGCGG 3') and ITS4 (5' TCCTCCGCTTATTGATATGC 3'), in  
142 25 µL amplification mix: buffer A + MgCl<sub>2</sub> 1x, dNTPs 0.2 mM, ITS1 0.5 µM, ITS4 0.5 µM,  
143 Taq 2G Robust (KAPA Biosystems) 0.5 U, sterile MilliQ water, and 0.5 µl of DNA. The PCR  
144 program was: 95°C for 6 min; 35 cycles at 94°C for 30 secs, 55°C for 30 secs, 72°C for 60 secs;

145 72°C for 10 min. The amplified products were analyzed by electrophoresis on 1.5% agarose gel  
146 (Agarose Molecular Biology Grade, Scientifix™, Victoria, Australia) at 90 V for 1 h, stained  
147 with 1% ethidium bromide solution for 15 min, and visualized under UV light. Sizes were  
148 estimated by comparison against a DNA length standard (100 bp DNA ladder Mid, GeneWorks,  
149 Australia). Five µL of the amplified products were digested with *HaeIII*, *CfoI*, and *HinfI*  
150 restriction enzymes (Promega). The restriction mixture contained 1 µL of buffer specific for  
151 each enzyme, 0.4 µL of restriction enzyme, and 3.6 µL of sterile water. After incubating at  
152 37°C for 3 h, digested samples were visualized by electrophoresis on 2% MetaPhor® Agarose  
153 gel (Lonza, Rockland, ME, USA) at 90 V for 3 h, stained with 1% of ethidium bromide solution  
154 for 15 min, and visualized under UV light. Sizes were estimated by comparison against a DNA  
155 length standard (100 bp DNA ladder Mid, GeneWorks, Australia).

156

#### 157 ***2.4. Sporulation, spore clone selection and wine-making trials***

158 The finally chosen strains of the genus *Saccharomyces* were grown at 28°C for 2 days on YPD  
159 broth, solidified with 2% agar when required. Sporulation was induced at 28°C for 7 days on  
160 acetate agar. Ascospores were isolated on YPD agar by a micromanipulator Singer MSM  
161 System series 300 manual. Ascus wall was digested at 25°C for 20 min using zymolyase 20T,  
162 10 mg/mL (Seikagaku, Kogyo/Tokyo, Japan) diluted 1:9 with sterile distilled water. Parents  
163 and progenies were studied using the chromogenic grape-skin agar medium and performing  
164 micro-winemaking trials to determine their aptitude to adsorb grape pigments and phenolics  
165 during fermentation. Based on the results, several strains were excluded. The remaining strains  
166 were further studied for their aptitude to remove OTA from synthetic must. Based on the results  
167 of the spore clone selection trials, the best strain was used in wine-making at six Calabrian  
168 wineries: 1) Azienda Agrituristica Contessa, Lattarico (CS); 2) Azienda Vinicola Malaspina,

169 Melito Porto Salvo (RC); 3) Azienda Agricola Cosimo Murace, Bivongi (RC); 4) Azienda  
170 Vitivinicola Realarico Wines s.a.r.l., Carolei (CS); 5) Azienda Agricola Fratelli Zagarella,  
171 Arghillà (RC); 6) Verbicaro Viti e Vini S.r.l., Verbicaro (CS). Therefore, grape musts of the  
172 following cultivars were inoculated: *Gaglioppo*, *Greco Nero*, *Magliocco*, *Merlot*, and *Nerello*.  
173 Each winery received a 48-h preculture of the best strain in 5 L of pasteurized grape must. The  
174 preculture was promptly inoculated in 100 L of grape must; a control was prepared in  
175 accordance with the practices of each winery. At the end of wine-making, the experimental  
176 wines were analyzed for ethanol content by ebulliometer, absorbance at 420, 520, and 620 nm,  
177 color intensity, and OTA content (ppb).

178

## 179 *2.5. Statistical analysis*

180 Three replicates of data obtained were expressed as mean value  $\pm$  standard deviation

181

## 182 **3. Results**

### 183 *3.1. Pre-selection trials*

184 The 284 yeast strains were reduced to 84 excluding all the strains unable to act as a starter. The  
185 92.96% of the strains exhibited dispersed growth in grape must, while 7.04% were flocculent  
186 and this last category (20 strains) was excluded. The 92.25% of the strains did not produce  
187 acetic acid on Chalk agar or showed low acetic acid production, while 7.75% showed medium-  
188 high acetic acid production and this last category (22 strains) was excluded. The 14.09%,  
189 45.77%, and 40.14% of the strains showed low, medium, and high H<sub>2</sub>S production on BiGGY  
190 agar, respectively; the last category (114 strains) was excluded. The 26.05% of the strains  
191 showed either medium or high production of spores of genus *Saccharomyces* on acetate agar,  
192 21.13% showed low spore production while 52.82% did not produce spores of genus

193 *Saccharomyces* or not at all; this category (150 strains) was equally excluded. So, 200 yeast  
194 strains were excluded for one or more parameters pre-selecting 84 strains. This confirms the  
195 usefulness of the experimental protocol to quickly reduce the number of strains: (a) excluding  
196 those undoubtedly unable to be candidate as wine starter and (b) maintaining the strains with  
197 dispersed growth, low production of acetic acid and H<sub>2</sub>S, and able to produce spores of the  
198 genus *Saccharomyces*.

199

### 200 **3.2. Selection trials**

201 Table 1 reports the list of the 84 yeast strains studied for: red, green, and blue components of  
202 the biomass color on grape-skin agar medium; fermentation vigor after 3 days; color intensity  
203 and FC index. The red component of the biomass color on grape-skin agar ranged from a  
204 minimum value of 56 (strain TT201) to a maximum value of 154 (strain Sc2306) with a mean  
205 value of 106. Low values match high adsorption ability; 39 strains highlighted in grey exhibited  
206 a value  $\leq 106$  were then excluded based on high adsorption activity. The green component of  
207 the biomass color on grape-skin agar ranged from a minimum value of 27 (strain TT201) to a  
208 maximum value of 124 (strain Sc2306) with a mean value of 64. Forty-four strains highlighted  
209 in grey exhibited a value  $\leq 64$  were then excluded based on high adsorption activity. The blue  
210 component of the biomass color on grape-skin agar ranged from a minimum value of 32 (strains  
211 Sc1321 and TT201) to a maximum value of 112 (strain Sc2306) with a mean value of 59. Forty-  
212 two strains highlighted in grey exhibited a value  $\leq 59$  were then excluded based on high  
213 adsorption activity. The fermentation vigor after 3 days, referred to 100 mL of grape must,  
214 ranged from a minimum value of 5.58 (strain Sc1583) to a maximum value of 9.57 (strain  
215 TT141) with a mean value of 8.09; the 33 strains highlighted in grey exhibited a fermentation  
216 vigor  $\leq 8.09$  and were excluded. The color intensity ranged from a minimum value of 1.168

217 (strain Sc1687) to a maximum value of 6.355 (strain Sc2774) with a mean value of 3.968; the  
218 35 strains highlighted in grey exhibited a value  $\leq 3.968$  and were excluded. The FC index  
219 ranged from a minimum value of 7.88 (strain Sc1321) to a maximum value of 24.83 (strain  
220 B35-Sc128) with a mean value of 14.27. This parameter is proportional to the total quantity of  
221 phenolics present in wines; 44 strains highlighted in grey exhibited a value  $\leq 14.27$  were then  
222 excluded based on high adsorption activity. Data highlighted in grey in Table 1 are those that  
223 have caused the exclusion of the strains as they indicate lower fermentation vigor or higher  
224 adsorption activity of pigments and phenolics. The eight strains in bold in Table 1 are those that  
225 have passed all the tests and, consequently, were further studied for their aptitude to remove  
226 OTA from synthetic must with the following results: Sc1055 - 40.07%, Sc1674 - 49.92%,  
227 Sc1741 - 55.04%, Sc1905 - 54.74%, Sc2731 - 31.89%, Sc2774 - 43.90%, Sc2823 - 35.02%,  
228 TP5 - 39.47%. The percentage of OTA removal ranged from a minimum value of 31.89% to a  
229 maximum value of 55.04% with a mean value of 43.76%. Therefore, the five strains that  
230 exhibited a value  $\leq 43.76\%$  were excluded. So, based on the differential adsorption activities  
231 towards OTA and phenolics, three yeasts, Sc1674, Sc1741, Sc1905 were selected for their low  
232 aptitude to adsorb phenolics and wine color and for their high OTA removing activity.

233

### 234 *3.3. Cytofluorimetric analysis and molecular identification of the selected yeasts*

235 Flow cytometry analysis of strain ploidy confirmed that the three strains are diploids. Using the  
236 haploid control strain BY 474i (M1), strain Sc1674 exhibited  $M2/M1=2.39$ , strain Sc1741  
237 exhibited  $M2/M1=2.36$ , strain Sc1905 exhibited  $M2/M1=2.21$  (Fig. 1). The three strains  
238 selected according to their adsorption characteristics were studied for their genetic profile  
239 according to the method reported by Esteve-Zarzoso et al. (1999); they indicated the use of  
240 5.8S-ITS region and its PCR-RFLP as a method reproducible and useful to rapidly identify and

241 classify yeast species. As recommended by the same authors, the strains were studied in  
242 comparison with the type strain, in this case the *S. cerevisiae* CBS 1171<sup>T</sup>, to confirm that they  
243 effectively belong to *S. cerevisiae* species. For all the tested strains, the ITS amplicon was 880  
244 bp. All the strains showed the same restriction pattern with the three restriction enzymes used.  
245 In particular, *Hae*III gave a restriction profile of four bands with size 320, 220, 180, and 150,  
246 *Hinf*I gave a restriction profile of two bands with size 365 and 140 while *Cfo*I gave a restriction  
247 profile of three bands with size 380, 360, and 150 (Fig. 2).

248

#### 249 **3.4. Sporulation, spore clone selection and wine-making trials**

250 The three yeasts were induced to sporulate; parents and progenies were studied using the  
251 chromogenic grape-skin agar medium and performing micro-winemaking trials to determine  
252 their aptitude to adsorb grape pigments and phenolics during fermentation. It is interesting to  
253 note that the range of variability of each tested parameter allows the strain improvement but is  
254 different from strain to strain and for each parameter. Table 2 reports the list of the 27 yeast  
255 strains, three wine strains and their progeny (8 descendants for each parent) studied for: red,  
256 green, and blue components of the biomass color on grape-skin agar medium; color intensity  
257 and FC index. Obviously, the difference in results (Table 1 compared to Table 2) for the same  
258 parental strain depends on the different substrata, grape skin and grape must, used. The red  
259 component of the biomass color on grape-skin agar ranged from a minimum value of 94 (strains  
260 Sc1674B\_1C and Sc1674C\_1A) to a maximum value of 137 (strain Sc1741B\_1C) with a mean  
261 value of 115. The 13 strains highlighted in grey exhibited a value  $\leq 115$  so they were excluded.  
262 The green component of the biomass color on grape-skin agar ranged from a minimum value  
263 of 47 (strain Sc1674B\_1C) to a maximum value of 96 (strain Sc1741B\_1C) with a mean value  
264 of 68. The 14 strains highlighted in grey exhibited a value  $\leq 68$  so they were excluded. The blue

265 component of the biomass color on grape-skin agar ranged from a minimum value of 47 (strain  
266 Sc1674B\_1C) to a maximum value of 82 (strain Sc1741B\_1C) with a mean value of 63. The  
267 13 strains highlighted in grey exhibited a value  $\leq 63$  so they were excluded. The color intensity  
268 ranged from a minimum value of 2.264 (strain Sc1905) to a maximum value of 3.103 (strain  
269 Sc1674C\_1C) with a mean value of 2.713; the 12 strains highlighted in grey exhibited a value  
270  $\leq 2.713$  and were excluded. The FC index ranged from a minimum value of 14.10 (strain  
271 Sc1905C\_1B) to a maximum value of 18.77 (strain Sc1741A\_1D) with a mean value of 15.93.  
272 The 13 strains highlighted in grey exhibited a value  $\leq 15.93$  so they were excluded. Data  
273 highlighted in grey in Table 2 are those that have caused the exclusion of the strains as they  
274 indicate higher adsorption activity of pigments and phenolics. The four strains in bold in Table  
275 2 are those that have passed all the tests and, consequently, were further studied for their  
276 aptitude to remove OTA from synthetic must with the following results: Sc1674B\_1A -  
277 19.48%, Sc1741A\_1C - 13.00%, Sc1741A\_1D - 19.82%, Sc1741B\_1C - 11.58%. The  
278 percentage of OTA removal ranged from a minimum value of 11.58% to a maximum value of  
279 19.82% with a mean value of 15.97%. Based on the tested parameters, the strain preferred to  
280 perform wine-making at the six wineries was *S. cerevisiae* Sc1741A\_1D. Table 3 reports the  
281 analytical parameters of the wines produced. The ethanol content, which indicates the  
282 fermentation degree of the sugars present in the grape musts, is higher for the wines produced  
283 using the selected strain Sc1741A\_1D compared to the respective controls. At Realarico winery  
284 the two values are similar. The absorbance at 520 nm and the color intensity are strongly higher  
285 for the wines produced using the selected strain Sc1741A\_1D at Malaspina, Contessa, and  
286 Zagarella wineries; similarly, the wine produced at Murace winery has very high values. Last  
287 but not least, in all the six wineries the wines produced using the selected strain Sc1741A\_1D  
288 exhibited an OTA content always lower (30-60%) than the controls or not detectable.

#### 289 4. Discussion

290 The natural variability of yeasts for the studied traits may be exploited to obtain a further  
291 enhancement of the adsorption/non-adsorption activity of wine yeasts. Due to phosphodiester  
292 bridges in both N- and O-linked mannosyl side chains the cell surface of yeast contains  
293 numerous negative charges (Jigami and Odani 1999). In fact, the sensitivity of yeast cells to the  
294 mycotoxin OTA depends on the presence of mannosyl phosphate groups at the cell surface  
295 (Ibeas et al. 2000). The mannoprotein content of cell wall and its phosphorylation grade is very  
296 variable among different yeast strains and depends on grow phase also, so these variations could  
297 explain both the difference in detoxification ability and its release into wine following autolysis  
298 (Gil-Serna et al. 2018). Recently it was demonstrated that anthocyanins enhance yeast's  
299 adsorption of OTA during the alcoholic fermentation (Cecchini et al. 2019). However, the trend  
300 of the yeast adsorption performance is that strains that remove more OTA are the same that  
301 adsorb more color and phenolics from wine. Consequently, the best strains for red wine-making  
302 obtained with the present selection possess intermediary adsorption characteristics. Better  
303 results may be obtained by a yeast breeding program with the goal to obtain new strains through  
304 sexual recombination of the best strains obtained by clonal selection. The inheritable nature of  
305 the adsorption of wine color (Caridi et al., 2007) and OTA (Caridi et al., 2012) were analyzed  
306 on descendants derived from wine strains of *S. cerevisiae*. Investigation on the progeny  
307 demonstrated that adsorption of wine color and adsorption of OTA are polygenic inheritable  
308 quantitative traits loci, partially and interdependently correlated to color and phenolic content  
309 of wines. This may justify the employment of genomic strategies for genetic improvement of  
310 the strains. The employed experimental protocol has allowed: (a) reduction in the high number  
311 of considered strains, excluding those undoubtedly unable to be candidate as wine starter; (b)

312 selection of strains for innovative characteristics connected to their different adsorption activity;  
313 (c) improving of the strains by spore clone selection.

314 In conclusion, this research has shown how, using a fast, easy, and cheap procedure, it  
315 is possible to select, among a high number of strains, a few strains that can be improved by  
316 sporification to obtain a strain of *S. cerevisiae* suitable as wine starter to improve and valorize  
317 red wines as regards their microbiological quality and safety. Lastly, it is interesting to  
318 remember that the most common corrective techniques to reduce OTA content in wines are  
319 agents like active carbon or amicrobial filtration, which are efficient but have important  
320 undesirable side effects, such losses of color and aroma.

321

## 322 **Acknowledgments**

323 We would like to thank Enrico Cundari for help in flow cytometric analysis that was conducted  
324 at the Institute of Molecular Biology and Pathology, CNR, Rome, Italy. We would like to thank  
325 Dr Kate Susan Howell for laboratory support for yeasts identification. We would like to thank  
326 Malaspina, Verbicaro, Contessa, Realarico, Zagarella, and Murace wineries for their  
327 collaboration in the realization of the experiments.

328

## 329 **References**

330 Aponte, M., and G. Blaiotta. 2016. Selection of an autochthonous *Saccharomyces cerevisiae*  
331 strain for the vinification of “Moscato di Saracena”, a southern Italy (Calabria Region)  
332 passito wine. *Food Microbiol.* 54:30–39. doi: 10.1016/j.fm.2015.10.019  
333 Belda, I., J. Ruiz, A. Esteban-Fernández, E. Navascués, D. Marquina, A. Santos, and M. V.  
334 Moreno-Arribas. 2017. Microbial contribution to wine aroma and its intended use for wine  
335 quality improvement. *Molecules* 22 (2):e189. doi: 10.3390/molecules22020189

336 Benito, S. 2019. The management of compounds that influence human health in modern  
337 winemaking from an HACCP point of view. *Fermentation* 5 (2):33. doi:  
338 10.3390/fermentation5020033

339 Bezerra-Bussoli, C., M. A. Baffi, E. Gomes, and R. Da-Silva. 2013. Yeast diversity isolated  
340 from grape musts during spontaneous fermentation from a Brazilian winery. *Curr.*  
341 *Microbiol.* 67 (3):356–361. doi: 10.1007/s00284-013-0375-9

342 Bonciani, T., L. Solieri, L. De Vero, and P. Giudici. 2016. Improved wine yeasts by direct  
343 mating and selection under stressful fermentative conditions. *Eur. Food Res. Technol.*  
344 242:899–910. doi: 10.1007/s00217-015-2596-6

345 Caridi, A., R. Sidari, L. Solieri, A. Cufari, and P. Giudici. 2007. Wine colour adsorption  
346 phenotype: an inheritable quantitative trait loci of yeasts. *J. Appl. Microbiol.* 103 (3):735–  
347 742. doi:10.1111/j.1365-2672.2007.03301.x

348 Caridi, A., R. Sidari, A. Pulvirenti, G. Meca, and A. Ritieni. 2012. Ochratoxin A adsorption  
349 phenotype: An inheritable yeast trait. *J. Gen. Appl. Microbiol.* 58 (3):225–233.  
350 doi:10.2323/jgam.58.225.

351 Caridi, A. 2013. Improved screening method for the selection of wine yeasts based on their  
352 pigment adsorption activity. *Food Technol. Biotechnol.* 51 (1):137–144.

353 Caridi, A., R. Sidari, A. Pulvirenti, and G. Blaiotta. 2020. Genetic improvement of wine yeasts  
354 for opposite adsorption activity of phenolics and ochratoxin A during red winemaking. *Food*  
355 *Biotechnol.* 34 (4):352–370. doi: 10.1080/08905436.2020.1850472

356 Cecchini, F., M. Morassut, J.-C. Saiz, E. Garcia-Moruno. 2019. Anthocyanins enhance yeast's  
357 adsorption of ochratoxin A during the alcoholic fermentation. *Eur. Food Res. Technol.*  
358 245:309–314. doi: 10.1007/s00217-018-3162-9

359 Dachery, B., V. Manfroi, K. J. Berleze, and J. E. Welke. 2015. Occurrence of ochratoxin A in  
360 grapes, juices and wines and risk assessment related to this mycotoxin exposure. *Ciência*  
361 *Rural* 46:176–183. doi: 10.1590/0103-8478cr20141711

362 De Jesus, C. L., A. Bartley, A. Z. Welch, and J. P. Berry. 2018. High incidence and levels of  
363 ochratoxin A in wines sourced from the United States. *Toxins* 10 (1):1. doi:  
364 10.3390/toxins10010001

365 Eldarov, M. A., S. A. Kishkovskaia, T. N. Tanaschuk, and A. V. Mardanov. 2016. Genomics  
366 and biochemistry of *Saccharomyces cerevisiae* wine yeast strains. *Biochem.* 81 (13):1650–  
367 1668. doi: 10.1134/S0006297916130046

368 Esteve-Zarzoso, B., C. Belloch, F. Uruburu, and A. Querol. 1999. Identification of yeasts by  
369 RFLP analysis of the 5.8S rRNA gene and the two ribosomal internal transcribed spacers.  
370 *Int. J. Syst. Bacteriol.* 49 (1):329–337.

371 Fernández-González, M., J. F. Úbeda, and A. I. Briones. 2015. Study of *Saccharomyces*  
372 *cerevisiae* wine strains for breeding through fermentation efficiency and tetrad analysis.  
373 *Curr. Microbiol.* 70 (3):441–449. doi: 10.1007/s00284-014-0741-2

374 Fiori, S., P. P. Urgeghe, W. Hammami, S. Razzu, S. Jaoua, and Q. Migheli. 2014. Biocontrol  
375 activity of four non and low-fermenting yeast strains against *Aspergillus carbonarius* and  
376 their ability to remove ochratoxin A from grape juice. *Int. J. Food Microbiol.* 189:45–50.  
377 doi: 10.1016/j.ijfoodmicro.2014.07.020

378 Fowell, R. R. 1952. Sodium acetate agar as a sporulation medium for yeasts. *Nature* 170:578.  
379 doi: 10.1038/170578a0

380 Gil-Serna, J., C. Vázquez, M. T. González-Jaén, and B. Patiño. 2018. Wine contamination with  
381 ochratoxins: a review. *Beverages* 4 (1):6. doi: 10.3390/beverages4010006

382 Glories, Y. 1984. La couleur des vins rouges. I<sup>e</sup> Partie: les équilibres des anthocyanes et des  
383 tanins. *Connaissance Vigne Vin* 18 (3):195–217. doi: 10.20870/oeno-one.1984.18.3.1751

384 Ibeas, J. I., H. Lee, B. Damsz, D.T. Prasad, J. M. Pardo, P. M. Hasegawa, R.A. Bressan, and  
385 M. L. Narasimhan. 2000. Fungal cell wall phosphomannans facilitate the toxic activity of a  
386 plant PR-5 protein. *Plant J.* 23 (3):375–383. doi: 10.1046/j.1365-313x.2000.00792.x

387 Ivanova, V., B. Vojnoski, and M. Stefova. 2012. Effect of winemaking treatment and wine  
388 aging on phenolic content in Vranec wines. *J. Food Sci. Technol.* 49 (2):161–172. doi:  
389 10.1007/s13197-011-0279-2

390 Jigami, Y., and T. Odani. 1999. Mannosylphosphate transfer to yeast mannan. *Biochim.*  
391 *Biophys. Acta* 1426 (2):335–345. doi: 10.1016/s0304-4165(98)00134-2

392 Lemaresquier, H., A. Gainvors, C. Lequart, B. Charlemagne, V. Frézier, and A. Belarbi. 1995.  
393 Sélection de levures oenologiques á activité clarifiante. *Rev. Fr. Oenol.* 154:23–29.

394 Meca, G., G. Blaiotta, and A. Ritieni. 2010. Reduction of ochratoxin A during the fermentation  
395 of Italian red wine Moscato. *Food Control* 21 (4):579–583. doi:  
396 10.1016/j.foodcont.2009.08.008

397 Mercado, L., S. Jubany, C. Gaggero, R. W. Masuelli, and M. Combina. 2010. Molecular  
398 relationships between *Saccharomyces cerevisiae* strains involved in winemaking from  
399 Mendoza, Argentina. *Curr. Microbiol.* 61 (6):506–514. doi: 10.1007/s00284-010-9645-y

400 Naumova, E. S., G. I. Naumov, I. Masneuf-Pomarède, M. Aigle, and D. Dubourdieu. 2005.  
401 Molecular genetic study of introgression between *Saccharomyces bayanus* and *S. cerevisiae*.  
402 *Yeast* 22 (14):1099–1115. doi: 10.1002/yea.1298

403 Nickerson, W. J. 1953. Reduction of inorganic substances by yeast. I. Extracellular reduction  
404 of sulphide by species of *Candida*. *J. Infect. Dis.* 93 (1):43–48. doi: 10.1093/infdis/93.1.43

405 Paulovich, A. G., and L. J. Hartwell. 1993. A checkpoint regulates the rate of progression  
406 through S phase in *S. cerevisiae* in response to DNA damage. *Cell* 82 (5):841–847. doi:  
407 10.1016/0092-8674(95)90481-6

408 Petruzzi, L., A. Bevilacqua, A. Baiano, L. Beneduce, M. R. Corbo, and M. Sinigaglia. 2014.  
409 Study of *Saccharomyces cerevisiae* W13 as a functional starter for the removal of ochratoxin  
410 A. *Food Control* 35 (1):373–377.

411 Petruzzi, L., A. Bevilacqua, M. R. Corbo, B. Speranza, V. Capozzi, and M. Sinigaglia. 2017. A  
412 focus on quality and safety traits of *Saccharomyces cerevisiae* isolated from Uva di Troia  
413 grape variety. *J. Food Sci.* 82 (1):124–133. doi: 10.1111/1750-3841.13549

414 Piotrowska, M., A. Nowak, and A. Czyzowska. 2013. Removal of ochratoxin A by wine  
415 *Saccharomyces cerevisiae* strains. *Eur. Food Res. Technol.* 236:441–447. doi:  
416 10.1007/s00217-012-1908-3

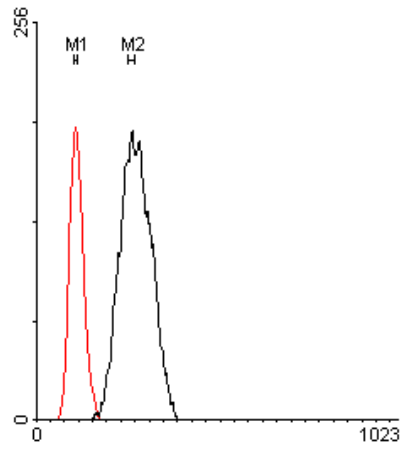
417 Pulvirenti, A., L. De Vero, G. Blaiotta, R. Sidari, G. Iosca, M. Gullo, and A. Caridi. 2020.  
418 Selection of wine *Saccharomyces cerevisiae* strains and their screening for the adsorption  
419 activity of pigments, phenolics and ochratoxin A. *Ferment.* 6 (3):80. doi:  
420 10.3390/fermentation6030080

421 Quintela, S., M. C. Villarán, I. López de Armentia, and E. Elejalde. 2013. Ochratoxin A removal  
422 in wine: a review. *Food Control* 30 (2):439-445. doi: 10.1016/j.foodcont.2012.08.014

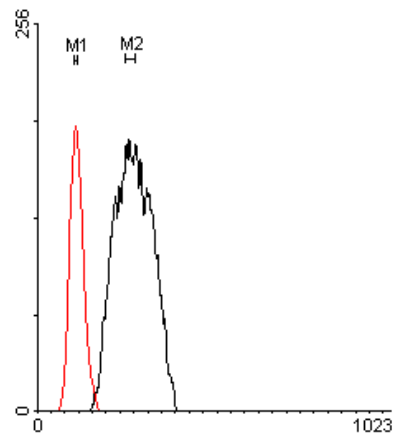
423 Sidari, R., A. Caridi, and K. S. Howell. 2014. Wild *Saccharomyces cerevisiae* strains display  
424 biofilm-like morphology in contact with polyphenols from grapes and wine. *Int. J. Food*  
425 *Microbiol.* 189:146–152. doi: 10.1016/j.ijfoodmicro.2014.08.012

426 Singleton, S. L., and J. A. Rossi. 1965. Colorimetry of total phenolics with phosphomolybdic-  
427 phosphotungstic acid reagents. *Am. J. Enol. Vitic.* 16:144–158.

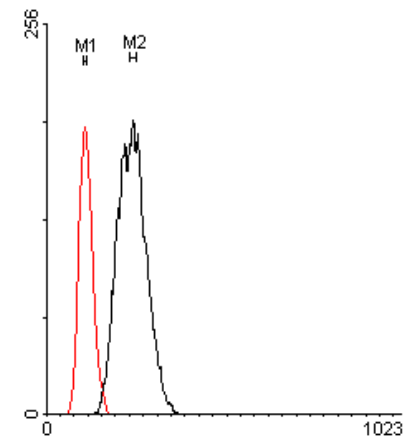
428  
429



(a)



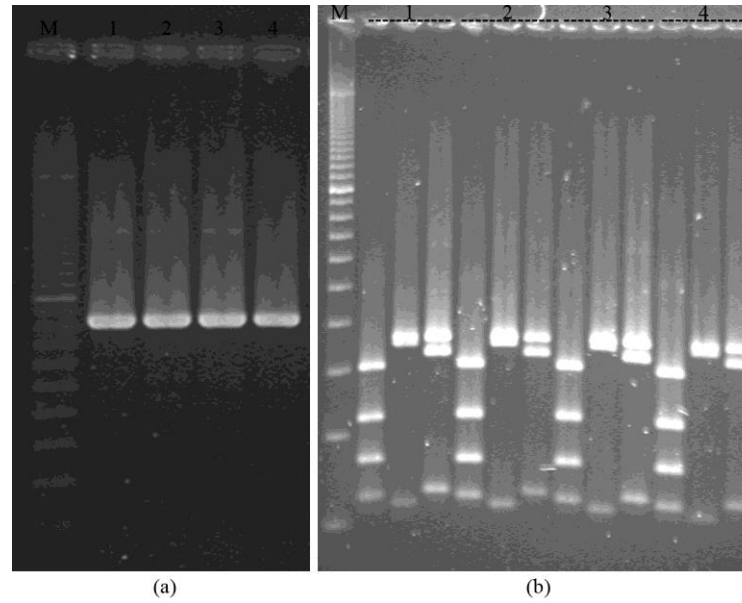
(b)



(c)

430  
431  
432  
433  
434  
435

**Fig. 1** Flow cytometry analysis of the three selected strains using the haploid control strain BY 474i (in red): a) strain Sc1674, b) strain Sc1741, c) strain Sc1905



**Fig. 2** Electrophoretic pattern of rITS-PCR products (a) and restriction profiles of the 5.8S-ITS region using *Hae*III, *Hin*fI, and *Cfo*I restriction enzymes (b) of the three yeast strains selected compared with a type strain. M: 100 bp molecular marker. (a) 1: *Saccharomyces cerevisiae* CBS 1171<sup>T</sup>, 2: Sc1674, 3: Sc1741, 4: Sc1905; (b) the order of the restriction enzymes is *Hae*III, *Hin*fI, and *Cfo*I. 1: *Saccharomyces cerevisiae* CBS 1171<sup>T</sup>, 2: Sc1674, 3: Sc1741, 4: Sc1905

**Table 1** List of the 84 yeast strains. Data highlighted in grey have caused the exclusion of the strains as they indicate lower fermentation vigor or higher adsorption activity of pigments and phenolics. The eight strains in bold are those that have passed all the tests. The data are expressed as mean value  $\pm$  standard deviation

Strain	Biomass color on grape-skin agar			Fermentation vigor after 3 days	Color intensity	FC index
	Red component	Green component	Blue component			
B35-Sc8	97 $\pm$ 2	53 $\pm$ 1	53 $\pm$ 2	6.97 $\pm$ 0.68	5.502 $\pm$ 0.558	14.50 $\pm$ 7.48
B35-Sc90	113 $\pm$ 2	69 $\pm$ 2	63 $\pm$ 3	7.03 $\pm$ 0.55	5.783 $\pm$ 0.645	16.78 $\pm$ 0.75
B35-Sc128	87 $\pm$ 4	49 $\pm$ 1	48 $\pm$ 2	7.13 $\pm$ 0.23	5.958 $\pm$ 0.528	24.83 $\pm$ 7.40
B35-Sc147	88 $\pm$ 5	47 $\pm$ 2	46 $\pm$ 1	8.98 $\pm$ 0.33	4.295 $\pm$ 0.100	17.30 $\pm$ 6.86
MCR5	93 $\pm$ 3	50 $\pm$ 2	48 $\pm$ 2	8.12 $\pm$ 0.19	1.793 $\pm$ 0.277	8.83 $\pm$ 1.88
MCR6	109 $\pm$ 4	61 $\pm$ 3	58 $\pm$ 3	7.72 $\pm$ 0.32	4.052 $\pm$ 0.254	14.27 $\pm$ 0.25
Sc251	78 $\pm$ 2	41 $\pm$ 2	41 $\pm$ 2	9.20 $\pm$ 0.20	4.917 $\pm$ 0.092	12.20 $\pm$ 4.99
Sc321	122 $\pm$ 1	75 $\pm$ 2	68 $\pm$ 2	6.33 $\pm$ 0.84	4.825 $\pm$ 0.596	13.65 $\pm$ 1.98
Sc329	99 $\pm$ 2	53 $\pm$ 2	50 $\pm$ 2	8.15 $\pm$ 0.30	3.112 $\pm$ 1.177	10.75 $\pm$ 5.30
Sc384	100 $\pm$ 4	61 $\pm$ 6	60 $\pm$ 5	8.60 $\pm$ 0.18	3.090 $\pm$ 0.241	14.43 $\pm$ 0.42
Sc396	112 $\pm$ 4	61 $\pm$ 4	56 $\pm$ 5	9.30 $\pm$ 0.15	3.987 $\pm$ 0.062	15.65 $\pm$ 1.39
Sc428	106 $\pm$ 1	63 $\pm$ 1	55 $\pm$ 2	8.30 $\pm$ 0.31	4.802 $\pm$ 0.043	14.25 $\pm$ 0.67
Sc468	83 $\pm$ 1	42 $\pm$ 2	44 $\pm$ 1	8.75 $\pm$ 0.39	2.073 $\pm$ 0.933	9.32 $\pm$ 5.45
Sc632	125 $\pm$ 4	80 $\pm$ 4	72 $\pm$ 4	6.98 $\pm$ 0.36	5.150 $\pm$ 0.368	17.67 $\pm$ 2.65
Sc786	110 $\pm$ 2	65 $\pm$ 3	59 $\pm$ 3	7.75 $\pm$ 0.36	5.642 $\pm$ 0.224	20.70 $\pm$ 0.52
<b>Sc1055</b>	116 $\pm$ 5	72 $\pm$ 5	64 $\pm$ 4	8.17 $\pm$ 0.46	5.212 $\pm$ 0.469	16.97 $\pm$ 1.21
Sc1128	99 $\pm$ 4	53 $\pm$ 2	49 $\pm$ 2	8.52 $\pm$ 0.33	2.915 $\pm$ 0.725	12.92 $\pm$ 4.65
Sc1228	101 $\pm$ 3	57 $\pm$ 2	52 $\pm$ 3	8.98 $\pm$ 0.25	5.157 $\pm$ 0.609	12.42 $\pm$ 3.60
Sc1240	95 $\pm$ 1	53 $\pm$ 2	50 $\pm$ 2	8.65 $\pm$ 0.30	4.143 $\pm$ 0.101	16.38 $\pm$ 3.43
Sc1321	61 $\pm$ 1	28 $\pm$ 2	32 $\pm$ 3	8.68 $\pm$ 0.10	1.517 $\pm$ 0.540	7.88 $\pm$ 4.51
Sc1326	115 $\pm$ 5	72 $\pm$ 5	69 $\pm$ 4	7.78 $\pm$ 0.12	4.512 $\pm$ 0.241	17.90 $\pm$ 1.31
Sc1340	95 $\pm$ 4	51 $\pm$ 4	49 $\pm$ 6	8.32 $\pm$ 0.51	3.303 $\pm$ 0.749	12.50 $\pm$ 4.18
Sc1349	144 $\pm$ 3	109 $\pm$ 4	94 $\pm$ 4	8.60 $\pm$ 0.48	4.050 $\pm$ 0.150	13.70 $\pm$ 0.61
Sc1526	101 $\pm$ 5	59 $\pm$ 5	55 $\pm$ 5	8.85 $\pm$ 0.25	3.608 $\pm$ 0.455	14.20 $\pm$ 0.46

Sc1541	124±3	85±2	75±3	8.00±0.35	3.653±0.432	17.67±2.83
Sc1572	122±3	81±3	71±3	6.17±0.36	4.355±0.332	17.27±2.03
Sc1583	81±4	45±5	45±5	5.58±0.35	5.315±0.116	15.05±2.17
Sc1591	97±4	54±5	52±6	8.68±0.28	4.033±0.508	9.93±3.12
<b>Sc1674</b>	119±5	76±5	69±5	8.38±0.13	4.103±0.494	18.67±1.51
Sc1687	109±6	65±6	60±8	9.12±0.12	1.168±0.086	11.33±0.76
Sc1721	120±2	70±2	68±2	9.40±0.15	1.452±0.210	11.02±1.01
<b>Sc1741</b>	118±5	70±4	63±5	8.68±0.10	4.650±0.097	18.38±0.08
Sc1751	138±5	89±6	83±4	6.88±0.50	5.080±0.414	19.08±1.33
Sc1771	121±1	76±1	70±1	8.68±0.10	3.882±0.241	14.87±0.38
Sc1798	142±3	96±4	84±5	8.78±0.13	2.880±0.094	14.73±0.33
Sc1819	135±1	87±1	78±2	6.82±0.06	1.252±0.039	13.60±0.30
Sc1864	77±3	37±2	36±2	9.48±0.13	1.240±0.266	8.73±2.63
Sc1871	124±5	81±5	69±5	8.52±0.19	3.097±0.737	17.38±2.08
<b>Sc1905</b>	120±4	71±4	61±4	8.88±0.06	4.567±0.155	17.48±1.72
Sc1936	99±5	53±3	51±2	8.80±0.48	4.730±0.217	12.73±2.63
Sc1951	118±3	74±2	67±2	8.62±0.12	2.265±0.605	14.97±0.68
Sc2306	154±6	124±9	112±11	6.25±0.30	5.965±0.169	15.90±3.34
Sc2319	89±4	50±3	48±3	7.98±0.23	2.743±1.011	16.10±8.37
Sc2361	67±3	32±2	36±2	7.95±0.20	4.942±0.826	21.08±6.08
Sc2363	128±2	85±2	76±2	9.05±0.23	3.775±0.465	14.05±0.82
Sc2366	130±3	88±4	77±2	8.20±0.26	3.515±1.252	17.02±10.29
Sc2485	87±3	44±2	44±3	8.72±0.40	4.562±0.133	13.28±2.95
Sc2616	101±3	60±3	55±2	8.83±0.38	2.422±1.043	11.80±0.83
Sc2621	81±1	42±1	42±1	9.17±0.15	1.293±0.091	8.68±1.62
Sc2705	75±3	38±1	40±2	8.55±0.26	4.492±0.149	11.62±2.38
Sc2708	99±5	58±4	54±3	8.37±0.28	5.052±0.417	18.43±8.65
Sc2710	115±4	72±3	66±4	7.68±0.35	5.120±0.136	13.80±1.13
Sc2712	107±4	64±5	60±5	8.05±0.13	4.328±0.286	12.95±0.53
Sc2713	126±1	82±1	76±1	8.43±0.33	4.538±0.079	14.12±0.03

Sc2715	118±4	78±3	70±2	8.37±0.29	4.683±0.353	14.27±0.19
Sc2723	89±3	48±1	46±3	6.88±0.86	3.227±1.056	10.40±4.89
Sc2724	92±3	52±2	51±2	8.08±0.60	2.698±1.215	15.83±6.50
<b>Sc2731</b>	117±1	72±1	66±1	8.17±0.37	5.535±0.039	15.63±0.91
Sc2734	121±3	79±1	68±2	7.08±0.13	3.968±0.209	14.48±0.79
Sc2744	73±3	36±2	38±2	8.67±0.20	2.483±0.508	10.52±6.31
Sc2750	120±5	76±4	69±3	7.33±0.53	4.728±0.453	15.32±1.00
Sc2751	108±5	66±3	62±3	8.50±0.56	5.412±0.339	13.72±0.61
Sc2753	80±3	42±1	42±1	7.48±0.06	3.385±0.444	10.93±6.11
Sc2754	101±1	59±2	59±2	6.63±1.25	2.372±0.387	11.32±0.70
Sc2760	114±2	69±2	64±2	8.73±0.33	3.437±0.718	14.40±0.73
Sc2762	107±2	61±1	56±2	7.75±0.22	2.065±0.088	13.78±0.71
Sc2770	90±1	48±1	50±1	7.95±0.70	2.173±0.435	11.18±1.95
Sc2773	101±3	58±2	56±1	6.92±0.15	5.718±0.253	15.87±1.07
<b>Sc2774</b>	130±1	86±1	77±3	8.50±0.17	6.355±0.744	15.67±0.83
Sc2776	104±2	62±1	57±2	6.68±0.34	5.767±0.378	13.30±0.61
Sc2786	92±2	48±2	47±2	8.75±0.58	1.480±0.740	12.23±8.22
Sc2803	128±2	84±2	76±3	9.07±0.24	4.235±0.511	13.37±3.70
Sc2814	117±2	76±1	66±3	6.52±1.17	5.180±0.437	13.05±2.18
<b>Sc2823</b>	141±2	105±3	91±2	8.13±0.35	4.967±0.274	15.57±0.95
TP1	109±1	65±2	60±2	6.35±0.84	2.858±0.150	11.15±1.33
TP4	124±2	83±1	73±1	7.40±0.48	3.693±0.640	11.02±0.99
<b>TP5</b>	129±4	88±4	77±3	8.12±0.42	5.167±0.074	14.90±1.78
TT51	112±4	64±2	61±1	8.50±0.30	4.422±0.211	15.28±1.00
TT104	126±3	83±1	75±1	8.60±0.13	1.635±0.126	11.85±0.78
TT141	75±3	34±1	36±2	9.57±1.94	5.468±0.207	12.08±2.62
TT193	60±2	28±2	34±1	7.47±0.20	5.253±0.363	16.77±6.58
TT201	56±3	27±2	32±4	8.67±0.65	4.915±0.271	10.13±2.08
TT241	101±2	61±2	58±3	8.62±0.31	5.087±0.284	17.00±0.26
TT254	120±1	75±3	68±2	7.88±0.15	5.052±0.015	16.00±0.20

<i>Min</i>	56	27	32	5.58	1.168	7.88
<i>Max</i>	154	124	112	9.57	6.355	24.83
<i>Mean</i>	106	64	59	8.09	3.968	14.27

---

**Table 2** List of the 27 yeast strains - three wine strains and their progeny (8 descendants for each parent) - studied for: red, green, and blue components of the biomass color on grape-skin agar medium; color intensity and FC index. Data highlighted in grey have caused the exclusion of the strains as they indicate higher adsorption activity of pigments and phenolics. The four strains in bold are those that have passed all the tests. The data are expressed as mean value  $\pm$  standard deviation

Strain	Biomass color on grape-skin agar			Color intensity	FC index
	Red component	Green component	Blue component		
Sc1674	116 $\pm$ 3	67 $\pm$ 2	64 $\pm$ 2	2.780 $\pm$ 0.047	16.18 $\pm$ 0.03
<b>Sc1674B_1A</b>	118 $\pm$ 6	70 $\pm$ 3	68 $\pm$ 5	2.867 $\pm$ 0.033	17.80 $\pm$ 0.20
Sc1674B_1B	100 $\pm$ 4	53 $\pm$ 3	52 $\pm$ 3	2.994 $\pm$ 0.068	16.08 $\pm$ 0.25
Sc1674B_1C	94 $\pm$ 5	47 $\pm$ 2	47 $\pm$ 3	2.835 $\pm$ 0.020	16.95 $\pm$ 0.13
Sc1674B_1D	99 $\pm$ 5	53 $\pm$ 5	54 $\pm$ 3	3.050 $\pm$ 0.022	14.70 $\pm$ 0.09
Sc1674C_1A	94 $\pm$ 3	49 $\pm$ 2	49 $\pm$ 2	2.754 $\pm$ 0.036	16.35 $\pm$ 0.30
Sc1674C_1B	106 $\pm$ 3	60 $\pm$ 4	58 $\pm$ 4	2.869 $\pm$ 0.036	15.85 $\pm$ 0.15
Sc1674C_1C	117 $\pm$ 2	68 $\pm$ 4	67 $\pm$ 3	3.103 $\pm$ 0.020	14.90 $\pm$ 0.13
Sc1674C_1D	99 $\pm$ 7	54 $\pm$ 6	54 $\pm$ 4	3.024 $\pm$ 0.054	15.12 $\pm$ 0.28
Sc1741	127 $\pm$ 5	83 $\pm$ 3	77 $\pm$ 4	2.375 $\pm$ 0.044	14.20 $\pm$ 0.17
Sc1741A_1A	112 $\pm$ 6	67 $\pm$ 7	67 $\pm$ 8	2.910 $\pm$ 0.132	16.23 $\pm$ 0.03
Sc1741A_1B	114 $\pm$ 4	65 $\pm$ 2	64 $\pm$ 2	2.460 $\pm$ 0.048	15.62 $\pm$ 0.26
<b>Sc1741A_1C</b>	117 $\pm$ 1	69 $\pm$ 2	67 $\pm$ 3	2.964 $\pm$ 0.061	17.08 $\pm$ 0.06
<b>Sc1741A_1D</b>	129 $\pm$ 3	81 $\pm$ 2	69 $\pm$ 2	2.765 $\pm$ 0.026	18.77 $\pm$ 0.06
Sc1741B_1A	128 $\pm$ 3	84 $\pm$ 2	70 $\pm$ 3	2.560 $\pm$ 0.028	16.45 $\pm$ 0.10
Sc1741B_1B	123 $\pm$ 3	77 $\pm$ 3	70 $\pm$ 2	2.570 $\pm$ 0.021	17.70 $\pm$ 0.20
<b>Sc1741B_1C</b>	137 $\pm$ 1	96 $\pm$ 2	82 $\pm$ 3	2.958 $\pm$ 0.035	16.90 $\pm$ 0.05
Sc1741B_1D	120 $\pm$ 4	74 $\pm$ 3	60 $\pm$ 2	2.750 $\pm$ 0.024	17.10 $\pm$ 0.09
Sc1905	115 $\pm$ 7	69 $\pm$ 4	63 $\pm$ 6	2.264 $\pm$ 0.019	14.17 $\pm$ 0.18
Sc1905B_1A	114 $\pm$ 6	66 $\pm$ 4	62 $\pm$ 4	2.498 $\pm$ 0.025	15.97 $\pm$ 0.06
Sc1905B_1B	129 $\pm$ 5	80 $\pm$ 4	68 $\pm$ 3	2.595 $\pm$ 0.025	15.02 $\pm$ 0.25
Sc1905B_1C	135 $\pm$ 4	85 $\pm$ 3	71 $\pm$ 3	2.552 $\pm$ 0.051	14.17 $\pm$ 0.03
Sc1905B_1D	124 $\pm$ 6	79 $\pm$ 5	63 $\pm$ 6	2.770 $\pm$ 0.065	16.12 $\pm$ 0.31

Sc1905C_1A	121±2	74±3	66±2	2.586±0.056	15.67±0.19
Sc1905C_1B	95±4	52±3	51±3	2.555±0.040	14.10±0.13
Sc1905C_1C	114±7	68±6	58±6	2.409±0.025	14.97±0.13
Sc1905C_1D	106±4	60±3	51±4	2.428±0.041	15.92±0.38
<i>Min</i>	94	47	47	2.264	14.10
<i>Max</i>	137	96	82	3.103	18.77
<i>Mean</i>	115	68	63	2.713	15.93

**Table 3** Analytical parameters of the wines produced at the six wineries using the selected strain of *Saccharomyces cerevisiae* Sc1741A\_1D (nd = not detectable)

Cultivar	Winery	Wine-making	Ethanol (vol.%)	Absorbance			Color intensity	OTA content (ppb)
				420 nm	520 nm	620 nm		
<i>Gaglioppo</i>	Azienda Vinicola Malaspina, Melito Porto Salvo (RC)	Sc1741A_1D	14.50	2.420	2.357	0.496	5.273	0.56
		control	13.00	1.227	0.922	0.225	2.374	0.79
<i>Greco Nero</i>	Verbicaro Viti e Vini S.r.l., Verbicaro (CS)	Sc1741A_1D	13.30	1.311	1.621	0.288	3.220	0.10
		control	12.80	2.270	3.565	0.641	6.476	0.20
<i>Magliocco</i>	Azienda Agrituristica Contessa, Lattarico (CS)	Sc1741A_1D	14.55	3.340	5.015	1.157	9.512	0.12
		control	13.85	2.745	4.270	0.963	7.978	0.30
	Azienda Vitivinicola Realarico Wines s.a.r.l., Carolei (CS)	Sc1741A_1D	14.70	3.346	4.995	1.156	9.497	nd
		control	14.90	4.923	5.767	2.026	12.716	nd
<i>Merlot</i>	Azienda Agricola Fratelli Zagarella, Arghillà (RC)	Sc1741A_1D	13.60	1.533	1.928	0.403	3.864	nd
		control	13.10	1.233	1.277	0.295	2.805	nd
<i>Nerello</i>	Azienda Agricola Cosimo Murace, Bivongi (RC)	Sc1741A_1D	14.30	3.740	5.767	1.496	11.003	nd